

READ AND UNDERSTAND THESE INSTRUCTIONS BEFORE INSTALLING FIXTURE

This fixture is intended for installation in accordance with the National Electrical Code and local regulations. To assure full compliance with local codes and regulations, check with your local electrical inspector before installation. To prevent electrical shock, turn off electricity at fuse box before proceeding.

Retain these instructions for maintenance reference.

INSTRUCTION SHEET NO.

IS:7920

R0394

Page 1 of 2

INSTALLATION OF THE SLOPED CEILING ADAPTER FOR

- (1) Recessed Duo-Cast Trim Calculites
- (2) Recessed Modular Frame-In Calculites
- (3) Recessed H.I.D. Downlights

1. Fixture must be supported from ceiling structure, using ADJUSTABLE MOUNTING BRACKETS. See Fig. 1, 2 and 4. Do not rely on PERFORATED TABS on SLOPED CEILING ADAPTER; they are intended for anchoring lath, not for supporting the fixture.
2. Adapter will add 1/4" to recessed height of the fixture.
3. Position the fixture to make certain that the MOUNTING BRACKETS or JUNCTION BOX will not interfere with finished ceiling or support structure (JUNCTION BOX away from the high side of the SLOPED CEILING is recommended).
4. Adjust MOUNTING BRACKET for desired angle See Fig. 1, 2, 3, 4 and 5.
5. SECURE SLOPED CEILING ADAPTER TO FIXTURE
 - A. For Calculites and H.I.D. Downlights with Duo-Cast Trim:
 - a. Detach DUO-CAST TRIM FRAME from the fixture (see instruction sheet packed with the fixture).

FIG. 1

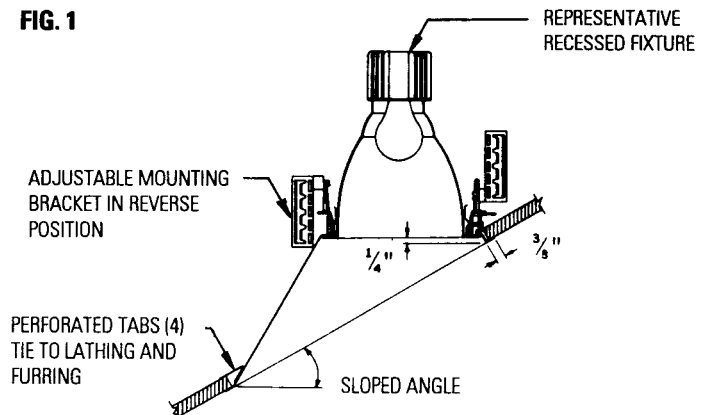


FIG. 2

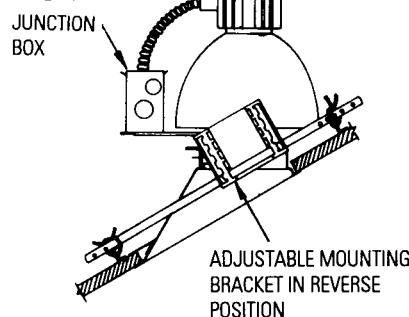


FIG. 3

MOUNTING STRAP CAN BE FORCED INTO DIFFERENT SLOTS TO GAIN MORE SLOPE ANGLE

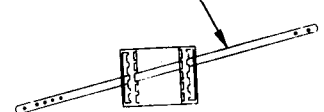


FIG. 4

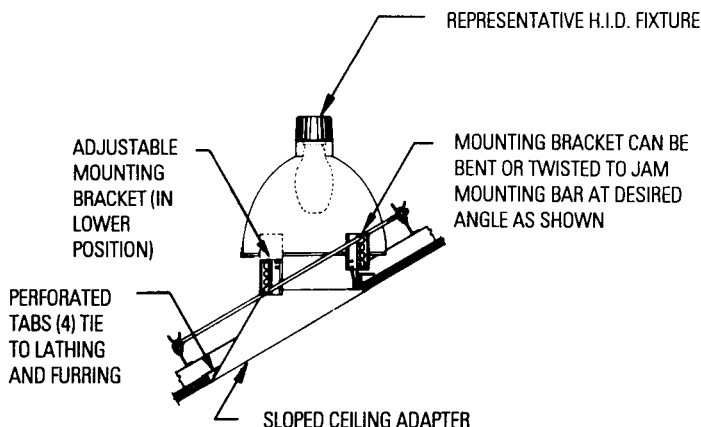
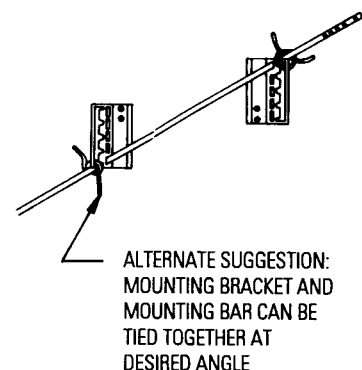


FIG. 5



LIGHTOLIER®

SECAUCUS, NEW JERSEY 07096
MONTREAL, QUEBEC, CANADA

INSTALLATION OF THE SLOPED CEILING ADAPTER (Continued)

- b. Attach DUO-CAST TRIM FRAME to SLOPED CEILING ADAPTER with flange down, by tightening (4) PHILLIPS HEAD POINTED SHEET METAL SCREWS. See Fig. 6 and instruction 3.

B. For Modular Frame-In Calculites:

- a. Secure MODULAR DIE-CAST RING to SLOPED CEILING ADAPTER by tightening (4) PHILLIPS HEAD POINTED SHEET METAL SCREWS. See Fig. 7 and instruction 3.

C. For Recessed H.I.D. Downlights without Duo-Cast Trim:

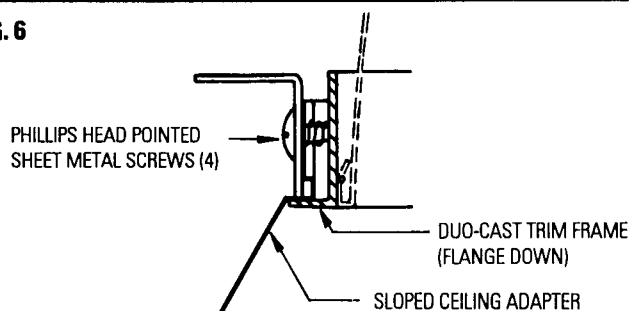
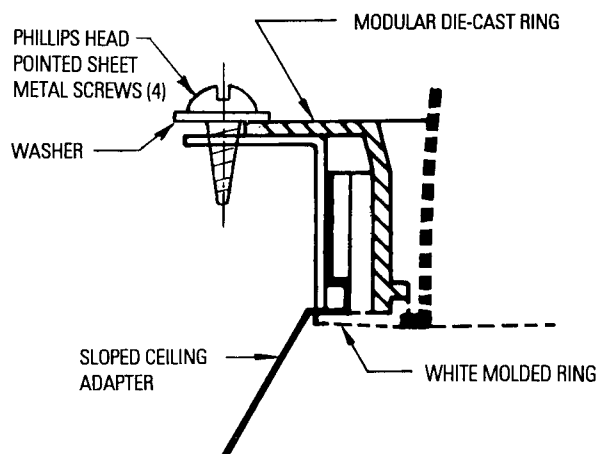
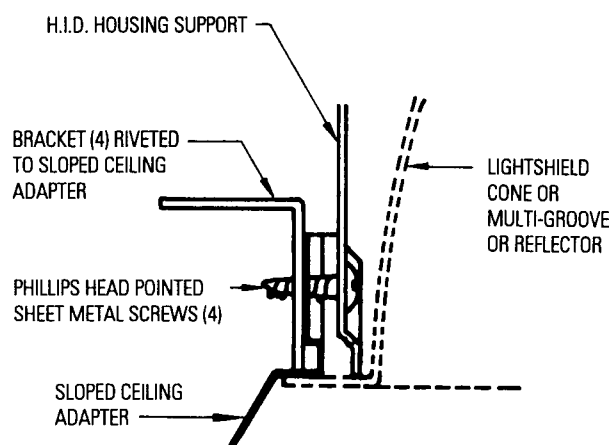
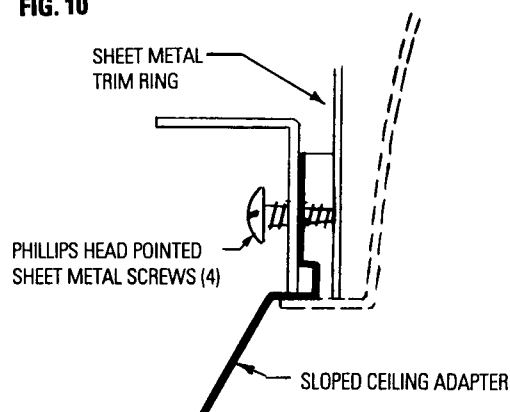
- a. Detach Lightshield (cone, Multi-Groove or reflector) from fixture. See instruction sheet packed with fixture.
- b. Secure SLOPED CEILING ADAPTER to the HOUSING SUPPORT by tightening, from inside of fixture, the (4) PHILLIPS HEAD POINTED SHEET METAL SCREWS as shown in Fig. 8.

NOTE: For EL8 fixture series bend (4) TABS 90° outward from NOTCHES to center HOUSING SUPPORT in SLOPED CEILING ADAPTER. Then secure with (4) WASHERS though NOTCHES shown in Fig. 9.

D. For Calculite and Recessed H.I.D. Downlights with flangless Sheet Metal Trim Ring:

- a. Detach SHEET METAL TRIM RING from fixture (see instruction sheet packed with fixture).
- b. Attach SHEET METAL TRIM RING to SLOPED CEILING ADAPTER by tightening (4) PHILLIPS HEAD POINTED SHEET METAL SCREWS. See Fig. 10 and instruction 3.

6. After complete installation, replace white molded ring (if any) and Lightshield (cone, Multi-Groove or reflector). See instruction sheet packed with fixture.

FIG. 6**FIG. 7****FIG. 8****FIG. 10****FIG. 9**