

READ AND UNDERSTAND THESE INSTRUCTIONS BEFORE INSTALLING FIXTURE

This fixture is intended for installation in accordance with the National Electrical Code and local regulations. To assure full compliance with local codes and regulations, check with your local electrical inspector before installation. To prevent electrical shock, turn off electricity at fuse box before proceeding.

Retain these instructions for maintenance reference.

INSTRUCTION SHEET NO.

IS:8629

R0992

Page 1 of 2

INSTRUCTIONS FOR INSTALLATION OF LYTEDROP FIXTURE FOR USE WITH 8600 SERIES POWER JACKS ONLY

SETTING THE HEIGHT

1. Determine the distance "A" between the SOCKET HOLDER and the POWER JACK ENTRY.

ELECTRICAL CONNECTIONS (FIG. 2 & 3)

1. Thread the ELECTRICAL CORD through the WIRING CHAMBER (Fig. 2).
2. Knot the ELECTRICAL CORD so a length of ("A" minus 1 1/4") remains from the knot to the socket holder (Fig. 2).
3. Cut the electrical cord 2" from knot (Fig. 2).
4. Trim the outer jacket back 1 1/2" from the end of the CORD. DO NOT CUT WIRE (Fig. 2).
5. Strip 3/8" of the insulation on the wires from the JACK ASSEMBLY and ELECTRICAL CORD. Join them with the WIRE NUTS provided (no polarity needed) (Fig. 2).
6. Position the WIRE NUTS as shown in Fig. 3 and insert them into the WIRING CHAMBER along with the base of the JACK ASSEMBLY.
7. Line up the 2 holes in the base of the JACK ASSEMBLY with the 2 holes in the WIRING CHAMBER and screw in the 2 SCREWS (Figs. 2).

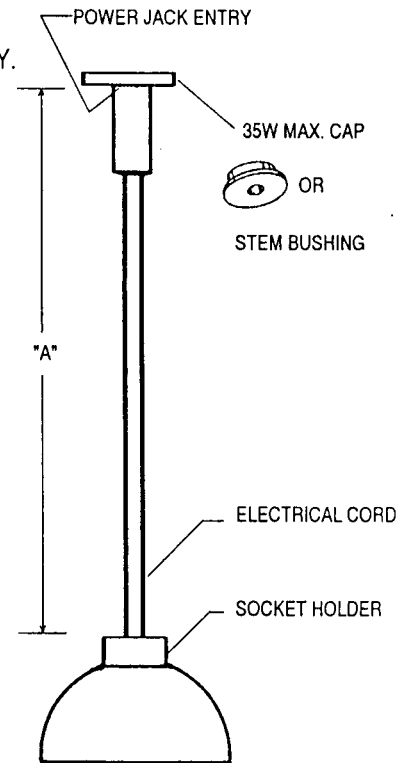


FIG. 1

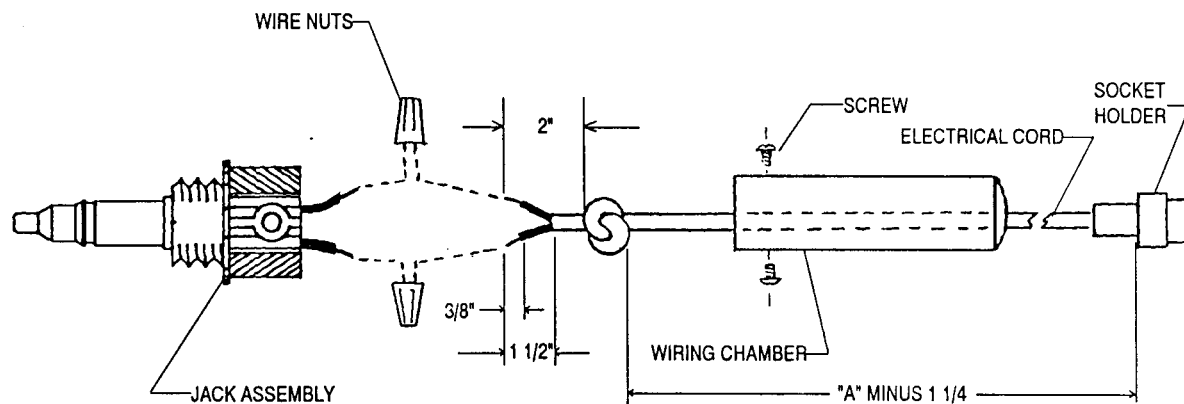


FIG. 2

JACK ASSEMBLY BEFORE CLOSING

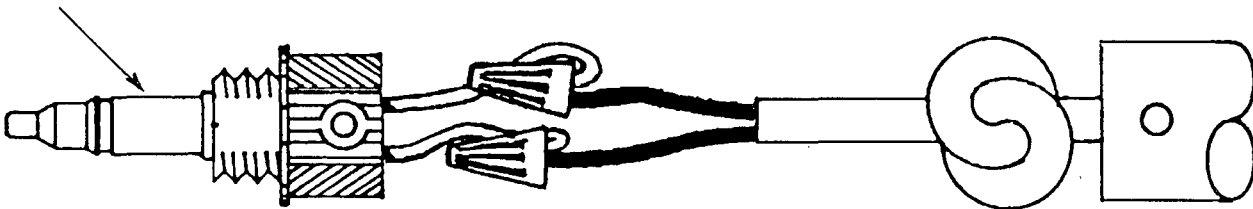


FIG. 3

MOUNTING AND ADJUSTMENTS (FIG. 1)

1. If used with POINT POWER JACK #8605, use the cap marked "35W MAX." (See Fig. 1.) If used with other POWER JACKS, make certain that the STEM BUSHING is removed from the POWER JACK.
2. Screw the JACK ASSEMBLY fully into the POWER JACK.

INSTRUCTIONS FOR LAMPING

CAUTION: MAKE CERTAIN THAT THE LYTEDROP FIXTURE IS COOL BEFORE HANDLING. SINCE THE LAMP HEATS QUICKLY, MAKE SURE THAT THE POWER IS DISCONNECTED BEFORE INSERTING LAMP INTO THE LAMP SOCKET.

1. SEPARATE

Lift the GLOBE ASSEMBLY (with STYLE JACK SHADE) while rotating to the LEFT until it is released from the SOCKET HOLDER (Fig. 4).

2. INSTALL LAMP

CAUTION: DO NOT TOUCH THE LAMP WITH BARE HANDS.

Oils from the hands could reduce LAMP life. Use tissue paper or soft cloth. Insert the LAMP into the SOCKET holes as far as it will go. Pins will be exposed approximately 1/16" outside of the SOCKET when fully engaged. No polarity of pins is required.

3. REASSEMBLE (Fig. 5).

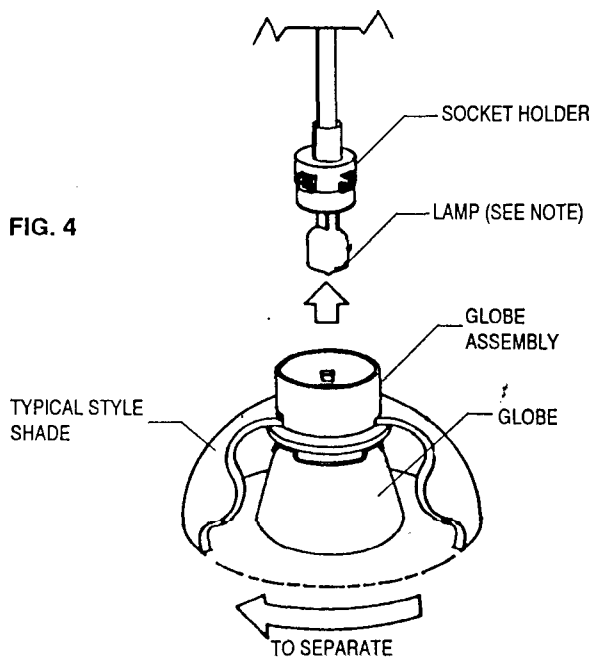


FIG. 4

FIG. 5

NOTE: Lamp replacement:
Tungsten-Halogen, T4 Bi-
Pin 6.35 base 35W max.

