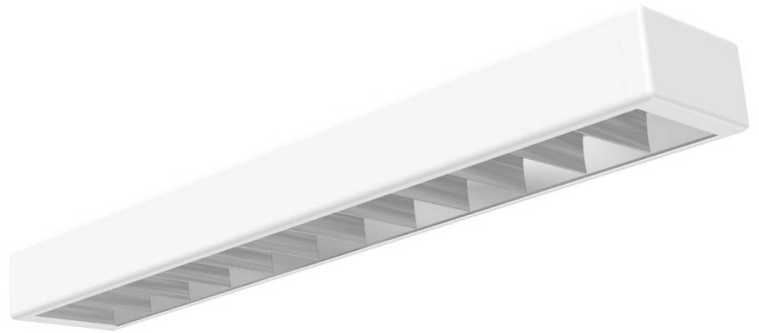


Lytecel Linear **LL4MF8LR232**

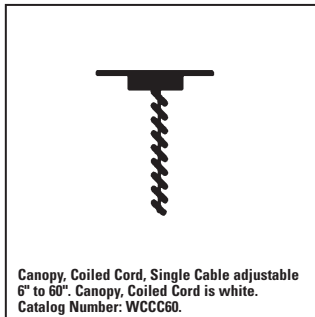
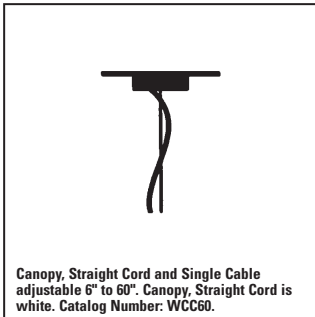
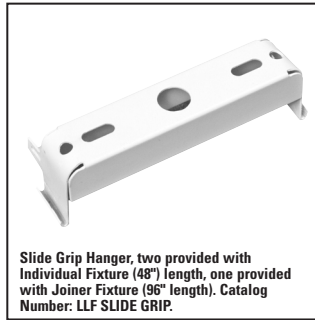
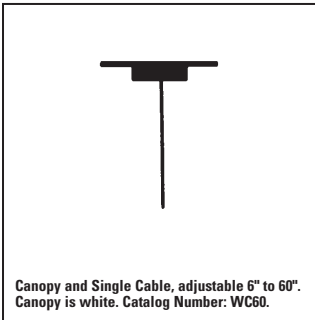
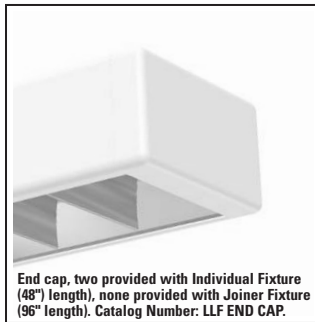
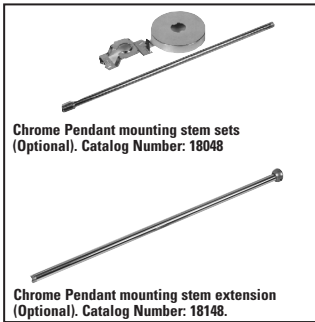
Downlight, Surface/Pendant, 4-5/8" Deep, 8-9/16" Wide
48" or 96" Nominal Lengths (Without End Caps), 2 Lamp T8

Features

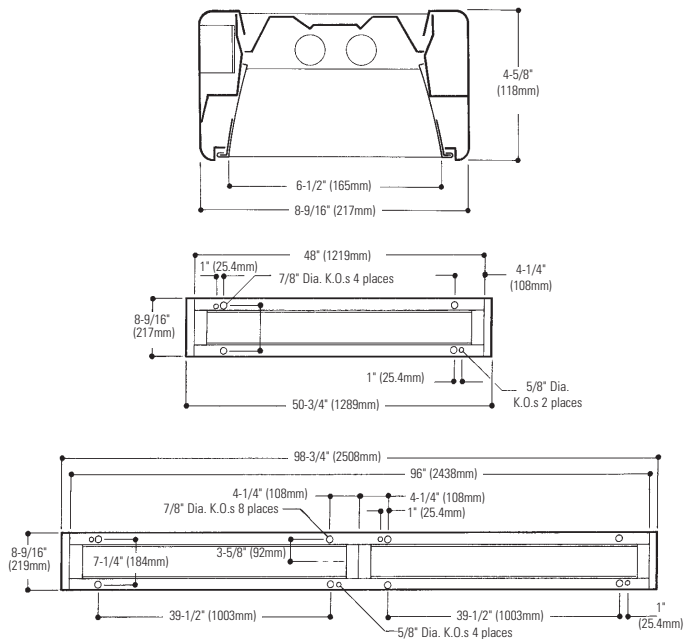
- Downlight surface or pendant.
- Softly rounded corners and edges create a subtle architectural appearance.
- 48" and 96" modular lengths without end caps.
- 48" long louver gives an uninterrupted louver appearance when row mounted.
- No visible fasteners.
- Self-aligning ends for hairline joints in continuous row mounting.
- Efficiency 65.4% (8 cell). Efficiency 57.7% (12 cell).
- Spacing ratio 1.5 (12 cell and 8 cell).
- 20 gauge body.
- Die-cast aluminum end caps.
- Pre-anodized low iridescence semi-specular aluminum parabolic louver with protective film dust bag (standard).
- 95% reflective specular aluminum top reflector.
- Spring-loaded latches.
- Bead safety chain allows louver to be suspended safely for relamping.
- Meets New York City requirements.



Mounting Methods/Features



Dimensions



Job Information

Type:

Job Name:

Cat. No.:

Lamp(s):

Volts/Ballast:

Lightolier a Genlyte company www.lightolier.com
 Technical Information: (978) 657-7600 • Fax (978) 658-0595
 631 Airport Road, Fall River, MA 02720 • (508) 679-8131 • Fax (508) 674-4710
 We reserve the right to change details of design, materials and finish.
 © 2005 a Genlyte company
 A0902



Lytecel Linear LL4MF8LR232

Page 2 of 2

Downlight, Surface/Pendant, 4-5/8" Deep, 8-9/16" Wide, 48" or 96" Nominal Lengths (Without End Caps), 2 Lamp

Model No. LL4MF8LR232120SO (8 Cell)

LER = FP - 55.6 IW - 58 BF - 0.87
Comparative yearly lighting energy cost per 1000 lumens = \$4.32

Report Number: G2005007
Catalog Number: LL4MF8LR232120SO
Lamp: FP32/T8 TL841
Luminaire: LL4 with reflector, 8 cell louver
Ballast: Triad B232IUNV-HP
58 Watts
Report is based on 2850 Lumens per lamp.
Efficiency: 65.4%
CIE Type-Direct-Indirect
Plane: 0-Deg 90-Deg
Spacing Criteria: 1.2 1.5
Shielding Angles: 65 55
Plane: 0-Deg 90-Deg
Luminous Length: 48.000 6.480

CANDELA DISTRIBUTION

	0.0	45.0	90.0	FLUX
0	1309	1309	1309	
5	1325	1367	1387	132
15	1313	1485	1521	412
25	1257	1540	1695	704
35	1146	1590	1739	945
45	878	1287	1282	907
55	461	608	491	502
65	68	89	72	101
75	19	14	13	17
85	5	4	3	4
90	0	0	0	

COEFFICIENTS OF UTILIZATION - ZONAL CAVITY METHOD. EFFECTIVE FLOOR CAVITY REFLECTANCE 0.20

RC	80	50	30	10	50	30	10		
RW 70	50	30	50	30	10	50	30	10	
1	73	70	68	66	65	63	64	63	61
2	68	63	60	60	57	55	58	56	54
3	63	57	52	54	51	48	52	49	47
4	58	51	46	49	45	42	47	44	41
5	53	46	41	44	40	37	43	39	36
6	50	42	37	40	36	32	39	35	32
7	46	38	33	36	32	29	36	32	29
8	43	35	30	33	29	26	33	29	26
9	40	32	27	31	26	23	30	26	23
10	37	29	24	28	24	21	28	24	21

LUMINANCE DATA IN CANDELA/SQ. METER

AVERAGE IN DEG.	AVERAGE 0-DEG.	AVERAGE 45-DEG.	AVERAGE 90-DEG.
45	6185.	9067.	9032.
55	4004.	5280.	4264.
65	802.	1049.	849.
75	366.	269.	250.
85	286.	229.	171.

ZONAL LUMEN SUMMARY

ZONE	LUMENS	% LAMP	% FIXT
0- 30	1248	21.9	33.5
0- 40	2193	38.5	58.9
0- 60	3603	63.2	96.7
0- 90	3725	65.4	100.0
90-180	0	0.0	0.0
0-180	3725	65.4	100.0

Model No. LL4MF12LR232120SO (12 Cell)

LER = FP - 49.6 IW - 58 BF - 0.87
Comparative yearly lighting energy cost per 1000 lumens = \$4.80

Report Number: G2005011
Catalog Number: LL4MF12LR232120SO
Lamp: F32/T8 TL841
Luminaire: LL4 with reflector, 12 cell louver
Ballast: Triad B232IUNV-HP
58 Watts
Report is based on 2850 Lumens per lamp.
Efficiency: 57.7%
CIE Type-Direct-Indirect
Plane: 0-Deg 90-Deg
Spacing Criteria: 1.2 1.5
Shielding Angles: 65 55
Plane: 0-Deg 90-Deg
Lumen Length: 48.000 6.480

CANDELA DISTRIBUTION

	0.0	45.0	90.0	FLUX
0	1287	1287	1287	
5	1278	1327	1371	128
15	1217	1428	1504	398
25	1108	1471	1800	687
35	917	1503	1829	898
45	652	1162	1220	800
55	164	417	291	310
65	47	45	35	51
75	17	13	8	14
85	5	3	2	4
90	0	0	0	

COEFFICIENTS OF UTILIZATION - ZONAL CAVITY METHOD. EFFECTIVE FLOOR CAVITY REFLECTANCE 0.20

RC	80	50	30	10	50	30	10		
RW 70	50	30	50	30	10	50	30	10	
1	65	63	61	59	58	56	57	56	55
2	60	57	54	54	51	49	52	50	48
3	56	51	47	49	46	43	47	45	43
4	52	46	42	44	41	38	43	40	38
5	48	42	37	40	37	32	39	36	33
6	46	38	34	37	33	30	36	32	30
7	42	35	30	33	30	27	33	29	27
8	39	32	27	31	27	24	30	27	24
9	36	29	25	28	25	22	28	24	22
10	34	27	23	26	22	20	26	22	20

LUMINANCE DATA IN CANDELA/SQ. METER

AVERAGE IN DEG.	AVERAGE 0-DEG.	AVERAGE 45-DEG.	AVERAGE 90-DEG.
45	4593.	8186.	8595.
55	1424.	3622.	2527.
65	554.	530.	413.
75	327.	250.	154.
85	286.	171.	114.

ZONAL LUMEN SUMMARY

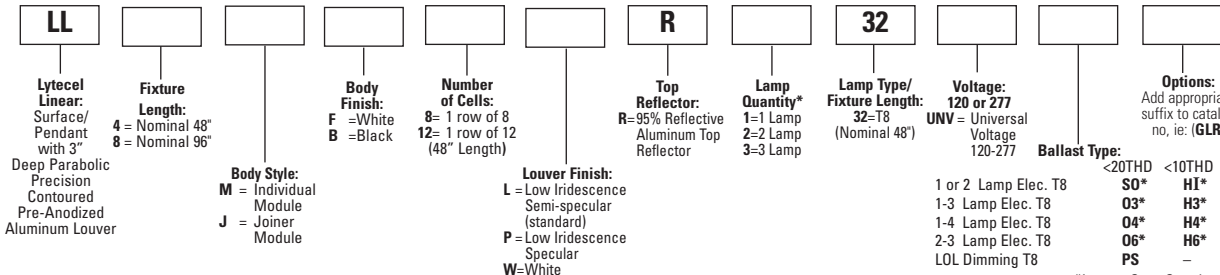
ZONE	LUMENS	% LAMP	% FIXT
0- 30	1213	21.3	36.9
0- 40	2111	37.0	64.1
0- 60	3221	56.5	97.9
0- 90	3291	57.7	100.0
90-180	0	0.0	0.0
0-180	3291	57.7	100.0

Ordering Information

Explanation of Catalog Number. Example: LL4MF8LR232120S0GLR

*For any additional ballast or wiring combination consult factory.

*8' units have lamps in tandem.



Options/accessories

Stem Sets: 1/2" diameter tubing, 18" long, chrome plated finish. Catalog Number: **18048**.

Stem Extension Kit: 1/2" diameter tubing, 18" long, chrome plated finish extension. Catalog Number: **18148**.

Single Cable and Canopy. Catalog Number: **WC60**.

Single Cable, Straight Cord and Canopy. Catalog Number: **WCC60**.

Single Cable, Coiled Cord and Canopy. Catalog Number: **WCCC60**.

Electrical Wiring Options: Consult factory.

Fusing: Internal fast-blow fusing. Suffix: **GLR**.

Internal slow-blow fusing. Suffix: **GMF**.

Specifications

Performance: In an installation of 2 lamp 32W luminaires with a room cavity ratio of 1, with reflectance 80% ceiling, 50% wall, 20% floor, the C.U. shall be not less than .70. Candelas at 65° shall not exceed 100 (8 cell). To control veiling reflections, luminaire output in the 30°- 90° zone shall be not less than 65.5%.

Materials: Chassis parts are die-formed 20 gauge code cold rolled steel, End caps are die-cast aluminum with soft rounded corners.

Specifications (continued)

Louver: Pre-anodized aluminum (Coilzak® or equal).

Finish: Louver—low iridescence semi-specular anodized aluminum (standard).

Chassis exterior—semi-gloss (standard) flat acrylic-white baked enamel,

Cavity—white baked enamel. Phosphate undercoating.

Electrical: Thermally protected class "P" ballast, non PCB. If K.O. is within 3" of ballast, use wire suitable for at least 90°.

Labels: I.B.E.W./UL and ULc Listed.

Job Information

Type:

Lightolier a Genlyte company

www.lightolier.com

Technical Information: (978) 657-7600 • Fax (978) 658-0595

631 Airport Road, Fall River, MA 02720 • (508) 679-8131 • Fax (508) 674-4710

We reserve the right to change details of design, materials and finish.

© 2005 a Genlyte company

A0902

Section 5/Folio K35-14

LIGHTOLIER®