

Lytecel Linear **LL4MF8LX154**

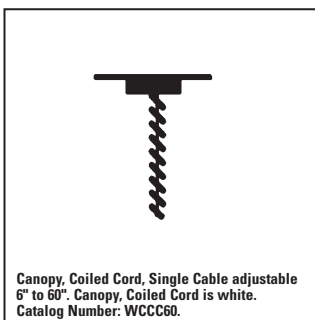
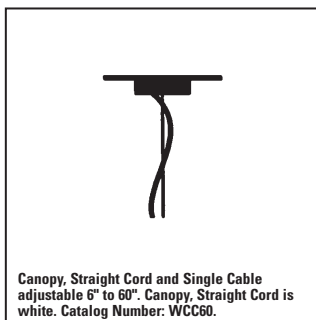
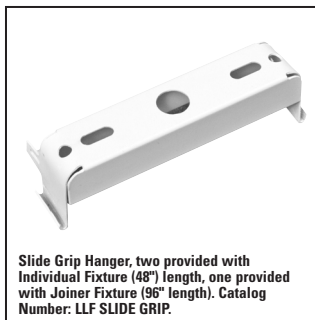
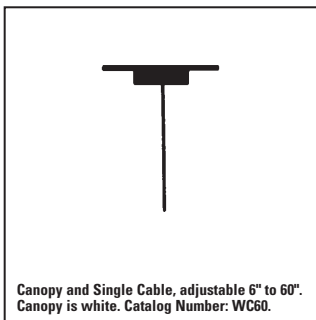
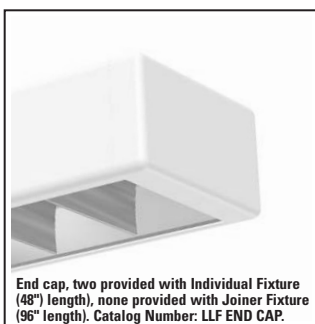
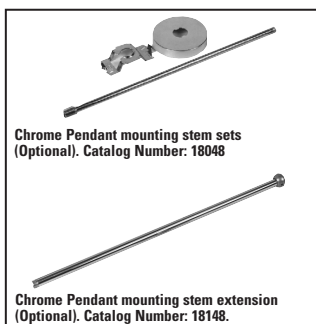
Uplight/Downlight, Pendant, 4-5/8" Deep, 8-9/16" Wide
48" or 96" Nominal Lengths (Without End Caps), 1 Lamp T5

Features

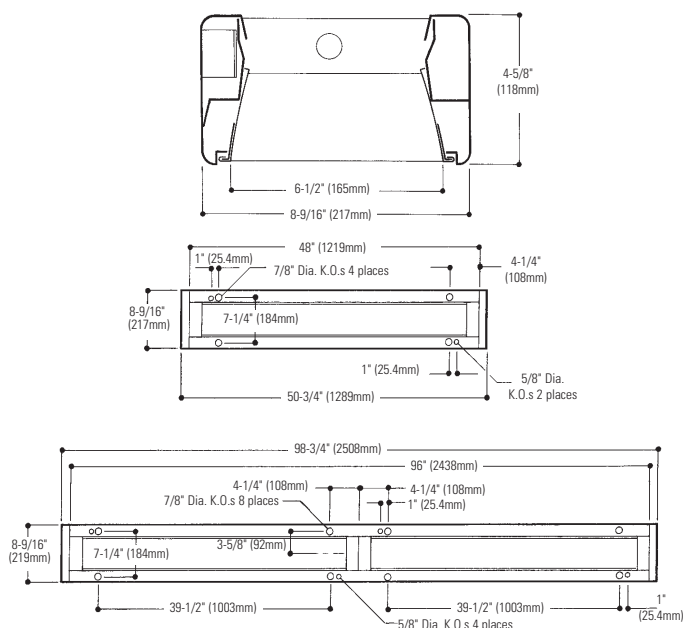
- Downlight surface/pendant.
- Softly rounded corners and edges create a subtle architectural appearance.
- 48" and 96" modular lengths without end caps.
- 48" long louver gives an uninterrupted louver appearance when row mounted.
- No visible fasteners.
- Self-aligning ends for hairline joints in continuous row mounting.
- Efficiency 85.9%, (8 cell).
- Efficiency 81.7%, (12 cell).
- Spacing ratio 1.9 (8 cell), 2.0 (12 cell).
- 20 gauge body.
- Die-cast aluminum end caps.
- Pre-anodized low iridescence semi-specular aluminum parabolic louver with protective film dust bag (standard).
- Spring-loaded latches.
- Bead safety chain allows louver to be suspended safely for relamping.
- Meets New York City Code requirements.



Mounting Methods/Features



Dimensions



Job Information

Type:

Job Name:

Cat. No.:

Lamp(s):

Volts/Ballast:

Lightolier a Genlyte company www.lightolier.com
 Technical Information: (978) 657-7600 • Fax (978) 658-0595
 631 Airport Road, Fall River, MA 02720 • (508) 679-8131 • Fax (508) 674-4710
 We reserve the right to change details of design, materials and finish.
 © 2005 a Genlyte company
 A0902

Section 5/Folio K35-11



Lytecel Linear LL4MF8LX154

Page 2 of 2

Uplight/Downlight, Pendant, 4-5/8" Deep, 8-9/16" Wide, 48" or 96" Nominal Lengths (Without End Caps), 1 Lamp T5

Model No. LL4MF8LX15420PG (8 Cell)

LER = FP - 67.1 IW - 64 BF - 1.00
 Comparative yearly lighting energy cost per 1000 lumens = \$3.58
 Report Number: G2004182
 Catalog Number: LL4MF8LX15420PG
 Lamp: FP54/835 HO
 Luminaire: LL4 without reflector, 8 cell louver
 Ballast: Universal B254PUNV-D
 64.0 Watts
 Report is based on 5000 Lumens per lamp.
 Efficiency: 85.9%
 CIE Type-Direct-Indirect
 Plane: 0-Deg 90-Deg
 Spacing Criteria: 1.2 2.0
 Shielding Angles: 65 55
 Plane: 0-Deg 90-Deg
 Luminous Length: 48.000 6.480

CANDELA DISTRIBUTION

	0.0	45.0	90.0	FLUX
0	559	559	559	
15	553	559	564	53
15	522	555	589	158
25	469	572	773	279
35	405	710	1081	453
45	310	760	782	503
55	174	343	231	244
65	29	62	45	61
75	11	12	10	13
85	4	5	4	6
90	2	3	3	

COEFFICIENTS OF UTILIZATION - ZONAL CAVITY METHOD. EFFECTIVE FLOOR CAVITY REFLECTANCE 0.20

RC	80	50	30	10	50	30	10		
RW 70	50	30	10	50	30	10	10		
1	83	80	77	60	58	57	48	47	46
2	76	70	65	53	51	48	43	41	40
3	70	62	56	47	44	41	39	36	34
4	64	55	49	42	38	35	35	32	29
5	59	49	42	38	34	30	31	28	25
6	54	44	37	34	30	26	28	25	22
7	50	40	33	31	26	23	25	22	20
8	46	36	29	28	23	20	23	20	17
9	43	32	26	25	21	18	21	18	15
10	40	30	24	23	19	16	19	16	14

LUMINANCE DATA IN CANDELA/SQ. METER

AVERAGE IN DEG.	AVERAGE 0-DEG.	AVERAGE 45-DEG.	AVERAGE 90-DEG.
45	1985	3770	3165
55	1322	1861	975
65	281	364	205
75	154	90	51
85	107	49	24

ZONAL LUMEN SUMMARY

ZONE	LUMENS	% LAMP	% FIXT
0- 30	491	9.8	11.4
0- 40	944	18.9	22.0
0- 60	1691	33.8	39.4
0- 90	1771	35.4	41.2
90-120	825	16.5	19.2
90-130	1277	25.5	29.7
90-150	2042	40.8	47.5
90-180	2524	50.5	58.8
0-180	4295	85.9	100.0

Model No. LL4MF12LX15420PG (12 Cell)

LER = FP - 63.8 IW - 64 BF - 1.00
 Comparative yearly lighting energy cost per 1000 lumens = \$3.76
 Report Number: G2004183
 Catalog Number: LL4MF12LX15420PG
 Lamp: FP54/835 HO
 Luminaire: LL4 without reflector, 12 cell louver
 Ballast: Universal B254PUNV-D
 64.0 Watts
 Report is based on 5000 Lumens per lamp.
 Efficiency: 81.7%
 CIE Type-Direct-Indirect
 Plane: 0-Deg 90-Deg
 Spacing Criteria: 1.1 2.0
 Shielding Angles: 65 55
 Plane: 0-Deg 90-Deg
 Luminous Length: 48.000 6.480

CANDELA DISTRIBUTION

	0.0	45.0	90.0	FLUX
0	533	533	533	
5	529	631	536	51
15	491	523	554	149
25	433	536	736	263
35	365	685	1208	457
45	266	720601	442	
55	72	186	189	153
65	21	28	27	33
75	9	10	7	10
85	3	5	3	5
90	2	3	3	

COEFFICIENTS OF UTILIZATION - ZONAL CAVITY METHOD. EFFECTIVE FLOOR CAVITY REFLECTANCE 0.20

RC	80	50	30	10	50	30	10		
RW 70	50	30	10	50	30	10	10		
1	79	75	73	56	55	53	45	44	43
2	72	67	62	50	47	45	40	38	37
3	66	59	54	45	41	39	36	34	32
4	61	52	47	40	36	33	32	30	27
5	56	47	41	36	32	29	29	26	24
6	51	42	36	32	28	25	26	23	21
7	47	38	32	29	25	22	24	21	19
8	44	34	28	26	22	19	22	19	16
9	41	31	25	24	20	17	20	17	15
10	38	28	22	22	18	15	18	15	13

LUMINANCE DATA IN CANDELA/SQ. METER

AVERAGE IN DEG.	AVERAGE 0-DEG.	AVERAGE 45-DEG.	AVERAGE 90-DEG.
45	1704	3571	2432
55	547	1009	798
65	304	174	123
75	126	75	36
85	80	49	18

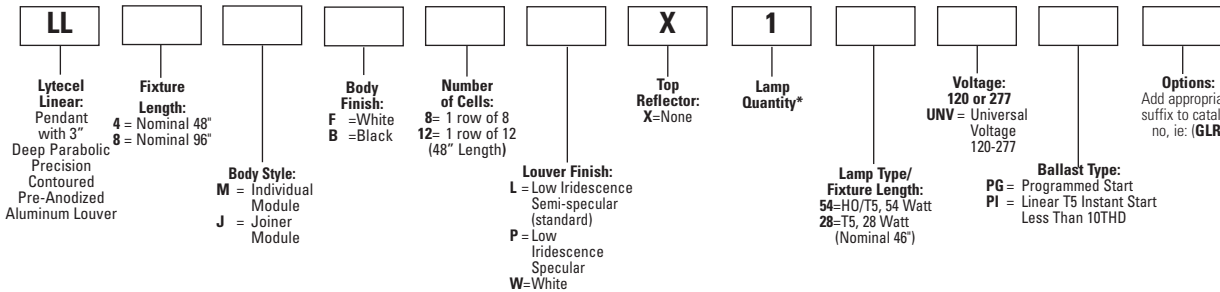
ZONAL LUMEN SUMMARY

ZONE	LUMENS	% LAMP	% FIXT
0- 30	463	9.3	11.3
0- 40	919	18.4	22.5
0- 60	1514	30.3	37.1
0- 90	1563	31.3	38.2
90-120	825	16.5	20.2
90-130	1277	25.5	31.2
90-150	2042	40.8	50.0
90-180	2524	50.5	61.8
0-180	4087	81.7	100.0

Ordering Information

Explanation of Catalog Number. Example: LL4MF8LX15420PGGLR

*8" units have lamps in tandem



Options/accessories

Stem Sets: 1/2" diameter tubing, 18" long, chrome plated finish. Catalog Number: **18048**.

Stem Extension Kit: 1/2" diameter tubing, 18" long, chrome plated finish extension. Catalog Number: **18148**.

Single Cable and Canopy. Catalog Number: **WC60**.

Single Cable, Straight Cord and Canopy. Catalog Number: **WCC60**.

Single Cable, Coiled Cord and Canopy. Catalog Number: **WCC60**.

Electrical Wiring Options: Consult factory.

Fusing: Internal fast-blow fusing. Suffix: **GLR**.

Internal slow-blow fusing. Suffix: **GMF**.

Specifications

Performance: In an installation of 1 lamp 54W luminaires with a room cavity ratio of 1, with reflectance 80% ceiling, 50% wall, 20% floor, the C.U. shall be not less than .80. Candelas at 65° shall not exceed 62 (8 cell). To control veiling reflections, luminaire output in the 30°- 90° zone shall be not less than 88.6%.

Materials: Chassis parts are die-formed 20 gauge code cold rolled steel, End caps are die-cast aluminum with soft rounded corners.

Specifications (continued)

Louver: Pre-anodized aluminum (Coilzak® or equal).

Finish: Louver—low iridescence semi-specular anodized aluminum (standard).

Chassis exterior—semi-gloss (standard) flat acrylic-white baked enamel,

Cavity—white baked enamel. Phosphate undercoating.

Electrical: Thermally protected class "P" ballast, non PCB. If K.O. is within 3" of ballast, use wire suitable for at least 90°.

Labels: I.B.E.W./UL and ULc Listed.

Job Information

Type:

Lightolier a Genlyte company

www.lightolier.com

Technical Information: (978) 657-7600 • Fax (978) 658-0595

631 Airport Road, Fall River, MA 02720 • (508) 679-8131 • Fax (508) 674-4710

We reserve the right to change details of design, materials and finish.

© 2005 a Genlyte company

A0902

Section 5/Folio K35-11

LIGHTOLIER®