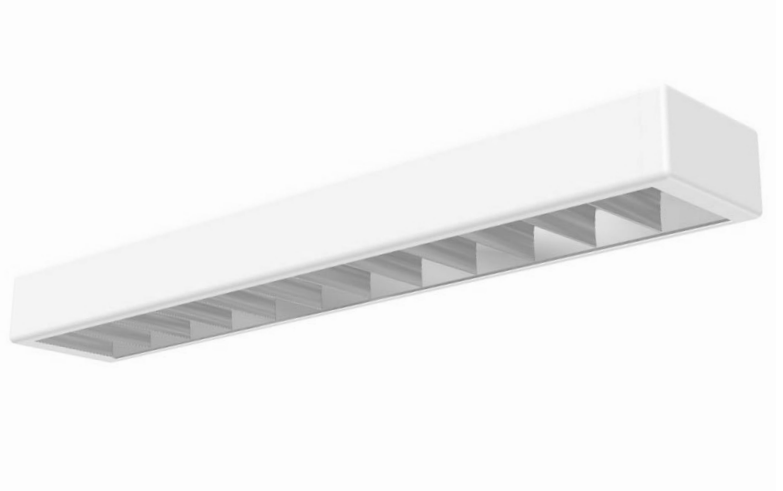


Lytecel Linear LL4MF8LR254

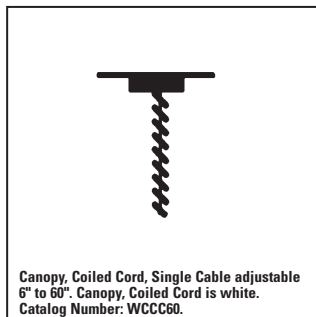
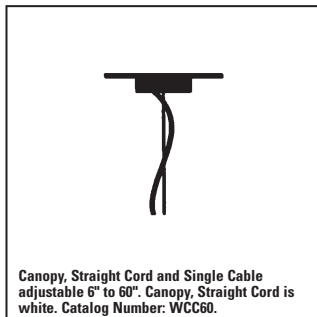
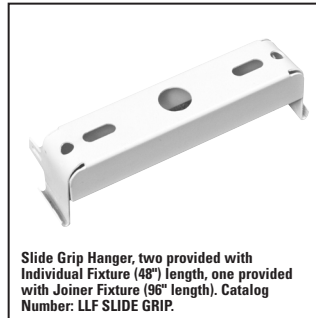
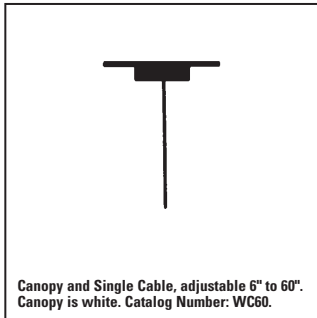
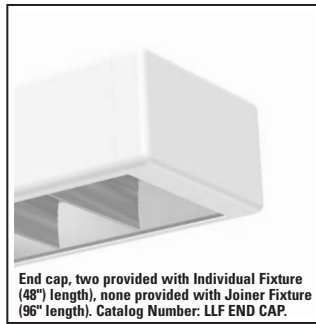
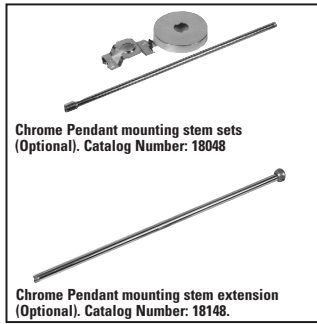
Downlight, Surface/Pendant, 4-5/8" Deep, 8-9/16" Wide
48" or 96" Nominal Lengths (Without End Caps), 2 Lamp T5

Features

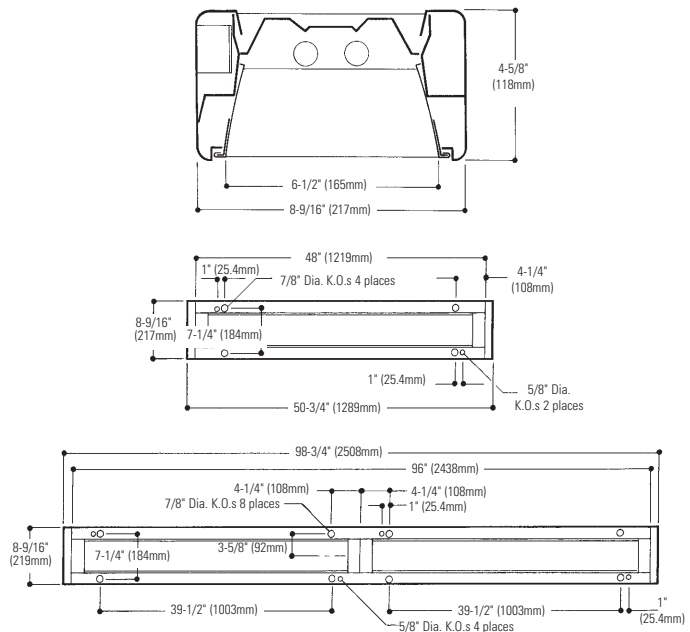
- Downlight surface/pendant.
- Softly rounded corners and edges create a subtle architectural appearance.
- 48" and 96" modular lengths without end caps.
- 48" long louver gives an uninterrupted louver appearance when row mounted.
- No visible fasteners.
- Self-aligning ends for hairline joints in continuous row mounting.
- Efficiency 68.7% (8 cell). Efficiency 62.2% (12 cell).
- Spacing ratio 1.5 (8 cell and 12 cell).
- 20 gauge body.
- Die-cast aluminum end caps.
- Pre-anodized low iridescence semi-specular aluminum parabolic louver with protective film dust bag (standard).
- 95% reflective specular aluminum top reflector.
- Spring-loaded latches.
- Bead safety chain allows louver to be suspended safely for relamping.
- Meets New York City requirements.



Mounting Methods/Features



Dimensions



Job Information

Type:

Job Name:

Cat. No.:

Lamp(s):

Volts/Ballast:

Lightolier a Genlyte company www.lightolier.com
 Technical Information: (978) 657-7600 • Fax (978) 658-0595
 631 Airport Road, Fall River, MA 02720 • (508) 679-8131 • Fax (508) 674-4710
 We reserve the right to change details of design, materials and finish.
 © 2005 a Genlyte company
 A0902

Section 5/Folio K35-12



Lytecel Linear LL4MF8LR254

Page 2 of 2

Downlight, Surface/Pendant, 4-5/8" Deep, 8-9/16" Wide, 48" or 96" Nominal Lengths (Without End Caps), 2 Lamp T5

Model No. LL4MF8LR254120PG (8 Cell)

LER = FP - 63.3 IW - 109 BF - 1.00
Comparative yearly lighting energy cost per 1000 lumens = \$3.79

Report Number: G2005017
Catalog Number: LL4MF8LR254120PG
Lamp: FP54/835 HO
Luminaire: LL4 with reflector, 8 cell louver
Ballast: B254PUNV-D
109.0 Watts
Report is based on 5000 Lumens per lamp.
Efficiency: 68.7%
CIE Type-Direct-Indirect
Plane: 0-Deg 90-Deg
Spacing Criteria: 1.2 1.5
Shielding Angles: 65 55
Plane: 0-Deg 90-Deg
Luminous Length: 48.000 6.480

CANDELA DISTRIBUTION

	0.0	45.0	90.0	FLUX
0	2219	2219	2219	
5	2206	2319	2395	223
15	2123	2511	2574	695
25	1966	2604	3306	1245
35	1734	2957	3933	1816
45	1297	2713	2750	1775
55	733	1316	508	886
65	114	167	106	182
75	39	28	21	34
85	11	7	5	9
90	0	0	0	0

Model No. LL4MF12LR254120PG (12 Cell)

LER = FP - 56.8 IW - 109 BF - 1.00
Comparative yearly lighting energy cost per 1000 lumens = \$4.23

Report Number: G2005014
Catalog Number: LL4MF12LR254120PG
Lamp: FP54/835 HO
Luminaire: LL4 with reflector, 12 cell louver
Ballast: B254PUNV-D
109.0 Watts
Report is based on 5000 Lumens per lamp.
Efficiency: 62.2%
CIE Type-Direct-Indirect
Plane: 0-Deg 90-Deg
Spacing Criteria: 1.2 1.5
Shielding Angles: 65 55
Plane: 0-Deg 90-Deg
Lumen Length: 48.000 6.480

CANDELA DISTRIBUTION

	0.0	45.0	90.0	FLUX
0	2239	2239	2239	
5	2235	2288	2336	221
15	2154	2457	2493	682
25	1985	2589	3372	1246
35	1624	2963	3894	1779
45	1165	2421	2569	1606
55	295	850	389	555
65	86	85	63	97
75	31	24	14	26
85	8	6	4	7
90	0	0	0	0

COEFFICIENTS OF UTILIZATION - ZONAL CAVITY METHOD. EFFECTIVE FLOOR CAVITY REFLECTANCE 0.20

RC	80	50	30	10
RW 70	74	72	70	68
70	66	63	60	57
60	55	53	50	49
50	43	41	39	38
40	33	32	31	30
30	25	24	23	22
20	18	17	16	15
10	12	11	10	9

COEFFICIENTS OF UTILIZATION - ZONAL CAVITY METHOD. EFFECTIVE FLOOR CAVITY REFLECTANCE 0.20

RC	80	50	30	10
RW 70	67	65	63	62
60	58	55	53	52
50	46	44	42	41
40	36	35	34	33
30	28	27	26	25
20	21	20	19	18
10	15	14	13	12

LUMINANCE DATA IN CANDELA/SQ. METER

AVERAGE IN DEG.	AVERAGE 0-DEG.	AVERAGE 45-DEG.	AVERAGE 90-DEG.
45	9137.	19113.	19373.
55	6366.	11429.	4412.
65	1344.	1968.	1249.
75	751.	539.	404.
85	629.	400.	286.

ZONAL LUMEN SUMMARY

ZONE	LUMENS	% LAMP	% FIXT
0- 30	2163	21.6	31.5
0- 40	3980	39.8	58.0
0- 60	6641	66.4	96.7
0- 90	6866	68.7	100.0
90-180	0	0.0	0.0
0-180	6866	68.7	100.0

LUMINANCE DATA IN CANDELA/SQ. METER

AVERAGE IN DEG.	AVERAGE 0-DEG.	AVERAGE 45-DEG.	AVERAGE 90-DEG.
45	8207.	17056.	18098.
55	2562.	7382.	3378.
65	1014.	1002.	743.
75	597.	462.	269.
85	457.	343.	229.

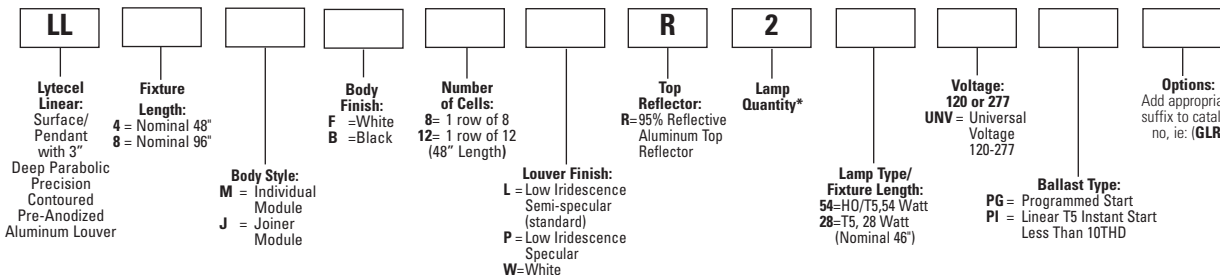
ZONAL LUMEN SUMMARY

ZONE	LUMENS	% LAMP	% FIXT
0- 30	2149	21.5	34.6
0- 40	3928	39.3	63.2
0- 60	6089	60.9	97.9
0- 90	6219	62.2	100.0
90-180	0	0.0	0.0
0-180	6219	62.2	100.0

Ordering Information

Explanation of Catalog Number. Example: LL4MF8LR254120PGGLR

*8" units have lamps in tandem



Options/accessories

Stem Sets: 1/2" diameter tubing, 18" long, chrome plated finish. Catalog Number: **18048**.

Stem Extension Kit: 1/2" diameter tubing, 18" long, chrome plated finish extension. Catalog Number: **18148**.

Single Cable and Canopy. Catalog Number: **WC60**.

Single Cable, Straight Cord and Canopy. Catalog Number: **WCC60**.

Single Cable, Coiled Cord and Canopy. Catalog Number: **WCCC60**.

Electrical Wiring Options: Consult factory.

Fusing: Internal fast-blow fusing. Suffix: **GLR**.

Internal slow-blow fusing. Suffix: **GMF**.

Specifications

Performance: In an installation of 2 lamp 54W luminaires with a room cavity ratio of 1, with reflectance 80% ceiling, 50% wall, 20% floor, the C.U. shall be not less than .74. Candelas at 65° shall not exceed 182 (8 cell). To control veiling reflections, luminaire output in the 30°- 90° zone shall be not less than 68.5%.

Materials: Chassis parts are die-formed 20 gauge code cold rolled steel, End caps are die-cast aluminum with soft rounded corners.

Specifications (continued)

Louver: Pre-anodized aluminum (Coilzak® or equal).

Finish: Louver—low iridescence semi-specular anodized aluminum (standard).

Chassis exterior—semi-gloss (standard) flat acrylic-white baked enamel,

Cavity—white baked enamel. Phosphate undercoating.

Electrical: Thermally protected class "P" ballast, non PCB. If K.O. is within 3" of ballast, use wire suitable for at least 90°.

Labels: I.B.E.W./UL and ULc Listed.

Job Information

Type:

Lightolier a Genlyte company

www.lightolier.com

Technical Information: (978) 657-7600 • Fax (978) 658-0595

631 Airport Road, Fall River, MA 02720 • (508) 679-8131 • Fax (508) 674-4710

We reserve the right to change details of design, materials and finish.

© 2005 a Genlyte company

A0902

Section 5/Folio K35-12

LIGHTOLIER®