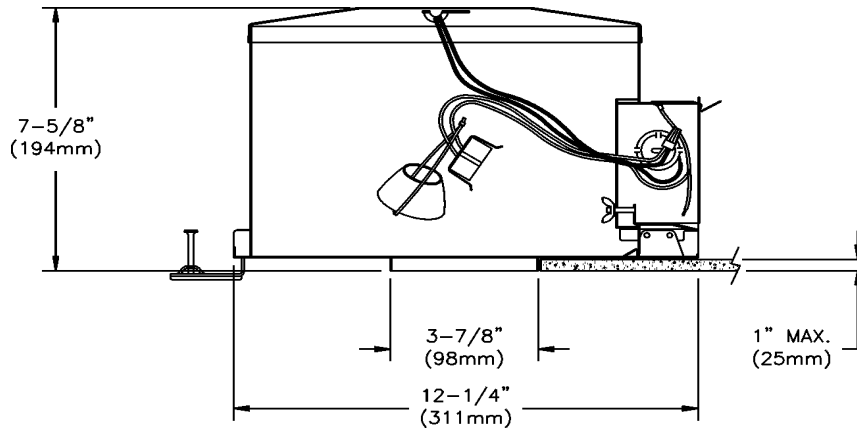
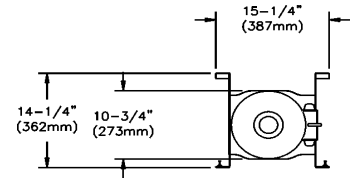




3 3/4" (95mm) aperture
Line Voltage 120V ES/ESD16
IC / Air Seal Frame-In-Kit

Lytecaster
Recessed Downlight

302ESAICX



Complete fixture consists of Reflector Trim & Frame-in Kit. Select each separately

| POWER PACK | CUT-OUT |
|------------------|---------------|
| 302ESAICX | 3 3/4" (95mm) |

| REFLECTOR TRIM |
|---|
| Accepts most 3 3/4" (95mm) 300 serie trims ; see Reflector Trim specification sheets. |

Features

Housing: .032" (#20 ga.) aluminum. CSA certified and UL Listed for direct contact with thermal insulation. Airseal housing minimizes air leakage to less than 2 CFM at 1.57 PSF (or 75pa), which complies with Model Energy Code (Section 602.3.3) and Washing State Energy Code (Section 502.4) and reduces heat loss and condensation in ceiling. Access door fo inspection of junction box.

Mounting Frame: .032 (#20 ga.) aluminum. Accommodates ceilings up to 1" thick. 3/8" deep integral lip. Locks into position along length of mounting bars with locking screw and bendable slot. Four slots are positioned 90° apart to simplify alignment.

Mounting Bars: 16 ga. galvanized steel. Extend from 14" (356mm) to 24" (610mm). "SwiveLock" system permits installation and wiring below the ceiling. Pre-installed No. 6 auger point screws for installation in wood and steel joists. Attaches to T-bar ceilings without the need of accessories.

Junction Box: 2"(51mm) x 4" (102mm) x 3 1/2" (89mm) 22 ga. galvanized steel. CSA certified and UL listed for maximum of 8 No. 12 ga. Integral cable clamp permit attachment of non-metallic (#12 or #14 ga.) cable without tools or additional connector.

Socket : Porcelain body ; Two-pin (GX5.3 base) Pre-wired with 18 ga. Teflon 250° leads to junction box.

Lamp cover : Aluminum heat deflector for 50w MR16 or ES/ESD16 dichroic lamps.

Internal Thermal cut-out: Insures against overheating due to incorrect lamping.

Label : Air Seal

Tested in accordance with ASTM E283 (max 2 cfm @ 75 pa) and comply with WSEC & MEC when installed as instructed.

Labels : CSA, UL

Damp or Wet location rated depending on trim used.

WE RESERVE THE RIGHT TO CHANGE DETAILS OF DESIGN, MATERIALS AND FINISH, IN ANY WAY THAT WILL NOT ALTER INSTALLED APPEARANCE OR REDUCE FUNCTION AND PERFORMANCE.

Lightolier CFI, 3015 Louis Amos Lachine, (Quebec) H8T 1C4

LIGHTOLIER

