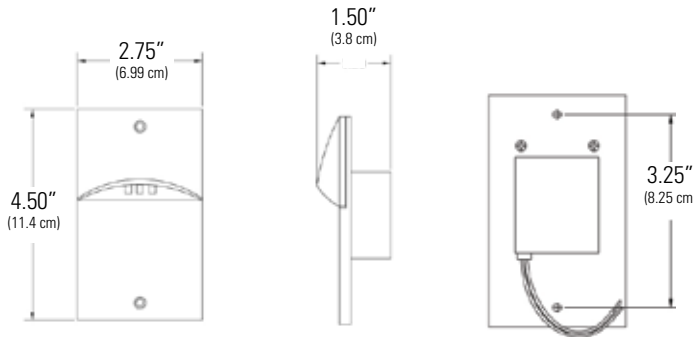


The LP Series is designed to support low-level illumination of stairwells, step landings, wheelchair ramps, exit corridors, theaters, restaurants and hospitals.



Complete Fixture consists of luminaire. Select options and accessories below.

How to Specify:

LP		S	WH
SERIES	INPUT VOLTAGE	LENS	FINISH
LP = Low Level Emergency Lighting Product	1 = 12V AC, DC 2 = 120 AC	S = Satin	WH = White BK = Black IV = Ivory

Features

- 1. Illumination:** The LP Series LED engine utilizes three high performance, 3500k white LEDs combined with a solid-state integral driver circuit. Incorporates a user selectable, three level intensity control.
- 2. Housing:** Assembled from premium die cast aluminum components and is painted in a durable powder coat finish. Standard finishes include black, white and ivory. Assembled as a one-piece device that includes the LED light engine, integral power supply, three level intensity control and a single gang junction box mounting plate. All LED and electrical components are protected by both a frosted acrylic lens and high impact power supply case that will be located within the junction box.
- 3. Electronics:** Designed with all solid-state components and is rated for 10 years of continuous "normally on" use. Standard product incorporates dip switches on rear of product allowing three levels of intensity.
- 4. Versatile Applications:** "Normally On" remote power supplies are available from 100VA to 500VA in 12 VAC. Power supplies (120 VAC input) conform to UL 1598 and are rated as Class 2 Distribution systems. All power supplies are furnished in a UL type 3R enclosure and are provided with thermal type secondary output circuit protection. (Suggested for use with Lightolier's LPS Series)
 - "Normally Off/Emergency" remote power can be provided by any Lightolier 12V emergency lighting product with additional remote capacity. (Suggested for use with Lightolier catalog No. C3250 or C3275.)
 - "Normally On/Emergency" remote power can be provided by Lightolier LM emergency power system. The LM system will support up to 14 LP Series luminaires operating in both continuous duty and emergency operation for 90 minutes.
- 5. Electrical Specifications:** 12 VDC input: 0.47 amps; 12 VAC input: 0.72 amps; 120 VAC input: 0.09 amps

- 6. Installation:** LP is designed for installation in a single gang metallic or die cast junction box. When installing the LP in an outdoor damp or wet location, a single gang rectangular-style junction box will be required by most local electrical codes.
- 7. Operating Temperature Range:** -40°F (-40°C) to 122°F (50°C)
- 8. Warranty:** Five-year full electronics warranty.

Code Compliance

UL 1598 listed. NFPA, BOCA and OSHA illumination standards. Meets ADA specifications for wall mounted lighting fixtures. UL listed for wet locations.

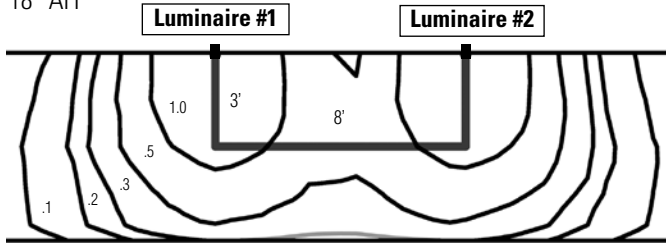
Job Information

Type:

Job Name:
Cat. No.:
Lamp(s):
Notes:

Multiple Luminaries

18" AFF



8' x 3' Path (Shown Above)

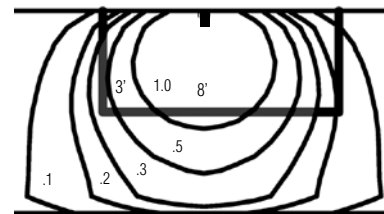
8' x 3' Path (Shown Above)
 Illuminance Values (Fc)
 Average = 1.07
 Maximum = 1.80
 Minimum = 0.50
 Avg/Min Ratio = 2.14
 Max/Min Ratio = 3.60
See Note #1

8' x 4' Path

8' x 4' Path
 Illuminance Values (Fc)
 Average = 1.04
 Maximum = 3.10
 Minimum = 0.30
 Avg/Min Ratio = 3.47
 Max/Min Ratio = 10.33
See Note #1

Single Luminaire

18" AFF



3' x 6' Area (Shown Above)

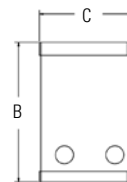
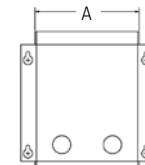
3' x 6' Area (Shown Above)
 Calc. Rep Entrance Area
 Illuminance Values (Fc)
 Average = 1.38
 Maximum = 4.70
 Minimum = 0.30
 Avg/Min Ratio = 4.60
 Max/Min Ratio = 15.67
See Note #1

Note #1: Photometry based on clear lens. Please consult factory for frosted/white lens IES files.

LPS Series "Normally On / Non-Emergency Application" Non-Emergency Power Supply Selection

- 12 VAC applications
- 120 VAC Input Versions rated as Class II Distribution Systems
- UL 3R Enclosures
- Thermal secondary output circuit protection
- Convenient bottom access wiring compartment with terminal lugs

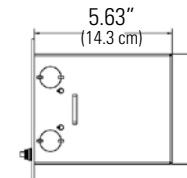
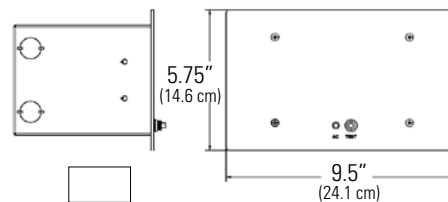
No. of LP Series Luminaries Required	Input Voltage	Output Wattage	Catalog Number	Dimensions		
				A	B	C
10	120	100	LPS100-12-1	4.88"	6.75"	4.63"
15	120	150	LPS150-12-1	4.88"	6.75"	4.63"
25	120	250	LPS250-12-1	4.88"	6.75"	4.63"
30	120	300	LPS300-12-1	4.88"	6.75"	4.63"
30	277	300	LPS300-12-2	4.88"	6.75"	4.63"
50	120	500	LPS500-12-1	5.63"	8.25"	5.25"
50	277	500	LPS500-12-2	5.63"	8.25"	5.25"



C3 Series "Normally Off / Emergency" Application

- 12 VDC Applications
- Maintenance-free, sealed lead calcium battery
- 50 watt can operate maximum 8 LP Luminaire
- 75 watt can operate maximum 13 LP luminaires

C3	2		L	
SERIES VOLTAGE	DC WATTAGE	OUTPUT	BATTERY FINISH	TRIM COVER
C3 = C3 Series Power Module	2 = 12 Volt	50 = 50 Watts 75 = 75 Watts	L = Sealed Lead Calcium	W = White B = Black

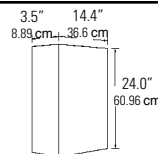


See C3 spec sheet for full details

LM Series "Normally On / Emergency" Application

- NEMA 1 Enclosure
- Maintenance-free, sealed lead calcium battery
- Can operate 14 LP luminaires

LM		
Series	Input/Output Voltages	Mounting Configuration
LM = Mini - Interruptible Power Supplies	1 = 120V/120V w/o Light Switch Option 2 = 120V/120V w/ Light Switch Option 3 = 277V/277V w/o Light Switch Option 4 = 277V/277V w/ Light Switch Option 5 = 120V/12V w/o Light Switch Option 6 = 120V/12V w/ Light Switch Option 7 = 277V/12V w/o Light Switch Option 8 = 277V/12V w/ Light Switch Option	CM = Ceiling Plenum Installation* SM = Surface Wall Mount RM = Recessed Wall Mount**



	150 VA
Total Unit w/ Battery	50 lbs. (22.7 kg)

See LM spec sheet for full details

Job Information Type:

631 Airport Road, Fall River, MA 02720 • (508) 679-8131 • Fax (508) 674-4710
 We reserve the right to change details of design, materials and finish.
 www.lightolier.com © 2009 Philips Group • E0109