

Lytecel Linear LL4MF8LX254

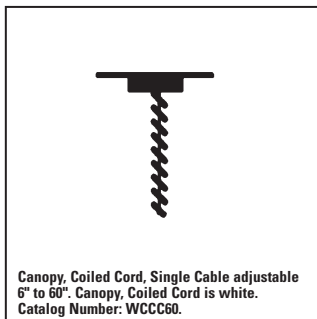
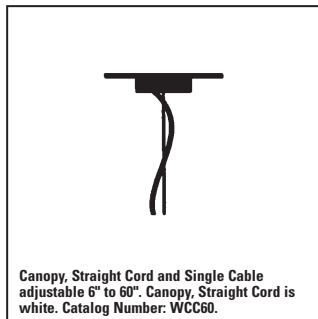
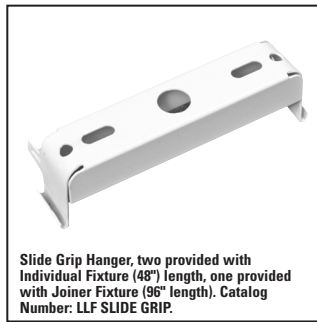
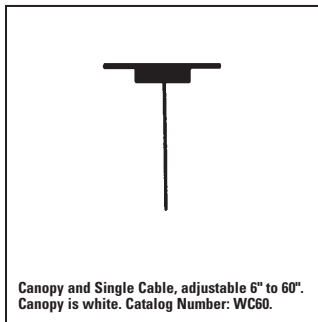
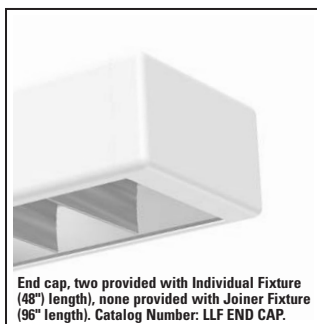
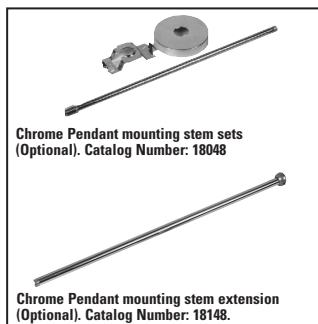
Uplight/Downlight, Pendant, 4-5/8" Deep, 8-9/16" Wide
48" or 96" Nominal Lengths (Without End Caps), 2 Lamp T5

Features

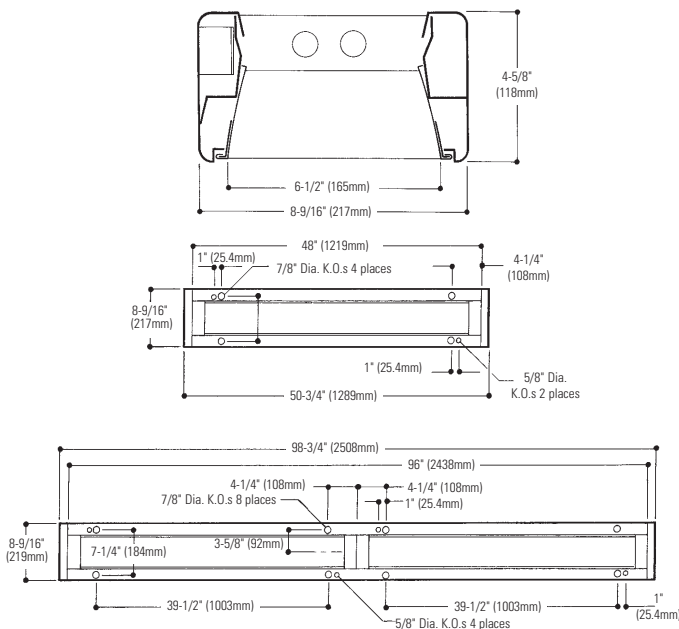
- Uplight/Downlight, Pendant.
- Softly rounded corners and edges create a subtle architectural appearance.
- 48" and 96" modular lengths without end caps..
- 48" long louver gives an uninterrupted louver appearance when row mounted.
- No visible fasteners.
- Self-aligning ends for hairline joints in continuous row mounting.
- Efficiency 81.6% (8 cell).
- Spacing ratio 1.9 (8 cell), 2.0 (12 cell).
- Efficiency 78.0% (12 cell).
- 20 gauge body.
- Die-cast aluminum end caps.
- Pre-anodized low iridescence semi-specular aluminum parabolic louver with protective film dust bag (standard).
- Spring-loaded latches.
- Bead safety chain allows louver to be suspended safely for relamping.
- Meets New York City Code requirements.



Mounting Methods/Features



Dimensions



Job Information	Type:
Job Name:	
Cat. No.:	
Lamp(s):	
Volts/Ballast:	

Lightlier a Genlyte company www.lightlier.com
 Technical Information: (978) 657-7600 • Fax (978) 658-0595
 631 Airport Road, Fall River, MA 02720 • (508) 679-8131 • Fax (508) 674-4710
 We reserve the right to change details of design, materials and finish.
 © 2005 a Genlyte company
 A0902

LIGHTLIER



Lytecel Linear LL4MF8LX254

Page 2 of 2

Uplight/Downlight, Pendant, 4-5/8" Deep, 8-9/16" Wide, 48" or 96" Nominal Lengths (Without End Caps), 2 Lamp T5

Model No. LL4MF8LX254120PG (8 Cell)

LER = FP - 65.3 IW - 125 BF - 1.00
Comparative yearly lighting energy cost per 1000 lumens = \$3.68

Report Number: G2004120
Catalog Number: LL4MF8LX254120PG
Lamp: FP54/835 HO
Luminaire: LL4 with no reflector, 8 cell louver
Ballast: QTP2X54T5HO-UNV PSN 125.0 Watts
Report is based on 5000 Lumens per lamp.
Efficiency 81.6%
CIE Type-Direct-Indirect
Plane: 0-Deg 90-Deg
Spacing Criteria: 1.2 1.9
Shielding Angles: 65 55
Plane: 0-Deg 90-Deg
Luminous Length: 48.000 6.480

CANDELA DISTRIBUTION

	0.0	45.0	90.0	FLUX
0	1110	1110	1110	
5	1092	1110	1124	106
15	1032	1124	1242	323
25	931	1226	1557	575
35	800	1388	1801	842
45	620	1244	1461	849
55	348	684	380	466
65	54	112	82	105
75	20	25	22	27
85	7	10	9	11
90	4	8	8	

COEFFICIENTS OF UTILIZATION - ZONAL CAVITY METHOD. EFFECTIVE FLOOR CAVITY REFLECTANCE 0.20

RC	80	50	30	10
1	79	76	73	57
2	72	67	62	51
3	66	59	54	45
4	61	52	45	40
5	56	47	41	36
6	51	42	36	32
7	47	38	32	29
8	44	34	28	27
9	41	31	25	24
10	38	28	23	22

ZONAL LUMEN SUMMARY

ZONE	LUMENS	% LAMP	% FIXT
0- 30	1004	10.0	12.3
0- 40	1846	18.5	22.6
0- 60	3162	31.6	39.8
0- 90	3304	33.0	40.5
90-120	1484	14.8	18.2
90-130	2371	23.7	29.1
90-150	3886	38.9	47.6
90-180	4853	48.5	50.5
0-180	8157	81.6	100.0

LUMINANCE DATA IN CANDELA/SQ. METER

AVERAGE IN DEG.	AVERAGE 0-DEG.	AVERAGE 45-DEG.	AVERAGE 90-DEG.
45	3971.	6170.	5813.
55	2645.	3712.	1604.
65	524.	694.	373.
75	280.	187.	112.
85	187.	98.	54.

Model No. LL4MF12LX254120PG (12 Cell)

LER = FP - 62.4 IW - 125 BF - 1.00
Comparative yearly lighting energy cost per 1000 lumens = \$3.85

Report Number: G2004118
Catalog Number: LL4MF12LX254120PG
Lamp: FP54/835 HO
Luminaire: LL4 with no reflector, 12 cell louver
Ballast: QTP2X54T5HO-UNV PSN 125.0 Watts
Report is based on 5000 Lumens per lamp.
Efficiency 78.0%
CIE Type-Direct-Indirect
Plane: 0-Deg 90-Deg
Spacing Criteria: 1.1 2.0
Shielding Angles: 65 55
Plane: 0-Deg 90-Deg
Lumen Length: 48.000 6.480

CANDELA DISTRIBUTION

	0.0	45.0	90.0	FLUX
0	1062	1062	1062	
5	1050	1061	1075	102
15	981	1065	1181	307
25	867	1174	1597	561
35	731	1375	1798	818
45	544	1108	1447	779
55	122	430	306	291
65	39	51	52	58
75	16	22	17	22
85	6	10	8	10
90	4	8	9	

COEFFICIENTS OF UTILIZATION - ZONAL CAVITY METHOD. EFFECTIVE FLOOR CAVITY REFLECTANCE 0.20

RC	80	50	30	10
1	75	72	69	53
2	69	64	59	48
3	63	56	51	43
4	58	50	45	38
5	53	45	39	34
6	49	40	34	31
7	45	36	30	28
8	42	33	27	25
9	39	30	24	23
10	36	27	22	21

ZONAL LUMEN SUMMARY

ZONE	LUMENS	% LAMP	% FIXT
0- 30	970	9.7	12.4
0- 40	1788	17.9	22.9
0- 60	2858	28.6	36.6
0- 90	2948	29.5	37.8
90-120	1484	14.8	19.0
90-130	2371	23.7	30.4
90-150	3886	38.9	49.8
90-180	4853	48.5	62.2
0-180	7801	78.0	100.0

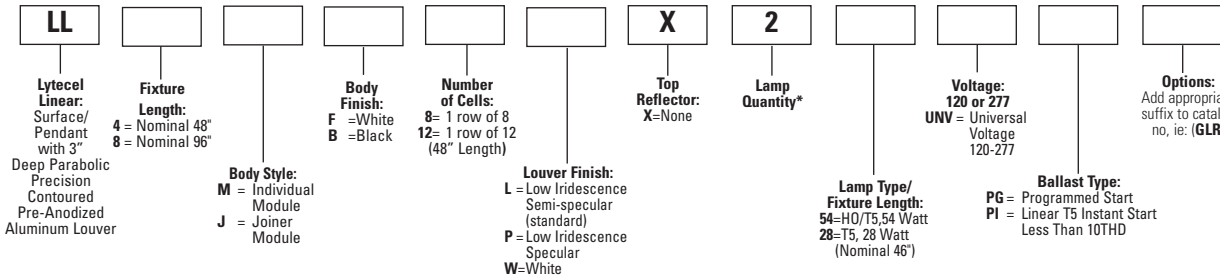
LUMINANCE DATA IN CANDELA/SQ. METER

AVERAGE IN DEG.	AVERAGE 0-DEG.	AVERAGE 45-DEG.	AVERAGE 90-DEG.
45	3484.	5496.	5856.
55	927.	2334.	1291.
65	379.	316.	237.
75	224.	165.	87.
85	160.	98.	48.

Ordering Information

Explanation of Catalog Number. Example: LL4MF8LX254120PGGLR

*8" units have lamps in tandem



Options/accessories

- Stem Sets:** 1/2" diameter tubing, 18" long, chrome plated finish. Catalog Number: **18048**.
- Stem Extension Kit:** 1/2" diameter tubing, 18" long, chrome plated finish extension. Catalog Number: **18148**.
- Single Cable and Canopy.** Catalog Number: **WC60**.
- Single Cable, Straight Cord and Canopy.** Catalog Number: **WCC60**.
- Single Cable, Coiled Cord and Canopy.** Catalog Number: **WCCC60**.
- Electrical Wiring Options:** Consult factory.
- Fusing:** Internal fast-blow fusing. Suffix: **GLR**.
Internal slow-blow fusing. Suffix: **GMF**.

Specifications

Performance: In an installation of 2 lamp 54W luminaires with a room cavity ratio of 1, with reflectance 80% ceiling, 50% wall, 20% floor, the C.U. shall be not less than .76. Candelas at 65° shall not exceed 112 (8 cell). To control veiling reflections, luminaire output in the 30°-90° zone shall be not less than 87.7%.

Materials: Chassis parts are die-formed 20 gauge code cold rolled steel, End caps are die-cast aluminum with soft rounded corners.

Specifications (continued)

- Louver:** Pre-anodized aluminum (Coilzak® or equal).
- Finish:** Louver—low iridescence semi-specular anodized aluminum (standard).
- Chassis exterior**—semi-gloss (standard) flat acrylic-white baked enamel,
- Cavity**—white baked enamel. Phosphate undercoating.
- Electrical:** Thermally protected class "P" ballast, non PCB. If K.O. is within 3" of ballast, use wire suitable for at least 90°.
- Labels:** I.B.E.W./UL and ULc Listed.

Job Information Type:

Lightolier a Genlyte company www.lightolier.com
Technical Information: (978) 657-7600 • Fax (978) 658-0595
631 Airport Road, Fall River, MA 02720 • (508) 679-8131 • Fax (508) 674-4710
We reserve the right to change details of design, materials and finish.
© 2005 a Genlyte company
A0902

Section 5/Folio K35-13

LIGHTOLIER®