

## Ordering Information

Family	Distribution	Lamp Type	No. of Lamps	Housing	Module Length	Wiring	Voltage	Ballast	Finish
<b>BSL</b>	<b>6</b> 6 = Direct/ Indirect	<b>T</b> T = T8	<b>03</b> 03 = 3 Light	<b>CN</b> CN = Cutout w/baffles	<b>04</b> = 4' <b>08</b> = 8' <b>12</b> = 12'	<b>1</b> = 1cct. <b>2</b> = 2cct. <b>3</b> = 1cct. w/EC/NL <b>4</b> = 2cct. w/EC/NL <b>5</b> = 1cct. w/EM Battery <b>6</b> = 2cct. w/EM Battery <b>7</b> = 1cct. w/Dimming <b>8</b> = 1cct. w/1cct. Thru wire <b>9</b> = 2cct. w/1cct. Thru wire <b>Note:</b> Please consult wiring section of spec sheets for more wiring options.	<b>1</b> = 120V <b>2</b> = 277V	<b>E</b> = Standard <20% THD <b>F</b> = Standard <20% THD w/fusing <b>G</b> = <10% THD, Instant Start <b>H</b> = <10% THD, Instant Start w/fusing <b>J</b> = <10% THD, Program Start <b>K</b> = <10% THD, Program Start w/fusing	<b>C</b> = Custom Color <b>W</b> = Standard White

## Specifications

### Features

1. Housing: die-formed 20ga. cold rolled steel
2. End Set: die-cast metal with baked powder coat finish
3. Lamping: three T8 lamps
4. Configuration: 4', 8' and 12' module lengths or continuous rows
5. Ballasts: electronic 120V or 277V

### Finish

High-quality white powder coat with textured matte finish. Custom colors available. Consult factory.

### Mounting

Aircraft cable gripper is tamper-resistant and provides infinite vertical adjustment capability. Aircraft cable, crimp and cable gripper independently tested to meet stringent safety requirements.

### Electrical

All luminaires are factory pre-wired to module ends with quick-wire connectors.

### Joints & Intersections

Self-aligning joining system with hands-free pre-joining wire access.

### Labels

UL, CSA standards.

## Ordering Instructions

### Individual Fixtures

1. Determine the number of individual modules required
2. Order one end set per module
3. Order one non-power mount per module
4. Order one power mount per module

### Continuous Rows\*

1. Determine run length
2. Order the appropriate number and length of modules for complete run
3. Order one end set for each run
4. Order one non-power mount for each module
5. Order one power mount per run
6. Order one joiner per module minus one (e.g. 3 modules requires 2 joiners)

\*Note: Some runs may require additional power mounts. Please see the 'Run Configuration' table on next page for more details.

### Job Information

### Type:

**Job Name:**

**Cat. No.:**

**Lamp(s):**

**Notes:**

Lightolier a Genlyte Company

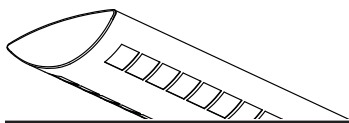
www.lightolier.com

631 Airport Road, Fall River, MA 02720 • (508) 679-8131 • Fax (508) 674-4710

We reserve the right to change details of design, materials and finish.

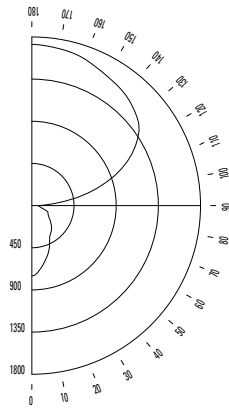
© 2005 Genlyte Group LLC • 0205 Rev.1

**LIGHTOLIER**



## Performance

### Candlepower Curve



**Report No:** 2101590  
**Lamps:** F32T8  
**Lumens per Lamp:** 2950  
**Efficiency:** 84.1%  
**Up:** 82.2% **Down:** 17.8%

### Candlepower Summary

ZONE DEG.	CANDLEPOWER				
	0	22.5	45	67.5	90
180	1740	1740	1740	1740	1740
175	1730	1730	1733	1729	1730
165	1668	1665	1681	1689	1696
155	1554	1555	1597	1616	1631
145	1389	1402	1479	1551	1582
135	1179	1208	1357	1469	1511
125	927	998	1208	1339	1377
115	647	777	1002	1058	1096
105	353	525	655	647	676
95	91	147	213	186	212
90	7	29	45	53	51
85	23	35	53	58	62
75	52	62	98	96	102
65	98	117	128	152	169
55	201	191	194	186	195
45	329	282	260	256	262
35	452	391	339	316	322
25	568	508	472	418	412
15	663	626	592	558	562
5	720	712	701	681	685
0	727	727	727	727	727

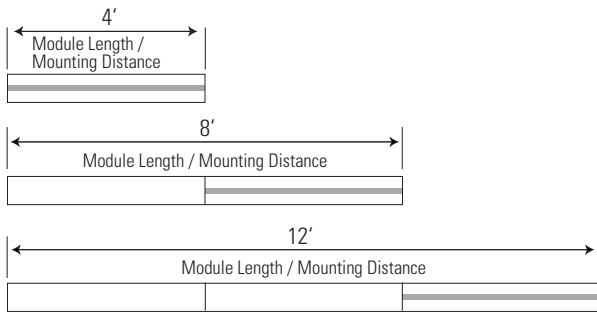
### Coefficients of Utilization

	% EFFECTIVE CEILING CAVITY REFLECTANCE								
	80			70			50		
	% WALL REFLECTANCE								
	50	30	10	50	30	10	50	30	10
0	83	83	83	73	73	73	55	55	55
1	72	69	66	64	61	59	48	46	44
2	63	58	54	56	52	48	42	39	37
3	55	50	45	49	44	40	37	34	31
4	49	43	38	43	38	34	33	29	26
5	43	37	32	38	33	29	29	25	22
6	39	32	28	34	29	25	26	22	19
7	35	29	24	31	26	22	24	20	17
8	31	25	21	28	23	19	21	18	15
9	29	23	19	25	20	17	19	16	13
10	26	20	17	23	18	15	18	14	12

### Zonal Lumen Summary

ZONE	LUMENS	% BARE LAMP	% LUMINAIRE
0-90	1328.5	15.0	17.8
90-180	6118.5	69.1	82.2
0-180	7447	84.1	100.0

## Module Lengths & Mounting Distances



**Note:** Shaded area indicates locations of emergency sections (emergency wiring controls all lamps or optional battery pack controls one or two lamps).

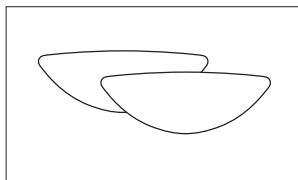
## Run Configuration

Run Length	4' Module	8' Module	12' Module	Joiner	End Set	Mount	Power Mount*
4' run	1				1	1	1
8' run		1			1	1	1
12' run			1		1	1	1
16' run		2		1	1	2	1
20' run		1	1	1	1	2	1
24' run			2	1	1	2	1
28' run		2	1	2	1	3	1
32' run		1	2	2	1	3	1

**\*Note:** Additional power mounts may be required for some runs with T5 HO lamping options, longer runs, and runs with wiring options that are more complex. Please consult factory for assistance.

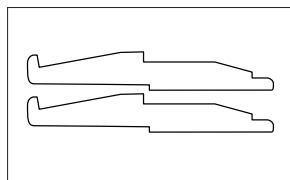
## System Components & Accessories

### End Set



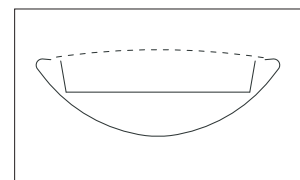
**BSLESW** = suspended standard white

### Joiner



**BSLSJ** = suspended joiner

### Dust Cover



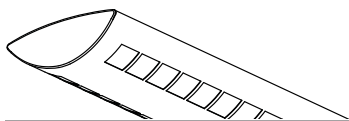
**BS LCS** = 4' suspended dust cover

## Job Information

## Type:

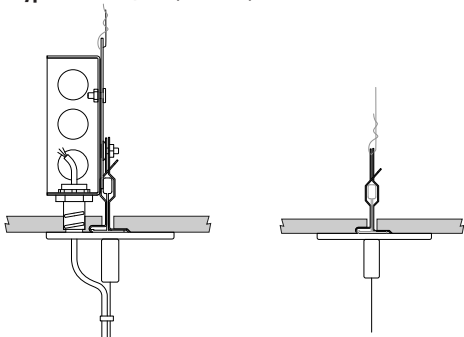
**Lightolier** a Genlyte Company [www.lightolier.com](http://www.lightolier.com)  
 631 Airport Road, Fall River, MA 02720 • (508) 679-8131 • Fax (508) 674-4710  
 We reserve the right to change details of design, materials and finish.  
 © 2005 Genlyte Group LLC • 0205 Rev.1

**LIGHTOLIER**



## Mounting Options

### Mount Type: T-Bar 15/16" (On-Grid)\*



- 65 lbs maximum load
- Canopy: Diameter of 3 3/4" x 7/32"
- Cable: 7x7 stranded aircraft cable
- Supported by T-bar and secured to structure
- J-Box: 4" square (supplied by others)
- Fully adjustable vertically at fixture

1-Power Mount

Non-Power Mount

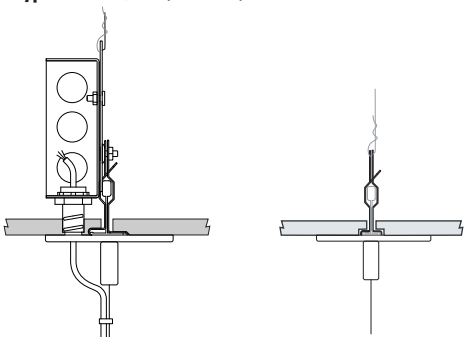


Supension Length

	2'	4'	8'	12'
1-Power Mount				
3 Conductor	<b>BSLM6102P13</b>	<b>BSLM6104P13</b>	<b>BSLM6108P13</b>	<b>BSLM6112P13</b>
4 Conductor	<b>BSLM6102P14</b>	<b>BSLM6104P14</b>	<b>BSLM6108P14</b>	<b>BSLM6112P14</b>
7 Conductor	<b>BSLM6102P17</b>	<b>BSLM6104P17</b>	<b>BSLM6108P17</b>	<b>BSLM6112P17</b>

Non-Power Mount	<b>BSLM6102N</b>	<b>BSLM6104N</b>	<b>BSLM6108N</b>	<b>BSLM6112N</b>
-----------------	------------------	------------------	------------------	------------------

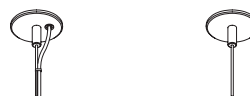
### Mount Type: T-Bar 9/16" (On-Grid)\*



- 65 lbs maximum load
- Canopy: Diameter of 3 3/4" x 7/32"
- Cable: 7x7 stranded aircraft cable
- Supported by T-bar and secured to structure
- J-Box: 4" square (supplied by others)
- Fully adjustable vertically at fixture

1-Power Mount

Non-Power Mount

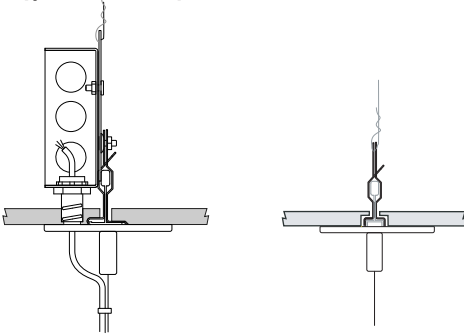


Supension Length

	2'	4'	8'	12'
1-Power Mount				
3 Conductor	<b>BSLM6202P13</b>	<b>BSLM6204P13</b>	<b>BSLM6208P13</b>	<b>BSLM6212P13</b>
4 Conductor	<b>BSLM6202P14</b>	<b>BSLM6204P14</b>	<b>BSLM6208P14</b>	<b>BSLM6212P14</b>
7 Conductor	<b>BSLM6202P17</b>	<b>BSLM6204P17</b>	<b>BSLM6208P17</b>	<b>BSLM6212P17</b>

Non-Power Mount	<b>BSLM6202N</b>	<b>BSLM6204N</b>	<b>BSLM6208N</b>	<b>BSLM6212N</b>
-----------------	------------------	------------------	------------------	------------------

### Mount Type: T-Bar 9/16" by 5/16" Slot Grid (On-Grid)\*



- 65 lbs maximum load
- Canopy: Diameter of 3 3/4" x 7/32"
- Cable: 7x7 stranded aircraft cable
- Supported by T-bar and secured to structure
- J-Box: 4" square (supplied by others)
- Fully adjustable vertically at fixture

1-Power Mount

Non-Power Mount



Supension Length

	2'	4'	8'	12'
1-Power Mount				
3 Conductor	<b>BSLM6302P13</b>	<b>BSLM6304P13</b>	<b>BSLM6308P13</b>	<b>BSLM6312P13</b>
4 Conductor	<b>BSLM6302P14</b>	<b>BSLM6304P14</b>	<b>BSLM6308P14</b>	<b>BSLM6312P14</b>
7 Conductor	<b>BSLM6302P17</b>	<b>BSLM6304P17</b>	<b>BSLM6308P17</b>	<b>BSLM6312P17</b>

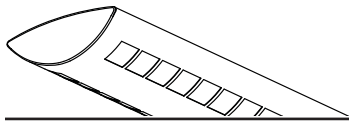
Non-Power Mount	<b>BSLM6302N</b>	<b>BSLM6304N</b>	<b>BSLM6308N</b>	<b>BSLM6312N</b>
-----------------	------------------	------------------	------------------	------------------

## Job Information

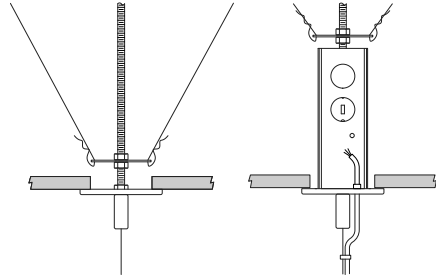
## Type:

**Lightolier** a Genlyte Company [www.lightolier.com](http://www.lightolier.com)  
 631 Airport Road, Fall River, MA 02720 • (508) 679-8131 • Fax (508) 674-4710  
 We reserve the right to change details of design, materials and finish.  
 © 2005 Genlyte Group LLC • 0205 Rev.1

\*Note: Standard T-bar mounts are currently not available for tegular tile ceilings, however certain tegular tile / T-bar combinations may be supported by the use of the slot-grid mount. For more information, please consult factory.



**Mount Type: T-Bar Fixed Position (1/4-20 Threaded Rod)**



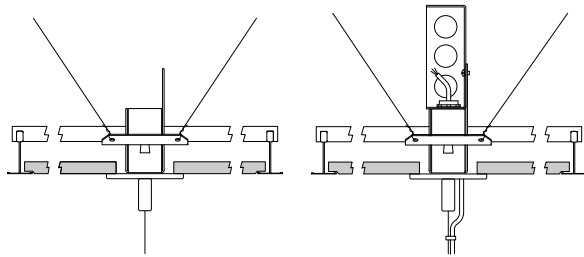
- Meets UBC, OSHPD and DSA seismic requirements
- Canopy: Diameter of 5 1/4" x 3/4" (power)
- Cable: 7x7 stranded aircraft cable
- Tile cut-out hole: Diameter of 2 1/2" (power) or 3/4" (non-power)
- J-Box: Integral J-Box supplied
- 1/4 - 20 all thread rod (supplied by others)
- Fully vertically adjustable at fixture



**Supension Length**

	2'	4'	8'	12'
1-Power Mount				
3 Conductor	<b>BSLM2102P13</b>	<b>BSLM2104P13</b>	<b>BSLM2108P13</b>	<b>BSLM2112P13</b>
4 Conductor	<b>BSLM2102P14</b>	<b>BSLM2104P14</b>	<b>BSLM2108P14</b>	<b>BSLM2112P14</b>
2-Power Mount				
3 Conductor	<b>BSLM2102P23</b>	<b>BSLM2104P23</b>	<b>BSLM2108P23</b>	<b>BSLM2112P23</b>
Non-Power Mount	<b>BSLM2102N</b>	<b>BSLM2104N</b>	<b>BSLM2108N</b>	<b>BSLM2112N</b>

**Mount Type: T-Bar Variable Position**



- Meets UBC, OSHPD and DSA seismic requirements
- Canopy: Diameter of 3" x 7/32"
- Cable: 7x7 stranded aircraft cable
- Tile cut-out hole: Diameter of 2 1/4"
- Aligned by T-bar and secured to structure
- J-Box 4" square (supplied by others)
- Fully vertically adjustable at fixture
- Adjusts to both 1" and 1 1/2" high T-bar systems

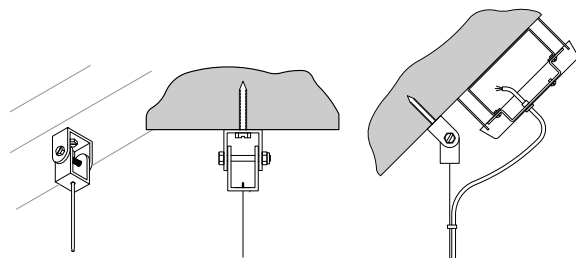


**Supension Length**

	2'	4'	8'	12'
1-Power Mount				
3 Conductor	<b>BSLM5102P13</b>	<b>BSLM5104P13</b>	<b>BSLM5108P13</b>	<b>BSLM5112P13</b>
4 Conductor	<b>BSLM5102P14</b>	<b>BSLM5104P14</b>	<b>BSLM5108P14</b>	<b>BSLM5112P14</b>
7 Conductor	<b>BSLM5102P17</b>	<b>BSLM5104P17</b>	<b>BSLM5108P17</b>	<b>BSLM5112P17</b>
2-Power Mount				
3 Conductor	<b>BSLM5102P23</b>	<b>BSLM5104P23</b>	<b>BSLM5108P23</b>	<b>BSLM5112P23</b>
Non-Power Mount	<b>BSLM5102N</b>	<b>BSLM5104N</b>	<b>BSLM5108N</b>	<b>BSLM5112N</b>

**\*Note:** Supports 15/16", 9/16" and slot grid ceiling types.

**Mount Type: Support or Open-Joist Ceiling**



- Meets UBC, OSHPD and DSA seismic requirements
- Canopy: Diameter of 5 1/4" x 3/4" (power)
- Cable: 7x7 stranded aircraft cable
- Versatile mount, fully adjustable to accomodate open sloped ceilings
- J-Box: 4" octogonal box (supplied by others)
- Fully vertically adjustable at fixture



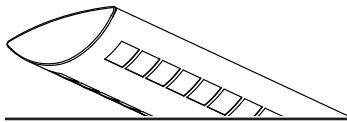
**Supension Length**

	2'	4'	8'	12'
1-Power Mount				
3 Conductor	<b>BSLM3102P13</b>	<b>BSLM3104P13</b>	<b>BSLM3108P13</b>	<b>BSLM3112P13</b>
4 Conductor	<b>BSLM3102P14</b>	<b>BSLM3104P14</b>	<b>BSLM3108P14</b>	<b>BSLM3112P14</b>
7 Conductor	<b>BSLM3102P17</b>	<b>BSLM3104P17</b>	<b>BSLM3108P17</b>	<b>BSLM3112P17</b>
2-Power Mount				
3 Conductor	<b>BSLM3102P23</b>	<b>BSLM3104P23</b>	<b>BSLM3108P23</b>	<b>BSLM3112P23</b>
Non-Power Mount	<b>BSLM3102N</b>	<b>BSLM3104N</b>	<b>BSLM3108N</b>	<b>BSLM3112N</b>

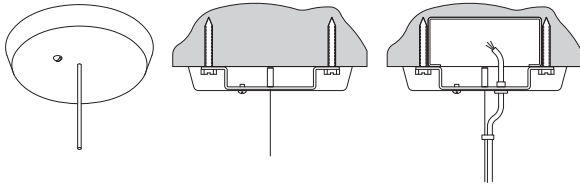
**Job Information** **Type:**

**Lightolier** a Genlyte Company [www.lightolier.com](http://www.lightolier.com)  
 631 Airport Road, Fall River, MA 02720 • (508) 679-8131 • Fax (508) 674-4710  
 We reserve the right to change details of design, materials and finish.  
 © 2005 Genlyte Group LLC • 0205 Rev.1

**LIGHTOLIER**



**Mount Type: Non-Accessible Ceilings (concrete, gypsum etc.)**



- Meets UBC, OSHPD and DSA seismic requirements
- Canopy: Diameter of 5 1/4" x 3/4" (power)
- Cable: 7x7 stranded aircraft cable
- Mountable on 0° - 15° sloped ceiling
- Optional Chicago Plenum approved version available (A4)
- J-Box: 4" octagonal box (supplied by others)
- Fully vertically adjustable at fixture

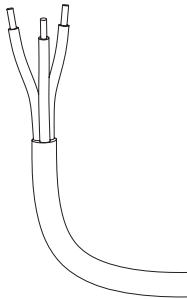


**Supension Length**

	2'	4'	8'	12'
1-Power Mount				
3 Conductor	<b>BSLM1102P13</b>	<b>BSLM1104P13</b>	<b>BSLM1108P13</b>	<b>BSLM1112P13</b>
4 Conductor	<b>BSLM1102P14</b>	<b>BSLM1104P14</b>	<b>BSLM1108P14</b>	<b>BSLM1112P14</b>
7 Conductor	<b>BSLM1102P17</b>	<b>BSLM1104P17</b>	<b>BSLM1108P17</b>	<b>BSLM1112P17</b>
2-Power Mount				
3 Conductor	<b>BSLM1102P23</b>	<b>BSLM1104P23</b>	<b>BSLM1108P23</b>	<b>BSLM1112P23</b>
Non-Power Mount	<b>BSLM1102N</b>	<b>BSLM1104N</b>	<b>BSLM1108N</b>	<b>BSLM1112N</b>

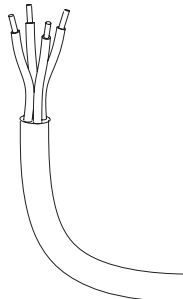
## Cord Types

**3 Conductor**



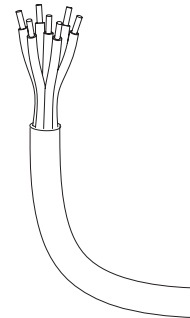
- Max. 10 amps
- Max. 300V

**4 Conductor**



- Max. 10 amps in a 1 circuit application
- Max. 5 amps per circuit in a 2 circuit application
- Max. 300V
- Good for 2 circuit feeds or a 1 circuit feed with a battery pack hot lead
- 120V or 277V applications

**7 Conductor**



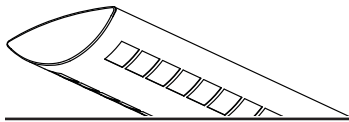
- Max. 10 amps in a 1 circuit application
- Max. 5 amps per circuit in a multi-circuit application
- Good for 3 circuit feeds or 2 circuit feeds with a battery pack hot lead
- 120V or 277V applications

**Job Information**

**Type:**

**Lightolier** a Genlyte Company [www.lightolier.com](http://www.lightolier.com)  
 631 Airport Road, Fall River, MA 02720 • (508) 679-8131 • Fax (508) 674-4710  
 We reserve the right to change details of design, materials and finish.  
 © 2005 Genlyte Group LLC • 0205 Rev.1

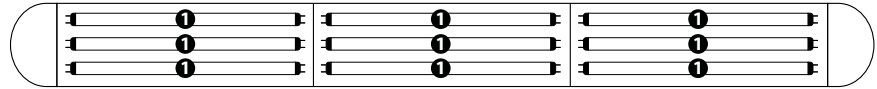
**LIGHTOLIER**<sup>®</sup>



## Wiring Options: 1 Circuit

### 1 Circuit

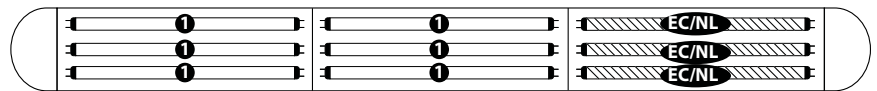
- Type 1:** 1cct.
- Type 8:** 1cct. w/1cct. thru wire
- Type H:** 1cct. w/2cct. thru wire
- Type 7:** 1cct. w/dimming



All lamps wired on one circuit.

### 1 Circuit with Emergency Circuit/Night Light (EC/NL)

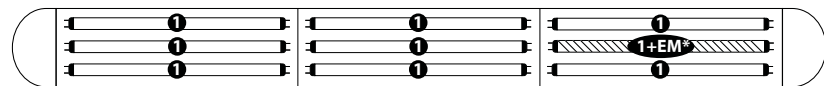
- Type 3:** 1cct. w/EC/NL



One 4' section in a one circuit fixture to be wired on a separate thru circuit. Leads for both normal circuit and EC/NL circuit wired to fixture ends. All lamps in EC/NL section to be wired together.

### 1 Circuit with Emergency Battery Pack (EM)

- Type 5:** Chloride standard C700A
- Type M:** Bodine standard B70A
- Type E:** Chloride high performance C1400
- Type P:** Bodine high performance B50

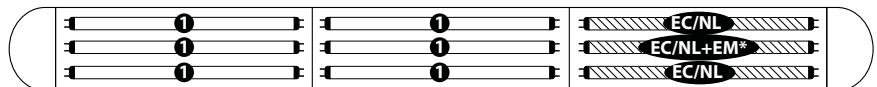


All lamps wired on one circuit, plus a battery pack is wired to one lamp. A hot lead is connected to the battery pack and would function as a 'trigger' wire when connected to a constant hot by installer. Leads for both normal circuit and battery pack are wired to fixture ends.

*\*Note: Multi-lamp battery packs are also available.*

### 1 Circuit with Emergency Circuit/Night Light and Emergency Battery Pack

- Type J:** Chloride standard C700A



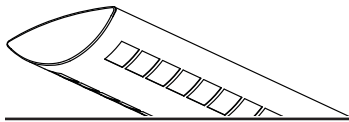
One 4' section in a one circuit fixture to be wired on a separate thru circuit, in addition, a battery pack is wired to one lamp. Installer can connect 'trigger' wire to EC hot lead if controlled together or wire separately if controlled independently. Leads for normal circuit, EC/NL and EM wired to fixture ends. All lamps in EC/NL section to be wired together.

*\*Note: Multi-lamp battery packs are also available.*

#### Job Information

#### Type:

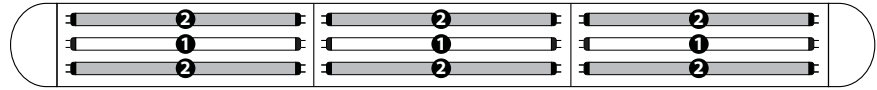
Lightolier a Genlyte Company [www.lightolier.com](http://www.lightolier.com)  
 631 Airport Road, Fall River, MA 02720 • (508) 679-8131 • Fax (508) 674-4710  
 We reserve the right to change details of design, materials and finish.  
 © 2005 Genlyte Group LLC • 0205 Rev.1



## Wiring Options: 2 Circuit Center/Outer Switching

### 2 Circuit Center/Outer Switching

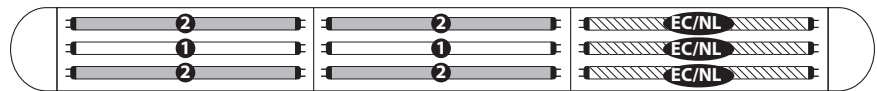
- Type 2:** 2cct.
- Type 9:** 2cct. w/1cct. thru wire
- Type I:** 2cct. w/2cct. thru wire



Fixture wired for two circuit. Lamps wired for center/outer switching.

### 2 Circuit Center/Outer Switching with Emergency Circuit/Night Light (EC/NL)

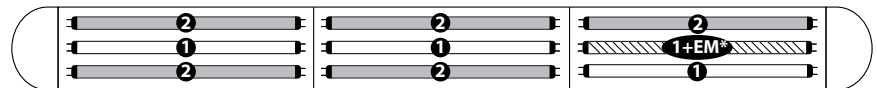
- Type 4:** 2cct. w/EC/NL



One 4' section in two circuit fixture (center/outer switching) to be wired on a separate thru circuit. Leads for both normal circuit and EC/NL circuit wired to fixture ends. All lamps in EC/NL section to be wired together.

### 2 Circuit Center/Outer Switching with Emergency Battery Pack (EM)

- Type 6:** Chloride standard C700A
- Type N:** Bodine standard B70A
- Type F:** Chloride high performance C1400
- Type Q:** Bodine high performance B50



Fixture wired for two circuits (center/outer switching), plus a battery pack is wired to one lamp. A hot lead is connected to the battery pack and would act as a 'trigger' wire when connected to a constant hot by installer. Leads for both normal circuit and battery pack are wired to fixture ends.

*\*Note: Multi-lamp battery packs are also available.*

### 2 Circuit Center/Outer Switching with Emergency Circuit/Night Light and Emergency Battery Pack

- Type K:** Chloride standard C700A



One 4' section in a two circuit fixture (center/outer switching) to be wired on a separate thru circuit, in addition, a battery pack is wired to one lamp. Installer can connect 'trigger' wire to EC hot lead if controlled together or wired separately if controlled independently. Leads for normal circuit, EC/NL and battery pack are wired to fixture ends. All lamps in EC/NL section to be wired together.

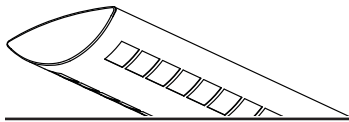
*\*Note: Multi-lamp battery packs are also available.*

#### Job Information

#### Type:

**Lightolier** a Genlyte Company [www.lightolier.com](http://www.lightolier.com)  
 631 Airport Road, Fall River, MA 02720 • (508) 679-8131 • Fax (508) 674-4710  
 We reserve the right to change details of design, materials and finish.  
 © 2005 Genlyte Group LLC • 0205 Rev.1

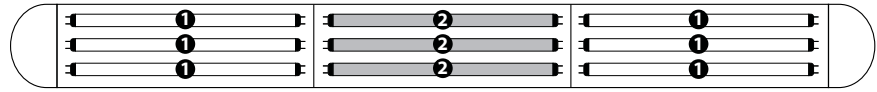
# LIGHTOLIER®



## Wiring Options: 2 Circuit A/B Switching (alternate 4' sections)

### 2 Circuit A/B Switching (alternate 4' sections)

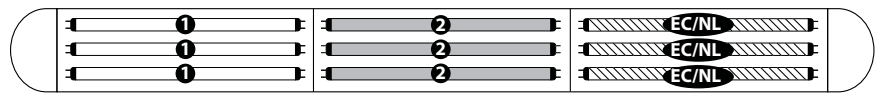
- Type B:** 2cct.
- Type A:** 2cct. w/1cct. thru wire
- Type S:** 2cct. w/2cct. thru wire



Fixture wired for two circuit. Lamps wired for A/B switching in alternate 4' sections.

### 2 Circuit A/B Switching (alternate 4' sections) with Emergency Circuit/Night Light (EC/NL)

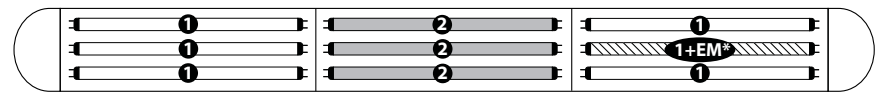
- Type C:** 2cct. w/EC/NL



One 4' section in a two circuit fixture (A/B switching) to be wired on a separate thru circuit. Leads for both normal circuit and EC/NL circuit wired to fixture ends. All lamps in EC/NL section to be wired together.

### 2 Circuit A/B Switching (alternate 4' sections) with Emergency Battery Pack (EM)

- Type D:** Chloride standard  
C700A
- Type O:** Bodine standard  
B70A
- Type G:** Chloride high performance  
C1400
- Type R:** Bodine high performance  
B50

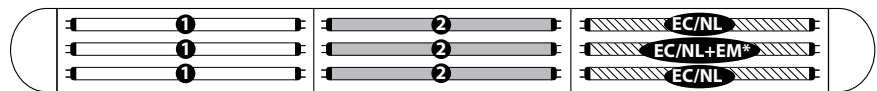


Fixture wired for two circuits (A/B switching), plus a battery pack is wired to one lamp. A hot lead is connected to the battery pack and would act as a 'trigger' wire when connected to a constant hot by installer. Leads for both normal circuit and battery pack are wired to fixture ends.

*\*Note: Multi-lamp battery packs are also available.*

### 2 Circuit A/B Switching (alternate 4' sections) with Emergency Circuit/Night Light and Emergency Battery Pack

- Type L:** Chloride standard  
C700A



One 4' section in a two circuit fixture (A/B switching) to be wired on a separate thru circuit, in addition, a battery pack is wired to one lamp. Installer can connect 'trigger' wire to EC hot lead if controlled together or wired separately if controlled independently. Leads for normal circuit, EC/NL circuit and battery pack are wired to fixture ends. All lamps in EC/NL section to be wired together.

*\*Note: Multi-lamp battery packs are also available.*

#### Job Information

#### Type:

Lightolier a Genlyte Company [www.lightolier.com](http://www.lightolier.com)  
 631 Airport Road, Fall River, MA 02720 • (508) 679-8131 • Fax (508) 674-4710  
 We reserve the right to change details of design, materials and finish.  
 © 2005 Genlyte Group LLC • 0205 Rev.1