

Ordering Information

| Family | Distribution | Lamp Type | No. of Lamps | Housing | Module Length | Wiring | Voltage | Ballast | Finish |
|------------|--------------------------|--------------------|---------------------------|-------------------------|---|--|------------------------------------|---|--|
| BSL | 3 3 = Indirect | T T = T8 | 03 03 = 3 Light | EN EN = Solid | 04 = 4' 08 = 8' 12 = 12' | 1 = 1cct. 2 = 2cct. 3 = 1cct. w/EC/NL 4 = 2cct. w/EC/NL 5 = 1cct. w/EM Battery 6 = 2cct. w/EM Battery 7 = 1cct. w/Dimming 8 = 1cct. w/1cct. Thru wire 9 = 2cct. w/1cct. Thru wire Note: Please consult wiring section of spec sheets for more wiring options. | 1 = 120V 2 = 277V | E = Standard <20% THD F = Standard <20% THD w/fusing G = <10% THD, Instant Start H = <10% THD, Instant Start w/fusing J = <10% THD, Program Start K = <10% THD, Program Start w/fusing | C = Custom Color W = Standard White |

Specifications

Features

- Housing: die-formed 20ga. cold rolled steel
- End Set: die-cast metal with baked powder coat finish
- Lamping: three T8 lamps
- Configuration: 4', 8' and 12' module lengths or continuous rows
- Ballasts: electronic 120V or 277V

Finish

High-quality white powder coat with textured matte finish. Custom colors available. Consult factory.

Mounting

Aircraft cable gripper is tamper-resistant and provides infinite vertical adjustment capability. Aircraft cable, crimp and cable gripper independently tested to meet stringent safety requirements.

Electrical

All luminaires are factory pre-wired to module ends with quick-wire connectors.

Joints & Intersections

Self-aligning joining system with hands-free pre-joining wire access.

Labels

UL, CSA standards.

Ordering Instructions

Individual Fixtures

- Determine the number of individual modules required
- Order one end set per module
- Order one non-power mount per module
- Order one power mount per module

Continuous Rows*

- Determine run length
- Order the appropriate number and length of modules for complete run
- Order one end set for each run
- Order one non-power mount for each module
- Order one power mount per run
- Order one joiner per module minus one (e.g. 3 modules requires 2 joiners)

***Note:** Some runs may require additional power mounts. Please see the 'Run Configuration' table on next page for more details.

Job Information

Type:

Job Name:

Cat. No.:

Lamp(s):

Notes:

Lightolier a Genlyte Company

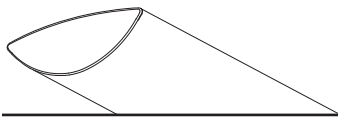
www.lightolier.com

631 Airport Road, Fall River, MA 02720 • (508) 679-8131 • Fax (508) 674-4710

We reserve the right to change details of design, materials and finish.

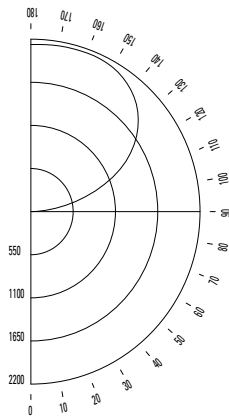
© 2005 Genlyte Group LLC • 0205 Rev.1

LIGHTOLIER



Performance

Candlepower Curve



Report No: 2101587
Lamps: F32T8
Lumens per Lamp: 2950
Efficiency: 85.7%
Up: 100.0% **Down:** 0.0%

Candlepower Summary

| ZONE DEG. | CANDLEPOWER | | | | |
|-----------|-------------|------|------|------|------|
| | 0 | 22.5 | 45 | 67.5 | 90 |
| 180 | 2131 | 2131 | 2131 | 2131 | 2131 |
| 175 | 2119 | 2122 | 2130 | 2136 | 2138 |
| 165 | 2042 | 2060 | 2105 | 2135 | 2149 |
| 155 | 1899 | 1942 | 2041 | 2117 | 2146 |
| 145 | 1692 | 1771 | 1942 | 2048 | 2086 |
| 135 | 1430 | 1566 | 1784 | 1899 | 1940 |
| 125 | 1119 | 1325 | 1555 | 1634 | 1678 |
| 115 | 776 | 1026 | 1220 | 1243 | 1281 |
| 105 | 413 | 632 | 751 | 695 | 734 |
| 95 | 93 | 128 | 202 | 152 | 193 |
| 90 | 3 | 3 | 15 | 4 | 13 |
| 85 | 0 | 0 | 0 | 0 | 0 |
| 75 | 0 | 0 | 0 | 0 | 0 |
| 65 | 0 | 0 | 0 | 0 | 0 |
| 55 | 0 | 0 | 0 | 0 | 0 |
| 45 | 0 | 0 | 0 | 0 | 0 |
| 35 | 0 | 0 | 0 | 0 | 0 |
| 25 | 0 | 0 | 0 | 0 | 0 |
| 15 | 0 | 0 | 0 | 0 | 0 |
| 5 | 0 | 0 | 0 | 0 | 0 |
| 0 | 0 | 0 | 0 | 0 | 0 |

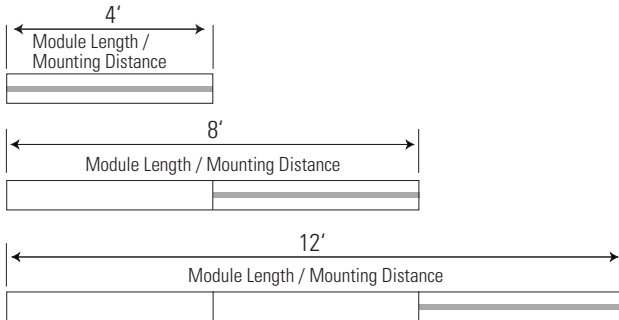
Coefficients of Utilization

| | % EFFECTIVE CEILING CAVITY REFLECTANCE | | | | | | | | |
|----|--|----|----|----|----|----|----|----|----|
| | 80 | | | 70 | | | 50 | | |
| | % WALL REFLECTANCE | | | | | | | | |
| | 50 | 30 | 10 | 50 | 30 | 10 | 50 | 30 | 10 |
| 0 | 81 | 81 | 81 | 69 | 69 | 69 | 47 | 47 | 47 |
| 1 | 70 | 67 | 65 | 60 | 58 | 56 | 41 | 40 | 38 |
| 2 | 61 | 57 | 53 | 52 | 49 | 45 | 36 | 33 | 31 |
| 3 | 54 | 48 | 43 | 46 | 41 | 38 | 31 | 29 | 26 |
| 4 | 47 | 41 | 36 | 40 | 35 | 32 | 28 | 25 | 22 |
| 5 | 42 | 35 | 31 | 36 | 31 | 27 | 24 | 21 | 19 |
| 6 | 37 | 31 | 26 | 32 | 27 | 23 | 22 | 18 | 16 |
| 7 | 33 | 27 | 23 | 28 | 23 | 20 | 20 | 16 | 14 |
| 8 | 30 | 24 | 20 | 26 | 21 | 17 | 18 | 14 | 12 |
| 9 | 27 | 21 | 17 | 23 | 18 | 15 | 16 | 13 | 10 |
| 10 | 24 | 19 | 15 | 21 | 16 | 13 | 14 | 11 | 9 |

Zonal Lumen Summary

| ZONE | LUMENS | %BARE LAMP | %LUMINAIRE |
|--------|--------|------------|------------|
| 0-90 | 0 | 0 | 0 |
| 90-180 | 7588 | 85.7 | 100.0 |
| 0-180 | 7588 | 85.7 | 100.0 |

Module Lengths & Mounting Distances



Note: Shaded area indicates locations of emergency sections (emergency wiring controls all lamps or optional battery pack controls one or two lamps).

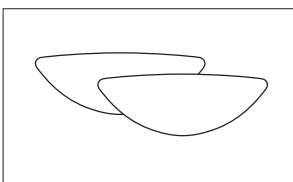
Run Configuration

| Run Length | 4' Module | 8' Module | 12' Module | Joiner | End Set | Mount | Power Mount* |
|------------|-----------|-----------|------------|--------|---------|-------|--------------|
| 4' run | 1 | | | | 1 | 1 | 1 |
| 8' run | | 1 | | | 1 | 1 | 1 |
| 12' run | | | 1 | | 1 | 1 | 1 |
| 16' run | | 2 | | 1 | 1 | 2 | 1 |
| 20' run | | 1 | 1 | 1 | 1 | 2 | 1 |
| 24' run | | | 2 | 1 | 1 | 2 | 1 |
| 28' run | | 2 | 1 | 2 | 1 | 3 | 1 |
| 32' run | | 1 | 2 | 2 | 1 | 3 | 1 |

***Note:** Additional power mounts may be required for some runs with T5 HO lamping options, longer runs, and runs with wiring options that are more complex. Please consult factory for assistance.

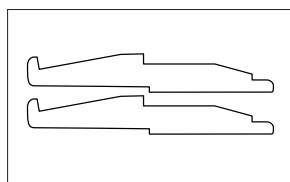
System Components & Accessories

End Set



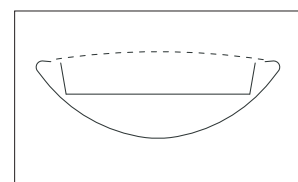
BSLESW = suspended standard white

Joiner



BSLJS = suspended joiner

Dust Cover



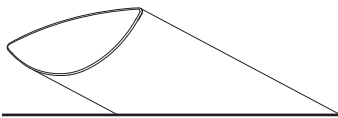
BSLDCS = 4' suspended dust cover

Job Information

Type:

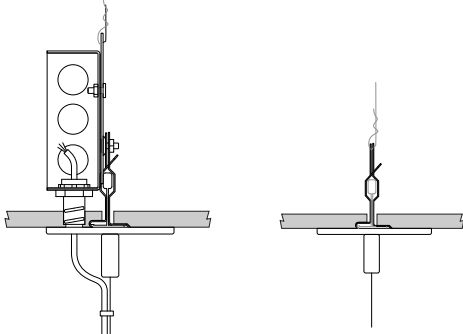
Lightolier a Genlyte Company www.lightolier.com
 631 Airport Road, Fall River, MA 02720 • (508) 679-8131 • Fax (508) 674-4710
 We reserve the right to change details of design, materials and finish.
 © 2005 Genlyte Group LLC • 0205 Rev.1

LIGHTOLIER



Mounting Options

Mount Type: T-Bar 15/16" (On-Grid)*



- 65 lbs maximum load
- Canopy: Diameter of 3 3/4" x 7/32"
- Cable: 7x7 stranded aircraft cable
- Supported by T-bar and secured to structure
- J-Box: 4" square (supplied by others)
- Fully adjustable vertically at fixture

1-Power Mount

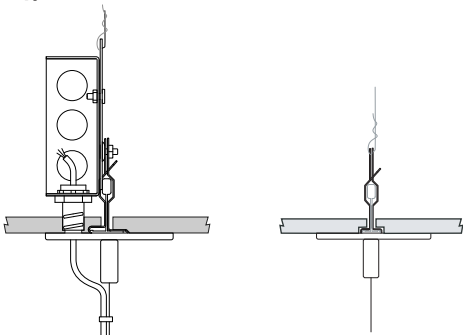
Non-Power Mount



Supension Length

| | 2' | 4' | 8' | 12' |
|-----------------|--------------------|--------------------|--------------------|--------------------|
| 1-Power Mount | | | | |
| 3 Conductor | BSLM6102P13 | BSLM6104P13 | BSLM6108P13 | BSLM6112P13 |
| 4 Conductor | BSLM6102P14 | BSLM6104P14 | BSLM6108P14 | BSLM6112P14 |
| 7 Conductor | BSLM6102P17 | BSLM6104P17 | BSLM6108P17 | BSLM6112P17 |
| Non-Power Mount | BSLM6102N | BSLM6104N | BSLM6108N | BSLM6112N |

Mount Type: T-Bar 9/16" (On-Grid)*



- 65 lbs maximum load
- Canopy: Diameter of 3 3/4" x 7/32"
- Cable: 7x7 stranded aircraft cable
- Supported by T-bar and secured to structure
- J-Box: 4" square (supplied by others)
- Fully adjustable vertically at fixture

1-Power Mount

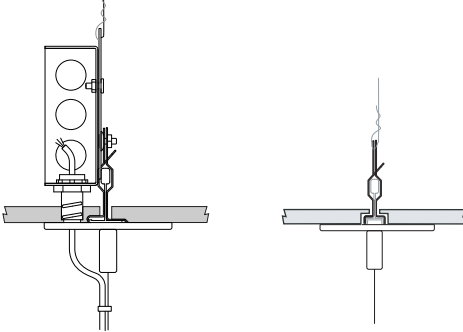
Non-Power Mount



Supension Length

| | 2' | 4' | 8' | 12' |
|-----------------|--------------------|--------------------|--------------------|--------------------|
| 1-Power Mount | | | | |
| 3 Conductor | BSLM6202P13 | BSLM6204P13 | BSLM6208P13 | BSLM6212P13 |
| 4 Conductor | BSLM6202P14 | BSLM6204P14 | BSLM6208P14 | BSLM6212P14 |
| 7 Conductor | BSLM6202P17 | BSLM6204P17 | BSLM6208P17 | BSLM6212P17 |
| Non-Power Mount | BSLM6202N | BSLM6204N | BSLM6208N | BSLM6212N |

Mount Type: T-Bar 9/16" by 5/16" Slot Grid (On-Grid)*



- 65 lbs maximum load
- Canopy: Diameter of 3 3/4" x 7/32"
- Cable: 7x7 stranded aircraft cable
- Supported by T-bar and secured to structure
- J-Box: 4" square (supplied by others)
- Fully adjustable vertically at fixture

1-Power Mount

Non-Power Mount



Supension Length

| | 2' | 4' | 8' | 12' |
|-----------------|--------------------|--------------------|--------------------|--------------------|
| 1-Power Mount | | | | |
| 3 Conductor | BSLM6302P13 | BSLM6304P13 | BSLM6308P13 | BSLM6312P13 |
| 4 Conductor | BSLM6302P14 | BSLM6304P14 | BSLM6308P14 | BSLM6312P14 |
| 7 Conductor | BSLM6302P17 | BSLM6304P17 | BSLM6308P17 | BSLM6312P17 |
| Non-Power Mount | BSLM6302N | BSLM6304N | BSLM6308N | BSLM6312N |

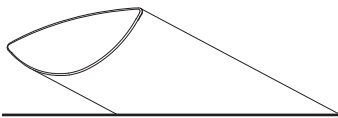
Job Information

Type:

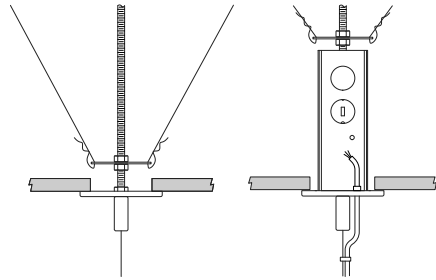
Lightolier a Genlyte Company www.lightolier.com
 631 Airport Road, Fall River, MA 02720 • (508) 679-8131 • Fax (508) 674-4710
 We reserve the right to change details of design, materials and finish.
 © 2005 Genlyte Group LLC • 0205 Rev.1

*Note: Standard T-bar mounts are currently not available for tegular tile ceilings, however certain tegular tile / T-bar combinations may be supported by the use of the slot-grid mount. For more information, please consult factory.

LIGHTOLIER



Mount Type: T-Bar Fixed Position (1/4-20 Threaded Rod)



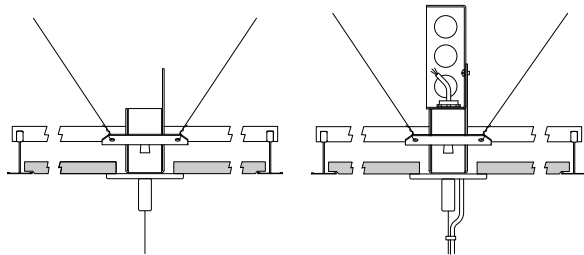
- Meets UBC, OSHPD and DSA seismic requirements
- Canopy: Diameter of 5 1/4" x 3/4" (power)
- Cable: 7x7 stranded aircraft cable
- Tile cut-out hole: Diameter of 2 1/2" (power) or 3/4" (non-power)
- J-Box: Integral J-Box supplied
- 1/4 - 20 all thread rod (supplied by others)
- Fully vertically adjustable at fixture



Supension Length

| | 2' | 4' | 8' | 12' |
|-----------------|--------------------|--------------------|--------------------|--------------------|
| 1-Power Mount | | | | |
| 3 Conductor | BSLM2102P13 | BSLM2104P13 | BSLM2108P13 | BSLM2112P13 |
| 4 Conductor | BSLM2102P14 | BSLM2104P14 | BSLM2108P14 | BSLM2112P14 |
| 2-Power Mount | | | | |
| 3 Conductor | BSLM2102P23 | BSLM2104P23 | BSLM2108P23 | BSLM2112P23 |
| Non-Power Mount | BSLM2102N | BSLM2104N | BSLM2108N | BSLM2112N |

Mount Type: T-Bar Variable Position



- Meets UBC, OSHPD and DSA seismic requirements
- Canopy: Diameter of 3" x 7/32"
- Cable: 7x7 stranded aircraft cable
- Tile cut-out hole: Diameter of 2 1/4"
- Aligned by T-bar and secured to structure
- J-Box 4" square (supplied by others)
- Fully vertically adjustable at fixture
- Adjusts to both 1" and 1 1/2" high T-bar systems

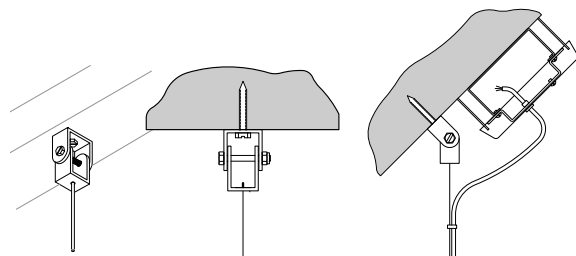


Supension Length

| | 2' | 4' | 8' | 12' |
|-----------------|--------------------|--------------------|--------------------|--------------------|
| 1-Power Mount | | | | |
| 3 Conductor | BSLM5102P13 | BSLM5104P13 | BSLM5108P13 | BSLM5112P13 |
| 4 Conductor | BSLM5102P14 | BSLM5104P14 | BSLM5108P14 | BSLM5112P14 |
| 7 Conductor | BSLM5102P17 | BSLM5104P17 | BSLM5108P17 | BSLM5112P17 |
| 2-Power Mount | | | | |
| 3 Conductor | BSLM5102P23 | BSLM5104P23 | BSLM5108P23 | BSLM5112P23 |
| Non-Power Mount | BSLM5102N | BSLM5104N | BSLM5108N | BSLM5112N |

***Note:** Supports 15/16", 9/16" and slot grid ceiling types.

Mount Type: Support or Open-Joist Ceiling



- Meets UBC, OSHPD and DSA seismic requirements
- Canopy: Diameter of 5 1/4" x 3/4" (power)
- Cable: 7x7 stranded aircraft cable
- Versatile mount, fully adjustable to accomodate open sloped ceilings
- J-Box: 4" octogonal box (supplied by others)
- Fully vertically adjustable at fixture



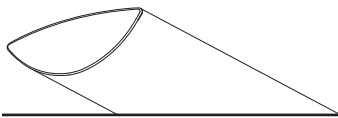
Supension Length

| | 2' | 4' | 8' | 12' |
|-----------------|--------------------|--------------------|--------------------|--------------------|
| 1-Power Mount | | | | |
| 3 Conductor | BSLM3102P13 | BSLM3104P13 | BSLM3108P13 | BSLM3112P13 |
| 4 Conductor | BSLM3102P14 | BSLM3104P14 | BSLM3108P14 | BSLM3112P14 |
| 7 Conductor | BSLM3102P17 | BSLM3104P17 | BSLM3108P17 | BSLM3112P17 |
| 2-Power Mount | | | | |
| 3 Conductor | BSLM3102P23 | BSLM3104P23 | BSLM3108P23 | BSLM3112P23 |
| Non-Power Mount | BSLM3102N | BSLM3104N | BSLM3108N | BSLM3112N |

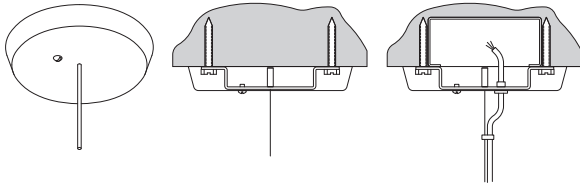
Job Information **Type:**

Lightolier a Genlyte Company www.lightolier.com
 631 Airport Road, Fall River, MA 02720 • (508) 679-8131 • Fax (508) 674-4710
 We reserve the right to change details of design, materials and finish.
 © 2005 Genlyte Group LLC • 0205 Rev.1

LIGHTOLIER



Mount Type: Non-Accessible Ceilings (concrete, gypsum etc.)



- Meets UBC, OSHPD and DSA seismic requirements
- Canopy: Diameter of 5 1/4" x 3/4" (power)
- Cable: 7x7 stranded aircraft cable
- Mountable on 0° - 15° sloped ceiling
- Optional Chicago Plenum approved version available (A4)
- J-Box: 4" octagonal box (supplied by others)
- Fully vertically adjustable at fixture

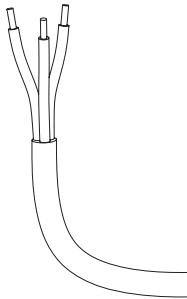


Supension Length

| | 2' | 4' | 8' | 12' |
|-----------------|--------------------|--------------------|--------------------|--------------------|
| 1-Power Mount | | | | |
| 3 Conductor | BSLM1102P13 | BSLM1104P13 | BSLM1108P13 | BSLM1112P13 |
| 4 Conductor | BSLM1102P14 | BSLM1104P14 | BSLM1108P14 | BSLM1112P14 |
| 7 Conductor | BSLM1102P17 | BSLM1104P17 | BSLM1108P17 | BSLM1112P17 |
| 2-Power Mount | | | | |
| 3 Conductor | BSLM1102P23 | BSLM1104P23 | BSLM1108P23 | BSLM1112P23 |
| Non-Power Mount | BSLM1102N | BSLM1104N | BSLM1108N | BSLM1112N |

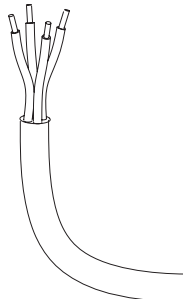
Cord Types

3 Conductor



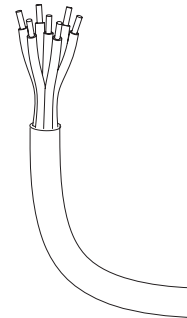
- Max. 10 amps
- Max. 300V

4 Conductor



- Max. 10 amps in a 1 circuit application
- Max. 5 amps per circuit in a 2 circuit application
- Max. 300V
- Good for 2 circuit feeds or a 1 circuit feed with a battery pack hot lead
- 120V or 277V applications

7 Conductor



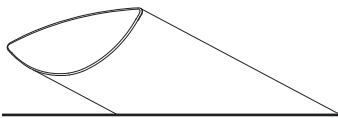
- Max. 10 amps in a 1 circuit application
- Max. 5 amps per circuit in a multi-circuit application
- Good for 3 circuit feeds or 2 circuit feeds with a battery pack hot lead
- 120V or 277V applications

Job Information

Type:

Lightolier a Genlyte Company www.lightolier.com
 631 Airport Road, Fall River, MA 02720 • (508) 679-8131 • Fax (508) 674-4710
 We reserve the right to change details of design, materials and finish.
 © 2005 Genlyte Group LLC • 0205 Rev.1

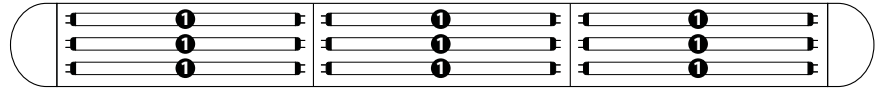
LIGHTOLIER[®]



Wiring Options: 1 Circuit

1 Circuit

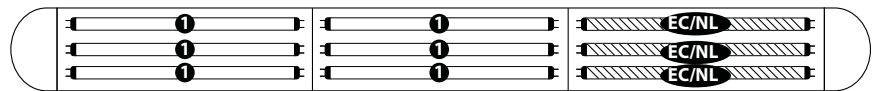
- Type 1:** 1cct.
- Type 8:** 1cct. w/1cct. thru wire
- Type H:** 1cct. w/2cct. thru wire
- Type 7:** 1cct. w/dimming



All lamps wired on one circuit.

1 Circuit with Emergency Circuit/Night Light (EC/NL)

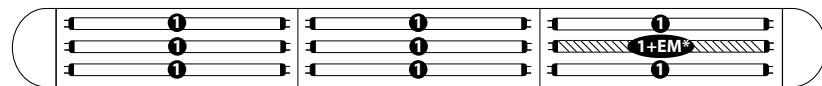
- Type 3:** 1cct. w/EC/NL



One 4' section in a one circuit fixture to be wired on a separate thru circuit. Leads for both normal circuit and EC/NL circuit wired to fixture ends. All lamps in EC/NL section to be wired together.

1 Circuit with Emergency Battery Pack (EM)

- Type 5:** Chloride standard C700A
- Type M:** Bodine standard B70A
- Type E:** Chloride high performance C1400
- Type P:** Bodine high performance B50

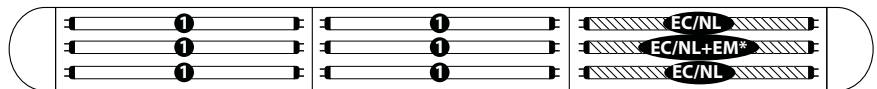


All lamps wired on one circuit, plus a battery pack is wired to one lamp. A hot lead is connected to the battery pack and would function as a 'trigger' wire when connected to a constant hot by installer. Leads for both normal circuit and battery pack are wired to fixture ends.

**Note: Multi-lamp battery packs are also available.*

1 Circuit with Emergency Circuit/Night Light and Emergency Battery Pack

- Type J:** Chloride standard C700A



One 4' section in a one circuit fixture to be wired on a separate thru circuit, in addition, a battery pack is wired to one lamp. Installer can connect 'trigger' wire to EC hot lead if controlled together or wire separately if controlled independently. Leads for normal circuit, EC/NL and EM wired to fixture ends. All lamps in EC/NL section to be wired together.

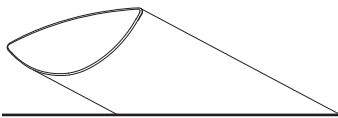
**Note: Multi-lamp battery packs are also available.*

Job Information

Type:

Lightolier a Genlyte Company www.lightolier.com
 631 Airport Road, Fall River, MA 02720 • (508) 679-8131 • Fax (508) 674-4710
 We reserve the right to change details of design, materials and finish.
 © 2005 Genlyte Group LLC • 0205 Rev.1

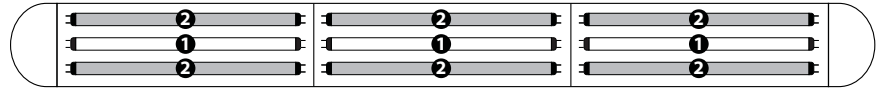
LIGHTOLIER®



Wiring Options: 2 Circuit Center/Outer Switching

2 Circuit Center/Outer Switching

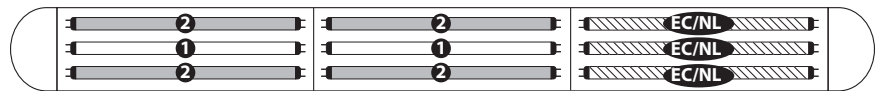
- Type 2:** 2cct.
- Type 9:** 2cct. w/1cct. thru wire
- Type I:** 2cct. w/2cct. thru wire



Fixture wired for two circuit. Lamps wired for center/outer switching.

2 Circuit Center/Outer Switching with Emergency Circuit/Night Light (EC/NL)

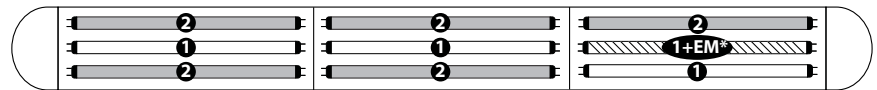
- Type 4:** 2cct. w/EC/NL



One 4' section in two circuit fixture (center/outer switching) to be wired on a separate thru circuit. Leads for both normal circuit and EC/NL circuit wired to fixture ends. All lamps in EC/NL section to be wired together.

2 Circuit Center/Outer Switching with Emergency Battery Pack (EM)

- Type 6:** Chloride standard C700A
- Type N:** Bodine standard B70A
- Type F:** Chloride high performance C1400
- Type Q:** Bodine high performance B50

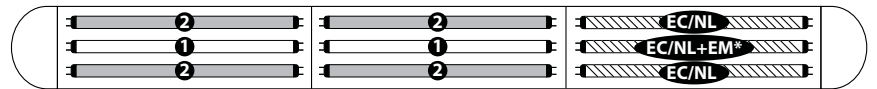


Fixture wired for two circuits (center/outer switching), plus a battery pack is wired to one lamp. A hot lead is connected to the battery pack and would act as a 'trigger' wire when connected to a constant hot by installer. Leads for both normal circuit and battery pack are wired to fixture ends.

**Note: Multi-lamp battery packs are also available.*

2 Circuit Center/Outer Switching with Emergency Circuit/Night Light and Emergency Battery Pack

- Type K:** Chloride standard C700A



One 4' section in a two circuit fixture (center/outer switching) to be wired on a separate thru circuit, in addition, a battery pack is wired to one lamp. Installer can connect 'trigger' wire to EC hot lead if controlled together or wired separately if controlled independently. Leads for normal circuit, EC/NL and battery pack are wired to fixture ends. All lamps in EC/NL section to be wired together.

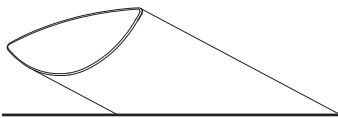
**Note: Multi-lamp battery packs are also available.*

Job Information

Type:

Lightolier a Genlyte Company www.lightolier.com
 631 Airport Road, Fall River, MA 02720 • (508) 679-8131 • Fax (508) 674-4710
 We reserve the right to change details of design, materials and finish.
 © 2005 Genlyte Group LLC • 0205 Rev.1

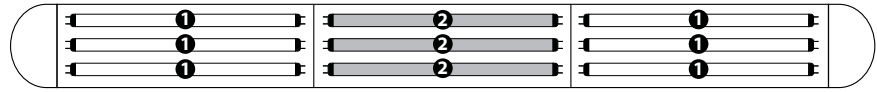
LIGHTOLIER®



Wiring Options: 2 Circuit A/B Switching (alternate 4' sections)

2 Circuit A/B Switching (alternate 4' sections)

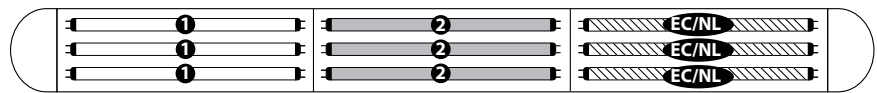
- Type B:** 2cct.
- Type A:** 2cct. w/1cct. thru wire
- Type S:** 2cct. w/2cct. thru wire



Fixture wired for two circuit. Lamps wired for A/B switching in alternate 4' sections.

2 Circuit A/B Switching (alternate 4' sections) with Emergency Circuit/Night Light (EC/NL)

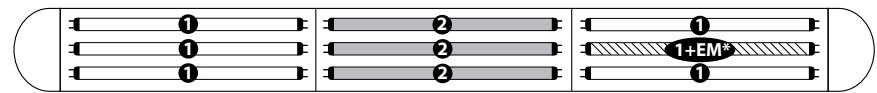
- Type C:** 2cct. w/EC/NL



One 4' section in a two circuit fixture (A/B switching) to be wired on a separate thru circuit. Leads for both normal circuit and EC/NL circuit wired to fixture ends. All lamps in EC/NL section to be wired together.

2 Circuit A/B Switching (alternate 4' sections) with Emergency Battery Pack (EM)

- Type D:** Chloride standard
C700A
- Type O:** Bodine standard
B70A
- Type G:** Chloride high performance
C1400
- Type R:** Bodine high performance
B50

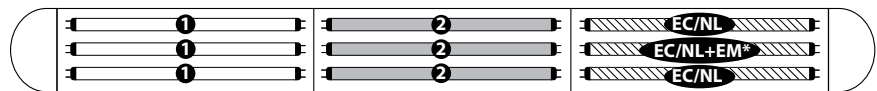


Fixture wired for two circuits (A/B switching), plus a battery pack is wired to one lamp. A hot lead is connected to the battery pack and would act as a 'trigger' wire when connected to a constant hot by installer. Leads for both normal circuit and battery pack are wired to fixture ends.

**Note: Multi-lamp battery packs are also available.*

2 Circuit A/B Switching (alternate 4' sections) with Emergency Circuit/Night Light and Emergency Battery Pack

- Type L:** Chloride standard
C700A



One 4' section in a two circuit fixture (A/B switching) to be wired on a separate thru circuit, in addition, a battery pack is wired to one lamp. Installer can connect 'trigger' wire to EC hot lead if controlled together or wired separately if controlled independently. Leads for normal circuit, EC/NL circuit and battery pack are wired to fixture ends. All lamps in EC/NL section to be wired together.

**Note: Multi-lamp battery packs are also available.*

Job Information

Type:

Lightolier a Genlyte Company www.lightolier.com
 631 Airport Road, Fall River, MA 02720 • (508) 679-8131 • Fax (508) 674-4710
 We reserve the right to change details of design, materials and finish.
 © 2005 Genlyte Group LLC • 0205 Rev.1

LIGHTOLIER®