

Ordering Information

Family	Distribution	Lamp Type	No. of Lamps	Housing	Module Length	Wiring	Voltage	Ballast	Finish
BSL	5 5 = Semi-Indirect	T T = T8	04 04 = 4 Light	LN LN = Perforated	04 = 4' 08 = 8' 12 = 12'	1 = 1cct. 2 = 2cct. 3 = 1cct. w/EC/NL 4 = 2cct. w/EC/NL 5 = 1cct. w/EM Battery 6 = 2cct. w/EM Battery 7 = 1cct. w/Dimming 8 = 1cct. w/1cct. Thru wire 9 = 2cct. w/1cct. Thru wire Note: Please consult wiring section of spec sheets for more wiring options.	1 = 120V 2 = 277V	E = Standard <20% THD F = Standard <20% THD w/fusing G = <10% THD, Instant Start H = <10% THD, Instant Start w/fusing J = <10% THD, Program Start K = <10% THD, Program Start w/fusing	C = Custom Color W = Standard White

Specifications

Features

1. Housing: die-formed 20ga. cold rolled steel
2. End Set: die-cast metal with baked powder coat finish
3. Lamping: four T8 lamps
4. Configuration: 4', 8' and 12' module lengths or continuous rows
5. Ballasts: electronic 120V or 277V

Finish

High-quality white powder coat with textured matte finish. Custom colors available. Consult factory.

Mounting

Aircraft cable gripper is tamper-resistant and provides infinite vertical adjustment capability. Aircraft cable, crimp and cable gripper independently tested to meet stringent safety requirements.

Electrical

All luminaires are factory pre-wired to module ends with quick-wire connectors.

Joints & Intersections

Self-aligning joining system with hands-free pre-joining wire access.

Labels

UL, CSA standards.

Ordering Instructions

Individual Fixtures

1. Determine the number of individual modules required
2. Order one end set per module
3. Order one non-power mount per module
4. Order one power mount per module

Continuous Rows*

1. Determine run length
2. Order the appropriate number and length of modules for complete run
3. Order one end set for each run
4. Order one non-power mount for each module
5. Order one power mount per run
6. Order one joiner per module minus one (e.g. 3 modules requires 2 joiners)

*Note: Some runs may require additional power mounts. Please see the 'Run Configuration' table on next page for more details.

Job Information

Type:

Job Name:

Cat. No.:

Lamp(s):

Notes:

Lightolier a Genlyte Company

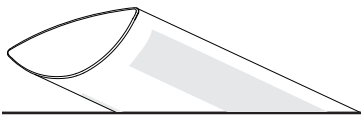
www.lightolier.com

631 Airport Road, Fall River, MA 02720 • (508) 679-8131 • Fax (508) 674-4710

We reserve the right to change details of design, materials and finish.

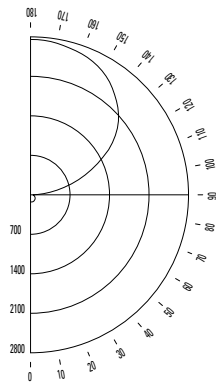
© 2005 Genlyte Group LLC • 0205 Rev.1

LIGHTOLIER



Performance

Candlepower Curve



Candlepower Summary

ZONE DEG.	CANDLEPOWER				
	0	22.5	45	67.5	90
180	2754	2754	2754	2754	2754
175	2741	2743	2747	2747	2749
165	2647	2656	2672	2682	2691
155	2469	2487	2538	2589	2607
145	2213	2243	2349	2420	2442
135	1880	1944	2081	2157	2189
125	1492	1589	1742	1816	1836
115	1061	1178	1316	1305	1312
105	592	715	750	740	752
95	137	190	221	219	231
90	4	12	29	41	48
85	9	13	26	42	48
75	17	22	41	59	67
65	23	36	58	76	84
55	38	54	75	91	99
45	61	72	88	104	111
35	84	89	103	113	119
25	104	107	116	122	126
15	118	119	122	127	129
5	126	126	126	126	127
0	127	127	127	127	127

Report No: 9900153
 Lamps: F32T8
 Lumens per Lamp: 2950
 Efficiency: 79.6%
 Up: 95.5% Down: 4.5%

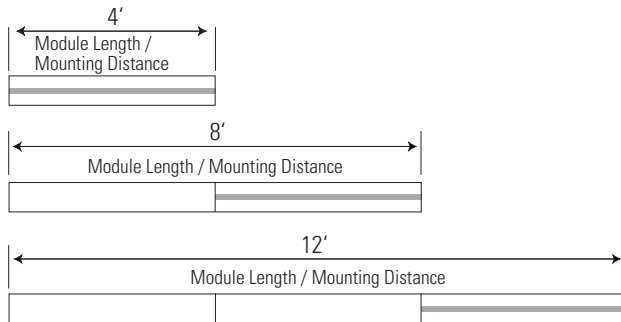
Coefficients of Utilization

	% EFFECTIVE CEILING CAVITY REFLECTANCE								
	80			70			50		
	% WALL REFLECTANCE								
	50	30	10	50	30	10	50	30	10
0	76	76	76	66	66	66	46	46	46
1	66	63	61	57	55	52	40	38	37
2	58	53	49	50	46	43	35	32	30
3	50	45	41	43	39	35	30	28	25
4	44	38	34	38	33	30	27	24	21
5	39	33	29	34	29	25	24	20	18
6	35	29	25	30	25	21	21	18	15
7	31	25	21	27	22	19	19	16	13
8	28	22	18	24	19	16	17	14	12
9	25	20	16	22	17	14	15	12	10
10	23	18	14	20	15	12	14	11	9

Zonal Lumen Summary

ZONE	LUMENS	% BARE LAMP	% LUMINAIRE
0-90	425.5	3.6	4.5
90-180	8972.5	76.0	95.5
0-180	9398	79.6	100.0

Module Lengths & Mounting Distances



Note: Shaded area indicates locations of emergency sections (emergency wiring controls all lamps or optional battery pack controls one or two lamps).

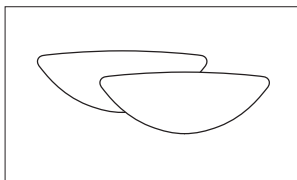
Run Configuration

Run Length	4' Module	8' Module	12' Module	Joiner	End Set	Mount	Power Mount*
4' run	1				1	1	1
8' run		1			1	1	1
12' run			1		1	1	1
16' run		2		1	1	2	1
20' run		1	1	1	1	2	1
24' run			2	1	1	2	1
28' run		2	1	2	1	3	1
32' run		1	2	2	1	3	1

***Note:** Additional power mounts may be required for some runs with T5 HO lamplung options, longer runs, and runs with wiring options that are more complex. Please consult factory for assistance.

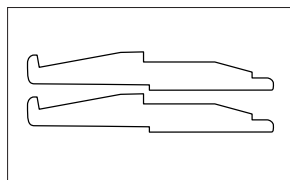
System Components & Accessories

End Set



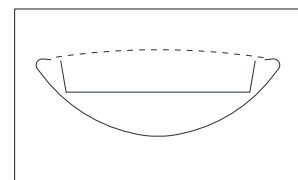
BSLESW = suspended standard white

Joiner



BSLJS = suspended joiner

Dust Cover



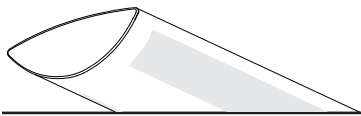
BSLDCS = 4' suspended dust cover

Job Information

Type:

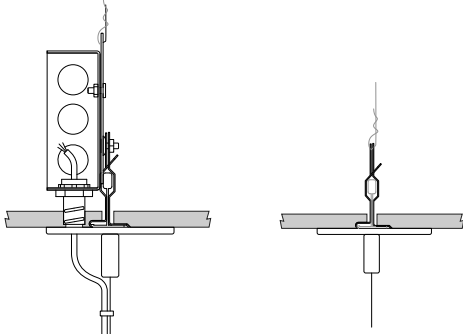
Lightolier a Genlyte Company www.lightolier.com
 631 Airport Road, Fall River, MA 02720 • (508) 679-8131 • Fax (508) 674-4710
 We reserve the right to change details of design, materials and finish.
 © 2005 Genlyte Group LLC • 0205 Rev.1

LIGHTOLIER®



Mounting Options

Mount Type: T-Bar 15/16" (On-Grid)*



- 65 lbs maximum load
- Canopy: Diameter of 3 3/4" x 7/32"
- Cable: 7x7 stranded aircraft cable
- Supported by T-bar and secured to structure
- J-Box: 4" square (supplied by others)
- Fully adjustable vertically at fixture

1-Power Mount

Non-Power Mount

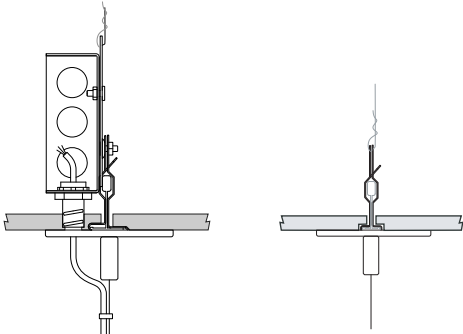


Supension Length

	2'	4'	8'	12'
1-Power Mount				
3 Conductor	BSLM6102P13	BSLM6104P13	BSLM6108P13	BSLM6112P13
4 Conductor	BSLM6102P14	BSLM6104P14	BSLM6108P14	BSLM6112P14
7 Conductor	BSLM6102P17	BSLM6104P17	BSLM6108P17	BSLM6112P17

Non-Power Mount	BSLM6102N	BSLM6104N	BSLM6108N	BSLM6112N
-----------------	------------------	------------------	------------------	------------------

Mount Type: T-Bar 9/16" (On-Grid)*



- 65 lbs maximum load
- Canopy: Diameter of 3 3/4" x 7/32"
- Cable: 7x7 stranded aircraft cable
- Supported by T-bar and secured to structure
- J-Box: 4" square (supplied by others)
- Fully adjustable vertically at fixture

1-Power Mount

Non-Power Mount

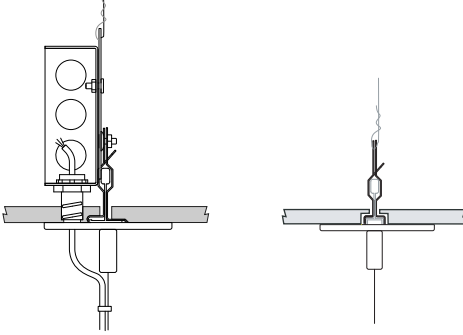


Supension Length

	2'	4'	8'	12'
1-Power Mount				
3 Conductor	BSLM6202P13	BSLM6204P13	BSLM6208P13	BSLM6212P13
4 Conductor	BSLM6202P14	BSLM6204P14	BSLM6208P14	BSLM6212P14
7 Conductor	BSLM6202P17	BSLM6204P17	BSLM6208P17	BSLM6212P17

Non-Power Mount	BSLM6202N	BSLM6204N	BSLM6208N	BSLM6212N
-----------------	------------------	------------------	------------------	------------------

Mount Type: T-Bar 9/16" by 5/16" Slot Grid (On-Grid)*



- 65 lbs maximum load
- Canopy: Diameter of 3 3/4" x 7/32"
- Cable: 7x7 stranded aircraft cable
- Supported by T-bar and secured to structure
- J-Box: 4" square (supplied by others)
- Fully adjustable vertically at fixture

1-Power Mount

Non-Power Mount



Supension Length

	2'	4'	8'	12'
1-Power Mount				
3 Conductor	BSLM6302P13	BSLM6304P13	BSLM6308P13	BSLM6312P13
4 Conductor	BSLM6302P14	BSLM6304P14	BSLM6308P14	BSLM6312P14
7 Conductor	BSLM6302P17	BSLM6304P17	BSLM6308P17	BSLM6312P17

Non-Power Mount	BSLM6302N	BSLM6304N	BSLM6308N	BSLM6312N
-----------------	------------------	------------------	------------------	------------------

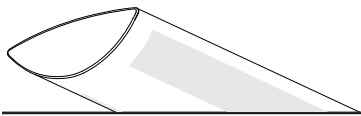
Job Information

Type:

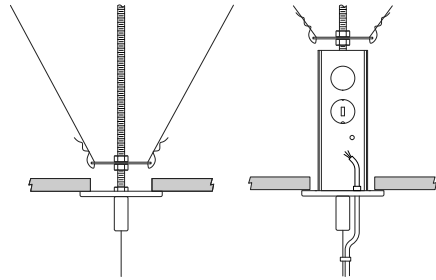
Lightolier a Genlyte Company www.lightolier.com
 631 Airport Road, Fall River, MA 02720 • (508) 679-8131 • Fax (508) 674-4710
 We reserve the right to change details of design, materials and finish.
 © 2005 Genlyte Group LLC • 0205 Rev.1

*Note: Standard T-bar mounts are currently not available for tegular tile ceilings, however certain tegular tile / T-bar combinations may be supported by the use of the slot-grid mount. For more information, please consult factory.

LIGHTOLIER



Mount Type: T-Bar Fixed Position (1/4-20 Threaded Rod)



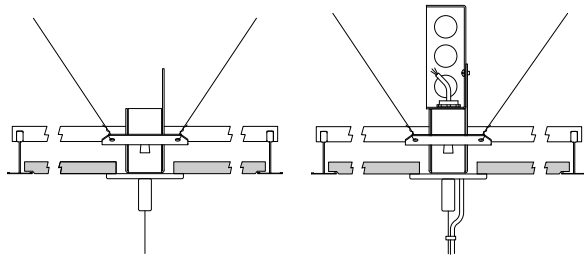
- Meets UBC, OSHPD and DSA seismic requirements
- Canopy: Diameter of 5 1/4" x 3/4" (power)
- Cable: 7x7 stranded aircraft cable
- Tile cut-out hole: Diameter of 2 1/2" (power) or 3/4" (non-power)
- J-Box: Integral J-Box supplied
- 1/4 - 20 all thread rod (supplied by others)
- Fully vertically adjustable at fixture



Supension Length

	2'	4'	8'	12'
1-Power Mount				
3 Conductor	BSLM2102P13	BSLM2104P13	BSLM2108P13	BSLM2112P13
4 Conductor	BSLM2102P14	BSLM2104P14	BSLM2108P14	BSLM2112P14
2-Power Mount				
3 Conductor	BSLM2102P23	BSLM2104P23	BSLM2108P23	BSLM2112P23
Non-Power Mount	BSLM2102N	BSLM2104N	BSLM2108N	BSLM2112N

Mount Type: T-Bar Variable Position



- Meets UBC, OSHPD and DSA seismic requirements
- Canopy: Diameter of 3" x 7/32"
- Cable: 7x7 stranded aircraft cable
- Tile cut-out hole: Diameter of 2 1/4"
- Aligned by T-bar and secured to structure
- J-Box 4" square (supplied by others)
- Fully vertically adjustable at fixture
- Adjusts to both 1" and 1 1/2" high T-bar systems

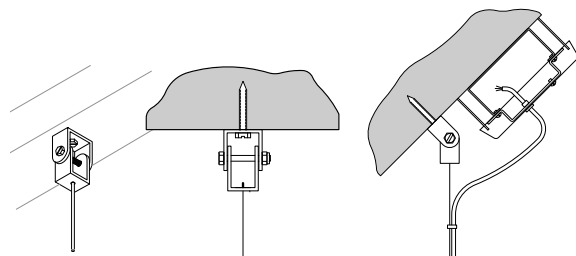


Supension Length

	2'	4'	8'	12'
1-Power Mount				
3 Conductor	BSLM5102P13	BSLM5104P13	BSLM5108P13	BSLM5112P13
4 Conductor	BSLM5102P14	BSLM5104P14	BSLM5108P14	BSLM5112P14
7 Conductor	BSLM5102P17	BSLM5104P17	BSLM5108P17	BSLM5112P17
2-Power Mount				
3 Conductor	BSLM5102P23	BSLM5104P23	BSLM5108P23	BSLM5112P23
Non-Power Mount	BSLM5102N	BSLM5104N	BSLM5108N	BSLM5112N

***Note:** Supports 15/16", 9/16" and slot grid ceiling types.

Mount Type: Support or Open-Joist Ceiling



- Meets UBC, OSHPD and DSA seismic requirements
- Canopy: Diameter of 5 1/4" x 3/4" (power)
- Cable: 7x7 stranded aircraft cable
- Versatile mount, fully adjustable to accomodate open sloped ceilings
- J-Box: 4" octogonal box (supplied by others)
- Fully vertically adjustable at fixture



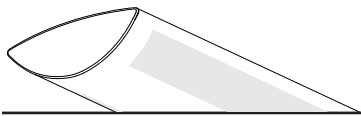
Supension Length

	2'	4'	8'	12'
1-Power Mount				
3 Conductor	BSLM3102P13	BSLM3104P13	BSLM3108P13	BSLM3112P13
4 Conductor	BSLM3102P14	BSLM3104P14	BSLM3108P14	BSLM3112P14
7 Conductor	BSLM3102P17	BSLM3104P17	BSLM3108P17	BSLM3112P17
2-Power Mount				
3 Conductor	BSLM3102P23	BSLM3104P23	BSLM3108P23	BSLM3112P23
Non-Power Mount	BSLM3102N	BSLM3104N	BSLM3108N	BSLM3112N

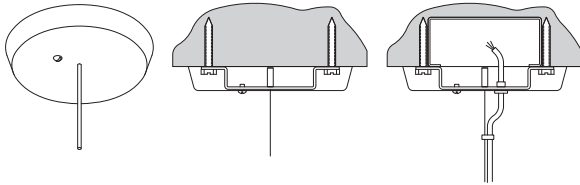
Job Information **Type:**

Lightolier a Genlyte Company www.lightolier.com
 631 Airport Road, Fall River, MA 02720 • (508) 679-8131 • Fax (508) 674-4710
 We reserve the right to change details of design, materials and finish.
 © 2005 Genlyte Group LLC • 0205 Rev.1

LIGHTOLIER®



Mount Type: Non-Accessible Ceilings (concrete, gypsum etc.)



- Meets UBC, OSHPD and DSA seismic requirements
- Canopy: Diameter of 5 1/4" x 3/4" (power)
- Cable: 7x7 stranded aircraft cable
- Mountable on 0° - 15° sloped ceiling
- Optional Chicago Plenum approved version available (A4)
- J-Box: 4" octagonal box (supplied by others)
- Fully vertically adjustable at fixture

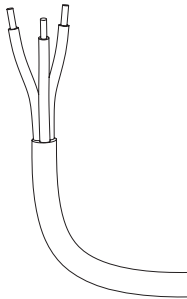


Supension Length

	2'	4'	8'	12'
1-Power Mount				
3 Conductor	BSLM1102P13	BSLM1104P13	BSLM1108P13	BSLM1112P13
4 Conductor	BSLM1102P14	BSLM1104P14	BSLM1108P14	BSLM1112P14
7 Conductor	BSLM1102P17	BSLM1104P17	BSLM1108P17	BSLM1112P17
2-Power Mount				
3 Conductor	BSLM1102P23	BSLM1104P23	BSLM1108P23	BSLM1112P23
Non-Power Mount	BSLM1102N	BSLM1104N	BSLM1108N	BSLM1112N

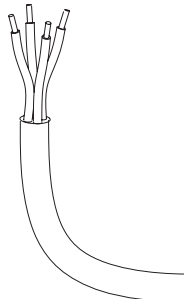
Cord Types

3 Conductor



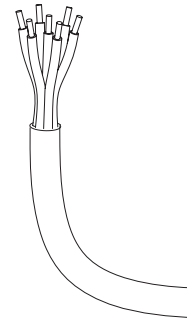
- Max. 10 amps
- Max. 300V

4 Conductor



- Max. 10 amps in a 1 circuit application
- Max. 5 amps per circuit in a 2 circuit application
- Max. 300V
- Good for 2 circuit feeds or a 1 circuit feed with a battery pack hot lead
- 120V or 277V applications

7 Conductor



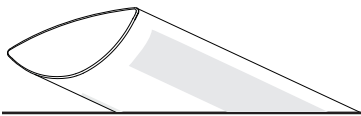
- Max. 10 amps in a 1 circuit application
- Max. 5 amps per circuit in a multi-circuit application
- Good for 3 circuit feeds or 2 circuit feeds with a battery pack hot lead
- 120V or 277V applications

Job Information

Type:

Lightolier a Genlyte Company www.lightolier.com
 631 Airport Road, Fall River, MA 02720 • (508) 679-8131 • Fax (508) 674-4710
 We reserve the right to change details of design, materials and finish.
 © 2005 Genlyte Group LLC • 0205 Rev.1

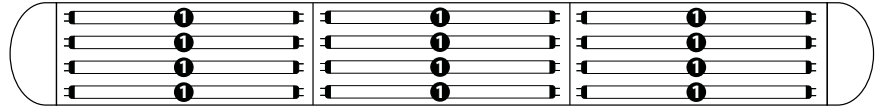
LIGHTOLIER[®]



Wiring Options: 1 Circuit

1 Circuit

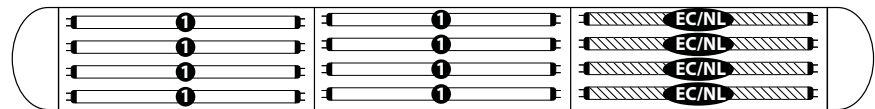
- Type 1:** 1cct.
- Type 8:** 1cct. w/1cct. thru wire
- Type H:** 1cct. w/2cct. thru wire
- Type 7:** 1cct. w/dimming



All lamps wired on one circuit.

1 Circuit with Emergency Circuit/Night Light (EC/NL)

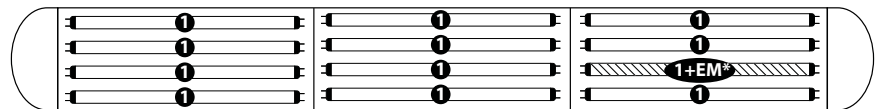
- Type 3:** 1cct. w/EC/NL



One 4' section in a one circuit fixture to be wired on a separate thru circuit. Leads for both normal circuit and EC/NL circuit wired to fixture ends. All lamps in EC/NL section to be wired together.

1 Circuit with Emergency Battery Pack (EM)

- Type 5:** Chloride standard C700A
- Type M:** Bodine standard B70A
- Type E:** Chloride high performance C1400
- Type P:** Bodine high performance B50

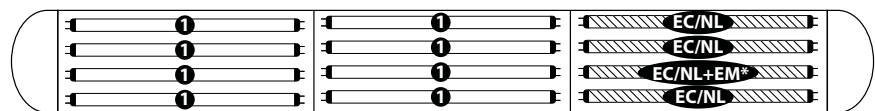


All lamps wired on one circuit, plus a battery pack is wired to one lamp. A hot lead is connected to the battery pack and would function as a 'trigger' wire when connected to a constant hot by installer. Leads for both normal circuit and battery pack are wired to fixture ends.

**Note: Multi-lamp battery packs are also available.*

1 Circuit with Emergency Circuit/Night Light and Emergency Battery Pack

- Type J:** Chloride standard C700A



One 4' section in a one circuit fixture to be wired on a separate thru circuit, in addition, a battery pack is wired to one lamp. Installer can connect 'trigger' wire to EC hot lead if controlled together or wire separately if controlled independently. Leads for normal circuit, EC/NL circuit and EM wired to fixture ends. All lamps in EC/NL section to be wired together.

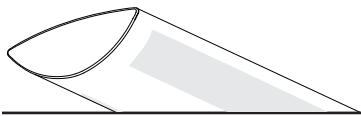
**Note: Multi-lamp battery packs are also available.*

Job Information

Type:

Lightolier a Genlyte Company www.lightolier.com
 631 Airport Road, Fall River, MA 02720 • (508) 679-8131 • Fax (508) 674-4710
 We reserve the right to change details of design, materials and finish.
 © 2005 Genlyte Group LLC • 0205 Rev.1

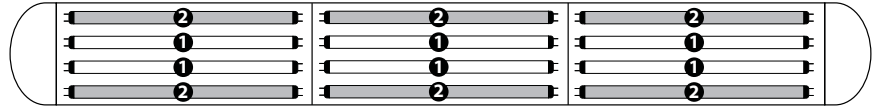
LIGHTOLIER®



Wiring Options: 2 Circuit Center/Outer Switching

2 Circuit Center/Outer Switching

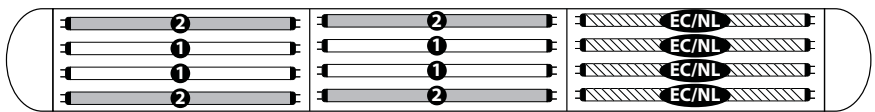
- Type 2:** 2cct.
- Type 9:** 2cct. w/1cct. thru wire
- Type I:** 2cct. w/2cct. thru wire



Fixture wired for two circuit. Lamps wired for center/outer switching.

2 Circuit Center/Outer Switching with Emergency Circuit/Night Light (EC/NL)

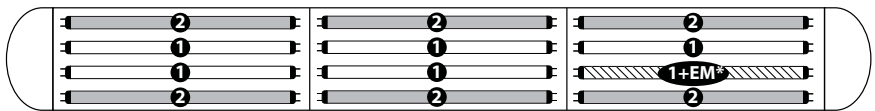
- Type 4:** 2cct. w/EC/NL



One 4' section in two circuit fixture (center/outer switching) to be wired on a separate thru circuit. Leads for both normal circuit and EC/NL circuit wired to fixture ends. All lamps in EC/NL section to be wired together.

2 Circuit Center/Outer Switching with Emergency Battery Pack (EM)

- Type 6:** Chloride standard C700A
- Type N:** Bodine standard B70A
- Type F:** Chloride high performance C1400
- Type Q:** Bodine high performance B50

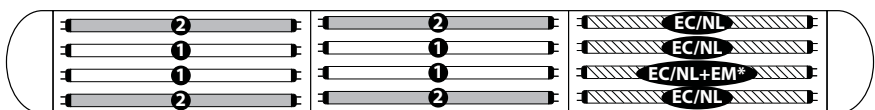


Fixture wired for two circuits (center/outer switching), plus a battery pack is wired to one lamp. A hot lead is connected to the battery pack and would act as a 'trigger' wire when connected to a constant hot by installer. Leads for both normal circuit and battery pack are wired to fixture ends.

**Note: Multi-lamp battery packs are also available.*

2 Circuit Center/Outer with Emergency Circuit/Night Light and Emergency Battery Pack

- Type K:** Chloride standard C700A

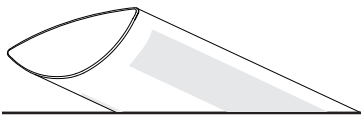


One 4' section in a two circuit fixture (center/outer switching) to be wired on a separate thru circuit, in addition, a battery pack is wired to one lamp. Installer can connect 'trigger' wire to EC hot lead if controlled together or wired separately if controlled independently. Leads for normal circuit, EC/NL circuit and battery pack are wired to fixture ends. All lamps in EC/NL section to be wired together.

**Note: Multi-lamp battery packs are also available.*

Job Information	Type:
------------------------	--------------

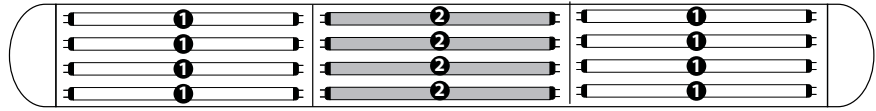
Lightolier a Genlyte Company www.lightolier.com
 631 Airport Road, Fall River, MA 02720 • (508) 679-8131 • Fax (508) 674-4710
 We reserve the right to change details of design, materials and finish.
 © 2005 Genlyte Group LLC • 0205 Rev.1



Wiring Options: 2 Circuit A/B Switching (alternate 4' sections)

2 Circuit A/B Switching (alternate 4' sections)

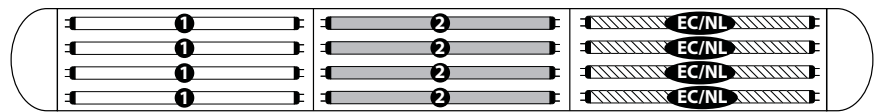
- Type B:** 2cct.
- Type A:** 2cct. w/1cct. thru wire
- Type S:** 2cct. w/2cct. thru wire



Fixture wired for two circuit. Lamps wired for A/B switching in alternate 4' sections.

2 Circuit A/B Switching (alternate 4' sections) with Emergency Circuit/Night Light (EC/NL)

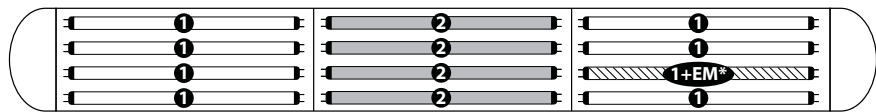
- Type C:** 2cct. w/EC/NL



One 4' section in a two circuit fixture (A/B switching) to be wired on a separate thru circuit. Leads for both normal circuit and EC/NL circuit wired to fixture ends. All lamps in EC/NL section to be wired together.

2 Circuit A/B Switching (alternate 4' sections) with Emergency Battery Pack (EM)

- Type D:** Chloride standard
C700A
- Type O:** Bodine standard
B70A
- Type G:** Chloride high performance
C1400
- Type R:** Bodine high performance
B50

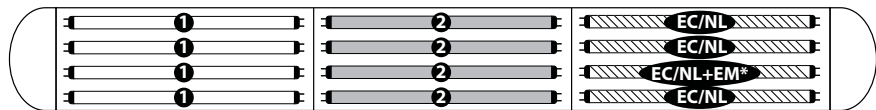


Fixture wired for two circuits (A/B switching), plus a battery pack is wired to one lamp. A hot lead is connected to the battery pack and would act as a 'trigger' wire when connected to a constant hot by installer. Leads for both normal circuit and battery pack are wired to fixture ends.

**Note: Multi-lamp battery packs are also available.*

2 Circuit A/B Switching (alternate 4' sections) with Emergency Circuit/Night Light and Emergency Battery Pack

- Type L:** Chloride standard
C700A



One 4' section in a two circuit fixture (A/B switching) to be wired on a separate thru circuit, in addition, a battery pack is wired to one lamp. Installer can connect "trigger" wire to EC hot lead if controlled together or wired separately if controlled independently. Leads for normal circuit, EC/NL circuit and battery pack are wired to fixture ends. All lamps in EC/NL section to be wired together.

**Note: Multi-lamp battery packs are also available.*

Job Information

Type:

Lightolier a Genlyte Company www.lightolier.com
 631 Airport Road, Fall River, MA 02720 • (508) 679-8131 • Fax (508) 674-4710
 We reserve the right to change details of design, materials and finish.
 © 2005 Genlyte Group LLC • 0205 Rev.1

LIGHTOLIER®