

### Module Ordering Information

Family	Series	Track	Length	Shielding	Lamps	Finish	Options
<b>A</b>	<b>2</b>	<b>A</b> A = Track B = No Track	<b>4</b> = 4-Foot <b>8</b> = 8-Foot <b>12</b> = 12-Foot	<b>D</b> A = Solid B = Perf C = Pierce D = Lens	<b>28</b> = 28w <b>54</b> = 54w	<b>WH</b> = White <b>AL</b> = Aluminum	<b>E1</b> = Emergency Pack, 120v <b>E2</b> = Emergency Pack, 277v <b>D1</b> = Dimming 120v <b>D2</b> = Dimming 277v <b>X5</b> = 5 Through Wires

Complete ordering instructions below.

### Features

- Housing:** Extruded aluminum housing in lengths of 4' (121.92cm), 8' (243.84cm) and 12' (365.76cm). There are no exposed fasteners. The end caps are die-cast aluminum sculpted and finished to match the housing.
- Reflectors:** Extruded aluminum brite dipped anodized, kick reflector and die-formed high purity anodized specular aluminum.
- Lamping:** One T5 28W or 54W lamp per four-foot nominal length. Provided by others.
- Alignment Mechanism:** The housing and the end cap each have a draw tight mechanism that creates a hairline joint along and at the ends of the run. To operate the mechanism, the installer tightens two screws.
- Track Option:** The housing has the capability of having single circuit Lytespan® track fixtures for accent lighting. The track is an integral component of the housing. The fixture housing comes with a cover to conceal any portion of the track that doesn't have a track fixture installed. The cover can be cut to length in the field. There is an optional cover (**ATC**) that creates a nearly seamless transition from the fluorescent fixture to the track fixture.
- Shielding:** Extruded acrylic lens. 26% opaque. Textured white finish.

### Labels

UL, cUL and I.B.E.W.

### Finish

Powder coated baked white or silver enamel.  
Custom colors available, consult factory.

### Mountings

All mounting is on 48" (121.92cm), 96" (243.84cm) and 144" (365.76cm) centers.  
**Cable Suspension** (not shown) 4-1/2" (11.43cm) diameter flat canopy finished white enamel, 1/16" (0.16cm) diameter stainless steel aircraft cable adjustable up to 36" (91.44cm) and adjustable cable gripper. Cable mounting at the ends of a run is not available when track is being used. Installing stems at the ends of the run will prevent the fixture from hanging off center caused by the weight of the track fixture. Cable suspension can be used in the center of runs that have track installed. Consult factory for other options.  
**Stem Mounting** (not shown) - 4-1/2" (11.43cm) diameter flat canopy, 1/4" (0.64cm) IP (1/2" (1.27cm) OD) stem. The stem can accommodate up to 2-12 gauge and 3-18 gauge solid wires. All components have a white finish.

### Electrical

Ballast is <10% THD, 1.0 ballast factor, program start. Color-coded quick connectors allow ease of connection for joiner modules. For special circuiting consult factory. Factory installed ballast disconnect allows the ballast to be disconnected from and reconnected to incoming power under load without turning the entire circuit off.  
**Dimming:** 120/277 VAC 1% dimming level, 4 or 5 wire feed required.  
**Emergency Battery Pack:** 28 watt: 520 lumens @ 90 minutes, 54 watt: 700 lumens @ 90 minutes.  
 There are two types of power feed end sets for the track option. One has a stem containing five solid wires and the other end set has one 5 wire and one 3 wire stem. Single power feed end sets allow for 16 amps of track fixtures per run while dual power feed end sets allow 32 amps per run.

### Ordering Instructions

#### Individual Fixtures:

- Order number of MODULES required.
- Order one POWER FEED END SET per MODULE.

#### Continuous Rows:

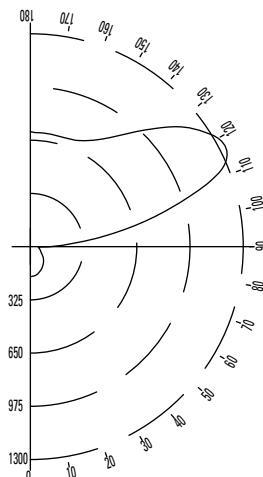
- Determine run length.
- Order the appropriate number of MODULES for the complete run.
- Order one POWER FEED END SET per run.
- Order one INTERMEDIATE SUSPENSION per MODULE minus one per run.
- For runs that exceed amperage limits, order the appropriate number of INTERMEDIATE POWER FEEDS.

Job Information	Type:
<b>Job Name:</b>	
<b>Cat. No.:</b>	
<b>Lamp(s):</b>	
<b>Notes:</b>	

631 Airport Road, Fall River, MA 02720 • (508) 679-8131 • Fax (508) 674-4710  
 We reserve the right to change details of design, materials and finish.  
 www.lightolier.com © 2008 Philips Group • C0908

### Performance

#### CANDLEPOWER CURVE



REPORT NO: ITL50922  
 CAT NO: A2X4D54  
 LAMPS: 1- F54T5  
 LUMENS: 5000  
 EFFICIENCY: 92.1%

ZONE DEG.	CANDLEPOWER				
	0	22	45	67	90
180	702	702	702	702	702
175	704	704	700	697	698
165	679	684	688	693	697
155	632	642	664	695	715
145	559	584	653	755	810
135	469	513	690	901	1010
125	363	452	792	1121	1245
115	242	424	900	1230	1326
105	123	434	806	878	865
95	23	236	269	315	293
90	2	50	116	63	132
85	8	42	50	47	49
75	35	39	48	57	60
65	67	65	62	68	70
55	98	95	90	93	90
45	125	122	115	117	114
35	148	147	139	139	135
25	166	166	160	159	155
15	178	178	176	175	172
5	185	185	183	182	181
0	184	184	184	184	184

#### COEFFICIENTS OF UTILIZATION % EFFECTIVE CEILING CAVITY REFLECTANCE

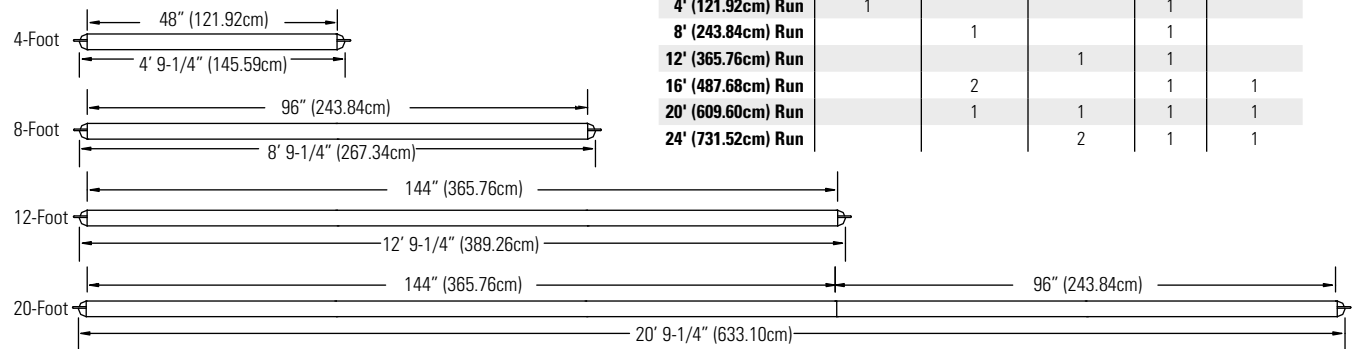
ROOM CAVITY RATIO	WALL REFLECTANCE								
	80			70			50		
	70	50	30	70	50	30	50	30	10
0	90	90	90	79	79	79	57	57	57
1	82	78	75	71	68	65	50	48	46
2	74	68	63	65	59	55	43	40	38
3	68	60	53	59	52	47	38	35	32
4	62	52	46	54	46	40	34	30	27
5	57	47	39	49	41	35	30	26	23
6	52	41	34	45	36	30	27	23	20
7	48	37	30	42	33	27	24	20	18
8	44	34	27	38	29	24	22	18	15
9	41	30	24	36	27	21	20	16	13
10	38	28	21	33	24	19	18	14	12

#### 20% FLOOR CAVITY REFLECTANCE

#### DISTRIBUTION

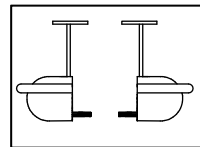
Zone	Lumens	% Lamp	% Luminaire
0-90	568	11.4	12.3
90-180	4038	80.8	87.7
0-180	4606	92.1	100.0

### Fixture Lengths and Mounting Locations

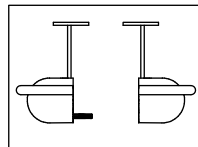


	4' (121.92cm) Module	8' (243.84cm) Module	12' (365.76cm) Module	End Set	Suspension
4' (121.92cm) Run	1			1	
8' (243.84cm) Run		1		1	
12' (365.76cm) Run			1	1	
16' (487.68cm) Run		2		1	1
20' (609.60cm) Run		1	1	1	1
24' (731.52cm) Run			2	1	1

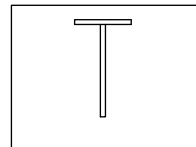
### Mounting Accessories



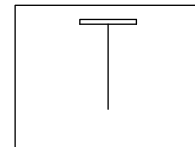
**A2TES24ALD** = Aluminum  
**A2TES24WHD** = White  
 Dual Power Feed End Set  
 5 Wires (2-12 ga., 3-18ga.) on One End  
 3 Wires (2-12 ga., 1-18ga.) on One End  
 24" (60.96cm) Stems for Track



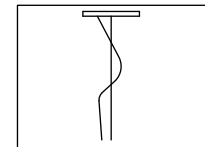
**A2TES24ALS** = Aluminum  
**A2TES24WHS** = White  
 Single Power Feed End Set  
 5 Wires (2-12 ga., 3-18ga.) on One End  
 24" (60.96cm) Stems for Track



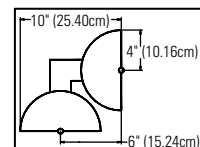
**ALS24**  
 Intermediate  
 24" (60.96cm) White Stem Set



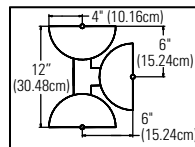
**AC36**  
 Intermediate  
 36" (91.44cm) Cable Set



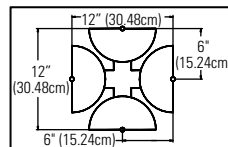
**ACC36X4**  
 Intermediate 36" (91.44cm)  
 Cable & 4 Wire 18 ga.  
 Cord Set for Fluorescent Only



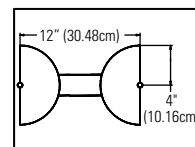
**A2LAL** = Aluminum  
**A2LWH** = White  
 "L" Joiner Block



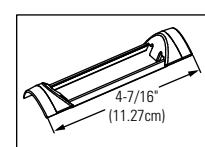
**A2TAL** = Aluminum  
**A2TWH** = White  
 "T" Joiner Block



**A2XAL** = Aluminum  
**A2XWH** = White  
 "X" Joiner Block



**A2L1AL** = Aluminum  
**A2L1WH** = White  
 Inline Joiner Block



**ATCAL** = Aluminum  
**ATCWH** = White  
 Track Adapter

### Job Information Type:

631 Airport Road, Fall River, MA 02720 • (508) 679-8131 • Fax (508) 674-4710  
 We reserve the right to change details of design, materials and finish.  
 www.lightolier.com © 2008 Philips Group • C0908