

Module Ordering Information

Family	Series	Track	Length	Shielding	Lamps	Finish	Options
A	2	B		D			
		A = Track B = No Track	4 = 4-Foot 8 = 8-Foot 12 = 12-Foot	A = Solid B = Perf C = Pierce D = Lens	28 = 28w 54 = 54w	WH = White AL = Aluminum	E1 = Emergency Pack, 120v E2 = Emergency Pack, 277v D1 = Dimming 120v D2 = Dimming 277v X5 = 5 Through Wires

Complete ordering instructions below.

Features

- Housing:** Extruded aluminum housing in lengths of 4' (121.92cm), 8' (243.84cm) and 12' (365.76cm). There are no exposed fasteners. The end caps are die-cast aluminum sculpted and finished to match the housing.
- Reflector:** Die-formed high purity anodized specular aluminum.
- Lamping:** One T5 28W or 54W lamp per four-foot nominal length. Provided by others.
- Alignment Mechanism:** The housing and the end cap each have a draw tight mechanism that creates a hairline joint along and at the ends of the run. To operate the mechanism, the installer tightens two screws.
- Shielding:** Die-formed 20 ga. steel with 1.25" (3.18cm) X 1/8" (0.32cm) slots spaced on 1/4" centers backed by a 1/16" (0.16cm) white diffusing lens. Finished to match housing.

Labels

UL, cUL and I.B.E.W.

Finish

Powder coated baked white or silver enamel.
Custom colors available, consult factory.

Mountings

All mounting is on 48" (121.92cm), 96" (243.84cm) and 144" (365.76cm) centers.

Cable Suspension (not shown) 4-1/2" (11.43cm) diameter flat canopy finished white enamel, 1/16" (0.16cm) diameter stainless steel aircraft cable adjustable up to 36" (91.44cm) and adjustable cable gripper. Cable mounting at the ends of a run is not available when track is being used. Installing stems at the ends of the run will prevent the fixture from hanging off center caused by the weight of the track fixture. Cable suspension can be used in the center of runs that have track installed. Consult factory for other options.

Stem Mounting (not shown) - 4-1/2" (11.43cm) diameter flat canopy, 1/4" (0.64cm) IP (1/2" (1.27cm) OD) stem. The stem can accommodate up to 2-12 gauge and 3-18 gauge solid wires. All components have a white finish.

Electrical

Ballast is <10% THD, 1.0 ballast factor, program start. Color-coded quick connectors allow ease of connection for joiner modules. For special circuiting consult factory. Factory installed ballast disconnect allows the ballast to be disconnected from and reconnected to incoming power under load without turning the entire circuit off.

Dimming: 120/277 VAC 1% dimming level, 4 or 5 wire feed required.

Emergency Battery Pack: 28 watt: 520 lumens @ 90 minutes, 54 watt: 700 lumens @ 90 minutes.

Ordering Instructions

Individual Fixtures:

- Order number of MODULES required.
- Order one POWER FEED END SET per MODULE.

Continuous Rows:

- Determine run length.
- Order the appropriate number of MODULES for the complete run.
- Order one POWER FEED END SET per run.
- Order one INTERMEDIATE SUSPENSION per MODULE minus one per run.
- For runs that exceed amperage limits, order the appropriate number of INTERMEDIATE POWER FEEDS.

Job Information

Type:

Job Name:

Cat. No.:

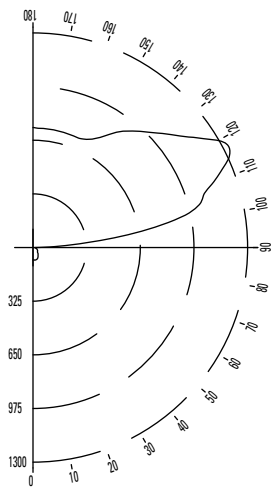
Lamp(s):

Notes:

631 Airport Road, Fall River, MA 02720 • (508) 679-8131 • Fax (508) 674-4710
We reserve the right to change details of design, materials and finish.
www.lightolier.com © 2008 Philips Group • C0908

Performance

CANDLEPOWER CURVE



ZONE DEG.	CANDLEPOWER				
	0	22	45	67	90
180	727	727	727	727	727
175	726	729	726	723	724
165	701	709	713	718	722
155	653	667	685	706	725
145	579	602	659	780	845
135	486	523	722	911	988
125	375	457	777	1045	1167
115	250	447	865	1236	1313
105	128	424	801	977	1053
95	22	306	349	349	316
90	2	51	24	12	10
85	3	17	16	14	13
75	9	11	16	20	21
65	22	21	22	27	28
55	37	38	29	33	34
45	50	54	45	42	38
35	61	64	61	58	54
25	68	72	72	72	69
15	74	75	77	77	76
5	77	77	77	76	75
0	76	76	76	76	76

COEFFICIENTS OF UTILIZATION

% EFFECTIVE CEILING CAVITY REFLECTANCE

ROOM CAVITY RATIO	WALL REFLECTANCE								
	80			70			50		
	70	50	30	70	50	30	50	30	10
0	84	54	84	73	73	73	51	51	51
1	77	73	70	66	63	60	44	43	41
2	70	64	59	60	55	51	39	36	34
3	63	56	50	54	48	43	34	31	28
4	58	49	43	50	43	37	30	27	24
5	53	44	37	45	38	32	27	23	21
6	49	39	32	42	34	28	24	20	18
7	45	35	28	38	30	25	21	18	15
8	41	31	25	35	27	22	19	16	13
9	38	28	22	33	25	20	18	14	12
10	35	26	20	31	22	17	16	13	10

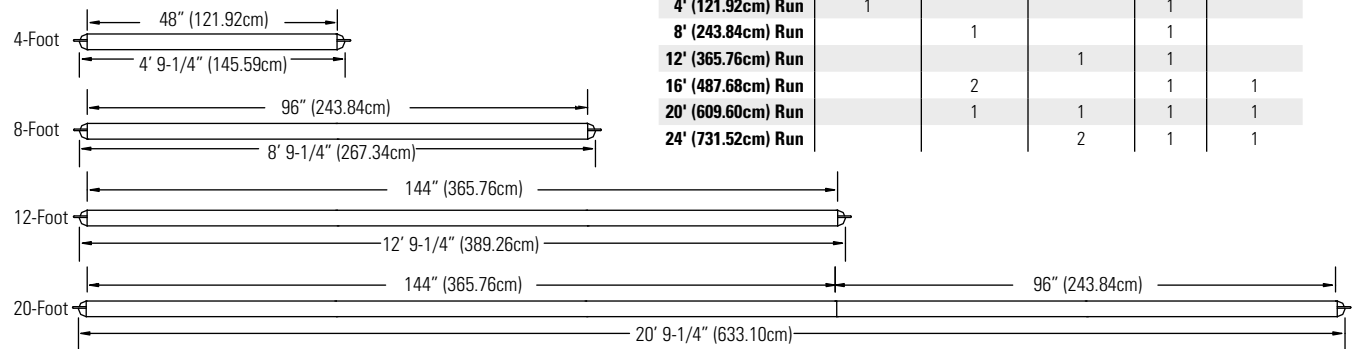
20% FLOOR CAVITY REFLECTANCE

DISTRIBUTION

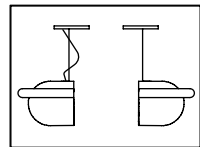
Zone	Lumens	% Lamp	% Luminaire
0-90	221	4.4	5.1
90-180	4146	82.9	94.9
0-180	4367	87.3	100.0

REPORT NO: ITL50921
 CAT NO: A2X4C54
 LAMPS: 1-F54T5
 LUMENS: 5000
 EFFICIENCY: 87.3%

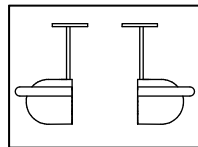
Fixture Lengths and Mounting Locations



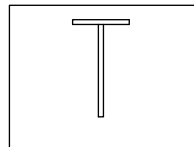
Mounting Accessories



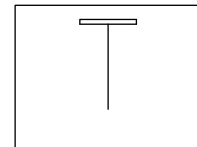
A2EC36ALX4 = Aluminum
A2EC36WHX4 = White
 4 Wires 18ga.
 Cable Power Feed
 End Set 36" (91.44cm) Cables



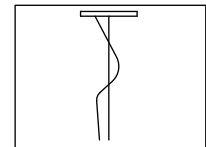
A2ES24ALX4 = Aluminum
A2ES24WHX4 = White
 4 Wires 18ga.
 Stem Power Feed
 End Set 24" (60.96cm) Cables



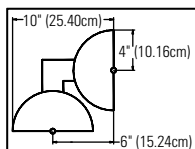
ALS24
 Intermediate
 24" (60.96cm) White Stem Set



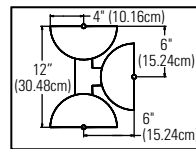
AC36
 Intermediate
 36" (91.44cm) Cable Set



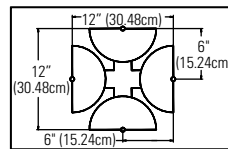
ACC36X4
 Intermediate 36" (91.44cm)
 Cable & 4 Wire 18 ga.
 Cord Set for Fluorescent Only



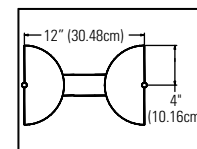
A2LAL = Aluminum
A2LWH = White
 "L" Joiner Block



A2TAL = Aluminum
A2TWH = White
 "T" Joiner Block



A2XAL = Aluminum
A2XWH = White
 "X" Joiner Block



A2ILAL = Aluminum
A2ILWH = White
 Inline Joiner Block

Job Information

Type:

631 Airport Road, Fall River, MA 02720 • (508) 679-8131 • Fax (508) 674-4710
 We reserve the right to change details of design, materials and finish.
 www.lightolier.com © 2008 Philips Group • C0908