

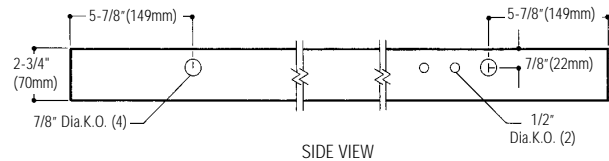
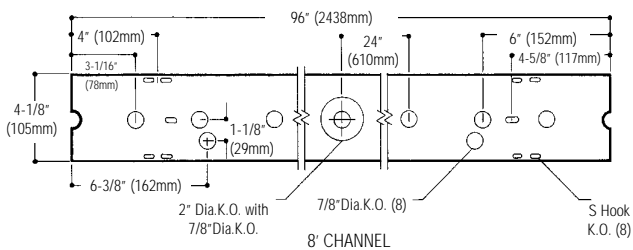
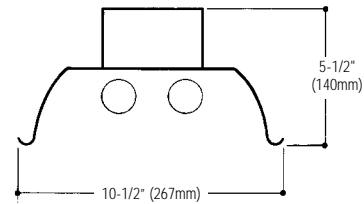
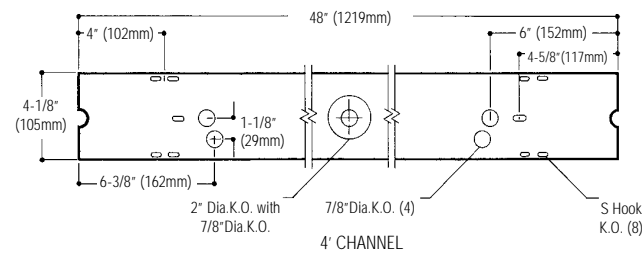
KD Industrial HO/VO Solid Top Fluorescent **KD SERIES HO/VO**

Features

- Reflectors are embossed for rigidity.
- Reflector sides are turned up for rigidity and safe handling.
- Solid top reflector, standard.
- 10% aperture reflector, optional.
- Reflectors easily installed with quarter turn fasteners. No tools required.
- 4-1/8" wide heavy duty channel of code gauge die-formed steel.
- Combination end cap/coupler requires no tools for installation.
- Suitable for individual or row mounting.
- Fully enclosed wiring.
- Multiple knockouts for convenient installation.
- Optional hangers, wire guards and aligners.
- Optional heavy duty coupling.



Dimensions



Job Information	Type:
Job Name:	
Cat. No.:	
Lamp(s):	
Volts/Ballast:	

Lightolier a Genlyte Thomas Company www.lightolier.com
 Technical Information: (978) 657-7600 • Fax (978) 658-0595
 631 Airport Road, Fall River, MA 02720 • (508) 679-8131 • Fax (508) 674-4710
 We reserve the right to change details of design, materials and finish.
 Copyright 2002 Lightolier **Section 7/Folio Q70-52**

LIGHTOLIER®

KD Industrial HO/VO Solid Top Fluorescent **KD SERIES HO/VO**

Page 2 of 2

4-1/8" Wide x 48" or 96" Lengths, Solid Top, 2 Lamp T8 or T12 HO or VHO

Photometry

Report No: G14118

Catalog No:

KD8S296HO120LE

Lamp Type: 2F96T12HO

Lumens Per Lamp: 13500

Total Efficiency: 85.9%

CIE Type: Direct

Spacing Criteria: 1.5

Shielding Angle: 180

Model No. **KD8S296HO120LE**

LER = FI - 104 IW - 203 BF - 0.91

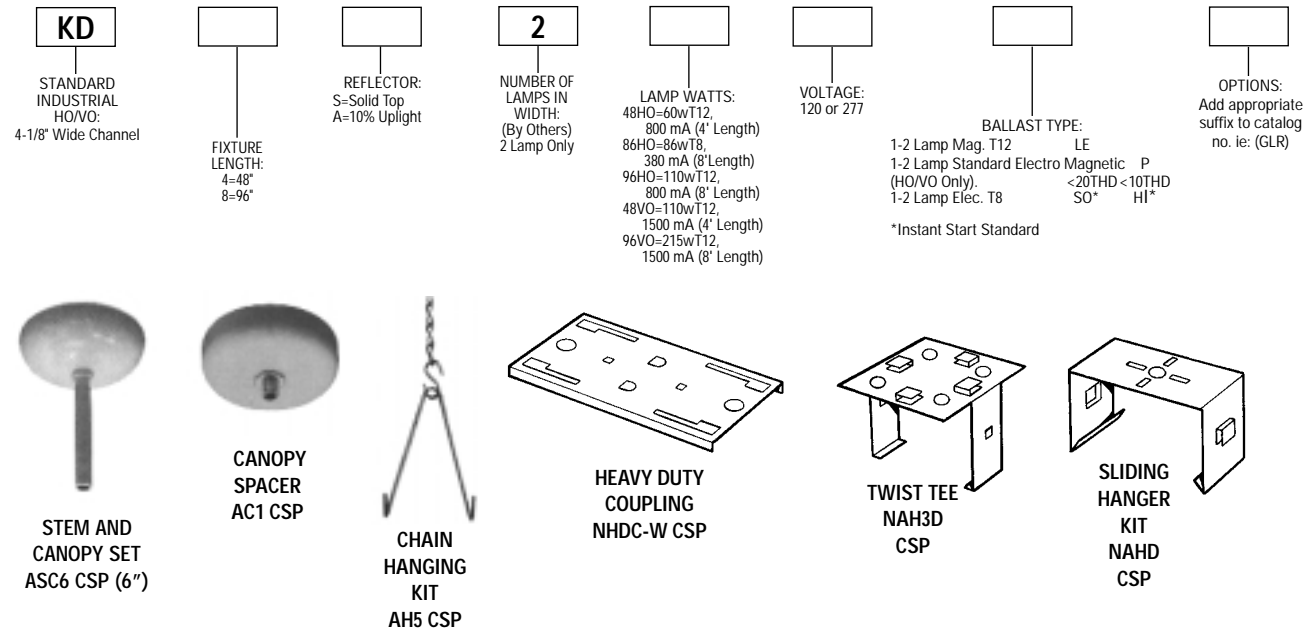
Comparative yearly lighting energy cost per 1000 lumens = \$2.30

coefficients of utilization- zonal cavity method

RF	20	50	30	RC	80	80	30	RW	70	50	30	50	30	10	50	30	10
room cavity method	1	92	87	83	80	77	74	76	74	71	68	66	61	58	57	52	48
	2	82	75	68	69	64	60	66	61	58	57	52	48	45	39	34	30
	3	75	65	57	60	54	49	57	52	48	45	39	34	30	27	23	21
	4	68	57	49	53	46	41	50	45	40	36	30	26	23	21	19	19
	5	62	50	42	47	40	35	45	39	34	30	26	23	21	19	19	19
	6	57	45	37	42	35	30	40	34	30	26	23	21	19	19	19	19
	7	53	41	33	38	31	26	36	30	26	23	21	19	19	19	19	19
	8	49	37	29	35	28	23	33	27	23	21	19	19	19	19	19	19
	9	46	34	26	32	25	21	31	25	21	19	19	19	19	19	19	19
	10	43	31	24	29	23	19	28	23	19	19	19	19	19	19	19	19

Ordering Information

Explanation of Catalog Number. Example: KD8S296HO120LEGLR



Options & Accessories

Fusing: Internal fast-blow fusing. Suffix: **GLR**.

Internal slow-blow fusing. Suffix: **GMF**.

Radio Interference Filter: 120 or 277 volt, 50 or 60 Hz. One per fixture.

Suffix: **R**. One per ballast. Suffix: **B**.

Fluorescent Emergency Lighting System: Factory-installed emergency power battery pack with charger and inverter. Suffix: **EM**.

Stem and Canopy Sets: Suspends fixture 6", 12", 18" or 24" from surface. Order Catalog Number: **ASC6 CSP (6")**, **ASC12 CSP (12")**, **ASC18 CSP (18")**, **ASC24 CSP (24")**.

Canopy Spacer: Suspends fixture 1-1/2" from surface.

Order Catalog Number: **AC1 CSP**

4'Wire Guard: Catalog Number: **AWG4W CSP**

Reflector Row Aligners: Two aligners are included with all 96" fixtures. For continuous row installations, specify two additional bulk-packed aligners per reflector joint. Catalog Number: **KNA**

Slide Grip Hangers: Catalog Number: **NAHD CSP**

Chain Hanging Kit: Includes two 5' heavy duty link chains with sturdy "V" hooks for fixture suspension. **AH5 CSP**

Heavy Duty Coupler: **NHDC-W CSP**

Specifications

Materials: Chassis parts are die-formed heavy gauge cold rolled steel.

Specifications (continued)

Reflector: Heavy duty die-formed with deep lateral embossments and return edges for additional stability and uniformity and two quick release quarter turn fasteners for attachment to housing.

Finish: Chassis—baked white enamel. Phosphate undercoating. Reflector—baked white enamel, high reflectance.

Finish: Chassis exterior—phosphate undercoating, baked white polyester enamel.

Electrical: Thermally protected class "P" ballast C.B.M. approved, non PCB. If K.O. is within 3" of ballast, use wire suitable for at least 90°.

Labels: I.B.E.W./UL and C-UL.

Job Information

Type:

Lightolier a Genlyte Thomas Company

www.lightolier.com

Technical Information: (978) 657-7600 • Fax (978) 658-0595

631 Airport Road, Fall River, MA 02720 • (508) 679-8131 • Fax (508) 674-4710

We reserve the right to change details of design, materials and finish.

Copyright 2002 Lightolier

Section 7/Folio Q70-52

LIGHTOLIER