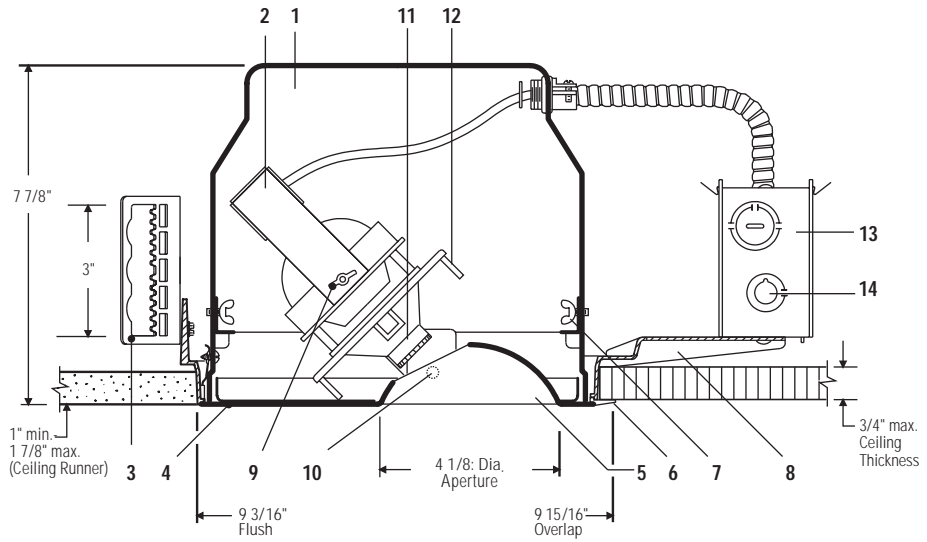
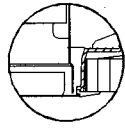
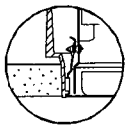
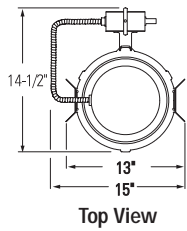




Calculite® Incandescent Adjustable Accent 7052QD



Ceiling Cutout: 9 1/4" (235 mm) Dia.

Catalog Number		Lamp
7052QD	Matte White Finish	T-4 100W Clear Tungsten Halogen, Mini-Can Base, 120V

Features

- Housing:** Spun 16 ga. aluminum separates from frame for inspection through aperture.
- Lampholder:** Die-formed steel yoke with mini-can socket, 18 SF1 leads to J-box.
- Mounting Brackets:** Adjust vertically from inside of fixture. Durable 16 ga. steel construction. Use with standard 3/4" or 1 1/2" lathing channels, or 1/2" (11/16" O.D.) EMT pipe (by others) or Lightolier accessory mounting bars.
- Face Plate:** Die-formed steel 20 ga. with integral cone, matte white baked enamel.
- Aperture Cone:** Designed to minimize glare and reduce brightness at ceiling plane.
- Molded Trim Ring:** Provides minimum width white flange in dry or plaster ceiling.
- Horizontal Locking Device:** Provides locking of horizontal rotation. Optical assembly rotates up to 358°.
- Mounting Frame:** Die-cast aluminum, suitable for dry or plaster ceilings.
- Locking Device:** Allows removal of optical system for relamping without disturbing shutter position.
- Vertical Locking Device:** Locks optical assembly which may be adjusted from 0° to 45°.
- Focusing Lens:** System provides hard or softened edge image projection.
- Shutters:** Four spring shutters with porcelain hand knobs allow for adjustment by cut-off of edge of light beam. Internal clips hold 2" square or round templates (included).
- Junction Box:** 14 ga. steel, 4" x 3" x 2" box allows inspection from below.
- Thermal Protector:** Meets NEC and UL requirements. Insulation must be kept 3" away from fixture sides and wiring compartments and must not be placed above fixture in a manner which will entrap heat.

Accessories and Options

- | | |
|------------------------------|------------------------------------------------------------------|
| 18" Mounting Bars | 1950 (set of 2) |
| 27" Mounting Bars | 1951 (set of 2) |
| T-Bar Anchor Clips | 1956 (set of 4, for 1950 & 1951 bars) |
| Wood Joist Mtg. Bars | 7994 (set of 2) |
| Step Down Transformer | 7997 (277V primary 1.1 amp/120V secondary, 300W capacity) |

Electrical

UL Listed for maximum of 8 No. 12, 75°C through branch circuit supply conductors, or 60°C supply conductors for end of run.

Labels

UL Listed for damp locations, I.B.E.W.

Job Information	Type:
Job Name:	
Cat. No.:	
Lamp(s):	
Notes:	

Lightolier a Genlyte Thomas Company www.lightolier.com
 631 Airport Road, Fall River, MA 02720 • (508) 679-8131 • Fax (508) 674-4710
 We reserve the right to change details of design, materials and finish.
 © 2002 Genlyte Thomas Group LLC (Lightolier Division) • A0902

LIGHTOLIER®



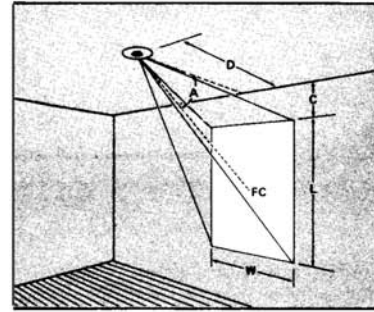
LIGHTING DATA

MAXIMUM BEAM COVERAGE AND ILLUMINATION ON VERTICAL PLANE

**AIMING ANGLES: 45°, 60° FROM HORIZONTAL.
SHUTTERS FULLY OPEN.**

EXAMPLE:

At a 30" mounting distance (D) and a 45° aiming angle (A), the Framing Projector with the shutters fully open will illuminate a rectangular area 25" wide by 46" high, 11" down from the ceiling, and will provide 41 footcandles on the beam axis.

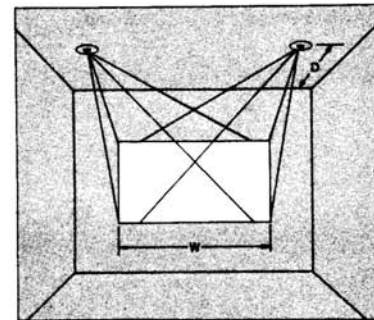


DISTANCE (D)	24"		30"		36"		42"		48"		54"		60"	
AIMING ANGLE (A) (from horizontal)	45°	60°	45°	60°	45°	60°	45°	60°	45°	60°	45°	60°	45°	60°
DISTANCE (C) (Min.)	8"	17"	11"	21"	13"	26"	16"	30"	18"	35"	21"	40"	23"	44"
WIDTH (W) (Max.)	20"	25"	25"	31"	29"	38"	34"	44"	39"	50"	44"	56"	49"	63"
LENGTH (L) (Max.) *	37"	65"	46"	82"	56"	98"	65"	114"	74"	131"	84"	147"	93"	163"
F. C. ON BEAM AXIS	63	22	41	14	28	10	21	7	16	6	13	5	10	4

* Length (L) on the point where illumination drops to 10% of illumination on beam axis.

BEAM COVERAGE FOR WIDE PICTURES WITH TWO FRAMING PROJECTORS

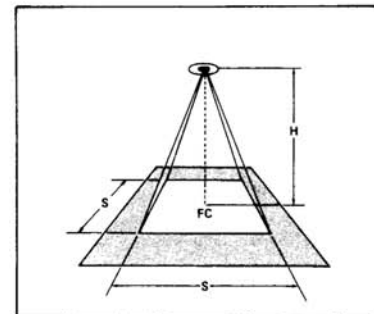
1. Find the required distance (D) (from table above) to illuminate half the painting width (W).
2. At distance (D) mount the projectors on line with (or beyond) the edge of the painting.
3. Aim the projectors at an oblique angle to the painting so that the beams overlap the majority of the painting for even illumination.
4. Adjust projector shutters to the size of the painting.



MAXIMUM BEAM COVERAGE AND ILLUMINATION ON HORIZONTAL PLANE

**AIMING ANGLE: 0° FROM VERTICAL.
SHUTTERS FULLY OPEN.**

DISTANCE (H)	4'	5'	6'	7'	8'	9'	10'	11'	12'
SIDES (S) (Max.)	41"	51"	61"	71"	81"	91"	101"	111"	121"
F. C. ON BEAM AXIS	41	27	19	14	11	9	7	6	5



Job Information Type:

Lightolier a Genlyte Thomas Company www.lightolier.com
 631 Airport Road, Fall River, MA 02720 • (508) 679-8131 • Fax (508) 674-4710
 We reserve the right to change details of design, materials and finish.
 © 2002 Genlyte Thomas Group LLC (Lightolier Division) • A0902

LIGHTOLIER