

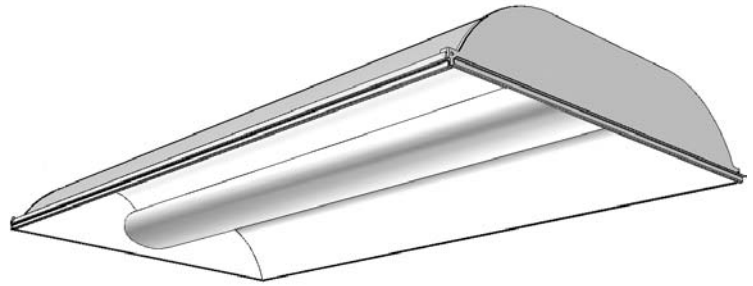
HP90 Recessed Fluorescent **H9S2GLR132 or 232**

Page 1 of 2

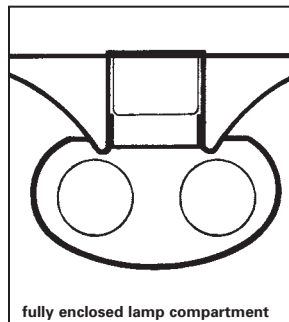
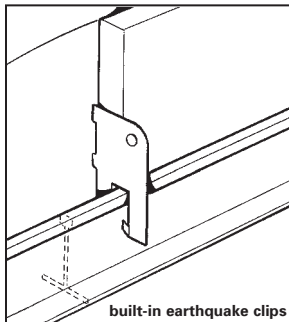
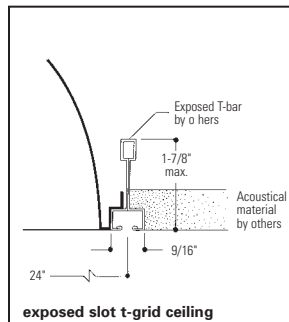
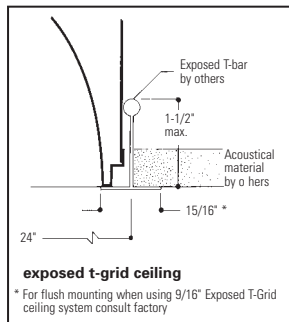
Direct/Indirect – 2' x 4' with Acrylic Linear Prismatic Lens
Static, 2 Lamp T8

Features

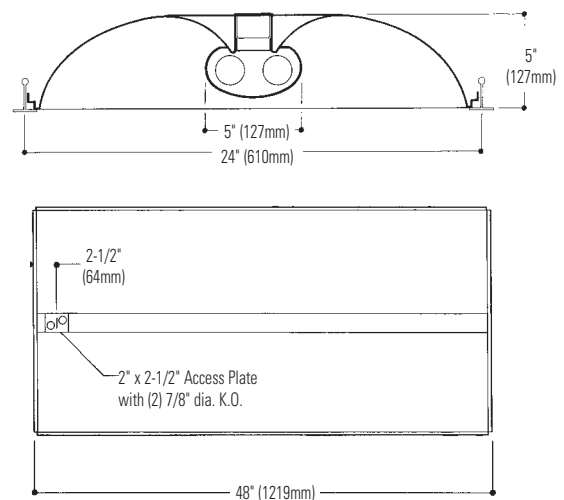
- 84.6% efficient (2 lamp, 28W).
- 80.0% efficient (1 lamp, 28W).
- Direct/indirect appearance with soft contoured interior.
- Lens encloses lamp compartment.
- Translucent DR acrylic linear prismatic lens.
- Tension screws secure ends to body.
- Same fixture fits both G and T ceiling types.
- Fits flush to face of slot grid (T) ceiling types.
- Lamp shield opens from either side.
- 95% reflective specular aluminum reflector.
- Ballast accessible from room side.
- Can be continuous row mounted.
- Wiring access plate standard.
- Optional DALI ballast iGEN TECHNOLOGY accepts digital dimming controllers, scene controllers and automatic control devices.
- Construction to meet NYC Code or Chicago Plenum available.



Mounting Methods



Dimensions



Job Information

Type:

Job Name:

Cat. No.:

Lamp(s):

Volts/Ballast:

Lightolier a Genlyte company www.lightolier.com
Technical Information: (978) 657-7600 • Fax (978) 658-0595
631 Airport Road, Fall River, MA 02720 • (508) 679-8131 • Fax (508) 674-4710
We reserve the right to change details of design, materials and finish.
© 2007 a Genlyte company **Section 5/Folio M32-13**



HP90 Recessed Fluorescent H9S2GLR132 or 232

Model No. H9S2GLR132UNVHI

LER = FP - 74.8 IW - 26.66 BF - 0.88
Comparative yearly lighting ene gy cost per
1000 lumens = \$3.21

Report Number: G2007123
Catalog Number: H9S2GLR132UNVHI
Lamps: (1) F28 T8
Luminaire: HP90 2' x 4' with linear
prismatic lens.
Ballast: GE-132-MAX-N/ULTRA
Report is based on 2725 Lumens per lamp.
Efficiency: 80%
CIE Type-Direct-Indirect
Plane: 0-Deg 90-Deg
Spacing Criteria: 1.2 1.4
Shielding Angles: 90 90
Plane: 0-Deg 90-Deg
Luminous Length: 46.800 22.800

CANDELA DISTRIBUTION

	0.0	45.0	90.0	FLUX
0	659	659	659	
5	654	658	660	63
15	628	643	655	182
25	578	612	641	282
35	507	562	609	351
45	415	495	562	380
55	306	415	497	365
65	186	322	420	311
75	86	223	275	208
85	20	33	24	39
90	3	3	2	

Model No. H9S2GLR232UNVHI

LER = FP - 73.6 IW - 55.1 BF - 0.88
Comparative yearly lighting ene gy cost per
1000 lumens = \$3.26

Report Number: G2007007
Catalog Number: H9S2GLR232UNVHI
Lamps: (2) F28 T8
Luminaire: HP90 2' x 4' with linear
prismatic lens.
Ballast: GE-232-MAX-N/ULTRA
Report is based on 2725 Lumens per lamp.
Efficiency: 84.6%
CIE Type-Direct-Indirect
Plane: 0-Deg 90-Deg
Spacing Criteria: 1.2 1.4
Shielding Angles: 90 90
Plane: 0-Deg 90-Deg
Luminous Length: 46.800 22.800

CANDELA DISTRIBUTION

	0.0	45.0	90.0	FLUX
0	1481	1481	1481	
5	1471	1474	1478	140
15	1421	1429	1446	404
25	1298	1344	1398	620
35	1131	1219	1301	763
45	921	1061	1175	814
55	673	872	1006	767
65	412	659	803	629
75	191	424	490	394
85	40	63	41	77
90	3	3	3	

COEFFICIENTS OF UTILIZATION – ZONAL CAVITY METHOD. EFFECTIVE FLOOR CAVITY REFLECTANCE 0.20

RC	80	50	30	10	50	30	10
1	86	82	79	77	74	72	70
2	78	71	65	67	62	58	60
3	71	62	55	58	53	48	51
4	64	54	47	51	45	40	44
5	59	48	41	46	39	35	39
6	54	43	36	41	35	30	34
7	50	39	32	37	31	26	30
8	47	36	29	34	28	24	27
9	44	33	26	31	25	21	24
10	41	30	24	29	23	19	23

ZONAL LUMEN SUMMARY

ZONE	LUMENS	% LAMP	% FIXT
0- 30	526	19.3	24.1
0- 40	877	32.2	40.2
0- 60	1623	59.6	74.4
0- 90	2180	80.0	100.0
90-180	0	0.0	0.0
0-180	2180	80.0	100.0

COEFFICIENTS OF UTILIZATION – ZONAL CAVITY METHOD. EFFECTIVE FLOOR CAVITY REFLECTANCE 0.20

RC	80	50	30	10	50	30	10
1	92	87	84	82	79	76	74
2	83	76	70	71	66	62	61
3	75	66	59	62	56	52	51
4	69	58	50	55	49	44	43
5	63	52	44	49	42	38	37
6	58	47	39	44	38	33	32
7	54	42	34	40	34	29	29
8	50	38	31	37	30	26	25
9	47	35	28	34	27	23	23
10	44	32	26	31	25	21	21

ZONAL LUMEN SUMMARY

ZONE	LUMENS	% LAMP	% FIXT
0- 30	1165	21.4	25.3
0- 40	1927	35.4	41.8
0- 60	3508	64.4	76.1
0- 90	4609	84.6	100.0
90-180	0	0.0	0.0
0-180	4609	84.6	100.0

LUMINANCE DATA IN CANDELA/SQ. METER

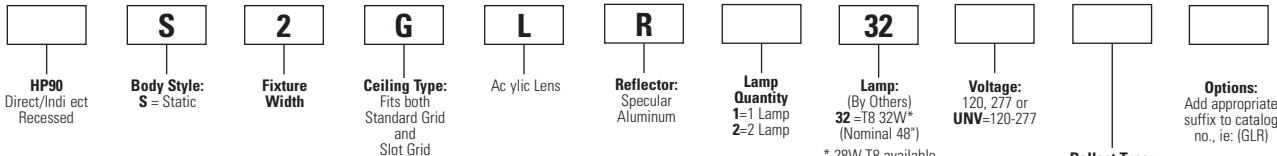
AVERAGE IN DEG.	AVERAGE 0-DEG.	AVERAGE 45-DEG.	AVERAGE 90-DEG.
45	789.	942.	1069.
55	718.	973.	1165.
65	592.	1025.	1337.
75	447.	1159.	1429.
85	309.	509.	370.

LUMINANCE DATA IN CANDELA/SQ. METER

AVERAGE IN DEG.	AVERAGE 0-DEG.	AVERAGE 45-DEG.	AVERAGE 90-DEG.
45	1891.	2179.	2413.
55	1704.	2208.	2574.
65	1416.	2264.	2759.
75	1072.	2379.	2749.
85	666.	1050.	683.

Ordering Information

Explanation of Catalog Number. Example: H9S2GLR232UNVHI



- H9** Standard HP90
- HY** For NYC Code – I.B.E.W. Manufactured
- HN** For NYC Code – Local 3 Manufactured

1 or 2 Lamp Elec. T8
LOL Dimming T8
*Instant Start Standard
Other dimming options. Consult factory.
NOTE: For T8 UNV, you must use HI Ballast Code.

Options/Accessories

Fusing: Internal fast blow fusing: SUFFIX: **GLR**.
Internal slow blow fusing: SUFFIX: **GMF**.
Drywall Kit: Order Catalog Number: **FK92X4**.
Electrical Wiring Options: Consult factory.
For motion or light sensor. See Folio OA20-10.

Specifications

Performance: In an installation of 2 lamp 28W luminaires in a room cavity ratio of 1, with reflectance 80% ceiling, 50% wall, 20% floor, the C.U. shall not be less than .87. To reduce glare the average brightness at 65° shall not exceed 2759 candelas per square meter. To control veiling reflections, luminaire output in the 30°-90° zone shall not be less than 74.7%.

Materials: Chassis parts are die-formed code gauge steel.
Lamp Shield: Linear prismatic translucent DR acrylic lens.
Finish: Chassis exterior – baked white polyester enamel. Cavity – baked white polyester enamel. Rust preventative undercoating. Reflector – low iridescence specular aluminum 95% reflectance.

Specifications (continued)

Electrical: Thermally protected class "P" ballast C.B.M. approved, non PCB. If K.O. is within 3" of ballast, use wire suitable for at least 90°. UL Listed for damp locations.
Labels: I.B.E.W./UL and ULc Listed.
This product may have a mercury containing lamp. Manage in accord with Disposal Laws. See: www.lamprecycle.org

Job Information Type:

Lightolier a Genlyte company www.lightolier.com
Technical Information: (978) 657-7600 • Fax (978) 658-0595
631 Airport Road, Fall River, MA 02720 • (508) 679-8131 • Fax (508) 674-4710
We reserve the right to change details of design, materials and finish.
© 2007 a Genlyte company **Section 5/Folio M32-13**

LIGHTOLIER