

Ordering Information

Family	Series	Type	Lamps	Color	Wattage	Voltage	Length	Options
F7	6 6 = Lens	5 5 = Extruded Lens	2 2 = 2 Lamps	AL = Aluminum WH = White	1 = 28W 2 = 54W 3 = 28W Dimming 4 = 28W EM 5 = 54W Dimming 6 = 54W EM	1 = 120v 2 = 277v	4 4 = 4' (121.92cm)	TR = Top Reflector T4 = TR + 4 Through Wires T5 = TR + 5 Through Wires TD = TR + Dual Switch

Complete Ordering Instructions below.

Features

- Housing:** Single piece of high purity extruded aluminum, a portion from recycled material.
- Housing End:** Die-cast aluminum, welded in place.
- End Cap:** Die-cast aluminum. Encloses the suspension cable and power feed cord for the end of the run.
- Lamps:** F28T5 or F54T5HO as specified. By others. Installed from the ceiling side of the luminaire.
- Ballast:** Electronic. Meets ANSI starting, end-of-life protection and sound rating specifications. Low THD.
- Shielding:** Extruded acrylic with suspended bead texture; inset metal rod.
- Top Reflector:** High purity semi-specular anodized aluminum. Removable for relamping.

Electrical

Connections: 18 gauge pre-wired with polarized cannon plug connectors for simultaneous mechanical/electrical connection.

Emergency Battery Pack: 90 minute operation, 700 lumens for 54W and 520 lumens for 28W.

Dimming: Advance Mark X standard (no additional wires required); use compatible dimmer. Dimming ballasts using additional control wires (eg Lutron Hi-Lume or ECO-10, Osram) can be used; consult factory and use X4 or X5 power feeds with additional leads, as appropriate. Ballast not to exceed 1.25" (3.18cm) wide by 1.20" (3.05cm) high.

iGEN: F7000 accepts iGEN (DALI) with supplemental 2-wire control technology. Use with X5 power feed.

Power Tray: Code-gauge, die-formed steel, pre-paint white enamel finish; secured by quarter-turn fasteners for easy access to wiring. Holds ballasts, sockets, and wiring. Accepts ballasts up to 1.25" (3.18cm) wide by 1.20" (3.05cm) high.

Power Feeds: Standard 18/3 power feed is rated for 10 amps. X4 power feed is 18/4 and is rated for 7 amps. Observe amperage limitations and provide additional Intermediate Power Cables, as required. When providing an additional power feed, the through wiring from the previous module must be disconnected from the cannon plug and capped.

Dual Switching: Use DS option for separate switching of the lamp rows. DS includes a 4th through wire. Use X4 power feed.

Factory installed ballast disconnect allows the ballast to be disconnected from and reconnected to incoming power under load without turning the entire circuit off.

Finish

Powder-coated, baked enamel, white or aluminum, as specified.

Mounting

Cable suspension is on 48" (121.92cm) and 96" (243.84cm) centers and consists of a 4 1/2" (11.43cm) diameter canopy finished white enamel and a 1/16" (0.16cm) diameter stainless steel aircraft cable adjustable up to 36" (91.44cm).

Labels

UL, cUL and I.B.E.W.

Ordering Instructions

Individual Fixtures:

- Order one MODULE.
- Order one POWER FEED END SET.

Continuous Rows:

- Order the appropriate number of MODULES for the complete run.
- Order one POWER FEED END SET.
- Order one INTERMEDIATE CABLE SET per MODULE minus one.
- For runs that exceed amperage limits, order the appropriate number of CABLE/CORD SETS.

Job Information

Type:

Job Name:

Cat. No.:

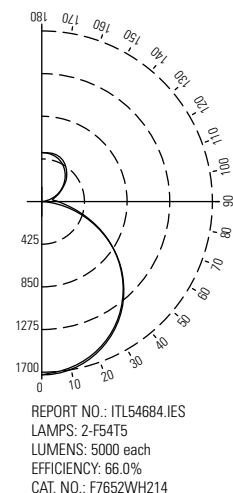
Lamp(s):

Notes:

631 Airport Road, Fall River, MA 02720 • (508) 679-8131 • Fax (508) 674-4710
We reserve the right to change details of design, materials and finish.
www.lightolier.com © 2008 Philips Group • F0808

Performance

CANDLEPOWER CURVE



ZONE DEG.	CANDLEPOWER				
	0	22	45	67	90
CANDELAS					
0	1725	1725	1725	1725	1725
5	1720	1728	1716	1706	1704
15	1658	1662	1648	1642	1638
25	1540	1543	1528	1527	1522
35	1369	1370	1360	1362	1357
45	1151	1155	1146	1148	1144
55	901	902	895	900	897
65	617	619	621	634	630
75	319	335	349	369	368
85	72	95	157	206	214
95	21	34	73	110	127
105	88	99	108	121	122
115	172	189	182	191	188
125	253	279	274	273	265
135	329	356	358	355	350
145	395	414	424	425	420
155	443	456	467	472	469
165	473	479	485	490	491
175	488	490	487	486	486
180	489	489	489	489	489

COEFFICIENTS OF UTILIZATION % EFFECTIVE CEILING CAVITY REFLECTANCE

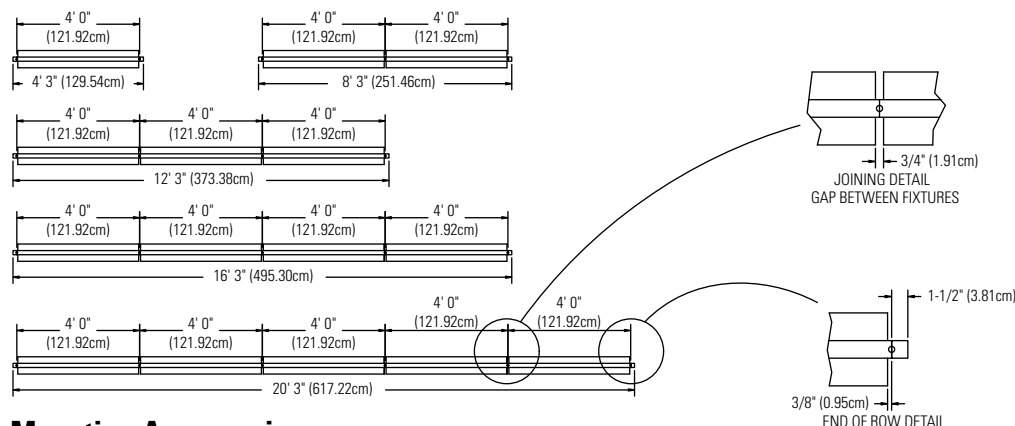
		80%			70%			50%		
		WALL REFLECTANCE								
		50	30	10	50	30	10	50	30	10
ROOM CAVITY RATIO	0	75	75	75	71	71	71	65	65	65
	1	65	62	59	62	59	57	56	54	52
	2	56	52	48	54	50	46	49	46	43
	3	49	44	40	47	42	39	43	39	36
	4	44	38	34	42	37	33	38	34	31
	5	39	33	29	37	32	28	34	30	26
	6	35	29	25	34	28	24	31	26	23
	7	32	26	22	30	25	21	28	23	20
	8	29	23	20	28	23	19	26	21	18
	9	26	21	17	25	20	17	23	19	16
10	24	19	16	23	19	15	22	17	15	

20% FLOOR CAVITY REFLECTANCE

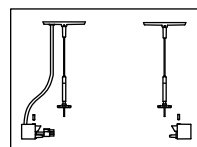
DISTRIBUTION

Zone	Lumens	% Lamp	% Luminaire
0 - 90	5036	50.0	76.0
90 - 180	1557	16.0	24.0
0 - 180	6593	66.0	100.0

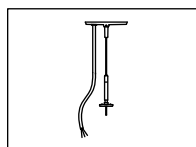
Fixture Lengths & Mounting Reflected (Plan View)



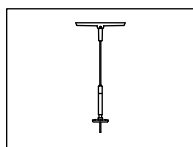
Mounting Accessories



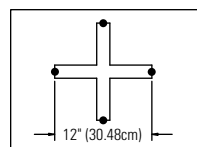
Power Feed End Set:
F7EC36WH = White
F7EC36AL = Aluminum
F7EC36WHX4 = White 4 Wire
F7EC36ALX4 = Aluminum 4 Wire
F7EC36WHX5 = White 5 Wire
F7EC36ALX5 = Aluminum 5 Wire



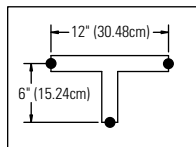
Intermediate Power Cable
F7CC36 = 3 Wire
F7CC36X4 = 4 Wire



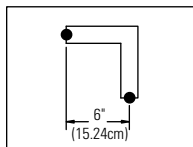
Intermediate Cable Set
F7C36



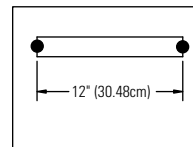
"X" Joiner Block
F7XWH = White
F7XAL = Aluminum



"T" Joiner Block
F7TWH = White
F7TAL = Aluminum



"L" Joiner Block
F7LWH = White
F7LAL = Aluminum



Inline Joiner Block
F71LWH = White 1" (30.48cm)
F71LAL = Aluminum 1" (30.48cm)
F71L2WH = White 2" (60.96cm)
F71L2AL = Aluminum 2" (60.96cm)
F71L4WH = White 4" (121.92cm)
F71L4AL = Aluminum 4" (121.92cm)
F71L8WH = White 8" (243.84cm)
F71L8AL = Aluminum 8" (243.84cm)

Job Information

Type:

631 Airport Road, Fall River, MA 02720 • (508) 679-8131 • Fax (508) 674-4710
We reserve the right to change details of design, materials and finish.
www.lightolier.com © 2008 Philips Group • F0808