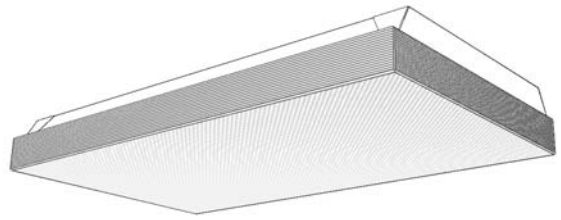


# DominaireII WB Series 417/2FT

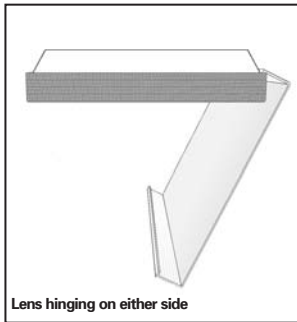
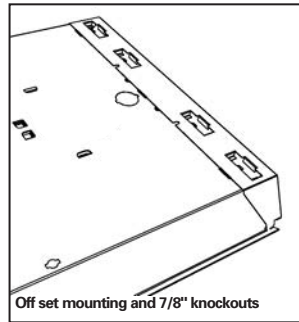
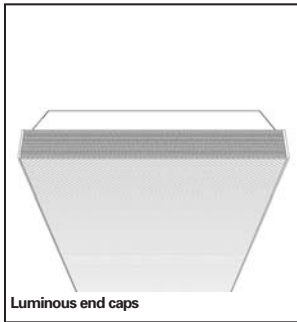
Surface Wraparound Fluorescent  
14" Wide X 3" Deep X 24" Length, T8 OR TT5 Lamps

## Features

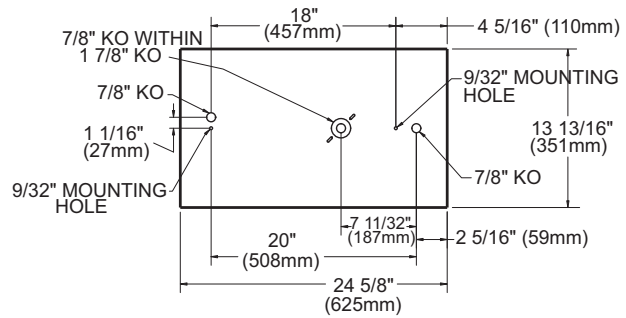
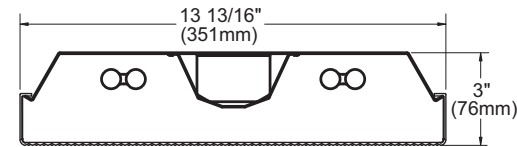
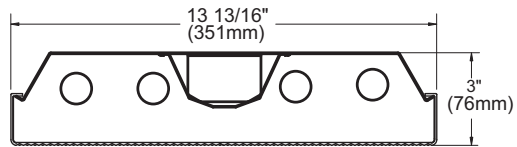
- Excellent for lighting Cafeterias, Small Offices, Corridors, Kitchens and Family Rooms.
- Step back housing for an apparent depth of 1½".
- Completely assembled with setup ends with lamp holders.
- Only 3" total depth.
- Prismatic virgin acrylic lens - 14" wide.
- 69% efficient (4 Lamp T8).
- 72.1% efficient (2 Lamp TT5).
- Luminous catadioptric end caps.
- Self-leveling lens opens and hinges from either side.
- Off-center 7/8" K.O. for flush mount to T-grid ceiling.
- For surface mounting only.



## Features



## Dimensions



## Job Information

Type:

Job Name:

Cat. No.:

Lamp(s):

Volts/Ballast:

Lightolier a Genlyte company

www.lightolier.com

Technical Information: (978) 657-7600 • Fax (978) 658-0595

631 Airport Road, Fall River, MA 02720 • (508) 679-8131 • Fax (508) 674-4710

We reserve the right to change details of design, materials and finish.

© 2007 a Genlyte company

Section 3A/Folio H90-15

# DominaireII WB Series 417/2FT

## Model No. WB2B417UNVH4

LER = FP - 61.5 IW - 54.3 BF - 0.88  
Comparative yearly lighting energy cost per  
1000 lumens = \$3.90

Report Number: G2007050  
Lamp: (4) F17T8  
Luminaire: Dominaire II WB with clear  
prismatic lens  
Ballast: B4321UNVHP-A (Triad)  
Report is based on 1375 Lumens per lamp.  
Efficiency: 69.0%  
CIE Type - Direct  
Plane: 0-Deg 90-Deg  
Spacing Criteria: 1.2 1.4  
Shielding Angles: 90 90

### COEFFICIENTS OF UTILIZATION - ZONAL CAVITY METHOD. EFFECTIVE FLOOR CAVITY REFLECTANCE 0.20

RC	80	50	30	10	50	30	10
1	74	69	65	63	62	60	59
2	68	63	58	55	52	50	50
3	63	56	51	48	44	43	43
4	58	50	44	42	38	40	37
5	53	45	39	37	33	33	33
6	49	40	35	33	29	32	29
7	46	37	31	30	26	33	29
8	43	34	28	27	24	30	26
9	40	31	25	25	21	28	24
10	37	29	23	22	19	26	22

### LUMINANCE DATA IN CANDELA/SQ. METER

AVERAGE IN DEG.	AVERAGE 0-DEG.	AVERAGE 45-DEG.	AVERAGE 90-DEG.
45	4751.	5496.	5487.
55	3037.	3833.	3481.
65	2497.	2526.	2585.
75	2228.	2063.	2403.
85	1714.	1826.	2098.

### CANDELA DISTRIBUTION

	0.0	45.0	90.0	FLUX
0	1380	1380	1380	
5	1373	1376	1378	131
15	1321	1345	1364	380
25	1218	1282	1327	589
35	1058	1168	1216	721
45	800	949	971	700
55	427	558	524	468
65	271	288	309	282
75	163	163	204	177
85	61	76	100	83
90	28	39	65	
95	30	38	69	50
105	44	48	95	64
115	37	63	64	55
125	26	40	45	35
135	22	36	38	26
145	17	29	32	17
155	13	21	24	9
165	10	13	15	4
175	7	8	8	1
180	7	7	7	

### ZONAL LUMEN SUMMARY

ZONE	LUMENS	% LAMP	% FIXT
0- 30	1100	20.0	29.0
0- 40	1821	33.1	48.0
0- 60	2989	54.4	78.8
0- 90	3532	64.2	93.1
90-120	170	3.1	4.5
90-130	205	3.7	5.4
90-150	249	4.5	6.6
90-180	263	4.8	6.9
0-180	3795	69.0	100.0

## Model No. WB2B2FTUNVIB

LER = FP - 58.7 IW - 69.6 BF - 0.90  
Comparative yearly lighting energy cost per  
1000 lumens = \$4.09

Report Number: G2007068  
Lamp: (2) TT5 40W  
Luminaire: Dominaire II WB with clear  
prismatic lens  
Ballast: C240PUNVHP-B (Triad)  
Report is based on 3150 Lumens per lamp.  
Efficiency: 72.1%  
CIE Type - Direct  
Plane: 0-Deg 90-Deg  
Spacing Criteria: 1.2 1.4  
Shielding Angles: 90 90

### COEFFICIENTS OF UTILIZATION - ZONAL CAVITY METHOD. EFFECTIVE FLOOR CAVITY REFLECTANCE 0.20

RC	80	50	30	10	50	30	10
1	75	72	69	67	65	64	62
2	72	66	62	61	58	58	55
3	66	59	53	55	50	47	48
4	61	53	47	49	44	41	43
5	56	47	41	44	39	36	42
6	52	43	37	40	35	31	39
7	48	39	33	37	32	28	35
8	45	36	30	34	29	25	32
9	42	33	27	31	26	23	30
10	39	30	25	29	24	21	28

### LUMINANCE DATA IN CANDELA/SQ. METER

AVERAGE IN DEG.	AVERAGE 0-DEG.	AVERAGE 45-DEG.	AVERAGE 90-DEG.
45	5649.	6348.	5770.
55	3682.	4075.	3395.
65	2931.	2752.	2504.
75	2547.	2261.	2403.
85	1931.	1906.	2002.

### CANDELA DISTRIBUTION

	0.0	45.0	90.0	FLUX
0	1664	1664	1664	
5	1652	1663	1667	159
15	1596	1645	1685	465
25	1480	1607	1694	738
35	1296	1508	1550	914
45	986	1141	1067	832
55	538	620	537	525
65	332	330	317	318
75	196	190	219	203
85	74	87	106	94
90	38	46	71	
95	43	46	79	61
105	61	61	97	75
115	41	64	48	54
125	31	43	43	37
135	29	40	40	30
145	23	34	35	20
155	18	26	28	12
165	13	16	20	5
175	10	11	11	1
180	9	9	9	

### ZONAL LUMEN SUMMARY

ZONE	LUMENS	% LAMP	% FIXT
0- 30	1361	21.6	30.0
0- 40	2275	36.1	50.1
0- 60	3633	57.7	80.0
0- 90	4248	67.4	93.5
90-120	190	3.0	4.2
90-130	227	3.6	5.0
90-150	276	4.4	6.1
90-180	294	4.7	6.5
0-180	4542	72.1	100.0

## Ordering Information

Explanation of Catalog Number. Example: WB2B417UNVHI

<b>WB</b>	<b>2</b>	<b>B</b>			<b>UNV</b>		
DOMINAIRE II: White Surface Wrap Fluorescent with White Body	Fixture Length: 2 = 2' Length	Fixture Width: B = 14" Wide	Lamp Quantity 4 = 4 Lamp T8 2 = 2 Lamp TT5	Lamp: (By Others) 17 = T8 17W FT = TT5 40W (Nominal 24")	Voltage: UNV=120-277	Options: Add appropriate suffix to catalog no., ie: (GLR) Consult factory for additional options	Ballast Type: <10THD HI † H4 † IB †
							2 - 2 Lamp Elec. T8 (17 Watt) 1 - 4 Lamp Elec. T8 (17 Watt) 2 Lamp Elec. TT5 (40 Watt) †Instant Start (UNV)

## Options/Accessories

**Electrical Wiring Options:** Consult factory for Emergency pack and dimming options.

**Fusing:** Internal fast blow fusing: SUFFIX: **GLR**.  
Internal slow blow fusing: SUFFIX: **GMF**.

## Specifications

**Performance:** In an installation of 4 lamp 17W luminaires in a room cavity ratio of 1, with reflectance 80% ceiling, 50% wall, 20% floor, the C.U. shall not be less than .71. To reduce glare the average brightness at 65° shall not exceed 2585 candelas per square meter. To control veiling reflections, luminaire output in the 30°-90° zone shall not be less than 64.1%.

**Materials: Chassis parts** are die-formed code gauge cold rolled steel.

**Finish: Chassis exterior** - baked white polyester enamel. **Cavity** - baked white polyester enamel. Rust preventive undercoating.

**Lens:** One-piece extruded virgin acrylic prismatic bottom and side walls.

## Specifications (continued)

**End Caps:** Injection molded catadioptric end caps separate from lens.

**Electrical:** Thermally protected class "P" ballast C.B.M. approved, non PCB. If K.O. is within 3" of ballast, use wire suitable for at least 90°.

**Labels:** I.B.E.W./UL and ULc Listed.

This product may have a mercury containing lamp. Manage in accord with Disposal Laws. See: [www.lamprecycle.org](http://www.lamprecycle.org)

<b>Job Information</b>	<b>Type:</b>
------------------------	--------------

**Lightolier** a Genlyte company [www.lightolier.com](http://www.lightolier.com)  
Technical Information: (978) 657-7600 • Fax (978) 658-0595  
631 Airport Road, Fall River, MA 02720 • (508) 679-8131 • Fax (508) 674-4710  
We reserve the right to change details of design, materials and finish.  
© 2007 a Genlyte company **Section 3A/Folio H90-15**

**LIGHTOLIER®**