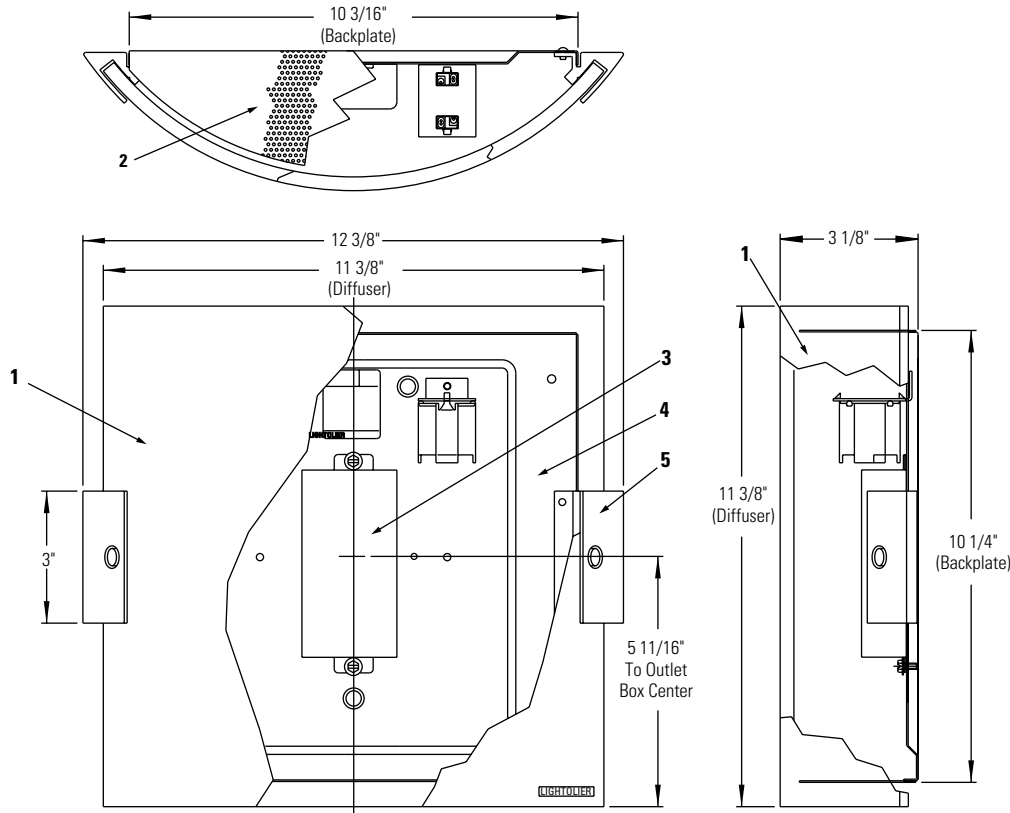




Decorative ADA Matrix® Diffused Light 40602U

Page 1 of 2

Wall Mounted Fluorescent



Cat. No.	Finish	Lamps	Width	Height	Extension	Ballast Type	Voltage
40602WHU	Semi-Gloss White	(2) 13W Quad Tube 4-Pin	12 3/8"	11 3/8"	3 1/8"	(1)-2 Lt. Electronic	120V/277V
40602SBU	Satin Brass	(2) 13W Quad Tube 4-Pin	12 3/8"	11 3/8"	3 1/8"	(1)-2 Lt. Electronic	120V/277V

Features

- Diffuser:** 5/16" thick clear glass with perforated pattern ceramic coating inside. Removable by removing (2) knobs and sliding diffuser out of holder bracket.
- Screen:** (2) Die-formed 20 ga. perforated steel, semi-gloss white finish.
- Ballast:** Rated Class "P". See chart for electrical specifications.
- Backplate:** Die-formed 20 ga. steel, matte white finish
- Holder Bracket:** Extruded aluminum, see above for finishes.

Lamping

Compact Fluorescent: 13W Quad Tube 4-Pin, G24q-1 base

General Electric	Osram/Sylvania	Phillips
F13 DBX/SPX*/4P	CF13DD/E/*	PL-C13W/*/4p

*Manufacturers' color temperature designation.

Mounting

Fixture is provided with a mounting plate suitable for direct mounting to most outlet boxes or directly to wall over an outlet box.

Electrical

Lampholders: Compact Fluorescent: 4-pin, G24q-1 base

Ballasts:	Electronic120/277V
Total input Watts	30
Max.line Current (Amps)	0.25 / 0.11
Power Factor	>.97
Ballast Factor	>.98
THD	<10%
Min. Starting Temp.	-18°C (0°F)

Labels

UL listed suitable for damp locations, I.B.E.W.

Fixture conforms to Americans with Disabilities Act (ADA) Federal Regulations—Protruding Objects.

Job Information

Type:

Job Name:

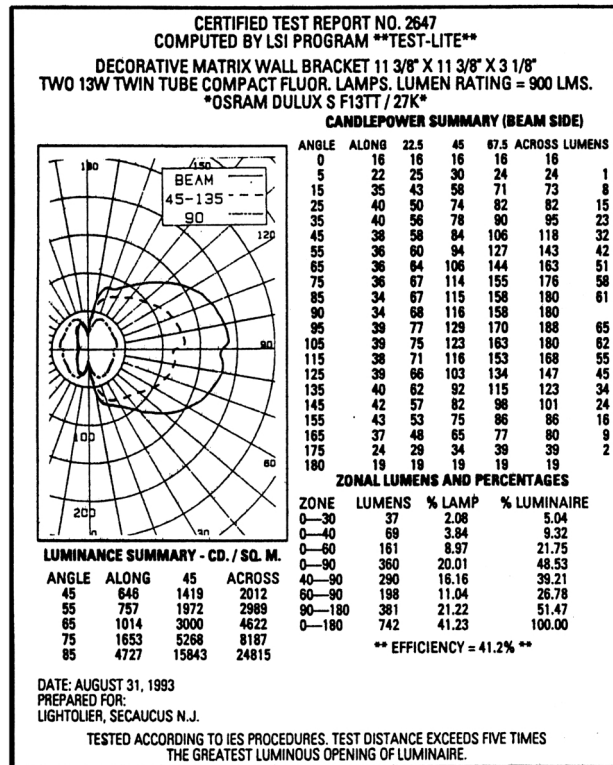
Cat. No.:

Lamp(s):

Notes:

Lightolier a Genlyte Thomas Company www.lightolier.com
631 Airport Road, Fall River, MA 02720 • (508) 679-8131 • Fax (508) 674-4710
We reserve the right to change details of design, materials and finish.
© 2002 Genlyte Thomas Group LLC (Lightolier Division) • A0902

LIGHTOLIER®



CORRIDOR LIGHTING Footcandles on Floor

	1'	2'	3'	4'	5'	6'	7'
10'	0.6	0.6	0.6	0.6	0.6	0.6	0.6
9'	0.7	0.7	0.7	0.7	0.7	0.7	0.7
8'	0.8	0.8	0.9	0.9	0.9	0.8	0.8
7'	0.9	1.0	1.0	1.0	1.0	1.0	0.9
6'	1.1	1.2	1.2	1.2	1.2	1.2	1.1
5'	1.3	1.4	1.5	1.5	1.4	1.3	1.3
4'	1.5	1.7	1.7	1.7	1.6	1.6	1.5
3'	1.8	2.0	2.1	2.0	1.9	1.8	1.6
2'	2.0	2.4	2.4	2.2	2.1	1.9	1.7
1'	2.2	2.6	2.5	2.4	2.2	2.0	1.8
0'	2.2	2.7	2.6	2.4	2.3	2.1	1.9
Luminaire							

Footcandles values are initial.
Luminaire mounted 6'6" above floor.
Corridor is 8' wide by 8' high.
Room Reflectances: 80% Ceiling, 50% Walls, 20% Floor.
For multiple luminaires add together footcandles contributed by
each luminaire at point(s) desired.

Job Information

Type:

Lightolier a Genlyte Thomas Company
631 Airport Road, Fall River, MA 02720 • (508) 679-8131 • Fax (508) 674-4710
We reserve the right to change details of design, materials and finish.
© 2002 Genlyte Thomas Group LLC (Lightolier Division) • A0902

LIGHTOLIER®