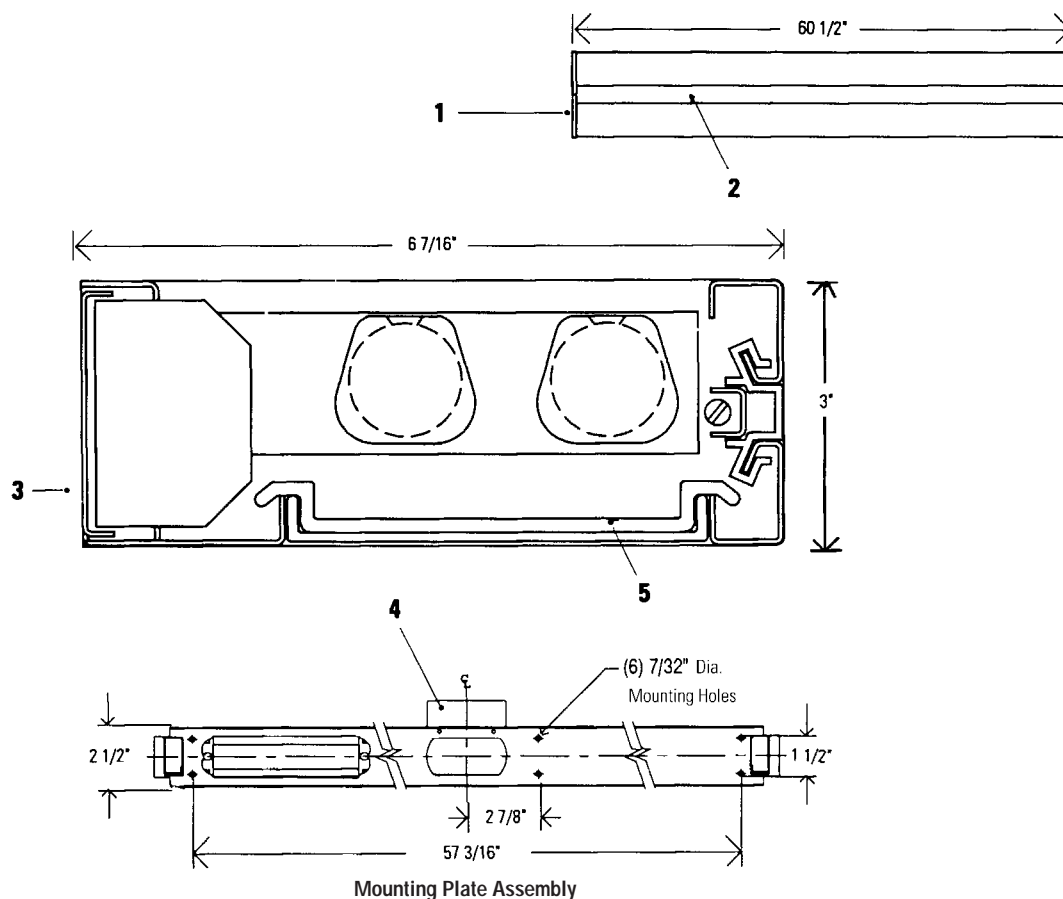




# Decorative Lytestream® 5405

Page 1 of 2

Wall Mounted Fluorescent 2 Lt.40W T8



Catalog No.	Finish	Lamps	Length	Width (extension)	Height
5405WHU	White	(2) 40W T8	60 1/2"	6 7/16"	3"
5405PCU	Polished Chrome	Fluorescent			
5405PBU	Polished Brass				

## Features

- 1. End Caps:** Die-cast aluminum alloy.
- 2. Luminous Strip:** White translucent acrylic.
- 3. Mounting Plate:** Die Formed, 18 ga. steel.
- 4. Junction Box Cover:** (Removable) for use with 4" or 3 1/2" octagonal junction box. Not required for horizontally mounted switchbox. Semi-gloss white.
- 5. Diffuser:** One-Piece, translucent white 100% virgin acrylic.

Fixtures are rated for connection to 60°C building wire. Therefore, they can be used for either old or new construction.

## Electrical

**Ballast:** Rapid Start, Electronic 120V

Total Input Watts	73
Max.Line Current (Amps)	0.61
Power Factor	.99
Ballast Factor	0.87
THD	<10%
Min. Starting Temp.	50°

## Mounting

Horizontally to wall using six 7/32" diameter mounting holes.

**Note:** Fixture is intended for horizontal mounting only.

## Finish

All painted surfaces, baked enamel.

## Labels

UL Listed, suitable for Damp Locations.

## Job Information

Type:

Job Name:

Cat. No.:

Lamp(s):

Notes:

Lightolier a Genlyte Thomas Company  
631 Airport Road, Fall River, MA 02720 • (508) 679-8131 • Fax (508) 674-4710  
We reserve the right to change details of design, materials and finish.  
© 2002 Genlyte Thomas Group LLC (Lightolier Division) • A0902

www.lightolier.com

LIGHTOLIER®