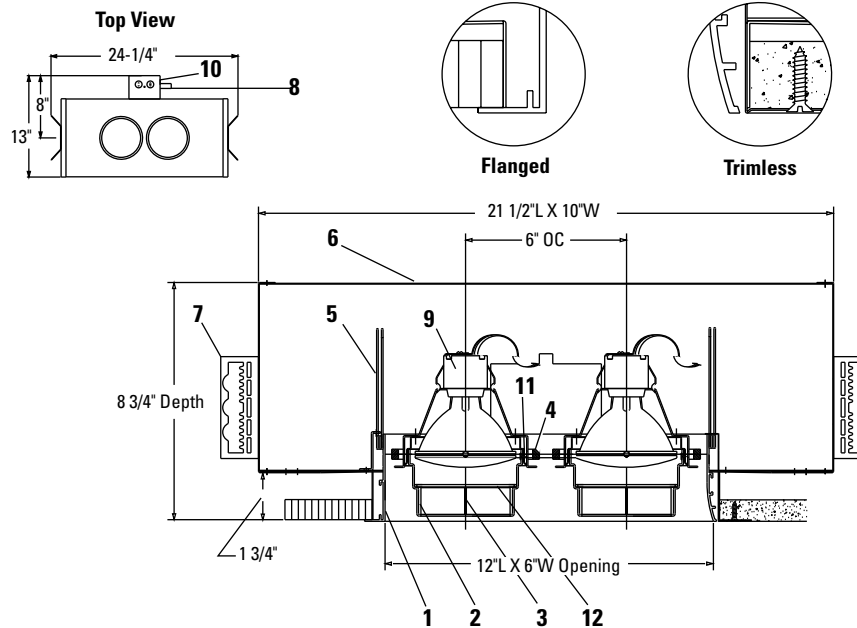


# Calculite® ProSpec® Linear Downlight **PA2P3075**

Page 1 of 2

2 Light PAR 30 Series A



PA2P3075BL = (Flanged) Black/White  
PA2P3075WL = (Flanged) White

PA2P3075BTL = (Trimless) Black  
PA2P3075WTL = (Trimless) White

Ceiling Cutout: 13 1/16" L x 7 3/16" W

## Ordering Information: PAR 30 Series A

Cat. No.	Lamp	Ceiling Trim	Aperture Finish
PA2P3075BL	(2) 75W PAR 30*	Overlap	Black with White Flange
PA2P3075WL	(2) 75W PAR 30*	Overlap	White with White Flange
PA2P3075BTL	(2) 75W PAR 30*	Trimless	Black
PA2P3075WTL	(2) 75W PAR 30*	Trimless	White

\*short neck only

## Features

- Aperture Frame:** Provides clean support for lamp holders and overlapping flange or trimless installation. Extruded aluminum. Rigidly welded together on all corners.
- Media Cartridge:** Allows convenient loading and removal of up to two accessories. Easily installed and removed for lamping with a simple twisting motion. Constructed of die formed aluminum.
- Cross Blade Louver:** Extruded aluminum. 1" deep, provides additional shielding and can be easily removed.
- Adjustable Ring:** Allows 360° horizontal and min. 35°, max. 45° (on length); 30° (on width) adjustment.
- Tortionite Spring:** For easy installation of aperture frame.
- Housing:** Die formed 22 ga. steel. Finish: Black.
- Mounting Brackets:** Adjustable vertically from outside of housing.
- Thermal Protector:** Meets NEC and UL & CSA requirements.
- Lampholder:** Porcelain medium based; nickel plated screw shell. Prewired with #18 SF-1 leads to junction box.
- Junction Box:** 14 ga. steel, 4 x 3 1/2 x 2" box. Allows inspection from below.
- Lamp and Accessory Support:** .032" steel, flared for easy entry of Media Cartridge.
- Lens Retaining Ring:** .093" spring steel rod. Holds accessories in place.

## Electrical

UL/cUL listed for through branch circuit wiring with maximum of (8) No. 12 AWG, 90°C.

## Finish

All painted finishes are powder coated baked enamel.

## Options & Accessories

**Accessories:** 3 3/4" dia. series, filters, lenses, screens, and louvers. (2) max.

## Labels

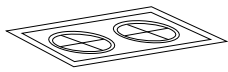
UL/cUL (Suitable for Damp Location), I B E W

## US Patent Pending

Job Information	Type:
Job Name:	
Cat. No.:	
Lamp(s):	
Notes:	

**Lightolier** a Genlyte Thomas Company  
631 Airport Road, Fall River, MA 02720 • (508) 679-8131 • Fax (508) 674-4710  
We reserve the right to change details of design, materials and finish.  
© 2002 Genlyte Thomas Group LLC (Lightolier Division) • A0902

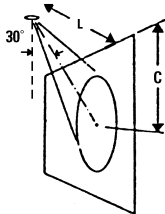
**LIGHTOLIER**

**Lighting Performance Data**

	Narrow				Medium				Wide			
	50W PAR30 NSP (T-H)		75W PAR30 NSP (T-H)		50W PAR30 NFL (T-H)		75W PAR30 NFL (T-H)		50W PAR30 FL (T-H)		75W PAR30 FL (T-H)	
FOOTCANDLES (On Beam Center At 6') ▶	181		291		49		83		31		50	
BEAM SPREAD (To 50% Max. CP)	12"		12"		32"		32"		42"		42"	
MAX. CANDLEPOWER (Candelas)	6,500		10,500		1,750		3,000		1,100		1,800	
RATED LIFE (Hours)	2,000		2,000		2,000		2,000		2,000		2,000	
<b>0° AIMING ANGLE</b> Illumination on Horizontal Plane 	D	FC	L	W	D	FC	L	W	D	FC	L	W
	6'	181	1.3'	1.3'	8'	164	1.7'	1.7'	4'	109	2.3'	2.3'
	8'	102	1.7'	1.7'	12'	73	2.5'	2.5'	6'	49	3.4'	3.4'
	10'	65	2.1'	2.1'	16'	41	3.4'	3.4'	8'	27	4.6'	4.6'
<b>30° AIMING ANGLE</b> Illumination on Horizontal Plane 	D	FC	L	W	D	FC	L	W	D	FC	L	W
	5'	169	1.4'	1.2'	7'	139	2.0'	1.7'	3'	126	2.4'	2.0'
	7'	86	2.0'	1.7'	10'	68	2.8'	2.4'	5'	45	3.9'	3.3'
	9'	52	2.5'	2.2'	13'	40	3.7'	3.2'	7'	23	5.5'	4.6'
<b>30° AIMING ANGLE</b> Illumination on Vertical Plane 	D	FC	L	W	D	FC	L	W	D	FC	L	W
	2'	203	1.7'	0.8'	3'	146	2.6'	1.3'	1'	219	3.0'	1.1'
	3'	90	2.6'	1.3'	4'	82	3.5'	1.7'	2'	55	6.1'	2.3'
	4'	51	3.5'	1.7'	5'	53	4.3'	2.1'	3'	24	9.1'	3.4'

Data are based on bare lamp photometrics.

FC is initial footcandles at center of beam. L and W are to the point that the candlepower drops 50% of maximum.

**Beam Center Location**

Distance D (ft.)	1	2	3	4	5	6	7	8	9	10
Distance C (ft.)	1.7	3.5	5.2	6.9	8.7	10.4	12.1	13.8	15.6	17.3

This chart locates the distance (C) to the center of the light beam for various distances (D) when the lamp is aimed 30° from vertical, the preferred aiming angle for lighting pictures on a wall.

**Job Information****Type:**

Lightolier a Genlyte Thomas Company

[www.lightolier.com](http://www.lightolier.com)

631 Airport Road, Fall River, MA 02720 • (508) 679-8131 • Fax (508) 674-4710

We reserve the right to change details of design, materials and finish.

© 2002 Genlyte Thomas Group LLC (Lightolier Division) • A0902

**LIGHTOLIER®**