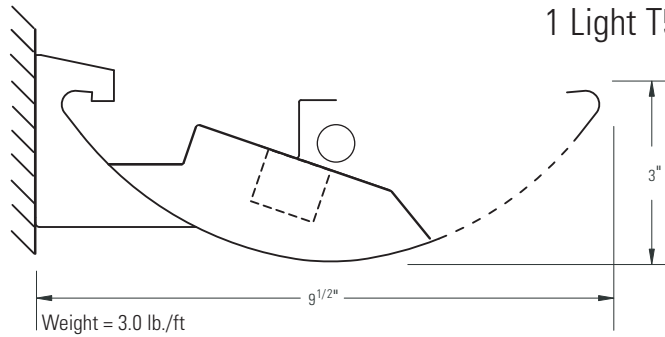


# Lighting Systems **Baselyte-BSL20**



## Ordering Information

Family	Distribution	Lamp Type	No. of Lamps	Housing	Module Length	Wiring	Voltage	Ballast	Finish
<b>BSL</b>	<b>8</b> 8 = Wall Mount	<b>H</b> H = T5 HO	<b>01</b> 01 = 1 Light	<b>LN</b> LN = Perforated	<b>04</b> = 4' <b>08</b> = 8' <b>12</b> = 12'	<b>1</b> = 1cct. <b>3</b> = 1cct. w/EC/NL <b>5</b> = 1cct. w/EM Battery <b>7</b> = 1cct. w/Dimming <b>8</b> = 1cct. w/1cct. Thru wire  <b>Note:</b> Please consult wiring section of spec sheets for more wiring options.	<b>D</b> = Dual 120V & 277V <b>1</b> = 120V <b>2</b> = 277V  <b>Note:</b> Option 'D' is standard. Voltage options 1 and 2 are only available with EM Battery and Dimming wiring options.	<b>E</b> = Standard <10% THD <b>F</b> = Standard <10% THD w/fusing	<b>C</b> = Custom Color <b>W</b> = Standard White

## Specifications

### Features

- Housing: die-formed 20ga. cold rolled steel
- End Set: die-cast metal with baked powder coat finish
- Lamping: one T5 HO lamp
- Configuration: 4', 8' and 12' module lengths or continuous rows
- Ballasts: electronic 120V or 277V

### Finish

High-quality white powder coat with textured matte finish. Custom colors available. Consult factory.

### Mounting

Flexible mounting locations.

### Electrical

All luminaires are factory pre-wired to module ends with quick-wire connectors.

### Joints & Intersections

Self-aligning joining system with hands-free pre-joining wire access.

### Labels

UL, CSA standards.

## Ordering Instructions

### Individual Fixtures

- Determine the number of individual modules required
- Order one end set per module
- Order one non-power mount per module
- Order one power mount per module

### Continuous Rows\*

- Determine run length
- Order the appropriate number and length of modules for complete run
- Order one end set for each run
- Order one non-power mount for each module
- Order one power mount per run
- Order one joiner per module minus one (e.g. 3 modules requires 2 joiners)

\*Note: Some runs may require additional power mounts. Please see the 'Run Configuration' table on the next page for more details.

### Job Information

### Type:

**Job Name:**

**Cat. No.:**

**Lamp(s):**

**Notes:**

Lightolier a Genlyte Company

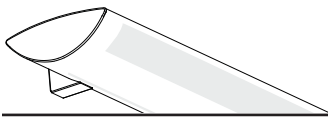
www.lightolier.com

631 Airport Road, Fall River, MA 02720 • (508) 679-8131 • Fax (508) 674-4710

We reserve the right to change details of design, materials and finish.

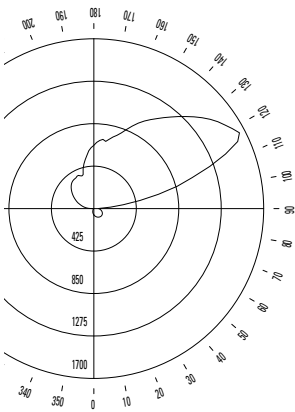
© 2005 Genlyte Group LLC • 0205 Rev.1

**LIGHTOLIER**



## Performance

### Candlepower Curve



**Report No:** 9900157  
**Lamps:** F54T5  
**Lumens per Lamp:** 4650  
**Efficiency:** 71.5%  
**Up:** 93.3% **Down:** 6.7%

### Candlepower Summary

ZONE DEG.	CANDLEPOWER				
	0	45	90	135	180
180	633	633	633	633	633
175	685	673	631	599	581
165	742	678	612	478	414
155	912	740	575	338	367
145	1100	846	527	337	352
135	1303	946	469	309	321
125	1516	1040	401	266	264
115	1589	1113	305	199	200
105	864	921	171	129	136
95	168	195	31	60	71
90	48	23	1	9	15
85	60	31	3	3	3
75	79	46	7	3	3
65	93	61	12	4	4
55	102	72	22	7	5
45	105	79	34	10	7
35	102	82	45	19	13
25	94	80	53	32	24
15	83	75	59	45	40
5	70	68	62	57	55
0	63	63	63	63	63

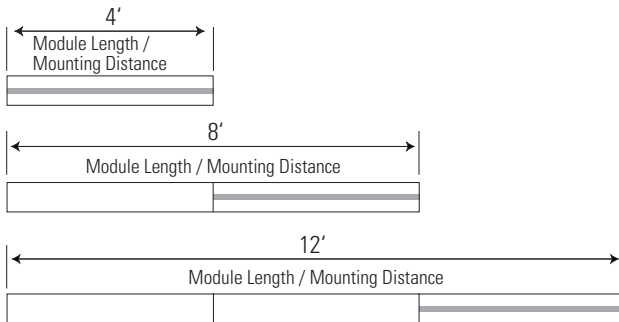
### Coefficients of Utilization

	% EFFECTIVE CEILING CAVITY REFLECTANCE								
	80			70			50		
	% WALL REFLECTANCE								
	50	30	10	50	30	10	50	30	10
0	69	69	69	60	60	60	42	42	42
1	60	57	54	51	49	47	36	35	34
2	52	48	44	45	41	39	32	29	28
3	45	40	36	39	35	32	28	25	23
4	40	35	31	34	30	27	24	22	19
5	35	30	26	30	26	23	22	19	16
6	31	26	22	27	23	19	19	16	14
7	28	23	19	24	20	17	17	14	12
8	25	20	16	22	17	14	15	13	10
9	23	18	14	20	15	13	14	11	9
10	21	16	13	18	14	11	13	10	8

### Zonal Lumen Summary

ZONE	LUMENS	%BARE LAMP	%LUMINAIRE
0-90	222	4.8	6.7
90-180	3102	66.7	93.3
0-180	3324	71.5	100.0

## Module Lengths & Mounting Distances



**Note:** Shaded area indicates locations of emergency sections (emergency wiring controls all lamps or optional battery pack controls one or two lamps).

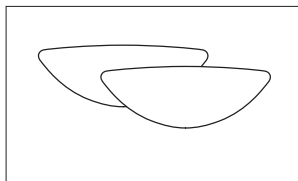
## Run Configuration

Run Length	4' Module	8' Module	12' Module	Joiner	End Set	Mount	Power Mount*
4' run	1				1	1	1
8' run		1			1	1	1
12' run			1		1	1	1
16' run		2		1	1	2	1
20' run		1	1	1	1	2	1
24' run			2	1	1	2	1
28' run		2	1	2	1	3	1
32' run		1	2	2	1	3	1

**\*Note:** Additional power mounts may be required for some runs with T5 HO lamping options, longer runs, and runs with wiring options that are more complex. Please consult factory for assistance.

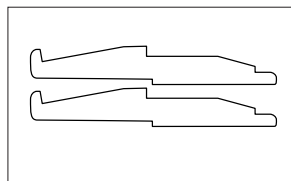
## System Components & Accessories

### End Set



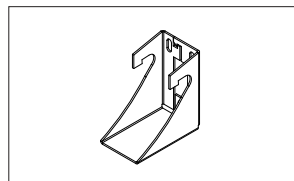
**BSLEWW** = wall mount standard white

### Joiner



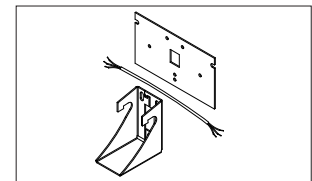
**BSLJW** = wall mount joiner

### Non-Power Wall Mount



**BSLWN** = non-power wall mount

### Power Wall Mount



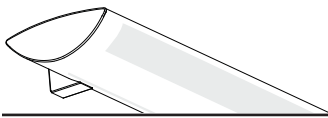
**BSLWP1** = 1-power mount  
**BSLWP2** = 2-power mount

## Job Information

## Type:

**Lightolier** a Genlyte Company [www.lightolier.com](http://www.lightolier.com)  
 631 Airport Road, Fall River, MA 02720 • (508) 679-8131 • Fax (508) 674-4710  
 We reserve the right to change details of design, materials and finish.  
 © 2005 Genlyte Group LLC • 0205 Rev.1

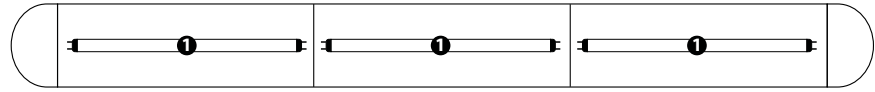
**LIGHTOLIER®**



## Wiring Options: 1 Circuit

### 1 Circuit

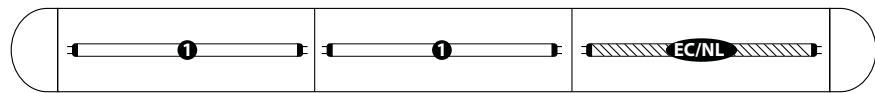
- Type 1:** 1cct.
- Type 8:** 1cct. w/1cct. thru wire
- Type H:** 1cct. w/2cct. thru wire
- Type 7:** 1cct. w/dimming



All lamps wired on one circuit.

### 1 Circuit with Emergency Circuit/Night Light (EC/NL)

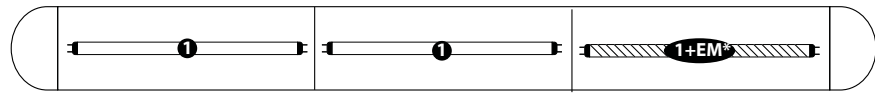
- Type 3:** 1cct. w/EC/NL



One 4' section in a one circuit fixture to be wired on a separate thru circuit. Leads for both normal circuit and EC/NL circuit wired to fixture ends. All lamps in EC/NL section to be wired together.

### 1 Circuit with Emergency Battery Pack (EM)

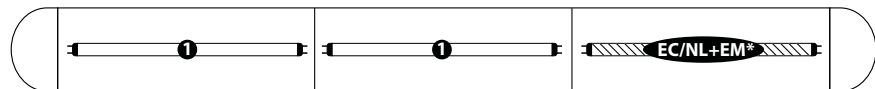
- Type 5:** Chloride standard  
CTP700
- Type M:** Bodine standard  
LP550
- Type E:** Chloride high performance  
CTP1300
- Type P:** Bodine high performance  
LP600



All lamps wired on one circuit, plus a battery pack is wired to one lamp. A hot lead is connected to the battery pack and would function as a 'trigger' wire when connected to a constant hot by installer. Leads for both normal circuit and battery pack are wired to fixture ends.

### 1 Circuit with Emergency Circuit/Night Light and Emergency Battery Pack

- Type J:** Chloride standard  
CTP700



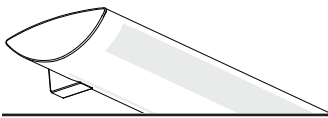
One 4' section in a one circuit fixture to be wired on a separate thru circuit, in addition, a battery pack is wired to one lamp. Installer can connect 'trigger' wire to EC hot lead if controlled together or wire separately if controlled independently. Leads for normal circuit, EC/NL circuit and EM wired to fixture ends. All lamps in EC/NL section to be wired together.

#### Job Information

#### Type:

Lightolier a Genlyte Company [www.lightolier.com](http://www.lightolier.com)  
 631 Airport Road, Fall River, MA 02720 • (508) 679-8131 • Fax (508) 674-4710  
 We reserve the right to change details of design, materials and finish.  
 © 2005 Genlyte Group LLC • 0205 Rev.1

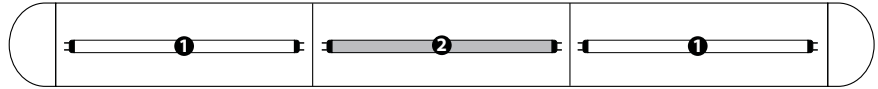
# LIGHTOLIER®



## Wiring Options: 2 Circuit A/B Switching (alternate 4' sections)

### 2 Circuit A/B Switching (alternate 4' sections)

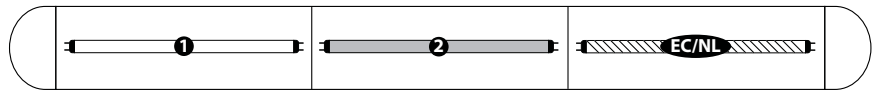
- Type B:** 2cct.
- Type A:** 2cct. w/1cct. thru wire
- Type S:** 2cct. w/2cct. thru wire



Fixture wired for two circuit. Lamps wired for A/B switching in alternate 4' sections.

### 2 Circuit A/B Switching (alternate 4' sections) with Emergency Circuit/Night Light (EC/NL)

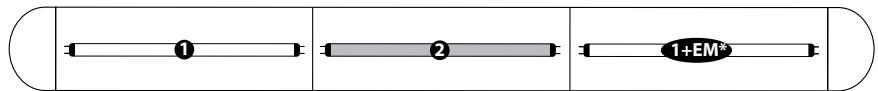
- Type C:** 2cct. w/EC/NL



One 4' section in a two circuit fixture (A/B switching) to be wired on a separate thru circuit. Leads for both normal circuit and EC/NL circuit wired to fixture ends.

### 2 Circuit A/B Switching (alternate 4' sections) with Emergency Battery Pack (EM)

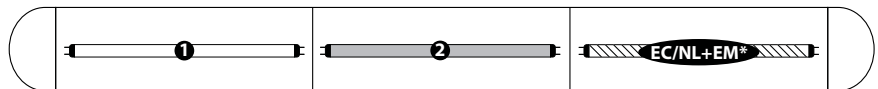
- Type D:** Chloride standard  
CTP700
- Type O:** Bodine standard  
LP550
- Type G:** Chloride high performance  
CTP1300
- Type R:** Bodine high performance  
LP600



Fixture wired for two circuits (A/B switching), plus a battery pack is wired to one lamp. A hot lead is connected to the battery pack and would act as a 'trigger' wire when connected to a constant hot by installer. Leads for both normal circuit and battery pack are wired to fixture ends.

### 2 Circuit A/B Switching (alternate 4' sections) with Emergency Circuit/Night Light and Emergency Battery Pack

- Type L:** Chloride standard  
CTP700



One 4' section in a two circuit fixture (A/B switching) to be wired on a separate thru circuit, in addition, a battery pack is wired to one lamp. Installer can connect 'trigger' wire to EC hot lead if controlled together or wired separately if controlled independently. Leads for normal circuit, EC/NL circuit and battery pack are wired to fixture ends. All lamps in EC/NL module to be wired together.

#### Job Information

#### Type:

**Lightolier** a Genlyte Company [www.lightolier.com](http://www.lightolier.com)  
 631 Airport Road, Fall River, MA 02720 • (508) 679-8131 • Fax (508) 674-4710  
 We reserve the right to change details of design, materials and finish.  
 © 2005 Genlyte Group LLC • 0205 Rev.1

# LIGHTOLIER®