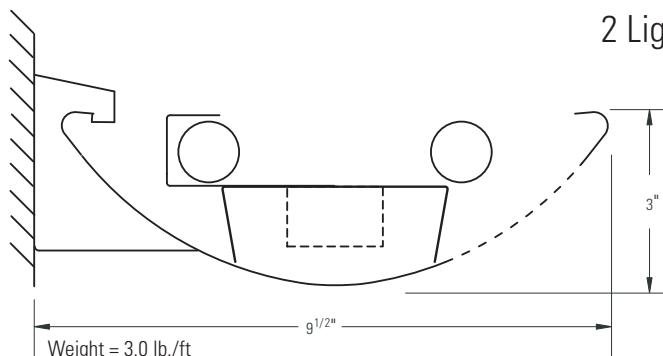


# Lighting Systems **Baselyte-BSL19**

Page 1 of 5

2 Light T8 Wall Mount Semi-Indirect



## Ordering Information

Family	Distribution	Lamp Type	No. of Lamps	Housing	Module Length	Wiring	Voltage	Ballast	Finish
<b>BSL</b>	<b>8</b>	<b>T</b>	<b>02</b>	<b>LN</b>					
	8 = Wall Mount	T = T8	02 = 2 Light	LN = Perforated	04 = 4' 08 = 8' 12 = 12'	1 = 1cct. 2 = 2cct. 3 = 1cct. w/EC/NL 4 = 2cct. w/EC/NL 5 = 1cct. w/EM Battery 6 = 2cct. w/EM Battery 7 = 1cct. w/Dimming 8 = 1cct. w/1cct. Thru wire 9 = 2cct. w/1cct. Thru wire <b>Note:</b> Please consult wiring section of spec sheets for more wiring options.	1 = 120V 2 = 277V	E = Standard <20% THD F = Standard <20% THD w/fusing G = <10% THD, Instant Start H = <10% THD, Instant Start w/fusing J = <10% THD, Program Start K = <10% THD, Program Start w/fusing	C = Custom Color W = Standard White

## Specifications

### Features

1. Housing: die-formed 20ga. cold rolled steel
2. End Set: die-cast metal with baked powder coat finish
3. Lamping: two T8 lamps
4. Configuration: 4', 8' and 12' module lengths or continuous rows
5. Ballasts: electronic 120V or 277V

### Finish

High-quality white powder coat with textured matte finish.  
Custom colors available. Consult factory.

### Mounting

Flexible mounting locations.

### Electrical

All luminaires are factory pre-wired to module ends with quick-wire connectors.

### Joints & Intersections

Self-aligning joining system with hands-free pre-joining wire access.

### Labels

UL, CSA standards.

## Ordering Instructions

### Individual Fixtures

1. Determine the number of individual modules required
2. Order one end set per module
3. Order one non-power mount per module
4. Order one power mount per module

### Continuous Rows\*

1. Determine run length
2. Order the appropriate number and length of modules for complete run
3. Order one end set for each run
4. Order one non-power mount for each module
5. Order one power mount per run
6. Order one joiner per module minus one (e.g. 3 modules requires 2 joiners)

\*Note: Some runs may require additional power mounts. Please see the 'Run Configuration' table on the next page for more details.

### Job Information

### Type:

**Job Name:**

**Cat. No.:**

**Lamp(s):**

**Notes:**

Lightolier a Genlyte Company

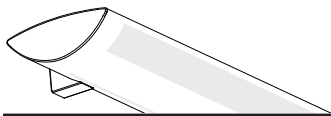
www.lightolier.com

631 Airport Road, Fall River, MA 02720 • (508) 679-8131 • Fax (508) 674-4710

We reserve the right to change details of design, materials and finish.

© 2005 Genlyte Group LLC • 0205 Rev.1

**LIGHTOLIER**



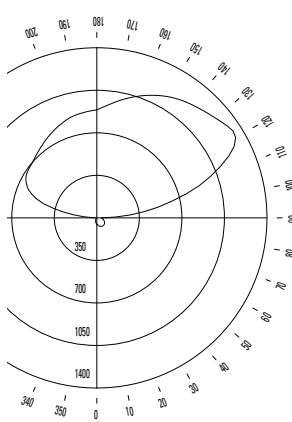
# Lighting Systems **Baselyte-BSL19**

Page 2 of 5

2 Light T8 Wall Mount Semi-Indirect

## Performance

### Candlepower Curve



**Report No:** 9900043  
**Lamps:** F32T8  
**Lumens per Lamp:** 2950  
**Efficiency:** 69.8%  
**Up:** 95.6% **Down:** 4.4%

### Candlepower Summary

ZONE DEG.	CANDLEPOWER				
	0	45	90	135	180
180	889	889	889	889	889
175	928	915	884	880	879
165	1023	965	856	851	854
155	1113	1004	798	800	807
145	1188	1017	719	728	758
135	1245	1002	613	651	714
125	1314	993	488	577	688
115	1196	974	343	522	636
105	761	700	194	413	457
95	276	231	47	115	110
90	38	20	2	4	3
85	42	23	4	4	3
75	56	35	8	4	3
65	68	47	11	5	4
55	77	57	19	8	6
45	82	63	27	11	8
35	82	66	36	19	14
25	77	66	43	29	24
15	68	61	48	39	35
5	57	55	51	47	46
0	51	51	51	51	51

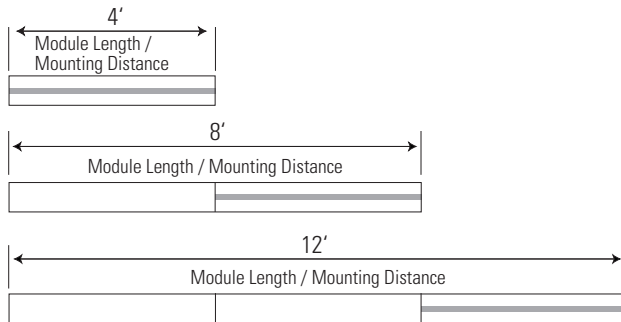
### Coefficients of Utilization

	% EFFECTIVE CEILING CAVITY REFLECTANCE								
	80			70			50		
	% WALL REFLECTANCE								
	50	30	10	50	30	10	50	30	10
0	67	67	67	58	58	58	40	40	40
1	58	56	53	50	48	46	35	34	32
2	51	47	43	44	40	38	30	28	27
3	44	40	36	38	34	31	27	24	22
4	39	34	30	34	29	26	23	21	19
5	34	29	25	30	25	22	21	18	16
6	31	25	22	26	22	19	18	16	13
7	27	22	19	24	19	16	17	14	12
8	25	20	16	21	17	14	15	12	10
9	22	17	14	19	15	12	13	11	9
10	20	15	12	17	13	11	12	10	8

### Zonal Lumen Summary

ZONE	LUMENS	% BARE LAMP	% LUMINAIRE
0-90	182.5	3.1	4.4
90-180	3955.5	67.0	95.6
0-180	4138	70.1	100.0

## Module Lengths & Mounting Distances



**Note:** Shaded area indicates locations of emergency sections (emergency wiring controls all lamps or optional battery pack controls one or two lamps).

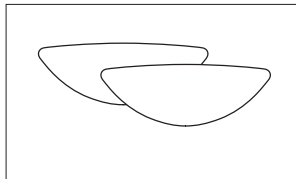
## Run Configuration

Run Length	4' Module	8' Module	12' Module	Joiner	End Set	Mount	Power Mount*
4' run	1				1	1	1
8' run		1			1	1	1
12' run			1		1	1	1
16' run		2		1	1	2	1
20' run		1	1	1	1	2	1
24' run			2	1	1	2	1
28' run		2	1	2	1	3	1
32' run		1	2	2	1	3	1

**\*Note:** Additional power mounts may be required for some runs with T5 HO lamping options, longer runs, and runs with wiring options that are more complex. Please consult factory for assistance.

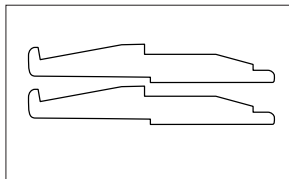
## System Components & Accessories

### End Set



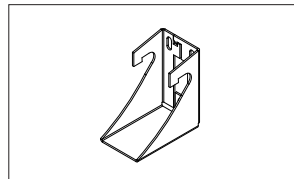
**BSLEWW** = wall mount standard white

### Joiner



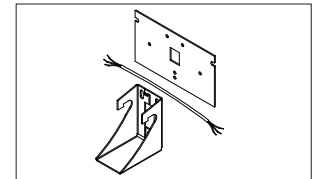
**BSLJW** = wall mount joiner

### Non-Power Wall Mount



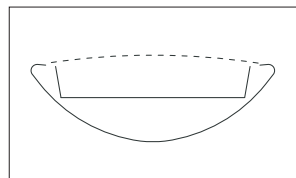
**BSLWN** = non-power wall mount

### Power Wall Mount



**BSLWP1** = 1-power mount  
**BSLWP2** = 2-power mount

### Dust Cover



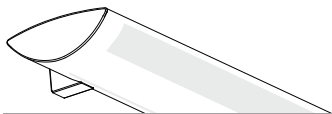
**BSLDCW** = 4' wall mount dust cover

## Job Information

## Type:

**Lightolier** a Genlyte Company [www.lightolier.com](http://www.lightolier.com)  
 631 Airport Road, Fall River, MA 02720 • (508) 679-8131 • Fax (508) 674-4710  
 We reserve the right to change details of design, materials and finish.  
 © 2005 Genlyte Group LLC • 0205 Rev.1

**LIGHTOLIER**



## Wiring Options: 1 Circuit

### 1 Circuit

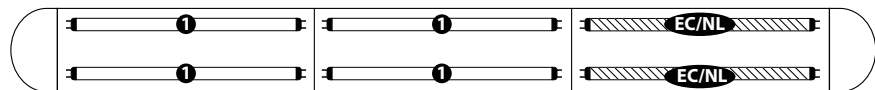
- ☐ **Type 1:** 1cct.
- ☐ **Type 8:** 1cct. w/1cct. thru wire
- ☐ **Type H:** 1cct. w/2cct. thru wire
- ☐ **Type 7:** 1cct. w/dimming



All lamps wired on one circuit.

### 1 Circuit with Emergency Circuit/Night Light (EC/NL)

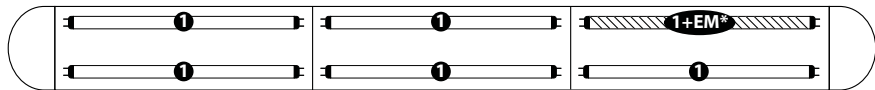
- ☐ **Type 3:** 1cct. w/EC/NL



One 4' section in a one circuit fixture to be wired on a separate thru circuit. Leads for both normal circuit and EC/NL circuit wired to fixture ends. All lamps in EC/NL section to be wired together.

### 1 Circuit with Emergency Battery Pack (EM)

- ☐ **Type 5:** Chloride standard C700A
- ☐ **Type M:** Bodine standard B70A
- ☐ **Type E:** Chloride high performance C1400
- ☐ **Type P:** Bodine high performance B50

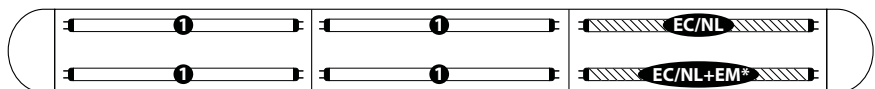


All lamps wired on one circuit, plus a battery pack is wired to one lamp. A hot lead is connected to the battery pack and would function as a 'trigger' wire when connected to a constant hot by installer. Leads for both normal circuit and battery pack are wired to fixture ends.

*\*Note: Multi-lamp battery packs are also available.*

### 1 Circuit with Emergency Circuit/Night Light and Emergency Battery Pack

- ☐ **Type J:** Chloride standard C700A



One 4' section in a one circuit fixture to be wired on a separate thru circuit, in addition, a battery pack is wired to one lamp. Installer can connect 'trigger' wire to EC hot lead if controlled together or wire separately if controlled independently. Leads for normal circuit, EC/NL and EM wired to fixture ends. All lamps in EC/NL section to be wired together.

*\*Note: Multi-lamp battery packs are also available.*

## Job Information

## Type:

**Lightolier** a Genlyte Company

[www.lightolier.com](http://www.lightolier.com)

631 Airport Road, Fall River, MA 02720 • (508) 679-8131 • Fax (508) 674-4710

We reserve the right to change details of design, materials and finish.

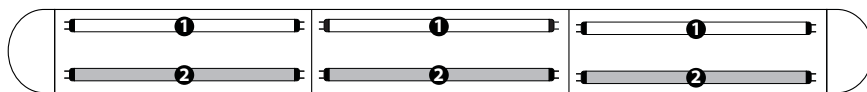
© 2005 Genlyte Group LLC • 0205 Rev.1



## Wiring Options: 2 Circuit Left/Right Switching

### 2 Circuit Left/Right Switching

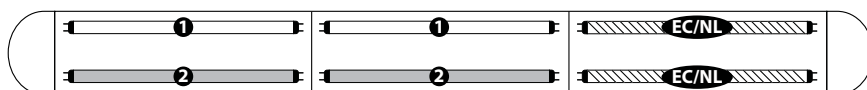
- ☐ **Type 2:** 2cct.
- ☐ **Type 9:** 2cct. w/1cct. thru wire
- ☐ **Type I:** 2cct. w/2cct. thru wire



Fixture wired for two circuit. Lamps wired for left/right switching.

### 2 Circuit Left/Right Switching with Emergency Circuit/Night Light (EC/NL)

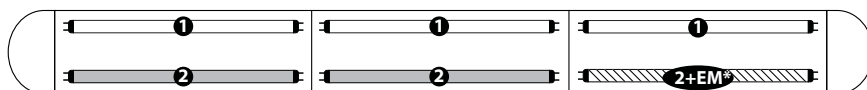
- ☐ **Type 4:** 2cct. w/EC/NL



One 4' section in two circuit fixture (left/right switching) to be wired on a separate thru circuit. Leads for both normal circuit and EC/NL circuit wired to fixture ends. All lamps in EC/NL section to be wired together.

### 2 Circuit Left/Right Switching with Emergency Battery Pack (EM)

- ☐ **Type 6:** Chloride standard C700A
- ☐ **Type N:** Bodine standard B70A
- ☐ **Type F:** Chloride high performance C1400
- ☐ **Type Q:** Bodine high performance B50

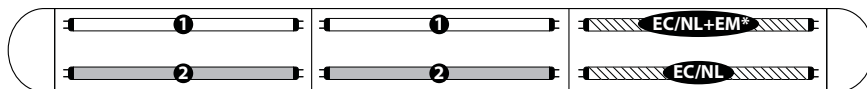


Fixture wired for two circuits (left/right switching), plus a battery pack is wired to one lamp. A hot lead is connected to the battery pack and would act as a 'trigger' wire when connected to a constant hot by installer. Leads for both normal circuit and battery pack are wired to fixture ends.

*\*Note: Multi-lamp battery packs are also available.*

### 2 Circuit Left/Right Switching with Emergency Circuit/Night Light and Emergency Battery Pack

- ☐ **Type K:** Chloride standard (C700A for T8, CTP700 for T5 HO)



One 4' section in a two circuit fixture (left/right switching) to be wired on a separate thru circuit, in addition, a battery pack is wired to one lamp. Installer can connect 'trigger' wire to EC hot lead if controlled together or wired separately if controlled independently. Leads for normal circuit, EC/NL and battery pack are wired to fixture ends. All lamps in EC/NL section to be wired together.

*\*Note: Multi-lamp battery packs are also available.*

#### Job Information

#### Type:

Lightolier a Genlyte Company  
631 Airport Road, Fall River, MA 02720 • (508) 679-8131 • Fax (508) 674-4710  
We reserve the right to change details of design, materials and finish.  
© 2005 Genlyte Group LLC • 0205 Rev.1

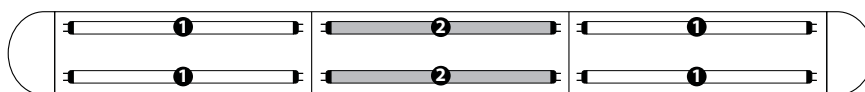
www.lightolier.com



## Wiring Options: 2 Circuit A/B Switching (alternate 4' sections)

### 2 Circuit A/B Switching (alternate 4' sections)

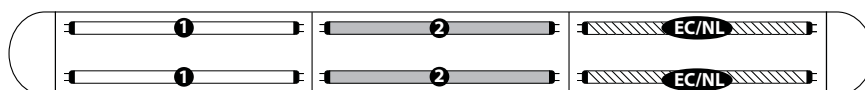
- ☐ **Type B:** 2cct. A/B
- ☐ **Type A:** 2cct. A/B w/1cct. thru wire
- ☐ **Type S:** 2cct. A/B w/2cct. thru wire



Fixture wired for two circuit. Lamps wired for A/B switching in alternate 4' sections.

### 2 Circuit A/B Switching (alternate 4' sections) with Emergency Circuit/Night Light (EC/NL)

- ☐ **Type C:** 2cct. w/EC/NL



One 4' section in a two circuit fixture (A/B switching) to be wired on a separate thru circuit. Leads for both normal circuit and EC/NL circuit wired to fixture ends. All lamps in EC/NL section to be wired together.

### 2 Circuit A/B Switching (alternate 4' sections) with Emergency Battery Pack (EM)

- ☐ **Type D:** Chloride standard  
C700A
- ☐ **Type O:** Bodine standard  
B70A
- ☐ **Type G:** Chloride high performance  
C1400
- ☐ **Type R:** Bodine high performance  
B50

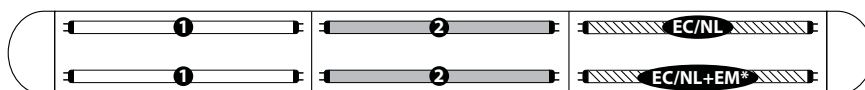


Fixture wired for two circuits (A/B switching), plus a battery pack is wired to one lamp. A hot lead is connected to the battery pack and would act as a 'trigger' wire when connected to a constant hot by installer. Leads for both normal circuit and battery pack are wired to fixture ends.

*\*Note: Multi-lamp battery packs are also available.*

### 2 Circuit A/B Switching (alternate 4' sections) with Emergency Circuit/Night Light and Emergency Battery Pack

- ☐ **Type L:** Chloride standard  
C700A



One 4' section in a two circuit fixture (A/B switching) to be wired on a separate thru circuit, in addition, a battery pack is wired to one lamp. Installer can connect 'trigger' wire to EC hot lead if controlled together or wired separately if controlled independently. Leads for normal circuit, EC/NL circuit and battery pack are wired to fixture ends. All lamps in EC/NL section to be wired together.

*\*Note: Multi-lamp battery packs are also available.*

## Job Information

## Type:

**Lightolier** a Genlyte Company

[www.lightolier.com](http://www.lightolier.com)

631 Airport Road, Fall River, MA 02720 • (508) 679-8131 • Fax (508) 674-4710

We reserve the right to change details of design, materials and finish.

© 2005 Genlyte Group LLC • 0205 Rev.1