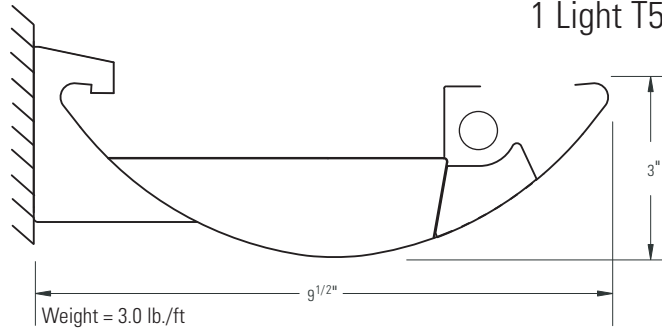


Lighting Systems **Baselyte-BSL10**

Page 1 of 4

1 Light T5 HO Wall Mount Direct/Indirect



Ordering Information

Family	Distribution	Lamp Type	No. of Lamps	Housing	Module Length	Wiring	Voltage	Ballast	Finish
BSL	8 8 = Wall Mount	H H = T5 HO	01 01 = 1 Light	CN CN = cutout w/baffles	04 = 4' 08 = 8' 12 = 12'	1 = 1cct. 3 = 1cct. w/EC/NL 5 = 1cct. w/EM Battery 7 = 1cct. w/Dimming 8 = 1cct. w/1cct. Thru wire Note: Please consult wiring section of spec sheets for more wiring options.	D = Dual 120V & 277V 1 = 120V 2 = 277V Note: Option 'D' is standard. Voltage options 1 and 2 are only available with EM Battery and Dimming wiring options.	E = Standard <10% THD F = Standard <10% THD w/fusing	C = Custom Color W = Standard White

Specifications

Features

- Housing: die-formed 20ga. cold rolled steel
- End Set: die-cast metal with baked powder coat finish
- Lamping: one T5 HO lamp
- Configuration: 4', 8' and 12' module lengths or continuous rows
- Ballasts: electronic 120V or 277V

Finish

High-quality white powder coat with textured matte finish. Custom colors available. Consult factory.

Mounting

Flexible mounting locations.

Electrical

All luminaires are factory pre-wired to module ends with quick-wire connectors.

Joints & Intersections

Self-aligning joining system with hands-free pre-joining wire access.

Labels

UL, CSA standards.

Ordering Instructions

Individual Fixtures

- Determine the number of individual modules required
- Order one end set per module
- Order one non-power mount per module
- Order one power mount per module

Continuous Rows*

- Determine run length
- Order the appropriate number and length of modules for complete run
- Order one end set for each run
- Order one non-power mount for each module
- Order one power mount per run
- Order one joiner per module minus one (e.g. 3 modules requires 2 joiners)

***Note:** Some runs may require additional power mounts. Please see the 'Run Configuration' table on the next page for more details.

Job Information

Type:

Job Name:

Cat. No.:

Lamp(s):

Notes:

Lightolier a Genlyte Company

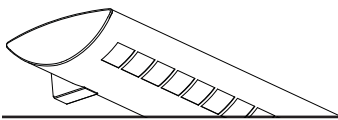
www.lightolier.com

631 Airport Road, Fall River, MA 02720 • (508) 679-8131 • Fax (508) 674-4710

We reserve the right to change details of design, materials and finish.

© 2005 Genlyte Group LLC • 0205 Rev.1

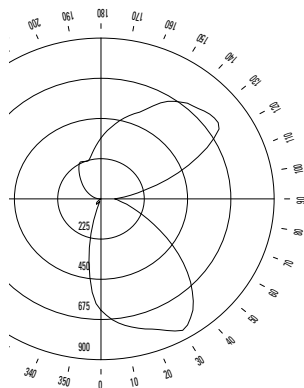
LIGHTOLIER



Lighting Systems **Baselyte-BSL10**

Performance

Candlepower Curve



Report No: 2101681
Lamps: F54T5
Lumens per Lamp: 4650
Efficiency: 62.3%
Up: 55.1% **Down:** 44.9%

Candlepower Summary

ZONE DEG.	CANDLEPOWER				
	0	45	90	135	180
180	341	341	341	341	341
175	385	371	339	310	298
165	469	426	329	250	231
155	554	475	311	211	230
145	667	531	284	210	200
135	715	584	249	175	148
125	744	579	206	125	105
115	556	553	159	81	70
105	300	332	101	43	42
95	121	117	31	17	19
90	71	61	2	4	6
85	91	78	12	1	1
75	154	141	40	1	1
65	270	276	80	3	1
55	456	455	178	28	7
45	659	619	284	38	33
35	812	690	395	29	34
25	813	699	491	117	15
15	749	707	572	337	201
5	679	669	619	563	525
0	623	623	623	623	623

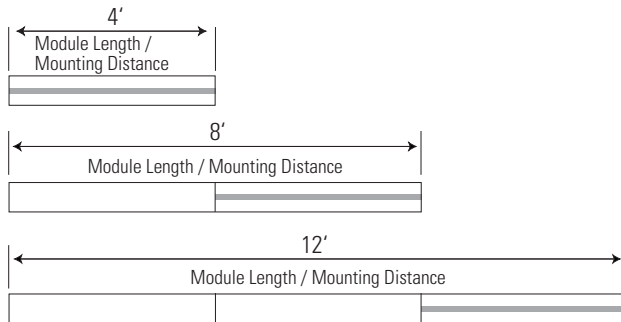
Coefficients of Utilization

ZONE	% EFFECTIVE CEILING CAVITY REFLECTANCE								
	80			70			50		
	% WALL REFLECTANCE								
	50	30	10	50	30	10	50	30	10
0	66	66	66	60	60	60	50	50	50
1	57	55	53	52	50	49	44	42	41
2	50	46	43	46	43	40	38	36	34
3	44	40	36	40	37	33	34	31	29
4	39	34	30	36	32	28	30	27	24
5	35	30	26	32	28	24	27	24	21
6	31	26	23	29	24	21	24	21	18
7	28	23	20	26	22	19	22	19	16
8	25	21	17	24	19	16	20	17	14
9	23	19	15	22	17	15	18	15	13
10	21	17	14	20	16	13	17	14	11

Zonal Lumen Summary

ZONE	LUMENS	%BARE LAMP	%LUMINAIRE
0-90	1300	28.0	44.8
90-180	1599	34.4	55.2
0-180	2899	62.3	100.0

Module Lengths & Mounting Distances



Note: Shaded area indicates locations of emergency sections (emergency wiring controls all lamps or optional battery pack controls one or two lamps).

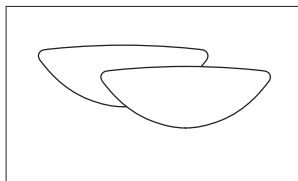
Run Configuration

Run Length	4' Module	8' Module	12' Module	Joiner	End Set	Mount	Power Mount*
4' run	1				1	1	1
8' run		1			1	1	1
12' run			1		1	1	1
16' run		2		1	1	2	1
20' run		1	1	1	1	2	1
24' run			2	1	1	2	1
28' run		2	1	2	1	3	1
32' run		1	2	2	1	3	1

***Note:** Additional power mounts may be required for some runs with T5 HO lamping options, longer runs, and runs with wiring options that are more complex. Please consult factory for assistance.

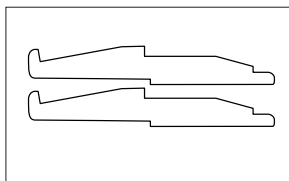
System Components & Accessories

End Set



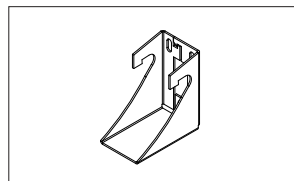
BSLEWW = wall mount standard white

Joiner



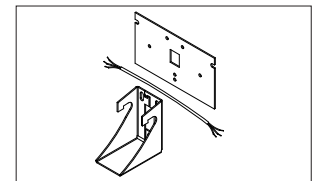
BSLJW = wall mount joiner

Non-Power Wall Mount



BSLWN = non-power wall mount

Power Wall Mount



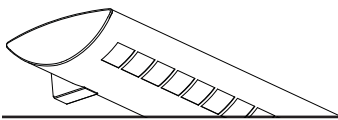
BSLWP1 = 1-power mount
BSLWP2 = 2-power mount

Job Information

Type:

Lightolier a Genlyte Company www.lightolier.com
 631 Airport Road, Fall River, MA 02720 • (508) 679-8131 • Fax (508) 674-4710
 We reserve the right to change details of design, materials and finish.
 © 2005 Genlyte Group LLC • 0205 Rev.1

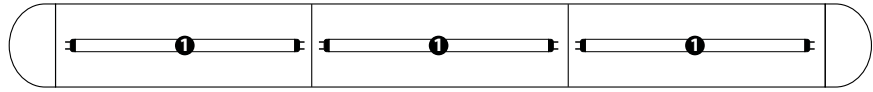
LIGHTOLIER®



Wiring Options: 1 Circuit

1 Circuit

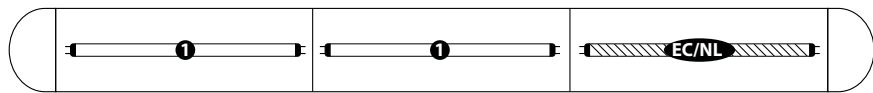
- Type 1:** 1cct.
- Type 8:** 1cct. w/1cct. thru wire
- Type H:** 1cct. w/2cct. thru wire
- Type 7:** 1cct. w/dimming



All lamps wired on one circuit.

1 Circuit with Emergency Circuit/Night Light (EC/NL)

- Type 3:** 1cct. w/EC/NL



One 4' section in a one circuit fixture to be wired on a separate thru circuit. Leads for both normal circuit and EC/NL circuit wired to fixture ends. All lamps in EC/NL section to be wired together.

1 Circuit with Emergency Battery Pack (EM)

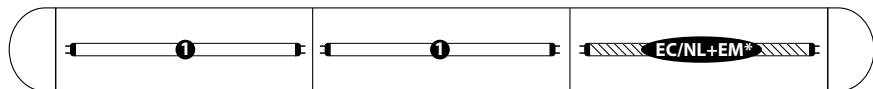
- Type 5:** Chloride standard
CTP700
- Type M:** Bodine standard
LP550
- Type E:** Chloride high performance
CTP1300
- Type P:** Bodine high performance
LP600



All lamps wired on one circuit, plus a battery pack is wired to one lamp. A hot lead is connected to the battery pack and would function as a 'trigger' wire when connected to a constant hot by installer. Leads for both normal circuit and battery pack are wired to fixture ends.

1 Circuit with Emergency Circuit/Night Light and Emergency Battery Pack

- Type J:** Chloride standard
CTP700

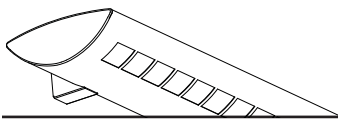


One 4' section in a one circuit fixture to be wired on a separate thru circuit, in addition, a battery pack is wired to one lamp. Installer can connect 'trigger' wire to EC hot lead if controlled together or wire separately if controlled independently. Leads for normal circuit, EC/NL circuit and EM wired to fixture ends. All lamps in EC/NL section to be wired together.

Job Information

Type:

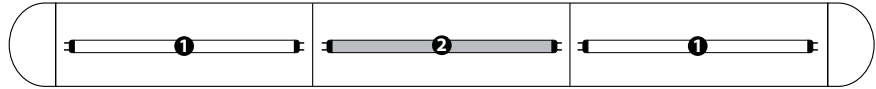
Lightolier a Genlyte Company www.lightolier.com
 631 Airport Road, Fall River, MA 02720 • (508) 679-8131 • Fax (508) 674-4710
 We reserve the right to change details of design, materials and finish.
 © 2005 Genlyte Group LLC • 0205 Rev.1



Wiring Options: 2 Circuit A/B Switching (alternate 4' sections)

2 Circuit A/B Switching (alternate 4' sections)

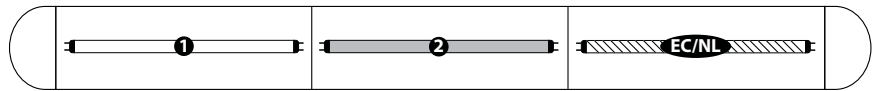
- Type B:** 2cct.
- Type A:** 2cct. w/1cct. thru wire
- Type S:** 2cct. w/2cct. thru wire



Fixture wired for two circuit. Lamps wired for A/B switching in alternate 4' sections.

2 Circuit A/B Switching (alternate 4' sections) with Emergency Circuit/Night Light (EC/NL)

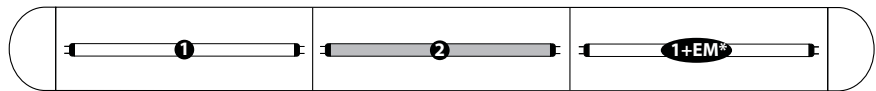
- Type C:** 2cct. w/EC/NL



One 4' section in a two circuit fixture (A/B switching) to be wired on a separate thru circuit. Leads for both normal circuit and EC/NL circuit wired to fixture ends.

2 Circuit A/B Switching (alternate 4' sections) with Emergency Battery Pack (EM)

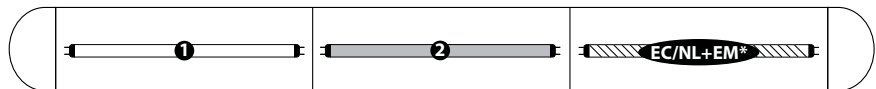
- Type D:** Chloride standard
CTP700
- Type O:** Bodine standard
LP550
- Type G:** Chloride high performance
CTP1300
- Type R:** Bodine high performance
LP600



Fixture wired for two circuits (A/B switching), plus a battery pack is wired to one lamp. A hot lead is connected to the battery pack and would act as a 'trigger' wire when connected to a constant hot by installer. Leads for both normal circuit and battery pack are wired to fixture ends.

2 Circuit A/B Switching (alternate 4' sections) with Emergency Circuit/Night Light and Emergency Battery Pack

- Type L:** Chloride standard
CTP700



One 4' section in a two circuit fixture (A/B switching) to be wired on a separate thru circuit, in addition, a battery pack is wired to one lamp. Installer can connect 'trigger' wire to EC hot lead if controlled together or wired separately if controlled independently. Leads for normal circuit, EC/NL circuit and battery pack are wired to fixture ends. All lamps in EC/NL module to be wired together.

Job Information

Type:

Lightolier a Genlyte Company www.lightolier.com
 631 Airport Road, Fall River, MA 02720 • (508) 679-8131 • Fax (508) 674-4710
 We reserve the right to change details of design, materials and finish.
 © 2005 Genlyte Group LLC • 0205 Rev.1

LIGHTOLIER®