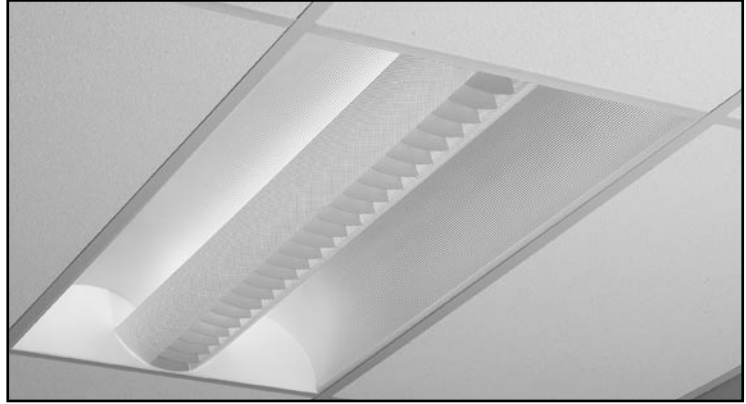


# QVS2GPTLG332

## ALTER METALYTE LOUVER

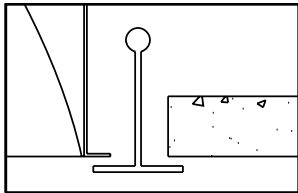
2' X 4' RECESSED DIRECT/INDIRECT FLUORESCENT  
 3 LAMP, T8, 5 1/2" DEEP  
 MICROPERFORATED MESH WHITE LAMP SHIELD  
 GREY SOLID LOUVER BLADES, STATIC

- Efficiency 40%.
- Flat blade louver with lens overlay and perforated curved side blades.
- Semi-specular aluminum reflectors with lengthwise ridges.
- No visible welding, screws, latches, springs, hooks, rivets or plastic supports.
- 5-1/2" deep, one-piece body for easy installation.
- Choice of white microperforated blade, white solid blade or grey solid blade.
- Easy access to ballast through lamp compartment.
- Fits standard T-grid, exposed slot T-grid ceilings.
- Fully recessed luminaire and lamp compartment.
- Optional hold-down clips.
- Luminaire can be row mounted.

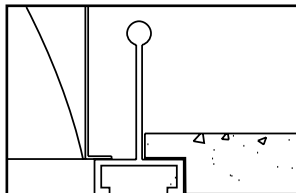


### MOUNTING METHODS/FEATURES

Ceiling compatibility

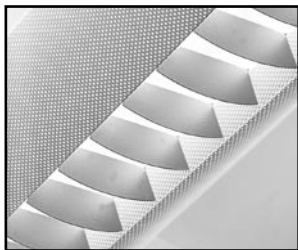


Suited to standard exposed T-grid ceilings

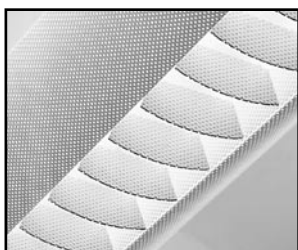


Suited to standard exposed Slot T-grid ceilings

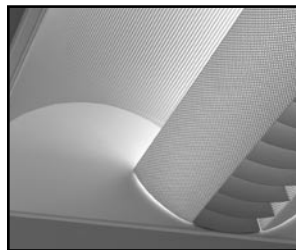
Microperforated mesh white lamp shields  
 grey solid louver



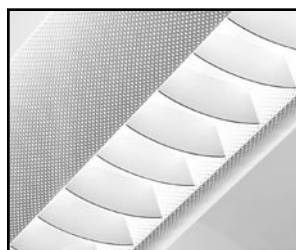
Microperforated mesh white lamp shields  
 white mesh louver



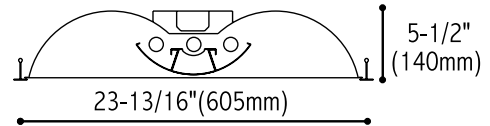
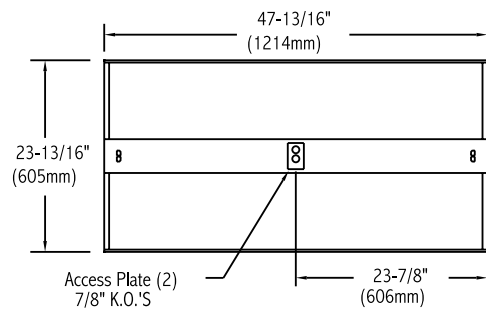
Semi-spec aluminum reflector  
 with lengthwise ridges



Microperforated mesh white lamp shields  
 white solid louver



### DIMENSIONS



**FIXTURE TYPE** \_\_\_\_\_ **VOLTS** \_\_\_\_\_

JOB INFORMATION: \_\_\_\_\_

\_\_\_\_\_

\_\_\_\_\_

\_\_\_\_\_

**LIGHTOLIER**  
 Genlyte Thomas Company

# QVS2GPTLG332

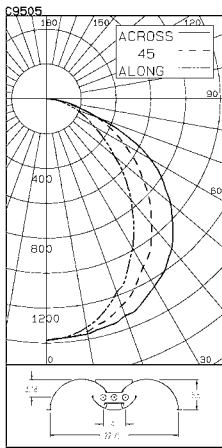
# ALTER METALYTE LOUVER 2' X 4' RECESSED DIRECT/INDIRECT FLUORESCENT

CERTIFIED TEST REPORT NO. LSC9505  
COMPUTED BY LSC PROGRAM \*\*TEST-LITE\*\*

LIGHTOLIER-CFI ALTER 2x4 RECESSED FIXTURE CAT. NO. QVS2GPTLG33212003  
WITH ALUMINUM RIBBED REFLECTOR AND GREY FLAT BLADE LOUVER  
THREE 32W T8 FLUORESCENT LAMPS. LUMEN RATING = 2950 LMS.  
ONE ADVANCE TRANSFORMER 120V 2 OR 3-LAMP ELECTRONIC BALLAST NO. REL-3P32-SC

LIGHTING SCIENCES CANADA LTD.  
440 PHILLIP ST., UNIT 19  
WATERLOO, ONTARIO

CERTIFIED TEST REPORT NO. LSC9505  
COMPUTED BY LSC PROGRAM \*\*TEST-LITE\*\*



CANDLEPOWER SUMMARY					OUTPUT LUMENS
ANGLE	ALONG	45	ACROSS	67.5	
0	1386	1386	1386	1386	1386
5	1369	1372	1375	1371	1375
10	1331	1332	1355	1373	1369
15	1268	1286	1319	1341	1351
20	1182	1206	1262	1306	1324
25	1098	1116	1198	1259	1294
30	992	1022	1113	1211	1242
35	876	932	1044	1144	1192
40	757	809	940	1074	1121
45	638	695	842	973	1026
50	507	575	726	870	931
55	409	474	626	754	816
60	316	385	513	634	697
65	248	311	413	489	518
70	191	232	311	325	326
75	130	165	184	178	194
80	87	100	88	103	111
85	41	40	22	32	31
90	6	3	3	0	42

ZONAL LUMENS AND PERCENTAGES			
ZONE	LUMENS	% LAMP	% LUMINAIRE
0-30	1050	11.86	29.89
0-40	1695	19.16	48.26
0-60	2889	32.64	82.23
0-90	3513	39.70	100.00
40-90	1817	20.54	51.74
60-90	624	7.05	17.77
90-180	0	.00	.00
0-180	3513	39.70	100.00

\*\* EFFICIENCY = 39.7% \*\*

LUMINANCE SUMMARY-CD. / SQ. M.

ANGLE	ALONG	45	ACROSS
45	1307	1732	2112
55	1032	1588	2069
65	849	1420	1783
75	726	1031	1088
85	688	363	515

S/MH = 1.3  
SC(ALONG) = 1.1, SC(ACROSS) = 1.3

CERTIFIED BY: DATE: NOV 5, 2002

PREPARED FOR: LIGHTOLIER-CFI  
CORNWALL, ONTARIO

TESTED ACCORDING TO IES PROCEDURES. TEST DISTANCE EXCEEDS FIVE TIMES THE GREATEST LUMINOUS OPENING OF LUMINAIRE.

LIGHTOLIER-CFI ALTER 2x4 RECESSED FIXTURE CAT. NO. QVS2GPTLG33212003  
WITH ALUMINUM RIBBED REFLECTOR AND GREY FLAT BLADE LOUVER  
THREE 32W T8 FLUORESCENT LAMPS. LUMEN RATING = 2950 LMS.  
ONE ADVANCE TRANSFORMER 120V 2 OR 3-LAMP ELECTRONIC BALLAST NO. REL-3P32-SC

COEFFICIENTS OF UTILIZATION

ZONAL CAVITY METHOD

EFFECTIVE FLOOR CAVITY REFLECTANCE = .20

CC WALL	80		70		50		30		10		0								
	70	50	30	10	70	50	30	10	50	30		10	50	30	10	0			
RCR	0	.47	.47	.47	.46	.46	.46	.46	.44	.44	.44	.42	.42	.42	.41	.41	.41	.40	
	1	.44	.42	.41	.39	.43	.41	.40	.39	.39	.38	.37	.38	.37	.36	.37	.36	.35	.34
	2	.40	.37	.35	.33	.39	.37	.34	.32	.35	.33	.32	.34	.32	.31	.33	.31	.30	.29
	3	.37	.33	.30	.28	.36	.33	.30	.28	.31	.29	.27	.30	.28	.27	.29	.28	.26	.25
	4	.34	.30	.26	.24	.33	.29	.26	.24	.28	.26	.23	.27	.25	.23	.26	.24	.23	.22
	5	.31	.26	.23	.20	.30	.26	.23	.20	.25	.22	.20	.24	.22	.20	.24	.21	.20	.19
	6	.29	.24	.20	.18	.28	.23	.20	.18	.23	.20	.18	.22	.19	.17	.21	.19	.17	.16
	7	.26	.21	.18	.16	.26	.21	.18	.15	.20	.17	.15	.20	.17	.15	.19	.17	.15	.14
	8	.24	.19	.16	.14	.24	.19	.16	.13	.18	.15	.13	.18	.15	.13	.17	.15	.13	.12
	9	.22	.17	.14	.12	.22	.17	.14	.12	.16	.14	.12	.16	.13	.12	.16	.13	.11	.11
	10	.21	.16	.12	.10	.20	.15	.12	.10	.15	.12	.10	.15	.12	.10	.14	.12	.10	.09

DETERMINED IN ACCORDANCE WITH CURRENT IES PUBLISHED PROCEDURES  
LUMINAIRE INPUT WATTS = 83.3  
LABORATORY RESULT MAY NOT BE REPRESENTATIVE OF FIELD PERFORMANCE.  
BALLAST FACTORS HAVE NOT BEEN APPLIED.

## ORDERING INFORMATION Explanation of Catalogue Number Example: QVS2GPTLV33212003

<b>QVS</b> FAMILY QVS= Quality Visual Static	<b>2</b> LUMINAIRE WIDTH 24"	<b>G</b> CEILING TYPE G=Grid	<b>PT</b> LAMP SHIELD PT= Semi-specular matte reflector / Microperforated mesh lamp shield	<b>LV</b> SHIELD DETAILING LG= Grey solid flat blade louver LV= White perforated flat blade louver LW= White solid flat blade louver	<b>3</b> LAMP QUANTITY 3	<b>32</b> LAMP/FIXTURE LENGTH 32= 32W (T8 nominal 48")	<b>120</b> VOLTAGE 120,277 347	<b>03</b> BALLAST SO: T8 Elect. O3: 3LPB T8 Elect. PS: T8 PowerSpec HDF Dimming † DA: iGEN DALI †	<b>Options</b> F = Internal Fusing (consult factory) N = Emergency Lighting System (for U.S.) O = Emergency Lighting System (for Canada) R = Radio Interface Filter
---	---------------------------------------	---------------------------------------	--	--	-----------------------------------	--	---	--	---

LPB : Number of lamps per ballast

† Not available in 347V.

### SPECIFICATIONS

**MATERIALS:** One piece chassis constructed from die formed 20 gauge cold rolled steel. **Optic** - Semi-specular matte aluminum reflector with lengthwise ridges. Soft white acrylic film on inside of lamp shield conceals lamp image.

**FINISH:** Chassis exterior - phosphate undercoating, baked white acrylic matte high reflectance paint finish. **Louver** - flat blade louver with soft white acrylic overlay.

**ELECTRICAL:** Rapid start HPF, thermally protected class "P" ballast. If K.O.s are within 3" of ballast use wire suitable for at least 90C.

**LABELS:** Listed by CSA, UL

We reserve the right to change, materials and finish in any way that will not alter installed appearance or reduce function and performance.

Genlyte Thomas Company

631 Airport Road, Fall River, MA 02720 - Tel. (508) 679-8131  
C.F.I. Division of Canlyte, Inc.  
525 Education Road, Cornwall, Ontario  
Canada K6H 6C7 - (613) 938-6221