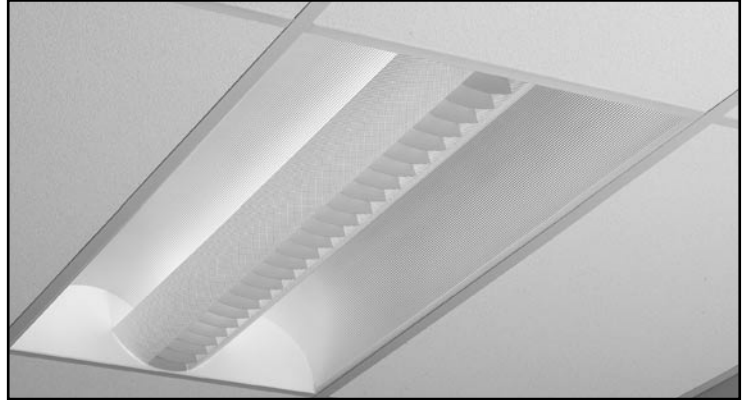


QVS2GPTLG232

ALTER METALYTE LOUVER

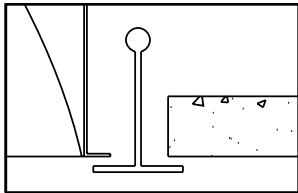
2' X 4' RECESSED DIRECT/INDIRECT FLUORESCENT
 2 LAMP, T8, 5 1/2" DEEP
 MICROPERFORATED MESH WHITE LAMP SHIELD
 GREY SOLID LOUVER BLADES, STATIC

- Efficiency 41.4%.
- Flat blade louver with lens overlay and perforated curved side blades.
- Semi-specular aluminum reflectors with lengthwise ridges.
- No visible welding, screws, latches, springs, hooks, rivets or plastic supports.
- 5-1/2" deep, one-piece body for easy installation.
- Choice of white microperforated blade, white solid blade or grey solid blade.
- Easy access to ballast through lamp compartment.
- Fits standard T-grid, exposed slot T-grid ceilings and drywall ceilings.
- Fully recessed luminaire and lamp compartment.
- Optional hold-down clips.
- Luminaire can be row mounted.

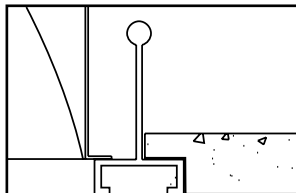


MOUNTING METHODS/FEATURES

Ceiling compatibility

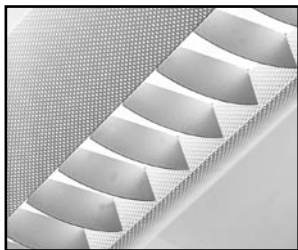


Suited to standard exposed T-grid ceilings

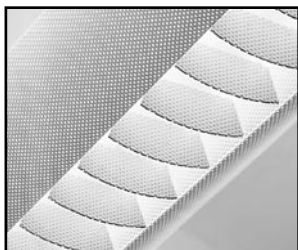


Suited to standard exposed Slot T-grid ceilings

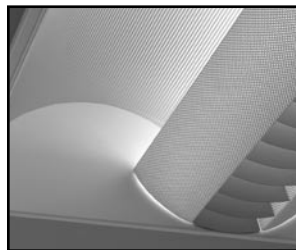
Microperforated mesh white lamp shields
 grey solid louver



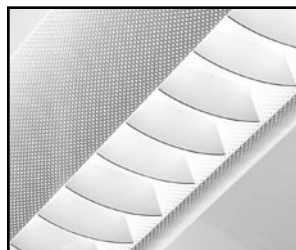
Microperforated mesh white lamp shields
 white mesh louver



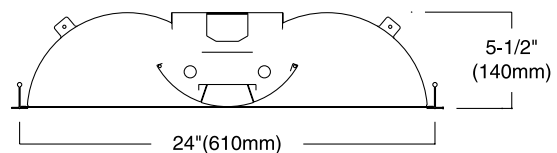
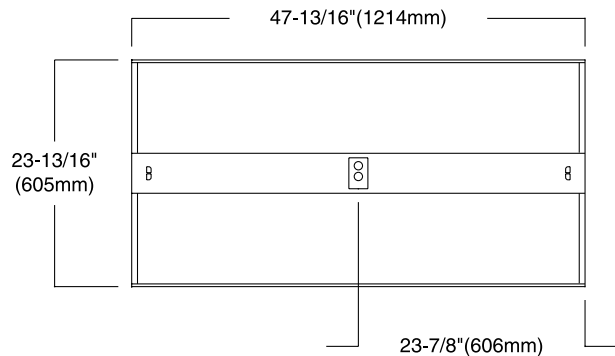
Semi-spec aluminum reflector
 with lengthwise ridges



Microperforated mesh white lamp shields
 white solid louver



DIMENSIONS



FIXTURE TYPE

VOLTS

JOB INFORMATION:

QVS2GPTLG232

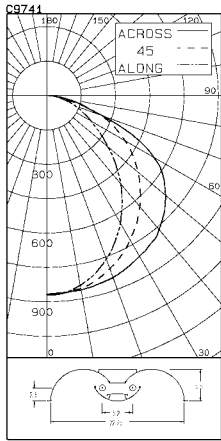
ALTER METALYTE LOUVER 2' X 4' RECESSED DIRECT/INDIRECT FLUORESCENT

CERTIFIED TEST REPORT NO. LSC9741
COMPUTED BY LSC PROGRAM **TEST-LITE**

LIGHTOLIER-CFI 2x4 RECESSED LUMINAIRE CAT. NO. QVS2GPTLG232120SO
WITH WHITE PAINTED REFLECTORS, SILVER BALLAST COVER, GREY FLAT BLADE LOUVER
TWO 32W T8 FLUORESCENT LAMPS. LUMEN RATING = 2950 LMS.
ONE ADVANCE 120V 1 OR 2-LAMP ELECTRONIC BALLAST NO. REL-2P32-SC

LIGHTING SCIENCES CANADA LTD.
440 PHILLIP ST., UNIT 19
WATERLOO, ONTARIO

CERTIFIED TEST REPORT NO. LSC9741
COMPUTED BY LSC PROGRAM **TEST-LITE**



CANDLEPOWER SUMMARY		OUTPUT LUMENS	
ANGLE	ALONG	45	67.5 ACROSS
0	868	868	868
5	866	865	866
10	841	848	854
15	807	819	835
20	759	772	804
25	703	724	770
30	642	668	727
35	575	607	685
40	502	545	633
45	424	474	577
50	350	406	521
55	282	336	459
60	222	277	394
65	173	227	326
70	132	177	250
75	91	129	141
80	58	71	65
85	23	16	17
90	0	1	0

ZONAL LUMENS AND PERCENTAGES			
ZONE	LUMENS	% LAMP	%LUMINAIRE
0-30	670	11.37	27.64
0-40	1096	18.59	45.21
0-60	1945	32.97	80.19
0-90	2426	41.12	100.00
40-90	1329	22.53	54.79
60-90	480	8.15	19.81
90-180	0	.00	.00
0-180	2426	41.12	100.00

** EFFICIENCY = 41.1% **

LUMINAIRE SUMMARY-CD. / SQ. M.

S/MH = 1.4

SC(ALONG) = 1.1, SC(ACROSS) = 1.4

ANGLE	ALONG	45	ACROSS
45	867	1184	1488
55	710	1161	1574
65	590	1120	1442
75	510	790	912
85	385	287	521

CERTIFIED BY: DATE: MAY 15, 2003
PREPARED FOR: LIGHTOLIER-CFI
CORNWALL, ONTARIO

TESTED ACCORDING TO IES PROCEDURES. TEST DISTANCE EXCEEDS FIVE TIMES THE GREATEST LUMINOUS OPENING OF LUMINAIRE.

LIGHTOLIER-CFI 2x4 RECESSED LUMINAIRE CAT. NO. QVS2GPTLG232120SO
WITH WHITE PAINTED REFLECTORS, SILVER BALLAST COVER, GREY FLAT BLADE LOUVER
TWO 32W T8 FLUORESCENT LAMPS. LUMEN RATING = 2950 LMS.
ONE ADVANCE 120V 1 OR 2-LAMP ELECTRONIC BALLAST NO. REL-2P32-SC

COEFFICIENTS OF UTILIZATION

ZONAL CAVITY METHOD

EFFECTIVE FLOOR CAVITY REFLECTANCE = .20

CC WALL	80		70		50		30		10		0				
	70	50	30	10	70	50	30	10	50	30	10	50	30	10	0
RCR	0	.49	.49	.49	.49	.48	.48	.48	.48	.46	.46	.46	.44	.44	.44
1	.45	.43	.42	.40	.44	.43	.41	.40	.41	.40	.38	.39	.38	.37	.38
2	.41	.38	.36	.33	.40	.37	.35	.33	.36	.34	.32	.35	.33	.32	.34
3	.38	.34	.31	.28	.37	.33	.30	.28	.32	.30	.28	.31	.29	.27	.30
4	.35	.30	.27	.24	.34	.30	.26	.24	.29	.26	.24	.28	.25	.23	.27
5	.32	.27	.23	.20	.31	.26	.23	.20	.25	.22	.20	.24	.22	.20	.24
6	.29	.24	.20	.18	.28	.23	.20	.18	.23	.20	.17	.22	.19	.17	.21
7	.27	.21	.18	.15	.26	.21	.18	.15	.20	.17	.15	.20	.17	.15	.19
8	.25	.19	.16	.13	.24	.19	.16	.13	.18	.15	.13	.18	.15	.13	.17
9	.23	.17	.14	.11	.22	.17	.14	.11	.16	.13	.11	.16	.13	.11	.16
10	.21	.16	.12	.10	.21	.15	.12	.10	.15	.12	.10	.15	.12	.10	.14

DETERMINED IN ACCORDANCE WITH CURRENT IES PUBLISHED PROCEDURES
LUMINAIRE INPUT WATTS = 57.7
LABORATORY RESULT MAY NOT BE REPRESENTATIVE OF FIELD PERFORMANCE.
BALLAST FACTORS HAVE NOT BEEN APPLIED.

ORDERING INFORMATION Explanation of Catalogue Number Example: QVS2GPTLG232120SO

QVS

FAMILY
QVS: Quality
Visual Static

2

LUMINAIRE
WIDTH
24"

G

CEILING
TYPE
G=Grid

PT

LAMP
SHIELD
PT= Semi-specular matte
reflector /
Microperforated mesh
lamp shield

LG

SHIELD DETAILING
LG= Grey solid flat blade louver
LV= White perforated flat blade louver
LW= White solid flat blade louver

2

LAMP
QUANTITY
2

32

LAMP/FIXTURE
LENGTH
32= 32W
(T8 nominal 48")

120

VOLTAGE
120,277
347

SO

BALLAST
SO: 2 LPB T8 Elect.
PS: T8 PowerSpec HDF Dimming †
DA: iGEN DALI †

Options

F = Internal Fusing
(consult factory)
N = Emergency Lighting
System (for U.S.)
O = Emergency Lighting
System (for Canada)
R = Radio Interface
Filter

LPB : Number of lamps per ballast

† Not available in 347V.

SPECIFICATIONS

MATERIALS: One piece chassis constructed from die formed 20 gauge cold rolled steel. **Optic** - Semi-specular matte aluminum reflector with lengthwise ridges. Soft white acrylic film on inside of lamp shield conceals lamp image.

FINISH: Chassis exterior - phosphate undercoating, baked white acrylic matte high reflectance paint finish. **Louver** - flat blade louver with soft white acrylic overlay.

ELECTRICAL: Rapid start HPF, thermally protected class "P" ballast. If K.O.s are within 3" of ballast use wire suitable for at least 90C.

LABELS: Listed by CSA, UL

We reserve the right to change, materials and finish in any way that will not alter installed appearance or reduce function and performance.

LIGHTOLIER
Genlyte Thomas Company

631 Airport Road, Fall River, MA 02720 - Tel. (508) 679-8131
C.F.I. Division of Canlyte, Inc.
525 Education Road, Cornwall, Ontario
Canada K6H 6C7 - (613) 938-6221