

# ALTER WAVES QVL2GPFSS432

## 2'x4' RECESSED DIRECT/INDIRECT FLUORESCENT, 4 LAMP, T8, 5 1/2" DEEP MICROPERFORATED MESH DUAL LATERAL LAMP SHIELD

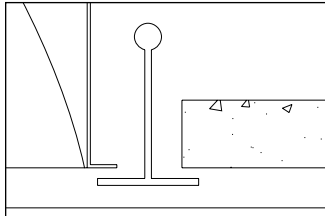
### Features

- Efficiency 58.6%.
- Microperforated mesh lamp shields provide soft awareness of light source.
- Dual-wave shape lateral lamp shields project light upwards to reflector and provide indirect light.
- 95% reflective Alter soft white paint finish.
- Fully recessed lamp shields and reflector.
- No visible welding, screws, latches, springs, holes, rivets or plastic supports.
- Optional solid lamp shields.
- Optional curved lamp shields.
- Alter soft white film inside of microperforated mesh lamp shield conceals lamp image, providing balance between reflected and direct light.
- Swing-down lamp shield for easy relamping.
- Easy access to ballast.
- Fits standard T-grid, exposed slot-T-grid and drywall ceilings.
- Optional hold-down clips.

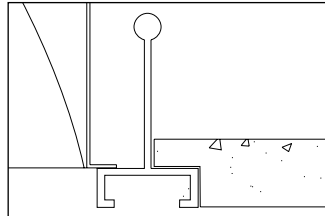


### Mounting Methods / Features

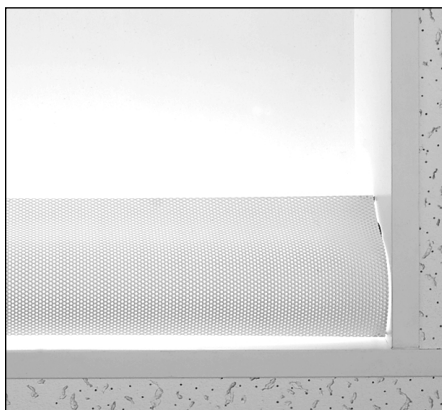
Ceiling compatibility



Suite to standard T-grid ceilings

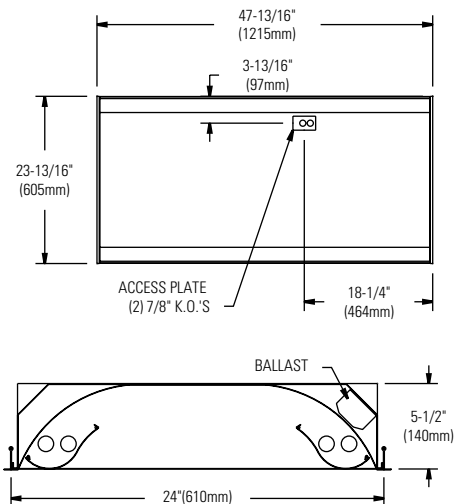


Suite to standard exposed slot T-grid ceilings



Microperforated mesh lamp shield

### Dimensions



Job Information	Type:
<b>Job Name:</b>	
<b>Cat. No.:</b>	
<b>Lamp(s):</b>	
<b>Volts/Ballast:</b>	

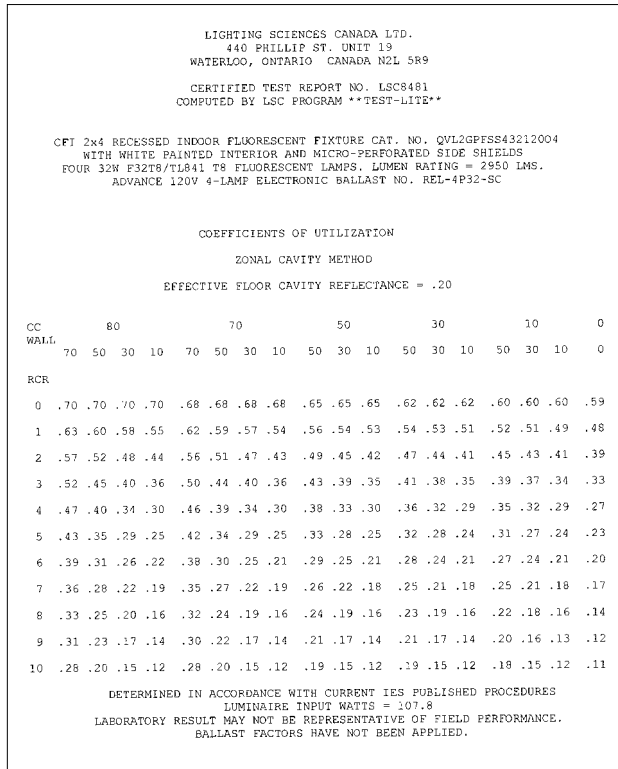
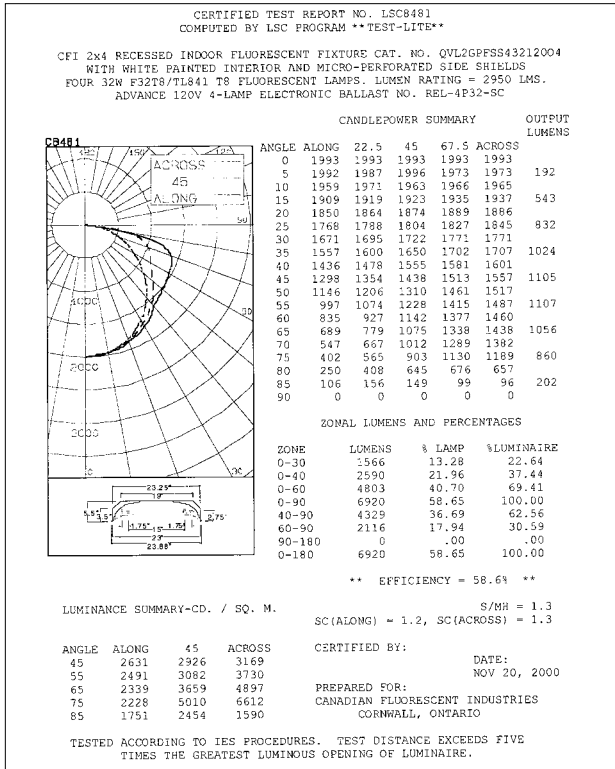
Lightolier a Genlyte Thomas Company [www.lightolier.com](http://www.lightolier.com)  
 Technical Information: (978) 657-7600 • Fax (978) 658-0595  
 631 Airport Road, Fall River, MA 02720 • (508) 679-8131 • Fax (508) 674-4710  
 We reserve the right to change details of design, materials and finish.  
 © 2002 Genlyte Thomas Group LLC (Lightolier Division)  
 A0902

Folio L90-30

LIGHTOLIER®

## 2'x4' RECESSED DIRECT/INDIRECT FLUORESCENT, 4 LAMP, T8, 5 1/2" DEEP MICROPERFORATED MESH DUAL LATERAL LAMP SHIELD

### Photometry



### Ordering Information

Explanation of Catalog Number. Example: QVL2GPFSS43212004

<b>QVL</b>	<b>2</b>	<b>G</b>			<b>4</b>	<b>32</b>			
<b>FAMILY</b> QVL: Quality Visual Waves	<b>LUMINAIRE WIDTH:</b> 24"	<b>CEILING TYPE:</b> G = Grid	<b>LAMP SHIELD:</b> PF = Microperforated mesh SD = Solid White	<b>SHIELD DETAILING</b> SS = Lateral Wave Side Shields SR = Lateral Curved Side Shields	<b>LAMP QUANTITY</b> 4	<b>LAMP</b> 32 = 32W (T8 NOMINAL 48')	<b>VOLTAGE:</b> 120V 277V 347V	<b>BALLAST:</b> OC = Magnetic T8 SO = 1 or 2 LPB electronic T8 IS SR = 1 or 2 LPB electronic T8 RS PS = PowerSpec HDF Dimming Electronic T8 O4 = Electronic 4 LPB T8 IS R4 = Electronic 4 LPB T8 RS	<b>OPTIONS:</b> F = Internal Fusing (consult factory) N = Emergency Lighting System (for U.S.) O = Emergency Lighting System (for Canada) R = Radio Interference Filter

LPB: Number of lamps per ballast.

### SPECIFICATIONS

**MATERIALS:** One piece chassis constructed from die formed 20 gauge cold rolled steel. Reflectors - 95% reflectance baked white acrylic matte paint finish. Soft white acrylic film on inside of lamp shield conceals lamp image.

**FINISH:** Chassis exterior - phosphate undercoating, baked white acrylic matte high reflectance paint finish.

**ELECTRICAL:** Rapid start HPF, thermally protected class "P" ballast. If K.O.s are within 3" of ballast use wire suitable for at least 90C.

**LABELS:** Listed by



### Job Information

Type:

Lightolier a Genlyte Thomas Company [www.lightolier.com](http://www.lightolier.com)  
Technical Information: (978) 657-7600 • Fax (978) 658-0595  
631 Airport Road, Fall River, MA 02720 • (508) 679-8131 • Fax (508) 674-4710  
We reserve the right to change details of design, materials and finish.  
© 2002 Genlyte Thomas Group LLC (Lightolier Division)  
A0902

Folio L90-30

LIGHTOLIER®