

ALTER SOFT LIGHTS **QVH2GPFOS4FT** 4X40W

Page 1 of 2

2' X 4' SLIM SEMI-RECESSED DIRECT/INDIRECT FLUORESCENT, 4 LAMP, TT5 BI-TUBE
2 1/4" RECESSED DEPTH CEILING MICROPERFORATED MESH LAMP SHIELD, STATIC

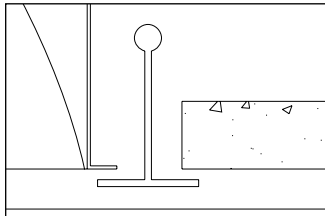
Features

- Efficiency 51.0%.
- Shallow plenum depth.
- Swing down microperforated lamp shields for easy relamping and maintenance.
- Alter soft white film on inside of mesh conceals lamp image and provide balance between reflected light and direct light.
- 95% Reflective Alter soft white paint finish.
- One piece body for easy installation.
- Easy access to ballast through lamp compartment.
- Fits standard T-Grid ceilings.
- Optional acrylic drop-down visual element
- Slim Semi-Recess and Slim Surface luminaires have the same photometric performance data.

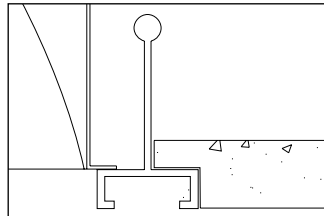


Mounting Methods / Features

Ceiling compatibility



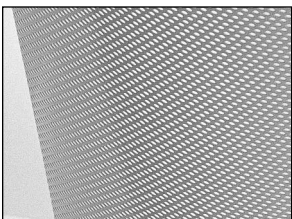
Suited to standard exposed T-grid ceilings



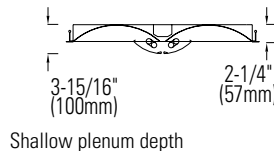
Suited to standard exposed Slot T-grid ceilings



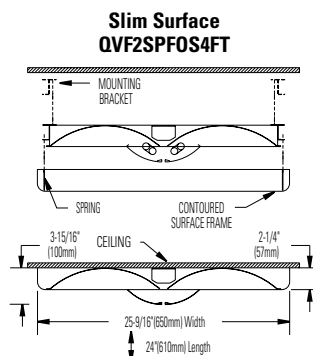
Swing down optical system for easy relamping and maintenance



Microperforated mesh lamp shields

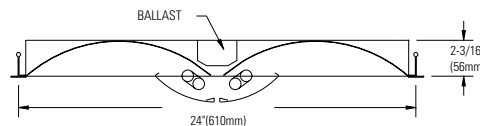
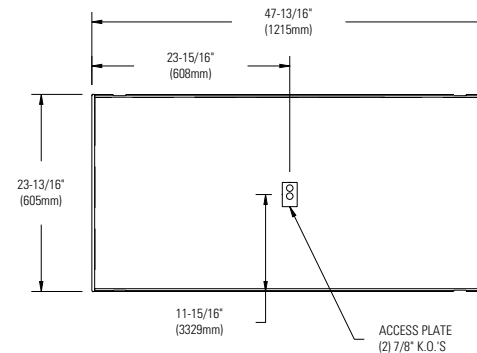


Shallow plenum depth



Slim Surface and Slim Semi-Recessed have the same photometric performance data.

Dimensions



Job Information

Type:

Job Name:

Cat. No.:

Lamp(s):

Volts/Ballast:

Lightolier a Genlyte Thomas Company

www.lightolier.com

Technical Information: (978) 657-7600 • Fax (978) 658-0595

631 Airport Road, Fall River, MA 02720 • (508) 679-8131 • Fax (508) 674-4710

We reserve the right to change details of design, materials and finish.

© 2002 Genlyte Thomas Group LLC (Lightolier Division)

A0902

Folio L80-15

LIGHTOLIER

ALTER SOFT LIGHTS QVH2GPFOS4FT 4X40W

Page 2 of 2

2' X 4' SLIM SEMI-RECESSED DIRECT/INDIRECT FLUORESCENT, 4 LAMP, TT5 BI-TUBE
2 1/4" RECESSED DEPTH CEILING MICROPERFORATED MESH LAMP SHIELD, STATIC

Photometry

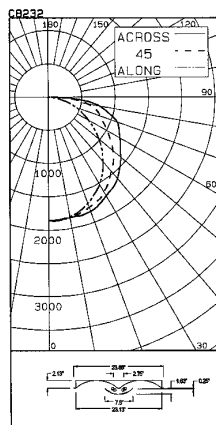
CERTIFIED TEST REPORT NO. LSC8232
COMPUTED BY LSC PROGRAM **TEST-LITE**

ALTER SLIM SEMI-RECESSED 2x4 DIRECT/INDIRECT FIX. CAT. NO. QVH2GPFOS4U4120SBD
WITH WHITE PAINTED INTERIOR, PERFORATED LAMP SHIELDS WITH TRANSLUCENT LENSES
FOUR 40W PL-L COMPACT FLUORESCENT LAMPS. LUMEN RATING = 3150 LMS.
TWO MAGNETEK TRIAD 120V 1 OR 2-LAMP ELECTRONIC BALLASTS NO. C240I120RH

LIGHTING SCIENCES CANADA LTD.
440 PHILLIP ST. UNIT 19
WATERLOO, ONTARIO CANADA N2L 5R9

CERTIFIED TEST REPORT NO. LSC8232
COMPUTED BY LSC PROGRAM **TEST-LITE**

CANDLEPOWER SUMMARY



ANGLE	ALONG	45	67.5	ACROSS	OUTPUT LUMENS
0	1854	1854	1854	1854	
5	1859	1847	1851	1848	179
10	1827	1823	1834	1839	1840
15	1776	1775	1808	1833	1847
20	1707	1719	1766	1827	1829
25	1615	1646	1725	1766	1783
30	1525	1568	1651	1699	1718
35	1405	1467	1569	1632	1671
40	1266	1367	1456	1566	1601
45	1133	1243	1373	1464	1507
50	984	1103	1257	1367	1409
55	839	953	1134	1257	1308
60	691	825	1014	1163	1233
65	560	703	909	1098	1165
70	436	588	827	1023	1095
75	301	487	744	891	940
80	176	386	605	730	783
85	70	244	395	473	517
90	6	34	38	53	61

ZONAL LUMENS AND PERCENTAGES

ZONE	LUMENS	% LAMP	% LUMINAIRE
0-30	1475	11.71	22.94
0-40	2444	19.40	38.00
0-60	4473	35.50	69.55
0-90	6431	51.04	100.00
40-90	3987	31.64	62.00
60-90	1958	15.54	30.45
90-180	0	.00	.00
0-180	6431	51.04	100.00

** EFFICIENCY = 51.0% **

LUMINANCE SUMMARY-CD. / SQ. M.

S/MH = 1.4
SC(ALONG) = 1.2, SC(ACROSS) = 1.4

ANGLE	ALONG	45	ACROSS
45	2277	2640	2842
55	2080	2634	2958
65	1884	2774	3420
75	1655	3451	4105
85	1145	4122	4695

CERTIFIED BY: DATE: MAY 12, 2000
PREPARED FOR: CANADIAN FLUORESCENT INDUSTRIES
CORNWALL, ONTARIO

TESTED ACCORDING TO IES PROCEDURES. TEST DISTANCE EXCEEDS FIVE TIMES THE GREATEST LUMINOUS OPENING OF LUMINAIRE.

ALTER SLIM SEMI-RECESSED 2x4 DIRECT/INDIRECT FIX. CAT. NO. QVH2GPFOS4U4120SBD
WITH WHITE PAINTED INTERIOR, PERFORATED LAMP SHIELDS WITH TRANSLUCENT LENSES
FOUR 40W PL-L COMPACT FLUORESCENT LAMPS. LUMEN RATING = 3150 LMS.
TWO MAGNETEK TRIAD 120V 1 OR 2-LAMP ELECTRONIC BALLASTS NO. C240I120RH

COEFFICIENTS OF UTILIZATION

ZONAL CAVITY METHOD

EFFECTIVE FLOOR CAVITY REFLECTANCE = .20

CC WALL	80	70	50	30	10	0
70	.50	.49	.47	.45	.44	.43
50	.49	.47	.45	.44	.43	.42
30	.47	.45	.44	.43	.42	.41
10	.45	.44	.43	.42	.41	.40
0	.43	.42	.41	.40	.39	.38
70	.42	.41	.40	.39	.38	.37
50	.41	.40	.39	.38	.37	.36
30	.40	.39	.38	.37	.36	.35
10	.39	.38	.37	.36	.35	.34
0	.38	.37	.36	.35	.34	.33
70	.37	.36	.35	.34	.33	.32
50	.36	.35	.34	.33	.32	.31
30	.35	.34	.33	.32	.31	.30
10	.34	.33	.32	.31	.30	.29
0	.33	.32	.31	.30	.29	.28
70	.32	.31	.30	.29	.28	.27
50	.31	.30	.29	.28	.27	.26
30	.30	.29	.28	.27	.26	.25
10	.29	.28	.27	.26	.25	.24
0	.28	.27	.26	.25	.24	.23
70	.27	.26	.25	.24	.23	.22
50	.26	.25	.24	.23	.22	.21
30	.25	.24	.23	.22	.21	.20
10	.24	.23	.22	.21	.20	.19
0	.23	.22	.21	.20	.19	.18
70	.22	.21	.20	.19	.18	.17
50	.21	.20	.19	.18	.17	.16
30	.20	.19	.18	.17	.16	.15
10	.19	.18	.17	.16	.15	.14
0	.18	.17	.16	.15	.14	.13
70	.17	.16	.15	.14	.13	.12
50	.16	.15	.14	.13	.12	.11
30	.15	.14	.13	.12	.11	.10
10	.14	.13	.12	.11	.10	.09
0	.13	.12	.11	.10	.09	.08

DETERMINED IN ACCORDANCE WITH CURRENT IES PUBLISHED PROCEDURES
LABORATORY RESULT MAY NOT BE REPRESENTATIVE OF FIELD PERFORMANCE.
BALLAST FACTORS HAVE NOT BEEN APPLIED.

*Slim Semi-Recessed and Slim Surface luminaires have the same photometric performance data.

Ordering Information

Explanation of Catalog Number Example: QVH2GPFOS4FT120SB

QUALITY VISUAL STATIC	2	CEILING TYPE:	PF	LAMP QUANTITY	4	FT	VOLTAGE:	OPTIONS:
QVH- Slim Semi-Recessed QVF- Slim Surface direct indirect soft light optical system	FIXTURE WIDTH: 2'	G=Standard exposed T-grid ceilings (for QVH) S=Surface (for QVF)	LAMP SHIELD: PF= Microperforated	CLEAR POLISHED ACRYLIC DROP DOWN VISUAL ELEMENT: OS = Open slot (no acrylic) GC = Clear acrylic GG = Clear acrylic / Green projected color face GB = Clear acrylic / Blue projected color face GR = Clear acrylic / Red projected color face	LAMP/fixture LENGTH: (NOMINAL 24") FT = TT5 Bi-Tube	BALLAST: BE = 50W Electronic TT5 RS BR = 40W Electronic TT5 RS BX = 40W Magnetic TT5 RS PB = 40W TT5 PowerSpec Dimming* PC = 50/55W TT5 PowerSpec Dimming* SB = 40W Generic Electronic TT5	*Not available in 347V.	F = Internal Fusing (consult factory) N = Emergency lighting System (for U.S.) O = Emergency Lighting System (for Canada) R = Radio Interference Filter

Specifications

MATERIALS: One piece chassis constructed from die formed 20 gauge cold rolled steel. Reflectors - 95% reflectance baked white acrylic matte paint finish. Soft white acrylic film on inside of lamp shield conceals lamp image.

FINISH: Chassis exterior - phosphate undercoating, baked white acrylic matte high reflectance paint finish.

ELECTRICAL: Rapid start HPF, thermally protected class "P" ballast (Bi-tube type). If K.O.s are within 3" of ballast use wire suitable for at least 90C.

LABELS: Listed by



Job Information

Type:

Lighttolier a Genlyte Thomas Company
Technical Information: (978) 657-7600 • Fax (978) 658-0595
631 Airport Road, Fall River, MA 02720 • (508) 679-8131 • Fax (508) 674-4710
We reserve the right to change details of design, materials and finish.
© 2002 Genlyte Thomas Group LLC (Lighttolier Division)
A0902

Folio L80-15

LIGHTTOLIER®