

ALTER WAVES QVL2GPFSS232

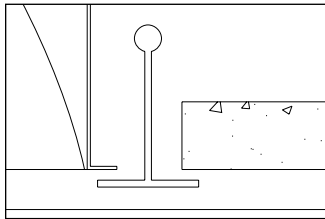
Features

- Efficiency 64.7%.
- Microperforated mesh lamp shields provide soft awareness of light source.
- Dual-wave shape lateral lamp shields project light upwards to reflector and provide indirect light.
- 95% reflective Alter soft white paint finish.
- Fully recessed lamp shields and reflector.
- No visible welding, screws, latches, springs, holes, rivets or plastic supports.
- Optional solid lamp shields.
- Optional curved lamp shields.
- Alter soft white film inside of microperforated mesh lamp shield conceals lamp image, providing balance between reflected and direct light.
- Swing-down lamp shield for easy relamping.
- Easy access to ballast.
- Fits standard T-grid, exposed slot-T-grid ceilings.
- Optional hold-down clips.

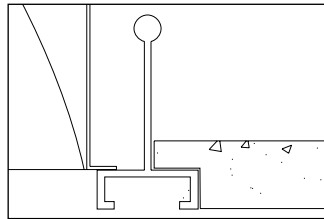


Mounting Methods/Features

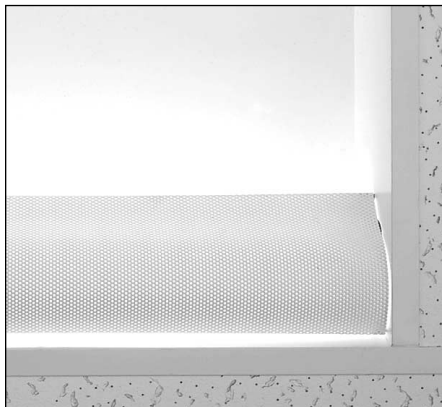
Ceiling compatibility



Suite to standard T-grid ceilings

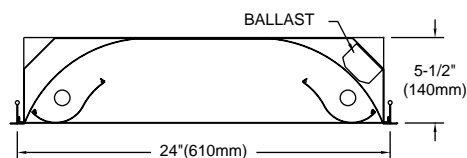
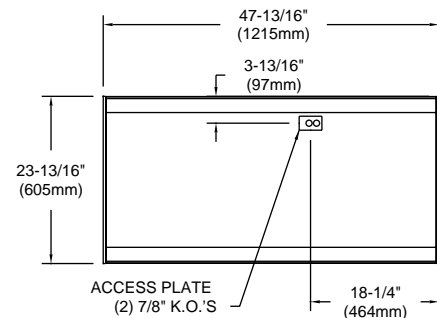


Suite to standard exposed slot T-grid ceilings



Microperforated mesh lamp shield

Dimensions



LIGHTOLIER

Job Information

Type:

Job Name:

Cat. No.:

Lamp(s):

Volts/Ballast:

Lightolier a Genlyte Thomas Company

www.lightolier.com

Technical Information: (978) 657-7600 • Fax (978) 658-0595

631 Airport Road, Fall River, MA 02720 • (508) 679-8131 • Fax (508) 674-4710

We reserve the right to change details of design, materials and finish.

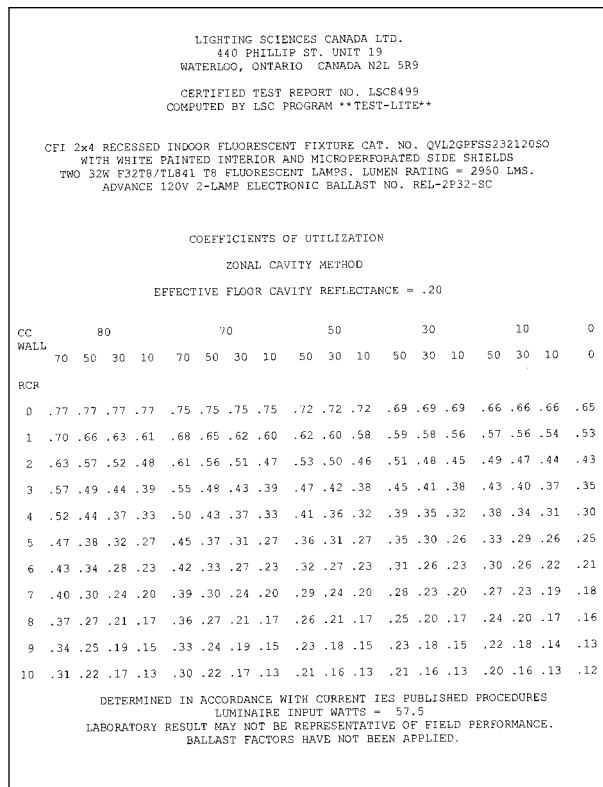
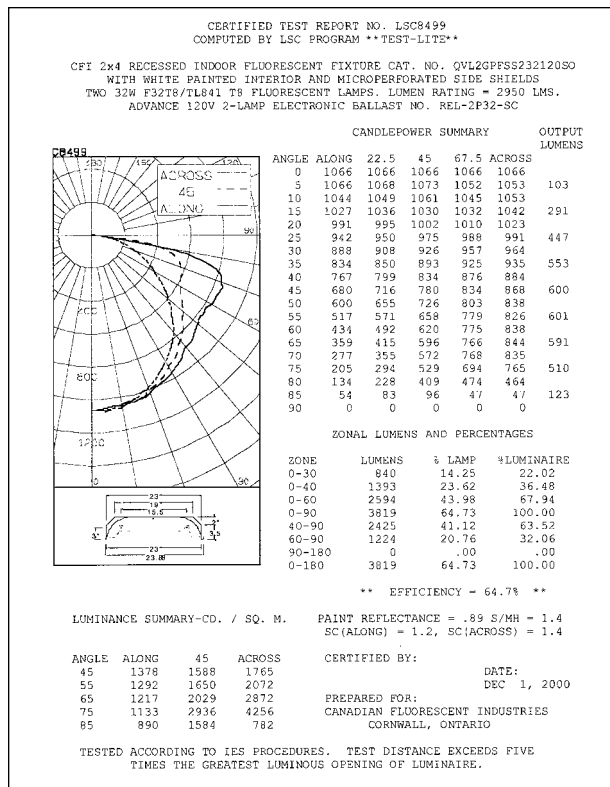
© 2002 Genlyte Thomas Group LLC (Lightolier Division)

A0902

Folio L90-20

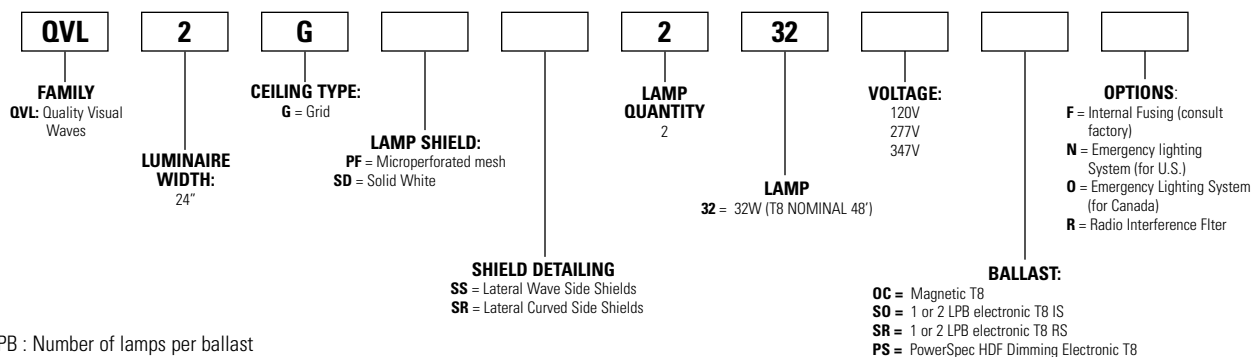


Photometry



Ordering Information:

Explanation of Catalog Number Example: QVL2GPFSS232120S0



Specifications

MATERIALS: One piece chassis constructed from die formed 20 gauge cold rolled steel. Reflectors - 95% reflectance baked white acrylic matte paint finish. Soft white acrylic film on inside of lamp shield conceals lamp image.

FINISH: Chassis exterior - phosphate undercoating, baked white acrylic matte high reflectance paint finish.

ELECTRICAL: Rapid start HPF, thermally protected class "P" ballast. If K.O.s are within 3" of ballast use wire suitable for at least 90C.

LABELS: Listed by



Job Information Type:

Lightolier a Genlyte Thomas Company www.lightolier.com
 Technical Information: (978) 657-7600 • Fax (978) 658-0595
 631 Airport Road, Fall River, MA 02720 • (508) 679-8131 • Fax (508) 674-4710
 We reserve the right to change details of design, materials and finish.
 © 2002 Genlyte Thomas Group LLC (Lightolier Division)
 A0902 **Folio L90-20**