

QVS1GPFLV

ALTER LOUVER

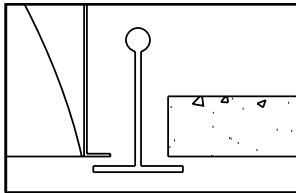
1' X 4' RECESSED DIRECT/INDIRECT FLUORESCENT
2-T8 OR 2-T5, 5 1/2" DEEP
MICROPERFORATED MESH WHITE LAMP SHIELD
MICROPERFORATED MESH WHITE LOUVER BLADES

- Efficiency 59.8%. (T8)
- Flat blade louver with lens overlay and perforated curved side blades.
- Seamless welded form: curved top and side reflectors are formed together without any gaps or visual barriers.
- No visible welding, screws, latches, springs, hooks, rivets or plastic supports.
- 95% reflective Alter soft white paint finish.
- 5-1/2" deep, one-piece body for easy installation.
- Choice of white microperforated blade, white solid blade or grey solid blade.
- Easy access to ballast through lamp compartment.
- Fits standard T-grid, exposed slot T-grid ceilings and drywall ceilings.
- Fully recessed luminaire and lamp compartment.
- Optional hold-down clips.
- Luminaire can be row mounted.

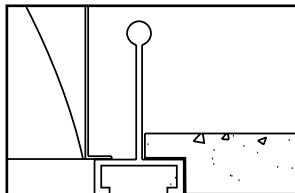


MOUNTING METHODS/FEATURES

Ceiling compatibility

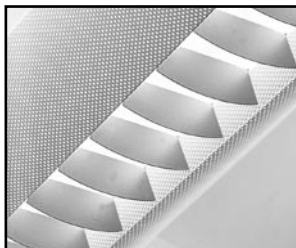


Suited to standard exposed T-grid ceilings

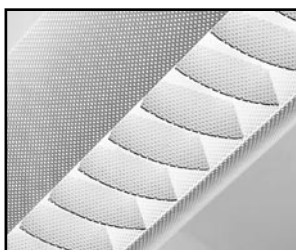


Suited to standard exposed Slot T-grid ceilings

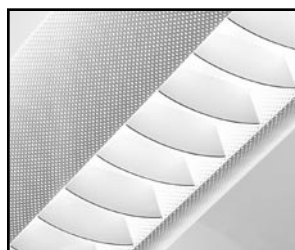
Microperforated mesh white lamp shields
grey solid louver



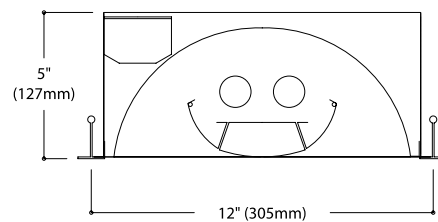
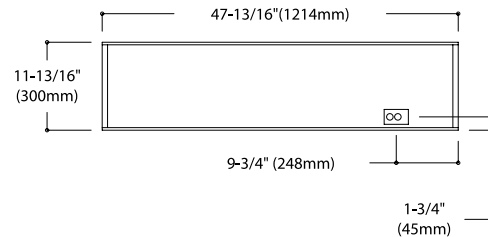
Microperforated mesh white lamp shields
white mesh louver



Microperforated mesh white lamp shields
white solid louver



DIMENSIONS



FIXTURE TYPE

VOLTS

JOB INFORMATION: _____	

QVS1GPFLV

ALTER LOUVER

1' X 4' RECESSED DIRECT/INDIRECT FLUORESCENT

Photometry

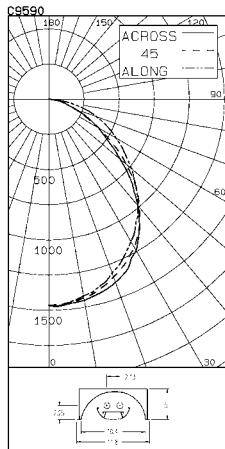
Model No. : QVS1GPFLV232120SO

CERTIFIED TEST REPORT NO. LSC9590
COMPUTED BY LSC PROGRAM **TEST-LITE**

LIGHTOLIER-CFI 1x4 RECESSED FIXTURE CAT. NO. QVS1GPFLV232120SO
WHITE PAINTED REFLECTOR, FLAT BLADE LOUVER WITH MICRO-PERFORATED SIDE SHIELDS
TWO 32W T8 FLUORESCENT LAMPS. LUMEN RATING = 2950 LMS.
ONE ADVANCE 120V 1 OR 2-LAMP ELECTRONIC BALLAST NO. REL-2P32-SC

LIGHTING SCIENCES CANADA LTD.
440 PHILLIP ST., UNIT 19
WATERLOO, ONTARIO

CERTIFIED TEST REPORT NO. LSC9590
COMPUTED BY LSC PROGRAM **TEST-LITE**



CANDLEPOWER SUMMARY					OUTPUT LUMENS
ANGLE	ALONG	45	67.5	ACROSS	
0	1465	1465	1465	1465	
5	1454	1457	1455	1458	141
10	1419	1427	1434	1446	1451
15	1380	1385	1397	1422	395
20	1314	1327	1346	1376	1386
25	1249	1256	1288	1303	590
30	1168	1184	1218	1227	1242
35	1078	1102	1120	1110	1125
40	986	1003	1002	979	987
45	875	898	876	827	835
50	769	778	722	664	662
55	655	653	559	513	514
60	551	520	415	378	403
65	461	393	282	281	299
70	357	268	201	193	187
75	256	153	132	124	161
80	155	76	70	71	77
85	46	29	28	30	29
90	0	1	0	0	0

ZONAL LUMENS AND PERCENTAGES

ZONE	LUMENS	% LAMP	% LUMINAIRE
0-30	1125	19.07	31.91
0-40	1815	30.78	51.48
0-60	2994	50.76	84.91
0-90	3527	59.78	100.00
40-90	1711	29.00	48.52
60-90	532	9.02	15.09
90-180	0	0.00	0.00
0-180	3527	59.78	100.00

** EFFICIENCY = 59.8% **

LUMINANCE SUMMARY-CD. / SQ. M.

S/MR = 1.2
SC = 1.2

ANGLE	ALONG	45	ACROSS
45	3922	3945	3758
55	3618	3101	2953
65	3455	2120	2254
75	3142	1624	1546
85	1672	1012	1047

CERTIFIED BY: _____ DATE: JAN 10, 2003
PREPARED FOR: LIGHTOLIER-CFI
CORNWALL, ONTARIO

TESTED ACCORDING TO IES PROCEDURES. TEST DISTANCE EXCEEDS FIVE
TIMES THE GREATEST LUMINOUS OPENING OF LUMINAIRE.

LIGHTOLIER-CFI 1x4 RECESSED FIXTURE CAT. NO. QVS1GPFLV232120SO
WHITE PAINTED REFLECTOR, FLAT BLADE LOUVER WITH MICRO-PERFORATED SIDE SHIELDS
TWO 32W T8 FLUORESCENT LAMPS. LUMEN RATING = 2950 LMS.
ONE ADVANCE 120V 1 OR 2-LAMP ELECTRONIC BALLAST NO. REL-2P32-SC

COEFFICIENTS OF UTILIZATION

ZONAL CAVITY METHOD

EFFECTIVE FLOOR CAVITY REFLECTANCE = .20

CC WALL	80	70	50	30	10	0
70	50	30	10	70	50	30
50	30	10	70	50	30	10
30	10	70	50	30	10	70
10	70	50	30	10	70	50
0	70	50	30	10	70	50
RCR	.71	.71	.71	.71	.70	.70
0	.66	.66	.66	.66	.64	.64
1	.66	.64	.62	.60	.58	.57
2	.61	.57	.53	.50	.49	.47
3	.56	.51	.46	.43	.42	.41
4	.52	.45	.41	.37	.36	.34
5	.48	.41	.36	.32	.31	.30
6	.44	.37	.32	.28	.27	.26
7	.41	.33	.28	.25	.24	.23
8	.38	.30	.25	.22	.21	.20
9	.35	.27	.22	.19	.18	.17
10	.32	.24	.20	.17	.16	.15

DETERMINED IN ACCORDANCE WITH CURRENT IES PUBLISHED PROCEDURES
LUMINAIRE INPUT WATTS = 59.0
LABORATORY RESULT MAY NOT BE REPRESENTATIVE OF FIELD PERFORMANCE.
BALLAST FACTORS HAVE NOT BEEN APPLIED.

ORDERING INFORMATION Explanation of Catalogue Number Example: QVS1GPFLV232120SB

QVS

FAMILY
QVS: Quality
Visual Static

1

LUMINAIRE
WIDTH
24"

G

CEILING
TYPE
G=Grid

PF

LAMP
SHIELD
PF=Microperforated
mesh

LV

SHIELD DETAILING
LG= Grey solid flat blade louver
LV= White perforated flat blade louver
LW= White solid flat blade louver

2

LAMP
QUANTITY
2

32

LAMP/FIXTURE
LENGTH
32= 32W T8

28 = 28W T5
54 = 54W T5

120

VOLTAGE
120,277
347,UNV(120/277V)

SB

BALLAST

PI: T5 Elect. Instant S.
PG: T5 Elect. Program S.
SO: T8 Elect.
PS: T8 PowerSpec HDF Dimming †
DA: iGEN DALI †

OPTIONS
F = Internal Fusing
(consult factory)
N = Emergency Lighting
System (for U.S.)
O = Emergency Lighting
System (for Canada)
R = Radio Interface
Filter

LPB : Number of lamps per ballast

† Not available in 347V.

SPECIFICATIONS

MATERIALS: One piece chassis constructed from die formed 20 gauge cold rolled steel. **Reflectors** - 95% reflectance baked white acrylic matte paint finish. Soft white acrylic film on inside of lamp shield conceals lamp image.

FINISH: Chassis exterior - phosphate undercoating, baked white acrylic matte high reflectance paint finish. **Louver** - flat blade louver with soft white acrylic overlay.

ELECTRICAL: Rapid start HPF, thermally protected class "P" ballast. If K.O.s are within 3" of ballast use wire suitable for at least 90C.

LABELS: Listed by CSA, UL

We reserve the right to change, materials and finish in any way that will not alter installed appearance or reduce function and performance.

Genlyte Thomas Company

631 Airport Road, Fall River, MA 02720 - Tel. (508) 679-8131
C.F.I. Division of Canlyte, Inc.
525 Education Road, Cornwall, Ontario
Canada K6H 6C7 - (613) 938-6221