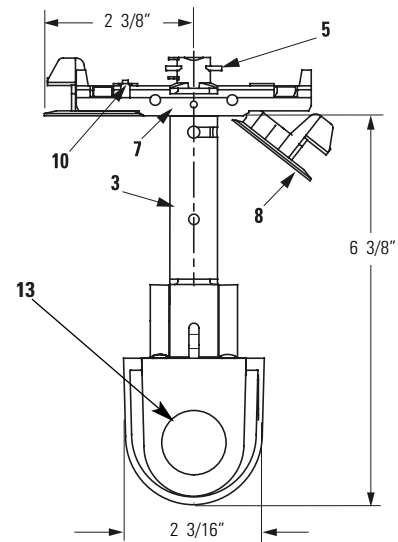


**Warning:** 28702 must be used with Metallics™ OptiSpot™ or MR16 Dome shades for safety issues and to be UL listed.



**Warning:**

Risk of fire. Fixtures 8702 & 28702, when used with an OptiSpot shade, generate intense light beam. Combustible materials must be spaced at least 4ft. away when using the 8710 and 2ft. away when using the 8730. Always use care when illuminating heat sensitive objects.

**Ordering Information**

Catalog No.	Finishes	Track Mountings	Lamps	When used with shades
28702 WH	Matte White	ProSpec™ Track System (DOES NOT MOUNT ON Lytespan® TRACK)	75W max. 12 Volt, T4 2-pin-GY6.35 base Clear with vertical (axial) filament	8710 & 8730
28702 TM	Dark Titanium		50W MAX, 12v MR16 2-pin-GX 5.3 base	8727M16

**Features**

- Arm:** Die-cast aluminum, brushed and clear coated finish.
- Socket Cover:** Injection-molded thermoplastic.
- Stem:** Stainless steel, brushed and clear coated finish, with a permanently tensioned horizontal rotation stop (315° rotation).
- Stem Base:** Die-cast aluminum, brushed and clear coated finish with a permanently tensioned 90° vertical rotation stop (0° to 90°).
- Contact Holder:** High temperature thermoplastic. Secures fixture mechanically and makes electrical contact with track.
- Locking Lever:** Nickel-plated steel. For mechanical/electrical connection to track.
- Track Attachment Fitting:** Die-cast aluminum with separate mechanical and electrical functions. Fitting cannot be engaged or disengaged while fixture is powered. Polarity is not a concern with ProSpec Track because of it's symmetrical positioning of circuits within the track, adapters are reversed to access one or the other circuit.
- Clamping Tabs:** Black or White, injection-molded plastic. Expands or releases gripper springs from track ledge; gripper springs hold attachment fitting securely within track.
- Embossed Keyway:** For attachment of Metallics™ OptiSpot™ shades.
- Ground Spring:** Grounds fixture to track.
- Transformer:** Electronic step-down transformer with integral radio frequency interference filter and anti-crossover circuit for increased reliability.
- Socket:** Bi-pin base ceramic socket, wired with No. 16 AWG stranded Teflon leads.
- Hot Aiming Handle:** Opening in Arm provided to aim fixture while it is on.

**Electrical/Dimming**

**Dimming controls:** Use only dimmers specifically for use with electronic transformers, such as, Lightolier Sunrise and Neptune Momentum (QE series). Low voltage fixtures may produce audible sound when used with dimmers, which may be objectionable in acoustically critical areas.

**Options and Accessories**

Accepts Metallics™ 8° & 25° OptiSpot™ or MR16 Dome Shades.  
(See Lightolier Specification Sheets 8710, 8730, & 8727M16).

**Finish**

Feature number 2 painted in White or Titanium. Other external components are brushed metal with protective clear coat.

Features 7 & 8: White on 28702WH  
Black on 28702TM

**Labels**

UL, I.B.E.W.

**US & Foreign Patents Pending**

Job Information	Type:
Job Name:	
Cat. No.:	
Lamp(s):	
Notes:	

**Lightolier** a Genlyte company  
631 Airport Road, Fall River, MA 02720 • (508) 679-8131 • Fax (508) 674-4710  
We reserve the right to change details of design, materials and finish.  
© 2005 Genlyte Group LLC • B0705