



R20 Recessed Light Extender User's Manual



Easy 1-2-3 installation

Congratulations on the purchase of the Recessed Light Extender. Once installed, you can provide directed light to specific areas around your house.

Getting Started...

The 45153 Recessed Light Extender model requires a "R20" size light bulb. You can use an incandescent, CFL or LED light bulb. Do not use a halogen light bulb.



Includes universal cover ring that fits all recessed lighting fixtures up to 8" openings



No tools required

The Recessed Light Extender is very simple to assemble and even easier to install.

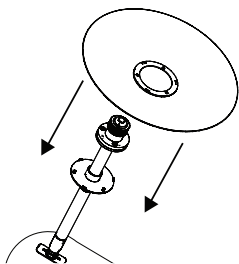
The Recessed Light Extender consists of two parts –

1. Light Assembly (ratchet screw base, rocker/swivel mount and securing collar)
2. Cover Ring (alignment pin holes, snap clip holes)

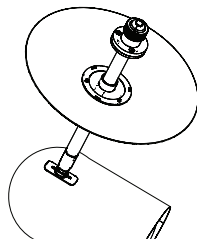
Assembly

1. Remove the Recessed Light Extender Assembly and Cover Ring from packaging. Take note of the alignment pins and snap clips on securing collar.

2. Position the Recessed Light Extender screw base through the cover ring hole. Position the Alignment pins to the alignment hole on the cover ring.

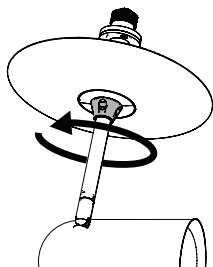


3. Firmly push the cover ring onto the securing collar snap clips until each clip snaps into place.



See back for troubleshooting

4. Loosen the adjustment ring on the securing collar and slide the collar down the shaft towards the lamp hood until the collar is just above the ring line of the swivel joint.



Your Recessed Light Extender is now ready to install.

Installation

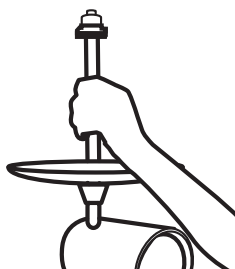
1. Turn the power off to the fixture. Simply unscrew the light bulb from the existing recessed can light. Insert the light bulb into the Recessed Light Extender and screw securely into place.

Note: For the R20 size Recessed Light Extender, use a R20 size light bulb.

Use an incandescent, CFL or LED light bulb. Not for use with halogen light bulbs.

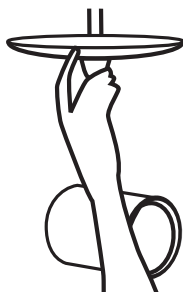


2. Screw in the Recessed Light Extender into the recessed light socket until the screw base begins to click. The Recessed Light Extender has a safety ratchet mechanism to ensure the extender cannot be screwed in too far and damage the socket.



3. Slide the cover ring up to the ceiling and tighten the adjustment ring for a snug fit. (The cover ring should cover most existing recessed light rings.)

To direct light to a specific area, hold the extender shaft and position lamp hood to desired location using the rocker/swivel mechanism.



Turn power back on...

Troubleshooting

- Ensure power to the Recessed Light Extender is turned "ON".
- Test your bulb in another fixture to ensure that the bulb is good.
- Recessed Light Extender's safety ratchet will begin to slip when the screw-in torque becomes too high. In this case the safety ratchet may begin to slip before the Recessed Light Extender is fully seated into the light socket, causing the Recessed Light Extender to not operate. These situations usually develop due to a corroded or misthreaded recessed light lamp socket. Please consult a qualified electrician if repair is required for a recessed light socket.

WARNING

RISK OF FIRE OR ELECTRIC SHOCK:

- Turn OFF power before installation, removal or re-lamping
- Do not exceed electrical ratings
- For indoor use only
- Install this kit only in the luminaires that has the construction features and dimensions shown in the photographs and/or drawings
- Do not make or alter any open holes in an enclosure of wiring or electrical components during kit installation.
- Do not alter, relocate, or remove wiring, lampholders, ballast, or any other electrical component

Made in China / Hecho en China



is a trademark of General Electric Company and is used under license to Jasco Products Company LLC, 10 E. Memorial Road, Oklahoma City, OK 73114
This Jasco product comes with a 1 year limited warranty. Visit www.jascoproducts.com for details.

Este producto de Jasco Products tiene una garantía limitada de 1 año. Visite www.jascoproducts.com para detalles.



120VAC 75W MAX

45153-2
3/26/10