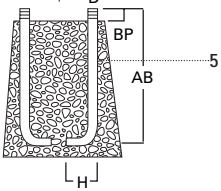
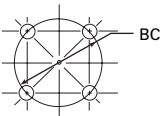
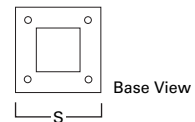
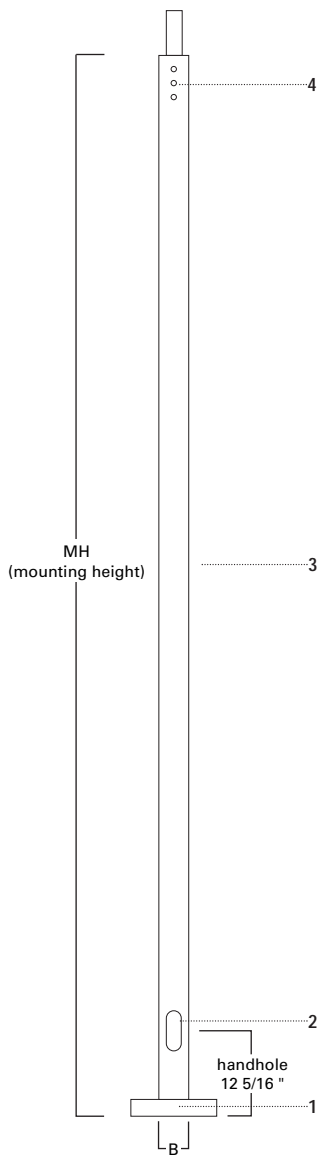
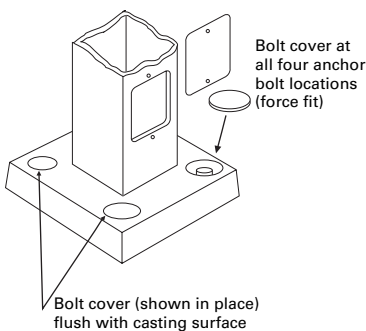


SSA SQUARE STRAIGHT ALUMINUM

8'—35' MOUNTING HEIGHT



ACCESSORIES [Base with hand hole and door]



SPECIFICATION FEATURES

- 1... 356-T6 cast aluminum alloy shoe base with aluminum alloy knock-in bolt covers.
- 2... 2" x 4" flush hand hole assembly with internal reinforcing frame (4" Shaft), 2 1/2" x 4" flush hand hole assembly (5", 6", and 6 3/4" shaft). Ground lug located opposite hand hole opening drilled & tapped for 3/8" 16NC-2 grounding screw.
- 3... Straight square shaft 6005-T6 aluminum alloy polished finish.
- 4... Drilled or Tenon (specify).
- 5... Anchor bolt per ASTM A576 with (1) nut, (1) flat washer, and (2) shims. Nuts, washers and threaded portion of bolt are hot dip galvanized.

FOUR BOLT ANCHORAGE [See ordering information]

- BC=Bolt Circle
- BP=Bolt Projection
- AB=Bolt Dimensions
- D=Bolt Diameter
- H=Bolt Dimensions

FINISH COLORS [See ordering information. Other finish colors available.]

- B=Clear Anodized
- C=Dark Bronze Anodized
- D=Black Anodized
- E=Medium Bronze Anodized
- F=Dark Bronze Powder Coat
- V=Grey Powder Coat
- W=White Powder Coat
- X=None (natural aluminum)
- Y=Black Powder Coat

WARNING: THE USE OF UNAUTHORIZED ACCESSORIES SUCH AS BANNERS, SIGNS OR PENNANTS FOR WHICH THE POLE WAS NOT DESIGNED FOR VOIDS THE COOPER LIGHTING WARRANTY AND MAY RESULT IN POLE FAILURE CAUSING SERIOUS INJURY OR PROPERTY DAMAGE. COOPER LIGHTING'S POLE WARRANTY IS ALSO VOIDED IF LUMINAIRE IS NOT INSTALLED AT TIME OF POLE INSTALLATION.

ORDERING INFORMATION

SAMPLE NUMBER: SSA4T08WXM1XG

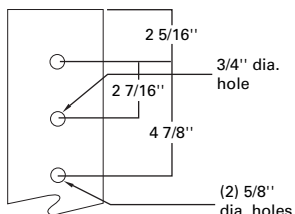
Square	Straight	Aluminum	Shaft Dia. (at base)	Wall Thickness	Mounting Height (Ft.)	Base Type	Finish	Fixture Mounting & Type	No. & Location of Arms	Arm Lengths	Accessories (Ground Lug)
S	S	A	4	T	08	W	X	M	1	X	G

Mtg. Height (Ft.)	Catalog Number ³	Shaft Size (In.)	Wall Thickness (In.)	Bolt Proj. (In.)	Bolt Circle Dia. (In.)	Anchor Bolt D x AB x H (In.)	Net. Wt. (Lbs.)	EPA (Sq. Ft.) ^{2,4} At Pole Top			EPA (Sq. Ft.) ^{2,4} 18" Above Pole Top				Max. Fixture Load—Include (Lbs.)	
								70	80	90	100	70	80	90		100
MH		B		BP	BC	AB										
8	SSA4T08WX	4	.125	1 3/4	9	3/4 x 17 x 3	23	25.0	18.6	14.0	10.7	21.0	15.5	11.6	8.9	350
10	SSA4T10WX	4	.125	1 3/4	9	3/4 x 17 x 3	28	19.0	13.7	10.0	7.3	16.5	11.8	8.6	6.3	260
12	SSA4T12WX	4	.125	1 3/4	9	3/4 x 17 x 3	32	24.0	17.5	13.2	10.0	20.8	15.2	11.3	8.6	260
15	SSA4T15WX	4	.125	1 3/4	9	3/4 x 17 x 3	39	12.9	8.9	6.1	4.2	11.3	7.8	5.4	3.7	200
15	SSA4M15WX	4	.188	1 3/4	9	3/4 x 17 x 3	55	20.7	15.0	11.0	8.1	18.5	13.0	9.7	7.2	200
15	SSA5T15WX	5	.125	2	11	3/4 x 17 x 3	52	23.0	16.4	11.7	8.5	20.3	14.5	10.5	7.6	260
18	SSA4T18WX	4	.125	1 3/4	9	3/4 x 17 x 3	46	8.3	5.1	2.9	1.3	7.6	4.6	2.6	1.2	100
18	SSA4M18WX	4	.188	1 3/4	9	3/4 x 17 x 3	66	14.3	9.7	6.5	4.2	13.0	8.8	5.9	3.8	150
18	SSA5T18WX	5	.125	2	11	3/4 x 17 x 3	61	15.9	10.5	6.9	4.3	14.4	9.5	6.2	3.9	150
18	SSA5M18WX	5	.188	2	11	3/4 x 17 x 3	85	25.6	18.2	13.0	9.2	23.5	16.4	11.6	8.3	260
20	SSA4M20WX	4	.188	1 3/4	9	3/4 x 17 x 3	72	11.0	6.9	4.1	2.1	10.0	6.3	3.7	1.9	150
20	SSA5T20WX	5	.125	2	11	3/4 x 17 x 3	66	12.3	7.5	4.2	1.9	11.1	6.8	3.9	1.7	100
20	SSA5M20WX	5	.188	2	11	3/4 x 17 x 3	94	21.0	14.3	9.7	6.3	19.5	13.2	8.8	5.8	150
25	SSA5M25WX	5	.188	2	11	3/4 x 17 x 3	115	11.6	6.5	2.8	--	10.8	6.0	2.6	--	100
25	SSA6M25WX	6	.188	2	12 1/2	1 x 36 x 4	140	21.5	13.4	7.6	3.4	20.0	12.4	7.1	3.4	260
30	SSA6X30WX	6	.250	2	12 1/2	1 x 36 x 4	215	18.7	10.8	5.4	1.5	17.6	10.0	5.0	1.4	260
30	SSA9X30WX	6 3/4	.250	2 3/4	14 1/4	1 x 36 x 4	237	30.0	19.0	11.6	6.2	28.0	18.0	11.0	6.0	260
35	SSA6X35WX ¹	6	.250	2	12 1/2	1 x 36 x 4	249	11.9	4.9	--	--	11.0	4.5	--	--	100
35	SSA9X35WX ¹	6 3/4	.250	2 3/4	14 1/4	1 x 36 x 4	274	17.5	8.6	2.5	--	16.7	8.3	2.3	--	150

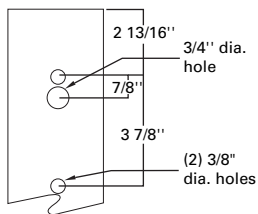
NOTES: 1 Factory installed vibration dampeners.
 2 The above E.P.A. capacities are based on loading from (1994) and pole drag coefficients from (2001) American Association of State Highway and Transportation Officials Specification.
 3 Catalog item includes one set of anchor bolts, single nuts and (2) leveling shims.
 4 EPAs based on shaft properties with wind normal to flat. EPAs calculated using base wind velocity as indicated plus 30% gust factor.

DRILLING PATTERN

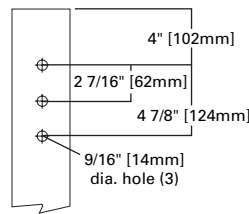
Type "M" [RCL, Landau, Galleria and Vision]



Type "E" [Concourse III]



Type "Z" [Credenza and Cirrus]



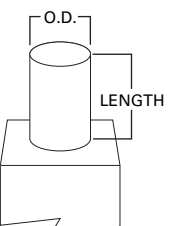
MACHINING FOR RECTANGULAR ARMS [Add as suffix]

Designation Letter & Number	Designation Letter & Number	Designation Letter & Number	Quantity & Location
M1	E1	Z1	Single
M2	E2	Z2	2 @ 180°
M3	E3	Z3	3 @ 120°
M4	E4	Z4	4 @ 90°
M5	E5	Z5	2 @ 90°

NOTES: Refer to Fixture Drilling Options on page 160.

MOUNTING OPTIONS [Add as suffix]

Fixed Tenon	Designation Number	O.D. (In.)	Length (In.)
	2	2 3/8	4
	5	3	4
	4	4	6



ACCESSORIES

- A=1/2" tapped hub¹
- B=3/4" tapped hub¹
- G=Grounding lug (max. wire #8 AWG)
- H=Additional hand hole and cover—12" below pole top—90° from hand hole.
- V=Vibration Damper

NOTES: 1 Location is 3" above base—90° from hand hole.

NOTE: Specifications and dimensions subject to change without notice.