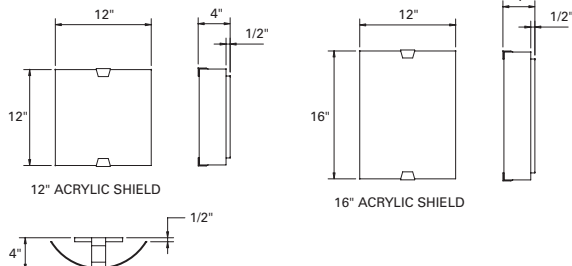


SHAPER™



662 SERIES

662 features a curved luminous shield. ADA compliant.



Sample Number: 662-12-CFL/2/13-347V-PCP

Series	Size	Lamp	Voltage	Finish	Options
662=Luminous	12"	CFL/2/13 ¹	120V	MW (standard),	ATBC
Curved Shield	16"	CFL/2/26 ¹	277V ³	CC, PB, PC, PCP,	PTBC
		CFL/2/27 ²	347V ³	PN, SAL, SB, SC,	DL
		INC/2/60 ¹		SCL, SCP, SN,	DM ⁴
				SNL	GGA
					MEM
					PSH
					FD
					GL

Notes:

- 1 Available in 12".
- 2 Available in 16".
- 3 Available with CFL only.
- 4 Consult the factory for available options.

MATERIAL

Painted white aluminum back plate. Plated or painted die-cast aluminum trim bars. Matte white sanded acrylic shield. Optional sanded plate glass, "green glass" matte acrylic, acrylic top and bottom covers and square (3/8" O.C.) perforated aluminum with matte white acrylic liner.

BALLAST

Integral electronic HPF, multi-volt 120/277V (347V Canada), thermally protected with end-of-life circuitry to accommodate the specified lamp wattage.

INSTALLATION

Supplied with a universal circular strap for a standard 4" J-box or plaster ring.

FINISH AND OPTIONS

See page 1020 for finish details and options.

LAMP/SOCKET

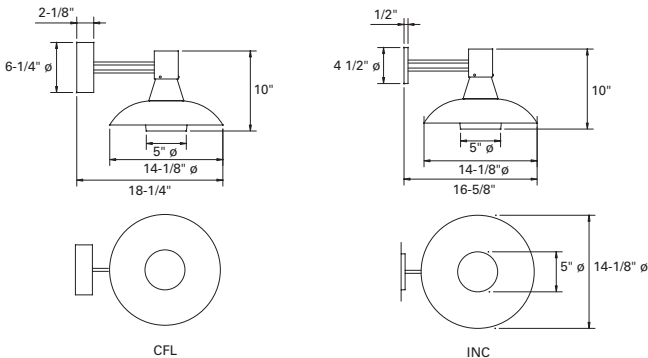
12": Two (2) 13W (2GX7) 4-pin low wattage CFL lamps or two (2) 26W (G24q-3) 4-pin quad CFL lamps or two (2) 60W frosted T-10 lamps.

16": Two (2) 27W (2G11) high lumen CFL lamps. CFL socket injection molded plastic. INC socket fired ceramic rated for 660W-250V. Lamps furnished by others.



664 SERIES

664 Direct/Indirect Luminous or Solid Shade with an arm mount bracket.



Sample Number: 664-CFL/1/32-347V-PCP

Series	Lamp	Voltage	Finish	Options
664=Solid Shade w/ Arm Mount Bracket	CFL/1/18	120V	NA (standard),	BL
	CFL/1/26	277V ¹	CC, MW, PCP,	DL
	CFL/1/32	347V ¹	SAL, SB	DM ²
	INC/1/60			REM ³

Notes:

- 1 Available with CFL only.
- 2 Consult the factory for available options.
- 3 Supplied by others.

MATERIAL

Aluminum arm and wall canopy. Metal shade is solid brass, solid copper or solid aluminum. Matte white polyethylene two piece cone.

BALLAST

Integral electronic HPF, multi-volt 120/277V (347V Canada), thermally protected with end-of-life circuitry to accommodate the specified lamp wattage.

INSTALLATION

Supplied with a universal circular strap for a standard 4" J-box or plaster ring.

LAMP/SOCKET

One (1) 18W (GX24q-2), 26W or 32W (GX24q-3) 4-pin triple CFL lamp or one (1) 60W A-19 lamp. CFL socket injection molded plastic. INC socket fired ceramic rated for 660W-250V. Lamps furnished by others.

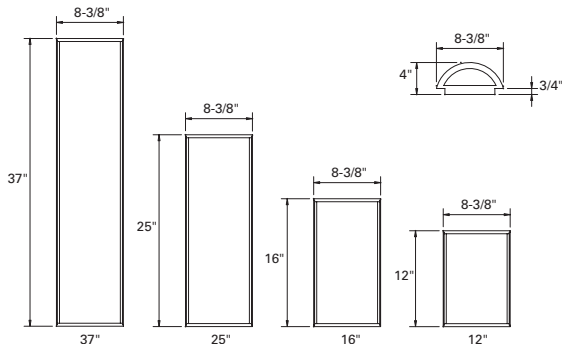
FINISH AND OPTIONS

See page 1020 for finish details and options.



673 SERIES

673 luminous Half Cylinder features a variety of decorative options such as perforated metal, colored acrylic, trim bars and is ADA compliant.



Sample Number: 673-25-T5/2/14-347V-PCP

Series	Size	Lamp	Voltage	Finish	Options
673=Luminous Half Cylinder	12"	CFL/1/18 ¹	120V	NA (standard),	2HTB
	16"	CFL/2/18 ¹	277V ⁵	CC, MW, OBRS,	2HTB/1PVTB
	25"	CFL/2/27 ²	347V ⁵	PB, PC, PCP,	2HTB/2VTB
	37"	INC/1/60 ¹		PN, SAL, SB,	2HTB/2VTB/PC
		INC/2/60 ²		SCP, SN, SNL	2PVTB
		T5/1/14 ³			2VTB
		T5/1/21 ⁴			2VTB/4WTB
		T5/2/14 ³			2VTB/PS
		T5/2/21 ⁴			3HTB/1VTB/P

Notes:

- 1 Available in 12". 2 Available in 16". 3 Available in 24". 4 Available in 37".
- 5 Available with CFL only. 6 Consult the factory for available options.
- 7 Supplied by others.

MATERIAL

Painted or plated solid aluminum with a 1/8" matte white extruded acrylic panel.

BALLAST

Integral electronic HPF, multi-volt 120/277V (347V Canada), thermally protected with end-of-life circuitry to accommodate the specified lamp wattage.

LAMP/SOCKET

12": One (1) or two (2) 18W (2G11) 4-pin high lumen CFL lamps or one (1) 60W frosted T-10 lamp.

16": Two (2) 27W (2G11) 4-pin high lumen CFL lamps or two (2) 60W frosted T-10 lamps.

25": One (1) or two (2) 14W T5 linear fluorescent lamps.

37": One (1) or two (2) 21W T5 linear fluorescent lamps. CFL lamps or two (2) 60W Frosted T-10 lamps. CFL socket injection molded plastic. Lamps furnished by others.

INSTALLATION

Supplied with a universal circular strap for a standard 4" J-box or plaster ring.

FINISH AND OPTIONS

See page 1020 for finish details and options.