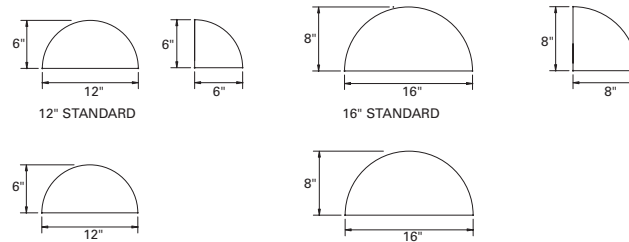




694-WP SERIES

694-WP Classic Quarter Sphere features bronze construction and is available in two sizes.



Sample Number: 694-WP-16-CFL/2-277V-GM

Series	Size	Lamp	Voltage	Finish ^{5, 6}	Options
694-WP = Classic Quarter Sphere	12"	CFL/1 (26/32W-Triple) ¹	120V	NBZ (standard),	C
	16"	CFL/2 (26/32W-Triple) ²	277V ³	BK, BM, CC, DP,	QR ⁷
		INC/1/751	347V ⁴	GM, GRM, GY,	TGL ⁷
		INC/2/752		SCL, SM, SNL,	
		MH/1/502		VG, WH	
		MH/1/702			

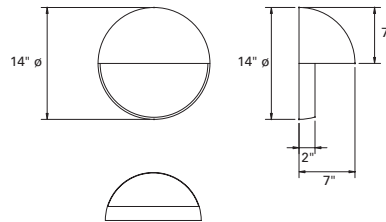
Notes:

1. Available in 12".
2. Available in 16".
3. CFL and MH only.
4. Available with CFL only.
5. Premium TGIC polyester powder coat paint, 2.5 mil nominal thickness for superior protection against fade and wear.
6. Bronze will weather to a dark bronze patina.
7. MH only.



694-WP-RB SERIES

694-WP-RB Classic Quarter Sphere with Round Back Panel features bronze construction.



Sample Number: 694-WP-RB-INC/1/60-120V-GM

Series	Lamp	Voltage	Finish ^{3, 4}	Options
694-WP-RB = Classic Quarter Sphere w/ Round Back Panel	CFL/1 (26/32/42W-Triple)	120V	NBZ (standard),	C
	INC/1/60	277V ¹	BK, BM, CC, DP,	QR ⁵
	MH/1/50	347V ²	GM, GRM, GY,	
	MH/1/70		SM, VG, WH	
	MH/1/100			

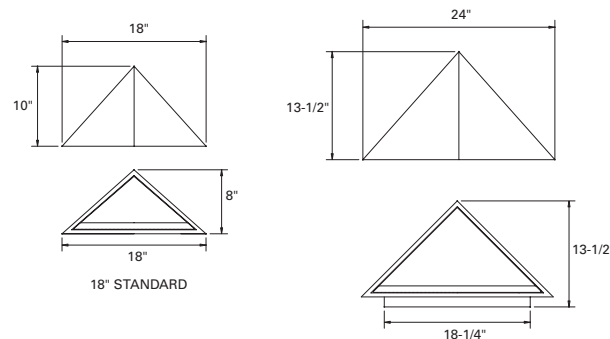
Notes:

1. CFL and MH only.
2. Available with CFL only.
3. Premium TGIC polyester powder coat paint, 2.5 mil nominal thickness for superior protection against fade and wear.
4. Bronze will weather to a dark bronze patina.
5. MH only.



695-WP SERIES

695-WP Half Pyramid with direct illumination.



Sample Number: 695-WP-24-CFL/2-277V-GM

Series	Size	Lamp	Voltage	Finish ⁵	Options
695-WP = Half Pyramid	18"	CFL/1 (26/32W-Triple)	120V	NBZ (standard),	C
	24"	CFL/2 (26/32W-Triple)	277V ³	BK, BM, CC, DP,	PH
		INC/1/75 ¹	347V ⁴	GM, GRM, GY,	QR ⁶
		INC/2/75 ²		SCL, SM, SNL,	TGL ⁶
		MH/1/50 ²		WH	
		MH/1/70 ²			
		MH/1/100 ²			

Notes:

1. Available in 18".
2. Available in 24".
3. CFL and MH only.
4. Available with CFL only.
5. Bronze will weather to a dark bronze patina.
6. MH only.

MATERIAL

Solid bronze with a 1/8" white acrylic diffuser for CFL/Incandescent and clear tempered refractive glass for MH.

BALLAST

Integral electronic HPF, multi-volt 120/277V (347V Canada), thermally protected with end-of-life circuitry to accommodate the specified lamp wattage. Metal halide ballast are HPF core & coil type, multi-volt 120/277V for the specified lamp wattage. 347V ballast for metal halide - Contact factory.

FINISH AND OPTIONS

See page 1020 for finish details and options.

INSTALLATION

Supplied with a mounting back for a standard 4" J-box or stucco ring. Optional rear (through wall) feed conduit mounting.

LAMP/SOCKET

12": One (1) 26W or 32W (GX24q-3) triple CFL lamp, or one (1) 75W A-19 lamp.
16": Two (2) 26W or 32W (GX24q-3) triple CFL lamps, one (1) 50W or 70W ED-17 metal halide lamp or two (2) 75W A-19 lamps. CFL socket injection molded plastic. MH socket ceramic pulse-rated, 4KV. INC socket fired ceramic rated for 660W/250V. Lamps furnished by others.

MATERIAL

Solid bronze with a white acrylic diffuser for CFL and Incandescent and clear tempered refractive glass for MH.

BALLAST

Integral electronic HPF, multi-volt 120/277V (347V Canada), thermally protected with end-of-life circuitry to accommodate specified lamp wattage. Metal halide ballasts are electronic HPF, multi-volt 120/277V for the specified lamp wattage. 347V ballast for metal halide - Contact factory.

INSTALLATION

Supplied with a mounting back for a standard 4" J-box or stucco ring. Optional rear (through wall) feed conduit mounting.

LAMP/SOCKET

One (1) 26W, 32W (GX24q-3) or 42W (GX24q-4) triple CFL lamp, one (1) 50W, 70W or 100W ED-17 metal halide lamp or one (1) 60W A-19 lamp. CFL socket injection molded plastic. Metal halide socket is ceramic pulse-rated, 4KV. INC socket fired ceramic rated for 660W/250V. Lamps furnished by others.

FINISH AND OPTIONS

See page 1020 for finish details and options.

MATERIAL

Solid bronze construction with a clear textured refractive glass lens for MH or white acrylic lens for incandescent and CFL lamps. Optional tempered clear lens for full cut-off applications.

BALLAST

Integral electronic CFL HPF multi-volt 120V/277V (347V Canada), thermally protected with end-of-life circuitry to accommodate specified lamp wattage. Integral metal halide ballast is magnetic HPF, coil and core multi-volt 120/277V for the specified lamp wattage. 347V ballast for metal halide - Contact factory.

FINISH AND OPTIONS

See page 1020 for finish details and options.

INSTALLATION

Supplied with a universal mounting back for a standard 4" J-box or plaster ring. Optional rear (through wall) feed conduit mounting.

LAMP/SOCKET

18": One (1) 26W or 32W (GX24q-3) 4-pin triple tube CFL lamp or one (1) 75W A-19 lamp.
24": Two (2) 26W or 32W (GX24q-3) 4-pin triple tube CFL lamps or one (1) 50W, 70W or 100W ED-17 metal halide lamp or two (2) 75W A-19 lamps. CFL socket injection molded plastic. INC socket fired ceramic rated for 660W/250V. Metal halide socket is ceramic pulse-rated, 4KV. Lamps furnished by others.