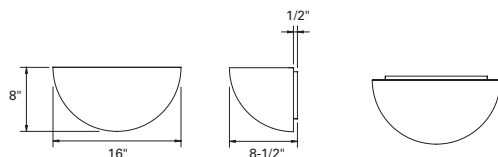


SHAPER™



641 SERIES

641 Quarter Sphere Wall Sconce features indirect illumination and is offered in three sizes.



Sample Number: 641-16-CFL/2-347V-PCP

Series	Size	Lamp	Voltage	Finish	Options
641=Wall Sconce	10"	CFL/1/26 ¹	120V	MW (standard),	BHL ⁵
	12"	CFL/2/13 ³	277V ⁴	CC, MB, OBRS,	WHL ⁵
	16"	CFL/2/26 ^{2,3}	347V ⁴	PB, PC, PCP, PN,	DL
		CFL/2/32 ²		SB, SC, SCL,	REM ⁶
		INC/1/75 ¹		SCP, SN, SNL	TGL ⁷
		INC/1/100 ³			
		INC/2/100 ²			
Notes:					
1 Available in 10".					
2 Available in 16".					
3 Available in 12".					
4 CFL and MH only.					
5 Available with CFL only.					
6 Supplied by others.					
7 MH only.					

MATERIAL

Painted or plated cold-rolled steel base metal. Optional hexcel top louver, painted white or black aluminum.

INSTALLATION

Supplied with a universal circular strap for a standard 4" J-box or plaster ring.

FINISH AND OPTIONS

See page 1020 for finish details and options.

BALLAST

Integral electronic HPF, multi-volt 120/277V (347V Canada), thermally protected with end-of-life circuitry to accommodate the specified CFL wattage. Metal halide ballast are HPF magnetic, multi-volt 120V/277V for the specified wattage. Contact factory for 347V.

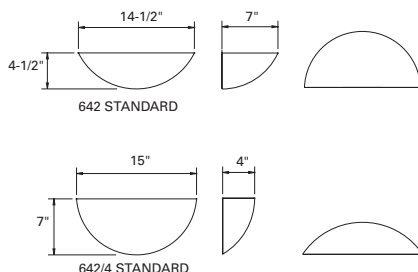
LAMP/SOCKET

10": One (1) 26W (G24q-3) 4-pin quad CFL lamps or one (1) 75W A-19 lamp. **12"**: Two (2) 13W (2GX7) 4-pin low wattage CFL lamps, two (2) 26W (G24q-3) 4-pin quad CFL lamps or one (1) 100W A-19 lamp. **16"**: Two (2) 26W or 32W (GX24q-3) 4-pin triple tube CFL lamps, one (1) 0/70/100W open burn metal halide ED-17 lamp, one (1) 300W T-3 linear halogen double-ended lamp or two (2) 100W A-19 lamps. CFL socket injection molded plastic top. Metal halide socket is ceramic pulse-rated, 4KV. INC socket fired ceramic rated for 660W-250V. Lamps furnished by others.



642 & 642/4 SERIES

The 642 Quarter Sphere Wall Sconce features indirect illumination and is offered in two profiles. The 642/4 is ADA compliant.



Sample Number: 642/4-CFL/1/26-347V-MW

Series	Lamp	Voltage	Finish	Options
642=Wall Sconce	CFL/1/13 ¹	120V	MB, MW (standard),	2TRB REM ^{3,4}
642/4=ADA Compliant	CFL/1/26	277V ²	CC, OBRS, PB, PC,	2TRP BBF
Wall Sconce	CFL/1/32	347V ²	SAL, SB, SC, SCL	TR DF
	INC/1/100			ACB SF
				CT BHL
				DL HL
				WHL

Notes:
1 Available with 642/4 Series.
2 Available with CFL only.
3 Supplied by others.
4 Available with 642 Series.

MATERIAL

Painted or plated cold-rolled steel base metal. Hexcel louver, painted black or white aluminum.

BALLAST

Integral electronic HPF, multi-volt 120/277V (347V Canada), thermally protected with end-of-life circuitry to accommodate the specified lamp wattage.

INSTALLATION

Supplied with a universal circular strap for a standard 4" J-box or plaster ring.

LAMP/SOCKET

642: One (1) 26W or 32W (GX24q-3) 4-pin triple CFL lamp or one (1) 100W A-19 lamp. **642/4**: One (1) 13W (2GX7) 4-pin low wattage CFL lamp, one (1) 26W (G24q-3) quad CFL lamp or one 100W A-19 lamp CFL socket injection molded plastic. INC socket fired ceramic rated for 660W-250V. Lamps furnished by others.

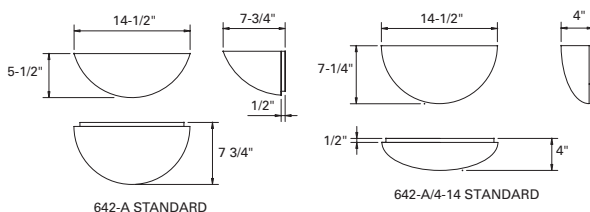
FINISH AND OPTIONS

See page 1020 for finish details and options.



642-A & 642-A/4 SERIES

642-A Luminous Tapered Quarter Sphere features soft forward and indirect illumination and is available in two sizes. 642-A/4 is ADA compliant.



Sample Number: 642-A/4-14-CFL/1/13-347V-PCP

Series	Size	Lamp	Voltage	Finish	Options
642-A=Luminous Tapered	14"	CFL/1/13 ^{2,1}	120V	MW (standard),	2TRB
Quarter Sphere	18" ¹	CFL/2/13 ^{3,4,1}	277V ⁵	CC, OBRS, PB,	2TRP
642-A/4=ADA Compliant		CFL/2/26 ⁴	347V ⁵	PC, PCP, PN,	TR
Luminous Tapered		INC/1/60 ^{3,1}		SAL, SB, SC,	BBF
Quarter Sphere		INC/1/75 ⁴		SCL, SCP, SN,	SF
				SNL	CT
					DL
					MEM ⁴
					REM ^{6,1}
					FD
					HL

Notes:
1 Available with 642-A/4 Series.
2 Available in 14".
3 Available in 18".
4 Available with 642-A Series.
5 Available with CFL only.
6 Supplied by others.

MATERIAL

Pre-painted white aluminum back plate with a matte white sphere. Optional natural aluminum hexcel top louver. Solid brass, stainless steel or painted steel trims.

INSTALLATION

Supplied with a universal circular strap for a standard 4" J-box or plaster ring.

LAMP/SOCKET

642-A: Two (2) 13W (2GX7) 4-pin low wattage CFL lamps, two (2) 26W (G24q-3) 4-pin quad CFL lamps or one (1) 75W A-19 lamp. **642-A/4-14"**: One (1) 13W (2GX7) 4-pin low wattage CFL lamp. **642-A/4-18"**: Two (2) 13W (2GX7) 4-pin low wattage CFL lamps or one (1) 60W T-10 lamp. CFL socket injection molded plastic. INC socket fired ceramic rated for 660W-250V. Lamps furnished by others.

BALLAST

Integral electronic HPF, multi-volt 120/277V (347V Canada), thermally protected with end-of-life circuitry to accommodate the specified lamp wattage.

FINISH AND OPTIONS

See page 1020 for finish details and options.