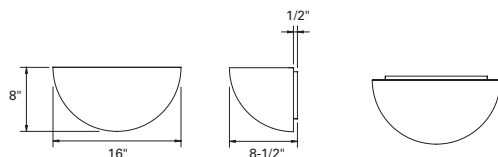


# SHAPER™



## 641 SERIES

641 Quarter Sphere Wall Sconce features indirect illumination and is offered in three sizes.



Sample Number: 641-16-CFL/2-347V-PCP

Series	Size	Lamp	Voltage	Finish	Options
641=Wall Sconce	10"	CFL/1/26 <sup>1</sup>	120V	MW (standard),	BHL <sup>5</sup>
	12"	CFL/2/13 <sup>3</sup>	277V <sup>4</sup>	CC, MB, OBRS,	WHL <sup>5</sup>
	16"	CFL/2/26 <sup>2,3</sup>	347V <sup>4</sup>	PB, PC, PCP, PN,	DL
		CFL/2/32 <sup>2</sup>		SB, SC, SCL,	REM <sup>6</sup>
		INC/1/75 <sup>1</sup>		SCP, SN, SNL	TGL <sup>7</sup>
		INC/1/100 <sup>3</sup>			
		INC/2/100 <sup>2</sup>			
Notes:					
1 Available in 10".					
2 Available in 16".					
3 Available in 12".					
4 CFL and MH only.					
5 Available with CFL only.					
6 Supplied by others.					
7 MH only.					

### MATERIAL

Painted or plated cold-rolled steel base metal. Optional hexcel top louver, painted white or black aluminum.

### INSTALLATION

Supplied with a universal circular strap for a standard 4" J-box or plaster ring.

### FINISH AND OPTIONS

See page 1020 for finish details and options.

### BALLAST

Integral electronic HPF, multi-volt 120/277V (347V Canada), thermally protected with end-of-life circuitry to accommodate the specified CFL wattage. Metal halide ballast are HPF magnetic, multi-volt 120V/277V for the specified wattage. Contact factory for 347V.

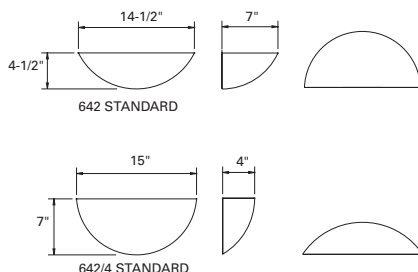
### LAMP/SOCKET

**10"**: One (1) 26W (G24q-3) 4-pin quad CFL lamps or one (1) 75W A-19 lamp. **12"**: Two (2) 13W (2GX7) 4-pin low wattage CFL lamps, two (2) 26W (G24q-3) 4-pin quad CFL lamps or one (1) 100W A-19 lamp. **16"**: Two (2) 26W or 32W (GX24q-3) 4-pin triple tube CFL lamps, one (1) 0/70/100W open burn metal halide ED-17 lamp, one (1) 300W T-3 linear halogen double-ended lamp or two (2) 100W A-19 lamps. CFL socket injection molded plastic top. Metal halide socket is ceramic pulse-rated, 4KV. INC socket fired ceramic rated for 660W-250V. Lamps furnished by others.



## 642 & 642/4 SERIES

The 642 Quarter Sphere Wall Sconce features indirect illumination and is offered in two profiles. The 642/4 is ADA compliant.



Sample Number: 642/4-CFL/1/26-347V-MW

Series	Lamp	Voltage	Finish	Options
642=Wall Sconce	CFL/1/13 <sup>1</sup>	120V	MB, MW (standard),	2TRB REM <sup>3,4</sup>
642/4=ADA Compliant	CFL/1/26	277V <sup>2</sup>	CC, OBRS, PB, PC,	2TRP BBF
Wall Sconce	CFL/1/32	347V <sup>2</sup>	SAL, SB, SC, SCL	TR DF
	INC/1/100			ACB SF
				CT BHL
				DL HL
				WHL

Notes:  
1 Available with 642/4 Series.  
2 Available with CFL only.  
3 Supplied by others.  
4 Available with 642 Series.

### MATERIAL

Painted or plated cold-rolled steel base metal. Hexcel louver, painted black or white aluminum.

### BALLAST

Integral electronic HPF, multi-volt 120/277V (347V Canada), thermally protected with end-of-life circuitry to accommodate the specified lamp wattage.

### INSTALLATION

Supplied with a universal circular strap for a standard 4" J-box or plaster ring.

### LAMP/SOCKET

**642**: One (1) 26W or 32W (GX24q-3) 4-pin triple CFL lamp or one (1) 100W A-19 lamp. **642/4**: One (1) 13W (2GX7) 4-pin low wattage CFL lamp, one (1) 26W (G24q-3) quad CFL lamp or one 100W A-19 lamp CFL socket injection molded plastic. INC socket fired ceramic rated for 660W-250V. Lamps furnished by others.

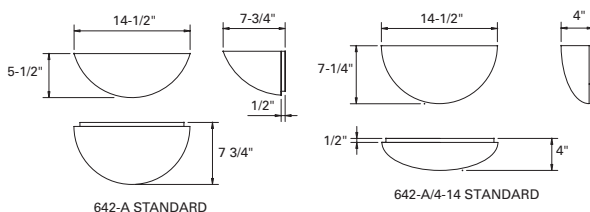
### FINISH AND OPTIONS

See page 1020 for finish details and options.



## 642-A & 642-A/4 SERIES

642-A Luminous Tapered Quarter Sphere features soft forward and indirect illumination and is available in two sizes. 642-A/4 is ADA compliant.



Sample Number: 642-A/4-14-CFL/1/13-347V-PCP

Series	Size	Lamp	Voltage	Finish	Options
642-A=Luminous Tapered	14"	CFL/1/13 <sup>2,1</sup>	120V	MW (standard),	2TRB
Quarter Sphere	18" <sup>1</sup>	CFL/2/13 <sup>3,4,1</sup>	277V <sup>5</sup>	CC, OBRS, PB,	2TRP
642-A/4=ADA Compliant		CFL/2/26 <sup>4</sup>	347V <sup>5</sup>	PC, PCP, PN,	TR
Luminous Tapered		INC/1/60 <sup>3,1</sup>		SAL, SB, SC,	BBF
Quarter Sphere		INC/1/75 <sup>4</sup>		SCL, SCP, SN,	SF
				SNL	CT
					DL
					MEM <sup>4</sup>
					REM <sup>6,1</sup>
					FD
					HL

Notes:  
1 Available with 642-A/4 Series.  
2 Available in 14".  
3 Available in 18".  
4 Available with 642-A Series.  
5 Available with CFL only.  
6 Supplied by others.

### MATERIAL

Pre-painted white aluminum back plate with a matte white sphere. Optional natural aluminum hexcel top louver. Solid brass, stainless steel or painted steel trims.

### INSTALLATION

Supplied with a universal circular strap for a standard 4" J-box or plaster ring.

### LAMP/SOCKET

**642-A**: Two (2) 13W (2GX7) 4-pin low wattage CFL lamps, two (2) 26W (G24q-3) 4-pin quad CFL lamps or one (1) 75W A-19 lamp. **642-A/4-14"**: One (1) 13W (2GX7) 4-pin low wattage CFL lamp. **642-A/4-18"**: Two (2) 13W (2GX7) 4-pin low wattage CFL lamps or one (1) 60W T-10 lamp. CFL socket injection molded plastic. INC socket fired ceramic rated for 660W-250V. Lamps furnished by others.

### BALLAST

Integral electronic HPF, multi-volt 120/277V (347V Canada), thermally protected with end-of-life circuitry to accommodate the specified lamp wattage.

### FINISH AND OPTIONS

See page 1020 for finish details and options.