

DESCRIPTION

497-RP features a 22" Luminous Hand Crafted Curved Square Glass Pendant designed for low ceiling applications with a C82428350 horizontal downlight by Portfolio(TM).

Catalog #		Type
Project		
Comments		Date
Prepared by		

SPECIFICATION FEATURES

Material

Pendant: 22" Curved square, hand-crafted, BULLSEYE clear glass with a colorful sprinkling of frits with glass threads and stringers that fuse, twist and curve under the force of the molten glass into a lively cascade. Hand fused to an opaque white glass for structure and lamp uniformity. Solid brass or aluminum cable finials with four stainless steel aircraft cable attachments.

Downlight: Portfolio(TM) one piece precision die cast aluminum 1-1/2" deep collar accommodates varying dimensions of ceiling materials. Precisely formed one piece, clear Alzak®, non-imaging optical reflector ensures 55° cut-off to lamp and lamp image.

Finish

Finials/Trim Finish
Standard: Matte White (MW)
Premium: Natural Aluminum (NA) [Sustainable Design], Lacquered Aluminum (SAL), Satin Chrome (SC), Lacquered Satin Chrome (SCL), Polished Chrome (PC), Satin Nickel (SN), Lacquered Satin Nickel (SNL), Polished Nickel (PN), Oxidized Brass (OBRS), Satin Brass (SB), Polished Brass (PB), Satin Copper (SCP), Polished Copper (PCP), Oxidized Copper (OCP),

Finish (Cont.)

Gun Metal (GNM) or Custom Colors (CC). Contact factory for damp location.

Glass Colors: Mardi Gras Fused Glass - Royal Blue & Turquoise Frit and Streamers (BTMG), Mardi Gras Fused Glass - Dark Green & Jade Green Frit with Dark Green Streamers (GRMG), Mardi Gras Fused Glass - Gray & Black Frit with White Streamers (GBMG), Mardi Gras Fused Glass - Red Frit and Streamers (RDMG) or Mardi Gras Fused Glass - Gray & Bronze Frit with Gray & Vanilla Streamers (GYMG).

Optics

Refer to www.shaperlighting.com for complete photometrics.

Ballast

One (1) integral, multi-voltage (120V/277V), electronic CFL (347V Canada) ballast for a 26W, 32W or 42W CFL lamps. Provides flicker free and noise free operation and starting.

Lamp/Socket

Two (2) 26W, 32W (GX24q-3) or 42W(GX24q-4) 4-pin triple CFL lamps. Universal 4-pin CFL socket injection molded plastic with fatigue free stainless steel lamp spring ensures positive lamp retention. Lamps furnished by others.

Installation

Decorative square assembly is securely suspended from the mounting ring by four stainless steel cables (provided). Listed for eight #12AWG (four in, four out) 90°C conductors feed through branch wiring. One 1/2" and two 3/4" pry outs. Positioned to allow straight conduit runs. Access to junction box by removing reflector. Accepts 1/2" EMT, C Channel, T-bar fasteners, and bar hangers. Adjusts 5" vertically from above or below ceiling. Positive reflector mounting, without tools, pulls trim tight to ceiling. No measuring, cutting or adjustment of cables is required to achieve standard overall height and level mounting. Contractor to provide appropriate structural support for the fixture's weight.

Options

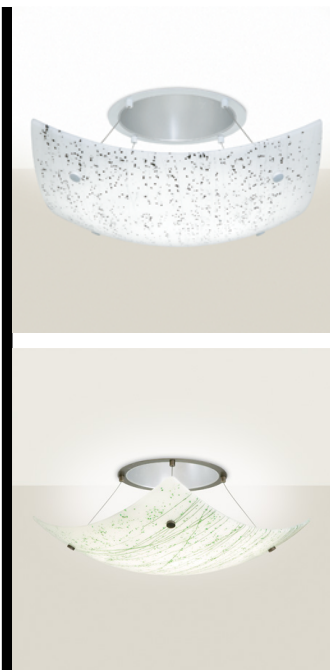
Refer to the downlight spec sheet for options, MH Lamping - contact factory.

Labels

U.L. and C.U.L. listed. Downlight is standard damp label.

Modifications

Contact the factory regarding scale options, unique finishes, mounting, additional materials/ colors, or decorative detailing.



497-RP SERIES

Recessed Pendant
Luminaire
Luminous
Hand-Crafted
Curved, Square
Glass Bowl



ORDERING INFORMATION

Sample Number: 497-RP-CFL/2/-120V-SC-SC-BTMG

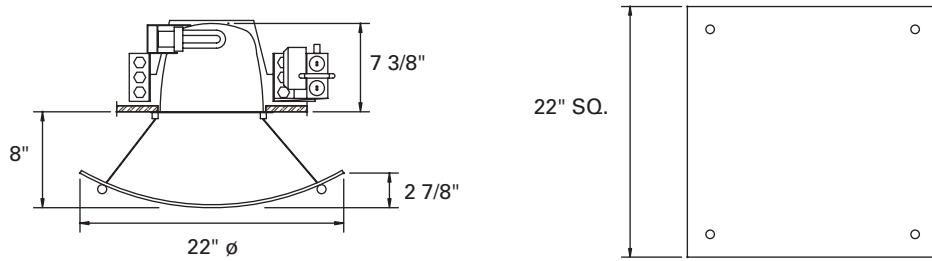
Series 497-RP = 22" Pendant	Pendant/Finial Finish <u>Standard</u> MW=Matte White <u>Premium</u> CC= Custom Color NA = Natural Aluminum PB= Polished Brass PC= Polished Chrome PCP= Polished Copper PN = Polished Nickel OBRS = Oxidized Brass SAL= Lacquered Aluminum SB=Satin Brass SC =Satin Chrome SCL =Lacquered Satin Chrome SCP =Satin Copper SN =Satin Nickel SNL =Lacquered Satin Nickel OCP = Oxidized Copper GNM= Gun Metal	Ring/Hardware Finish <u>Standard</u> MW=Matte White <u>Premium</u> CC= Custom Color NA = Natural Aluminum PB= Polished Brass PC= Polished Chrome PCP= Polished Copper PN = Polished Nickel OBRS = Oxidized Brass SAL= Lacquered Aluminum SB =Satin Brass SC =Satin Chrome SCL =Lacquered Satin Chrome SCP =Satin Copper SN =Satin Nickel SNL =Lacquered Satin Nickel OCP = Oxidized Copper GNM= Gun Metal	Glass Finish (Mardi Gras Fused Glass) BTMG = Royal Blue & Turquoise Frit & Streamers GRMG = Dark Green & Jade Green Frit with Dark Green Streamers GBMG = Gray & Black Frit with White Streamers RDMG = Red Frit & Streamers GYMG = Gray & Bronze Frit with Gray & Vanilla Streamers	Options DL =Damp Location EM =Emergency Battery Pack FB = Hand Painted Faux Alabaster Bowl LNB= Hand Painted Faux Line Bowl
--	---	---	--	--

SUSTAINABLE DESIGN

Shaper has a long-standing history of offering environmentally-friendly fixtures. The copper and bronze alloys used in our exterior luminaires feature up to 98% recycled content, contribute less undesirable air emissions compared to painted aluminum and are easy to recycle.

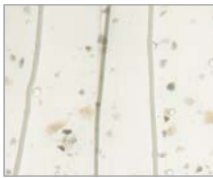
Refer to the Icon Legend
Link on shaperlighting.com.

DIMENSIONS



497-RP Standard

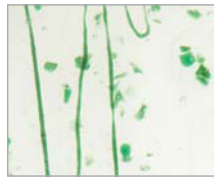
GLASS COLORS



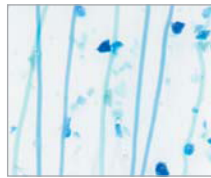
Gray & Bronze Frit with Gray & Vanilla Streamers (GYMG).



Gray & Black Frit with White Streamers (GBMG)



Dark Green & Jade Green Frit with Dark Green Streamers (GRMG)



Royal Blue & Turquoise Frit and Streamers (BTMG)



Red Frit and Streamers (RDMG)