

DESCRIPTION

The 474 Drum Pendant features Bold Trim and is available in two diameters with multiple mounting options.

Catalog #	Type
Project	
Comments	Date
Prepared by	

SPECIFICATION FEATURES

Material/Mounting

Solid aluminum or solid brass with matte acrylic panels.

Three Stem (Standard): Three 3/8" stems with a standard height of 24" (OA), minimum 18" (OA). Maximum overall hang height for one piece stem assembly is 5' (OA). 5' to 25' a 5/8" Collector Body (CB) will be provided. Contact factory for lengths above 25'. Specify SCA for sloped ceilings up to 45°.

Finish

Standard: Natural Aluminum (NA) [Sustainable Design]. Premium: Matte White (MW), Lacquered Satin Aluminum (SAL), Lacquered Polished Aluminum (PAL), Satin Brass (SB), Polished Brass (PB), Oxidized Brass (OBRs), Satin Copper (SCP), Polished Copper (PCP), Oxidized Copper (OCP), Satin Nickel (SN), Polished Nickel (PN), Lacquered Satin Nickel (SNL), Gun Metal (GNM) or Custom Color (CC).

Optics

Refer to www.shaperlighting.com for complete photometrics.

Ballast

Integral electronic HPF, multi-volt 120/277V (347V Canada), thermally protected with end-of-life circuitry to accommodate the specified lamp wattage.

Lamp/Socket

24": Four (4) 27W (2G11) high lumen CFL lamps or three (3) 75W A-19 lamps.
30": Four (4) 40W (2G11) high lumen CFL lamps or three (3) 100W A-19 lamps.
CFL socket injection molded plastic. INC socket fired ceramic rated for 660W-250V. Lamps furnished by others.

Installation

Supplied with either a circle strap mounting canopy or bar strap that mounts to a 4" J-box or plaster ring. Integral safety cable provided.

Options

Hand Painted Faux Alabaster Panels (FP), Hand Painted Faux Linen Panels (LNP), Dimming Ballast (except 27W) - Contact factory for ballast options CFL (DM), Sloped Ceiling Adaptor - (Single, Triple Stem & Multi-Bowls only) - Specify up to 45° (SCA), Perforated Band (PFB), Decorative Finial (DF), Cobalt Blue Inserts (CBI), Decorative Finial with Ball (DFB), Circular Trim Bar (CTB), Remote Emergency Battery - Supplied by others (REM), Integral Emergency Battery (30") (IEM), Damp Location (DL): All Painted Finishes and Lacquered Satin Nickel (SNL) finishes only. MRI Applications (INC only) - Contact Factory.

Labels

U.L. and C.U.L approved for indoor and damp location. See options for damp location finishing requirements.

Modifications

Contact the factory regarding scale options, unique finishes, mounting, additional materials/colors, or decorative detailing.



474 SERIES

Pendant Luminaire
Drum with Bold Trim



ORDERING INFORMATION

Sample Number: 474-30-CFL/4/40-277V-PCP-24

Series	Lamp	Finish	Options	Suspension Height
474 =Drum w/ Bold Trim	CFL/4/27 ¹ CFL/4/40 ² INC/3/75 ¹ INC/3/100 ²	<u>Standard</u> NA =Natural Aluminum <u>Premium</u> CC =Custom Color MW =Matte White OBRs =Oxidized Brass PAL =Lacquered Polished Aluminum PB =Polished Brass PCP =Polished Copper PN =Polished Nickel SAL =Lacquered Satin Aluminum SB =Satin Brass SCP =Satin Copper SN =Satin Nickel SNL =Lacquered Satin Nickel	1S =Single Stem TSS2D =Triple Stem Suspended Double Drum TSS3D =Triple Stem Suspended Triple Drum TSS4D =Triple Stem Suspended Four Drum CBI =Cobalt Blue Inserts DL =Damp Location ⁸ DM =CFL Dimming Ballast ^{4,5} IEM =Integral Emergency Ballast ² REM =Remote Emergency Battery ⁶ SCA =Sloped Ceiling Adapter ⁷ CTB =Circular Trim Bar DF =Decorative Finial DFB =Decorative Finial w/ Ball FP =Hand Painted Faux Alabaster Panels PFB =Perforated Band LNP = Hand Painted Faux Linen Panels	24" or specify

Notes:

- Available in 24".
- Available in 30".
- Available with CFL only.
- Not available in 27W.
- Consult the factory for available options.
- Supplied by others.
- Specify up to 45°.
- Interior applications only.



Shaper has a long-standing history of offering environmentally-friendly fixtures. The copper and bronze alloys used in our exterior luminaires feature up to 98% recycled content, contribute less undesirable air emissions compared to painted aluminum and are easy to recycle.

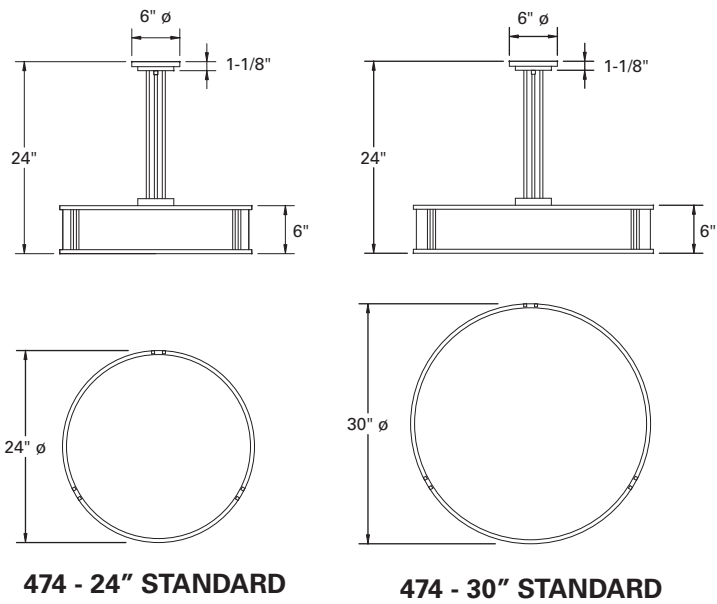


MAGNETIC
RESONANCE
IMAGING (MRI)

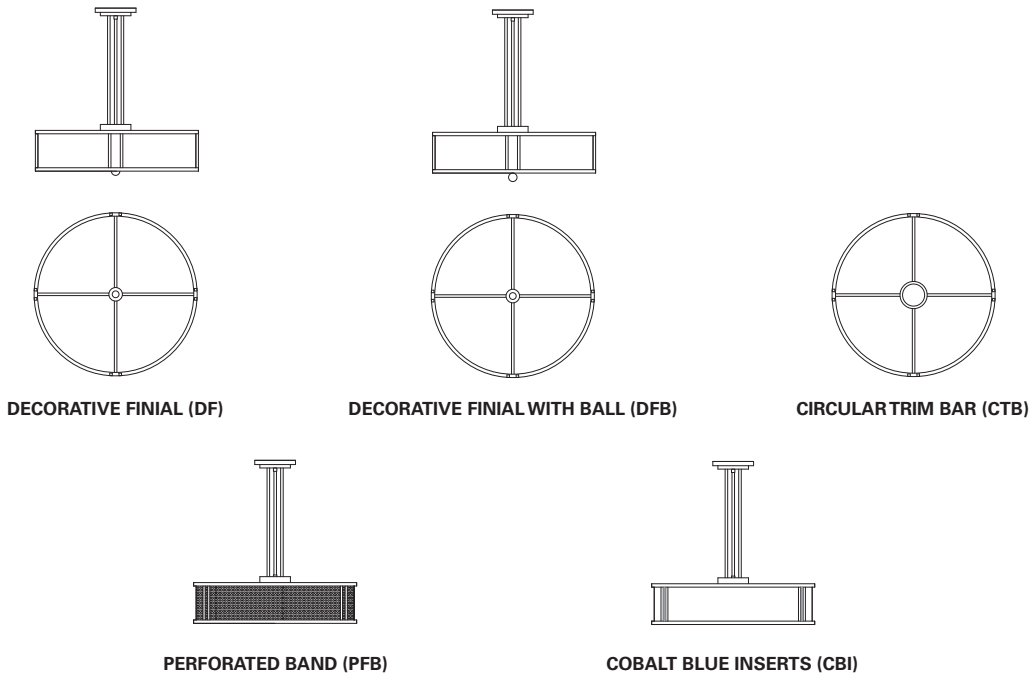
Lighting fixtures for MRI facilities are specialized and unique, requiring non-ferrous construction. Fluorescent fixtures cannot be used due to the ferrous parts in ballasts and lampholders. Modified incandescent fixtures meet the requirements.

Refer to the Icon Legend
Link on shaperlighting.com.

DIMENSIONS



474 OPTIONS



COMPANION PRODUCTS



Single Stem (1S): 5/8" stem with a standard hang height of 24" (OA), minimum. Maximum overall hang height for one piece stem assembly is 8' (OA). 9' to 30' (OA) stems are supplied in multiple sections. Supplied with a swivel canopy which will accommodate up to 45° adjustment.

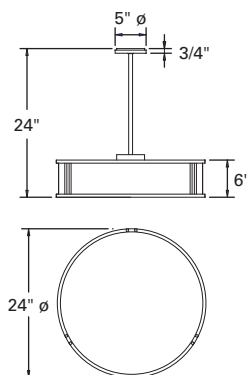
Triple Stem Suspended Double Drum (TSS2D): Three 3/8" stems with a standard hang height of 30" (OA), minimum. Maximum overall hang height for one piece stem assembly is 5' (OA). Lengths from 5' to 25' a 5/8" Collector Body (CB) will be provided. Contact factory for lengths above 25'. Standard bowl stem length is 5"; contact factory for custom lengths. Specify SCA for sloped ceilings up to 45°.

Triple Stem Suspended Triple Drum (TSS3D): Three 3/8" stems with a standard hang height of 30" (OA), minimum. Maximum overall hang height for one piece stem assembly is 5' (OA). Lengths from 5' to 25' a 5/8" Collector Body (CB) will be provided. Contact factory for lengths above 25'. Specify SCA for sloped ceilings up to 45°.

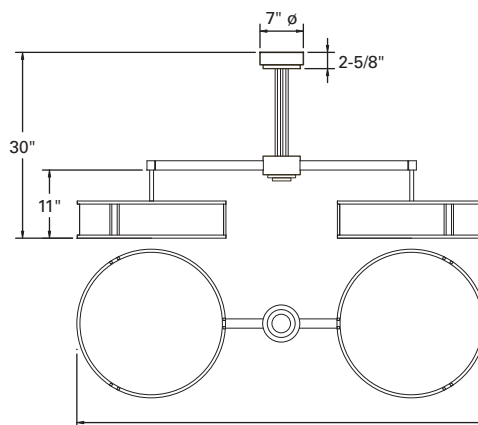
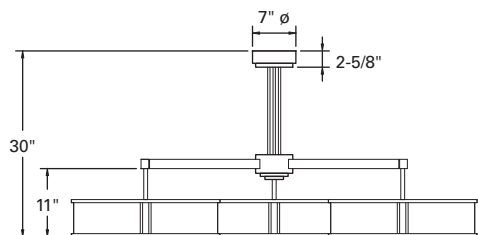
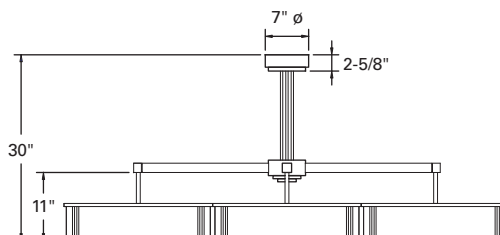
Triple Stem Suspended Four Drum (TSS4D): Three 3/8" standard stems with a standard hang height of 30" (OA), minimum. Maximum overall hang height for one piece stem assembly is 5' (OA). Lengths from 5' to 25' a 5/8" Collector Body (CB) will be provided. Contact factory for lengths above 25'. Specify SCA for sloped ceilings up to 45°.

Installation

Multi-Bowl Pendants: Contractor to provide appropriate structural support for fixture weight. Refer to installation drawings for details. Integral safety cable provided.



474 SINGLE STEM (1S)

5'-6" @ 24" Ø DRUM
474 TRIPLE STEM SUSPENDED DOUBLE DRUM (TSS2D)5'-6" @ 24" Ø DRUM
474 TRIPLE STEM SUSPENDED TRIPLE DRUM (TSS3D)6'-0" @ 24" Ø DRUM
474 TRIPLE STEM SUSPENDED FOUR DRUM (TSS4D)