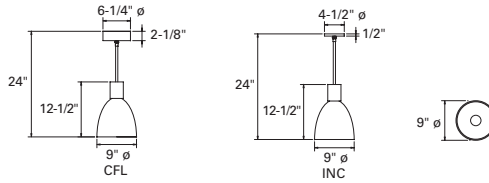


# SHAPER™



## 416 SERIES

416 Luminous Shade Pendant.



Sample Number: 416-CFL/1/26-347V-SAL-\_\_

Series	Lamp	Voltage	Finish	Options	Suspension Height
416=Luminous Shade	CFL/1/26 CFL/1/32 CFL/1/42 INC/1/100	120V 277V <sup>1</sup> 347V <sup>1</sup>	NA (standard), CC, MW, PCP, SAL, SCP	1S CSJ PSS2SD PSS3SD PSS4SD DL DM <sup>2</sup> REM <sup>3</sup> SCA <sup>4</sup>	24" Or Specify

**Notes:**  
1 Available with CFL only.  
2 Consult the factory for available options.  
3 Supplied by others.  
4 For Stem mounting only. Specify up to 45°.

### MATERIAL

Solid aluminum or solid copper materials. Matte white acrylic diffuser. Supplied with an SJ cord assembly. Single stem is standard suspension. Minimum 18" (OA).

### BALLAST

Integral electronic HPF, multi-volt 120/277V (347V Canada), thermally protected with end-of-life circuitry to accommodate the specified lamp wattage.

### INSTALLATION

Supplied with either a circle strap mounting canopy or bar strap that mounts to a 4" J-box or plaster ring. Integral safety cable provided with option stem.

### LAMP/SOCKET

One (1) 26W, 32W (GX24q-3) or 42W (GX24q-4) 4-pin triple CFL lamps or one (1) 100W A-19 lamps. CFL socket injection molded plastic. INC socket fired ceramic rated for 660W-250V. Lamps furnished by others.

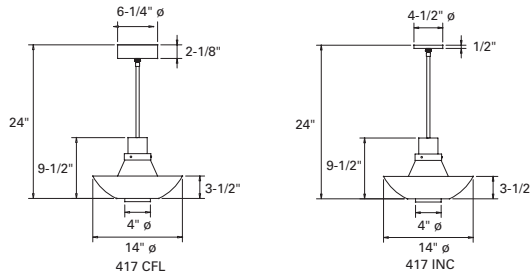
### FINISH AND OPTIONS

See page 1020 for finish details and options.



## 417 SERIES

417 Direct/Indirect Luminous Bowl Pendant.



Sample Number: 417-HAL/1/50-120V-SAL-\_\_

Series	Lamp	Voltage	Finish	Options	Suspension Height
417=Direct/Indirect Luminous Bowl	CFL/1/26 CFL/1/32 CFL/1/42 INC/1/100 HAL/1/50	120V 277V <sup>1</sup> 347V <sup>1</sup>	NA (standard), CC, MW, PCP, SAL, SCP	1S CSJ SSS2SD SSS3SD SSS4SD DL DM <sup>2</sup> REM <sup>3</sup> SCA <sup>4</sup>	24" Or Specify

**Notes:**  
1 Available with CFL only.  
2 Consult the factory for available options.  
3 Supplied by others.  
4 For Stem mounting only. Specify up to 45°.

### MATERIAL

Solid aluminum materials. Matte white acrylic, one piece. Single stem is standard suspension. Minimum 18" (OA).

### BALLAST

Integral electronic HPF, multi-volt 120/277V (347V Canada), thermally protected with end-of-life circuitry to accommodate the specified lamp wattage.

### INSTALLATION

Supplied with either a circle strap mounting canopy or bar strap that mounts to a 4" J-box or plaster ring. Integral safety cable provided.

### LAMP/SOCKET

One (1) 26W, 32W (GX24q-3) or 42W (GX24q-4) 4-pin triple CFL lamp or one (1) 100W A-19 or 50PAR20H lamp. CFL socket injection molded plastic. INC socket fired ceramic rated for 660W-250V. Lamps furnished by others.

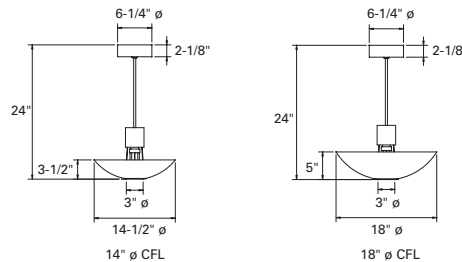
### FINISH AND OPTIONS

See page 1020 for finish details and options.



## 418 SERIES

418 Direct/Indirect Luminous Bowl Pendant.



Sample Number: 418-18-CFL/1/26-347V-SAL-\_\_

Series	Size	Lamp	Voltage	Finish	Options	Suspension Height
418=Direct/Indirect Luminous Bowl	14" 18"	CFL/1/26 CFL/1/32 INC/1/100	120V 277V <sup>1</sup> 347V <sup>1</sup>	NA (standard), CC, MW, PCP, SAL, SCP	1S CSJ SSS2SD SSS3SD SSS4SD DL DM <sup>2</sup> REM <sup>3</sup> SCA <sup>4</sup> CD	24" Or Specify

**Notes:**  
1. Available with CFL only. Notes:  
2. Consult the factory for available options.  
3. Supplied by others.  
4. For Stem mounting only. Specify up to 45°.

### MATERIAL

Solid aluminum materials. Matte white acrylic bowl and optional Cone Diffuser (CD). Single stem is standard suspension. Minimum 18" (OA).

### BALLAST

Integral electronic HPF, multi-volt 120/277V (347V Canada), thermally protected with end-of-life circuitry to accommodate the specified lamp wattage.

### INSTALLATION

Supplied with either a circle strap mounting canopy or bar strap that mounts to a 4" J-box or plaster ring. Integral safety cable provided.

### LAMP/SOCKET

One (1) 26W or 32W (GX24q-3) 4-pin triple CFL lamp or one (1) 100W A-19 lamp. CFL socket injection molded plastic. INC socket fired ceramic rated for 660W-250V. Lamps furnished by others.

### FINISH AND OPTIONS

See page 1020 for finish details and options.