

DESCRIPTION

271 "Craftsman" Luminous Square features direct/indirect illumination and is available in two sizes.

Catalog #	Type
Project	
Comments	Date
Prepared by	

SPECIFICATION FEATURES

Material

Painted and plated cold rolled steel, stainless steel or solid bronze with matte white acrylic panels.

Finish (Frame and Mounting Pan)

Standard: Matte White (MW) or Matte Black (MB).
Premium: Hand Oxidized Bronze (OBZ), Satin Stainless Steel (SSS), Satin Brass (SB), Satin Bronze (SBZ) or Custom Color (CC).

Optics

Refer to www.shaperlighting.com for complete photometrics.

Ballast

Integral electronic HPF, multi-volt 120/277V (347V Canada), thermally protected with end-of-life circuitry to accommodate the specified lamp wattage.

Lamp/Socket

14": Two (2) 13W (2GX7) 4-pin low wattage CFL lamps or two (2) 26W (GX24q-3) 4-pin quad CFL lamps or two (2) 60W A-19

lamps.

18": Two (2) 26W (GX24q-3) 4-pin quad CFL lamps or two (2) 75W A-19 lamps. CFL socket injection molded plastic. INC socket fired ceramic rated for 660W-250V. Lamps furnished by others.

Installation

Supplied with a universal circular strap for a standard 4" J-box or plaster ring.

Options

Hand Painted Faux Alabaster Panels (FP), Hand Painted Faux Linen Panels (LNP), CFL Dimming Ballast - Contact the factory for ballast options (DM), Mica Side Panels (MSP), 4 Panel (4P), 5 Panel with Double Trim Bars (5P2TB), Opal Glass (OG), Modified Integral Emergency Battery (MEM), Damp Location (DL): All Painted Finishes only. Energy Star Rating - Consult Factory.

Labels

U.L. and C.U.L. approved for indoor and damp location. See options for damp location finishing requirements.

Modifications

Shaper's skilled craftspeople with their depth of experience offer the designer the flexibility to modify standard surface luminaires for project specific solutions. Contact the factory regarding scale options, unique finishes, mounting, additional materials/colors, or decorative detailing.



271 SERIES

Surface Luminaire
"Craftsman"
Luminous Square



ORDERING INFORMATION

Sample Number: 271-18-INC/2/75-120V-SBZ

Series	Size	Lamp	Voltage	Finish	Options
271=Craftmen Square Surface	14" 18"	CFL/2/13 ¹ CFL/2/26 INC/2/60 ¹ INC/2/75 ²	120V 277V ³ 347V ³	<u>Standard</u> MB=Matte Black MW=Matte White <u>Premium</u> CC=Custom Color OBZ=Hand Oxidized Bronze SB=Satin Brass SBZ=Satin Bronze SSS=Satin Stainless Steel	4P=Four Panel 5P2TB=5 Panel w/ Double Trim Bars DL=Damp Location ⁵ DM=CFL Dimming Ballast ⁴ MEM=Modified Integral Emergency Battery OG=Opal Glass FP=Hand Painted Faux Alabaster Panels MSP=Mica Side Panels LNP=Hand Painted Faux Linen Panels

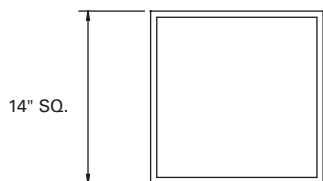
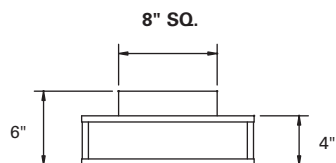
Notes:

- Available in 14".
- Available in 18".
- Available with CFL only.
- Consult the factory for available options.
- Interior use only.

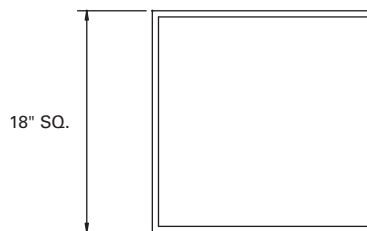
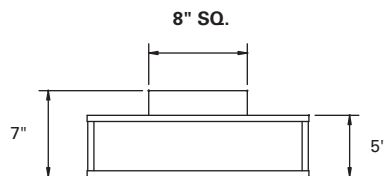


Shaper now offers a wide variety of fixtures that can be provided with an Energy Star Rating.

Refer to the Icon Legend
Link on shaperlighting.com.

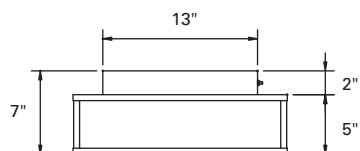


271 - 14" SQ. STANDARD

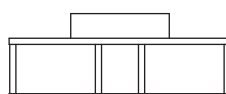


271 - 18" SQ. STANDARD

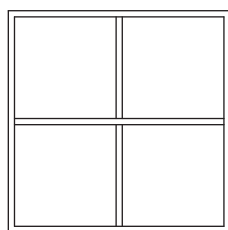
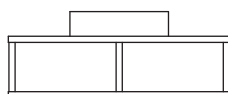
271 TRIM OPTIONS



MODIFIED INTEGRAL
EMERGENCY BATTERY (MEM)



5 PANEL WITH DOUBLE
TRIM BARS (5P2TB)



4 PANEL (4P)

COMPANION PRODUCTS



240



440



472



607



640



672-WP