

## DESCRIPTION

210 Luminous Bowl features trim options and is available in two sizes.

Catalog #		Type
Project		
Comments		Date
Prepared by		

## SPECIFICATION FEATURES

### Material

Cold rolled steel mounting pan with a matte white acrylic bowl. Optional Caming Trim.

### Finish

Standard: Matte White (MW). Premium: Satin Chrome (SC), Polished Chrome (PC), Satin Brass (SB), Satin Copper (SCP), Polished Brass (PB), Polished Copper (PCP), Oxidized Brass (OBRS), Lacquered Satin Chrome (SCL), Satin Nickel (SN), Polished Nickel (PN), Lacquered Satin Nickel (SNL), Lacquered Satin Aluminum (SAL), Natural Aluminum (NA) [Sustainable Design] or Custom Color (CC). Matte white mounting pan.

### Optics

Refer to [www.shaperlighting.com](http://www.shaperlighting.com) for complete photometrics.

### Ballast

Integral electronic HPF, multi-volt 120/277V (347V Canada), thermally protected with end-of-

life circuitry to accommodate the specified lamp wattage.

### Lamp/Socket

14": Two (2) 13W (2GX7) 4-pin low wattage CFL lamps or two (2) 60W A-19 lamps.  
18": Two (2) 26W or 32W (GX24q-3) 4-pin triple CFL lamps or two (2) 75W A-19 lamps. CFL socket injection molded plastic. INC socket fired ceramic rated for 660W-250V. Lamps furnished by others.

### Installation

Supplied with a universal circular strap for a standard 4" J-box or plaster ring.

### Options

Hand Painted Faux Alabaster Bowl (FB), Caming Trim (CT), 3" Dia. Stepped Finial with Caming Trim (SFCT), Traditional Finial (TF), 3" Dia. Stepped Finial with Trim Ring (SFTR), Trim Ring (TR), Decorative Finial with Double Bar Trim (DF2B), CFL Dimming Ballast - Contact the factory for

ballast options (DM), Modified Integral Emergency Battery - Refer to spec sheet for drawing (MEM), Damp Location (DL): All Painted Finishes, Lacquered Satin Chrome (SCL) and Lacquered Satin Nickel (SNL) only. MRI applications (INC only). Energy Star Rating - consult factory.

### Labels

U.L. and C.U.L. approved for indoor and damp location. See options for damp location finishing requirements.

### Modifications

Shaper's skilled craftspeople with their depth of experience offer the designer the flexibility to modify standard surface luminaires for project specific solutions. Contact the factory regarding scale options, unique finishes, mounting, additional materials/colors, or decorative detailing.



## 210 SERIES

Surface Luminaire  
Luminous Bowl



## ORDERING INFORMATION

Sample Number: 210-18-INC/2/75-120V-PCP

Series	Size	Lamp	Voltage	Finish	Options
210=Bowl Surface Luminaire	14" 18"	CFL/2 <sup>1</sup> (26/32W-Triple) CFL/2/13 <sup>2</sup> INC/2/60 <sup>2</sup> INC/2/75 <sup>1</sup>	120V 277V <sup>3</sup> 347V <sup>3</sup>	<u>Standard</u> MW=Matte White <u>Premium</u> CC=Custom Color OBRS=Oxidized Brass PB=Polished Brass PC=Polished Chrome PCP=Polished Copper PN=Polished Nickel SAL=Lacquered Satin Aluminum NA=Natural Aluminum SB=Satin Brass SC=Satin Chrome SCP=Satin Copper SN=Satin Nickel SCL=Lacquered Satin Chrome SNL=Lacquered Satin Nickel	CT=Caming Trim DL=Damp Location <sup>5</sup> DM=CFL Dimming Ballast <sup>4</sup> MEM=Modified Integral Emergency Battery DF2B=Decorative Finial w/ Double Bar Trim SFCT=3" Diameter Stepped Finial w/ Caming Trim SFTR=3" Diameter Stepped Finial w/ Trim Ring TF=Traditional Finial FB=Hand Painted Faux Alabaster Bowl TR=Trim Ring LNB=Hand Painted Faux Linen Bowl

### Notes:

- Available in 18".
- Available in 14".
- Available with CFL only.
- Consult the factory for available options.
- Interior applications only.

### SUSTAINABLE DESIGN

Shaper has a long-standing history of offering environmentally-friendly fixtures. The copper and bronze alloys used in our exterior luminaires feature up to 98% recycled content, contribute less undesirable air emissions compared to painted aluminum and are easy to recycle.

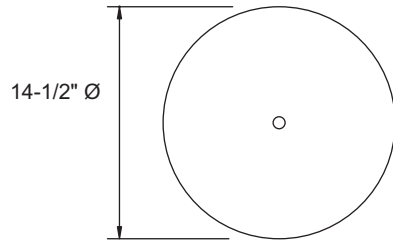
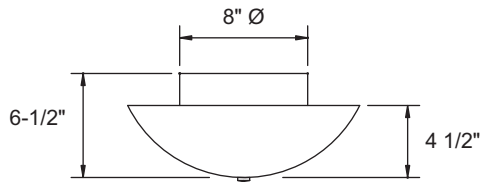
### MAGNETIC RESONANCE IMAGING (MRI)

Lighting fixtures for MRI facilities are specialized and unique, requiring non-ferrous construction. Fluorescent fixtures cannot be used due to the ferrous parts in ballasts and lampholders. Modified incandescent fixtures meet the requirements.

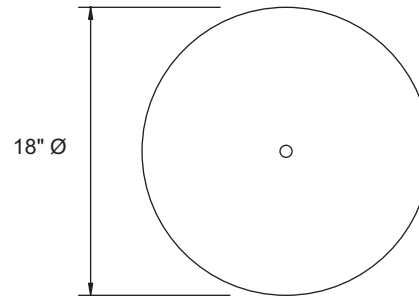
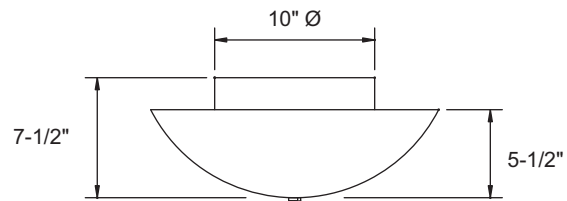
### ENERGY STAR

Shaper now offers a wide variety of fixtures that can be provided with an Energy Star Rating.

Refer to the Icon Legend  
Link on [shaperlighting.com](http://shaperlighting.com).

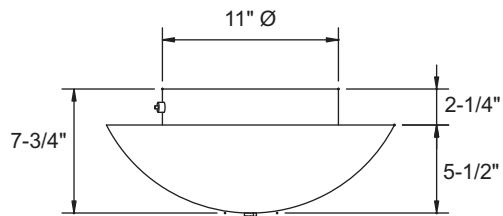


210 14" Ø STANDARD

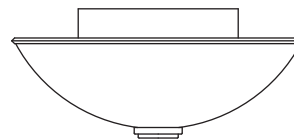


210 18" Ø STANDARD

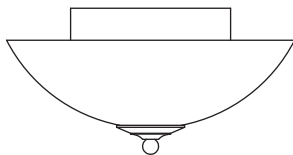
210 TRIM OPTIONS



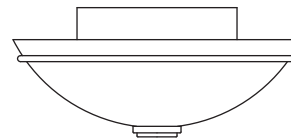
MODIFIED INTEGRAL EMERGENCY BATTERY (MEM)



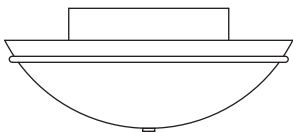
3" DIA. STEPPED FINIAL WITH CAMING TRIM (SFCT)



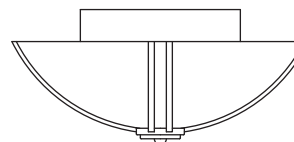
TRADITIONAL FINIAL (TF)



3" DIA. STEPPED FINIAL WITH TRIM RING (SFTR)



FINIAL NUT WITH TRIM RING (TR)



DECORATIVE FINIAL WITH DOUBLE BAR TRIM (DF2B)

COMPANION PRODUCTS



404



499



499-RP



642-A