

DESCRIPTION

208 Luminous Bowl features direct downlight component and a luminous bowl with an optional luminous cone.

Catalog #		Type
Project		
Comments		Date
Prepared by		

SPECIFICATION FEATURES

Material

Solid aluminum with a matte white acrylic bowl. Optional matte acrylic cone.

Finish

Standard: Natural Aluminum (NA) [Sustainable Design]. Premium: Matte White (MW), Lacquered Satin Aluminum (SAL), Satin Copper (SCP) or Custom Color (CC).

Optics

Refer to www.shaperlighting.com for complete photometrics.

Ballast

Integral electronic HPF, multi-volt 120/277V (347V Canada), thermally protected with end-of-life circuitry to accommodate the specified lamp wattage.

Lamp/Socket

One (1) 26W or 32W (GX24q-3) 4-pin triple CFL lamp or one (1) 100W A-19 lamp. CFL socket injection molded plastic. INC socket fired ceramic rated for 660W-250V. Lamps furnished by others.

Installation

Supplied with a universal circular strap for a standard 4" J-box or plaster ring.

Options

Cone Diffuser (CD), Remote Emergency Battery - Supplied by others (REM), Damp Location (DL): All Painted Finishes only, CFL Dimming Ballast - Contact the factory for ballast options (DM), MRI applications (INC only) - Contact factory. Energy Star Rating - consult factory.

Labels

U.L. and C.U.L. approved for indoor and damp location. See options for damp location finishing requirements.

Modifications

Shaper's skilled craftspeople with their depth of experience offer the designer the flexibility to modify standard surface luminaires for project specific solutions. Contact the factory regarding scale options, unique finishes, mounting, additional materials/colors, or decorative detailing.



208 SERIES

Surface Luminaire
Starter Collection
Luminous Bowl



ORDERING INFORMATION

Sample Number: 208-INC/1/100-120V-SCP

Series	Lamp	Voltage	Finish	Options
208=Bowl Surface Luminaire	CFL/1 (26/32W-Triple)	120V 277V ¹ 347V ¹	Standard NA=Natural Aluminum Premium CC=Custom Color MW=Matte White SAL=Lacquered Satin Aluminum SCP=Satin Copper	CONE=Cone Diffuser DL=Damp Location ⁴ DM=CFL Dimming Ballast ² REM=Remote Emergency Battery ³
Notes:	INC/1/100			

¹ Available with CFL only.
² Consult the factory for available options.
³ Supplied by others.
⁴ Interior applications only.

STARTER COLLECTION

Shaper's exclusive Starter Collection fixtures are featured throughout the Shaper product line. The concept of offering highly styled, affordable fixtures was introduced over fourteen years ago and has become one of our fastest growing lines. The design premise, basic construction, clean lines and unadorned shapes are highly desirable in modern architectural environments.

SUSTAINABLE DESIGN

Shaper has a long-standing history of offering environmentally-friendly fixtures. The copper and bronze alloys used in our exterior luminaires feature up to 98% recycled content, contribute less undesirable air emissions compared to painted aluminum and are easy to recycle.

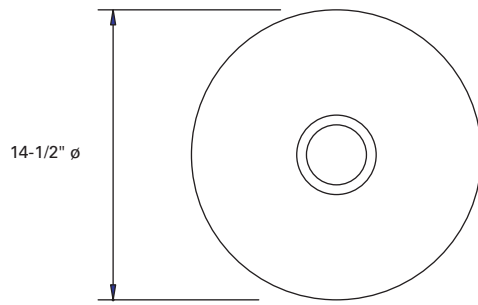
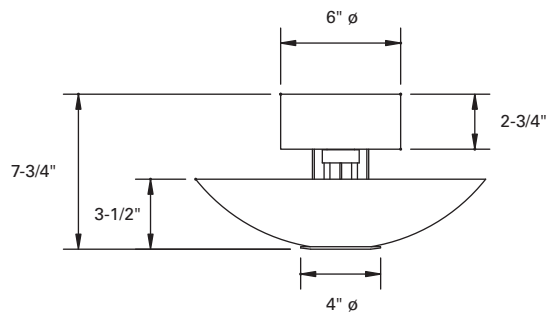
MAGNETIC RESONANCE IMAGING (MRI)

Lighting fixtures for MRI facilities are specialized and unique, requiring non-ferrous construction. Fluorescent fixtures cannot be used due to the ferrous parts in ballasts and lampholders. Modified incandescent fixtures meet the requirements.

ENERGY STAR

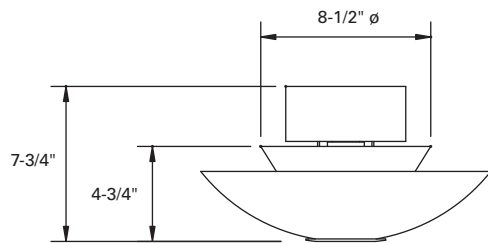
Shaper now offers a wide variety of fixtures that can be provided with an Energy Star Rating.

Refer to the Icon Legend
Link on shaperlighting.com.



208 STANDARD

208 OPTION



208 CONE DIFFUSER OPTION (CD)

COMPANION PRODUCTS



418



618



642-A