

DESCRIPTION

Remodel housing for Mini Quiet Ceiling small aperture square trimless fixtures. (QCM5101, QCM5102, QCM5103, QCM5104).

For non-I.C. remodel applications. Fixture is installed after the ceiling. Insulation must be kept 3" from all sides and at least 1" above the housing.

Catalog #	Type
Project	
Comments	Date
Prepared by	

SPECIFICATION FEATURES

A...Housing

Constructed of 18 gauge CRS with flat black powder coated internal finish. Adjustable trimless mesh plate and swing-out retaining brackets can accommodate up to 1-3/8" ceiling thickness.

B...System Protection:

Thermal protection provided to guard against overheating and misuse of insulation over and around fixture. Vent holes in housing provide cooler operation.

C...Electrical

Integral j-box and metal halide ballast. 120V input. Junction box is U.L. listed for through branch wiring. Includes four 1/2 trade size knockouts.

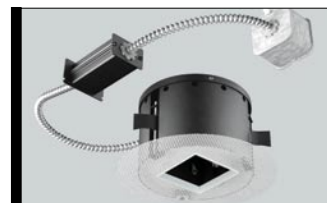
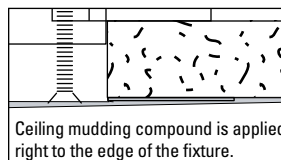
D...Lamp

CMH MR16 20W or ES16 BriteSpot 39W (not included). GX10 twist-lock lamp socket.

E...Mounting

Housing is secured with three adjustable swing-out retaining brackets. Adjustment is made from countersunk phillips screws in the mesh plate. Perforated mesh plate may be secured to drywall and/or joists (by others) for additional support.

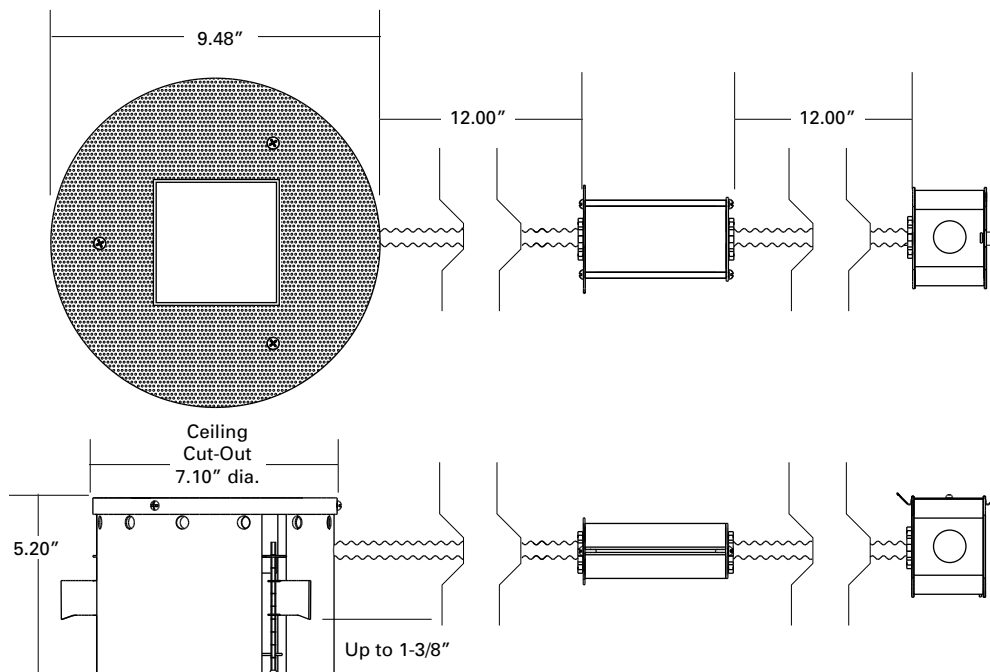
Ceiling Cut-Out: 7.10" dia.



MINI QUIET CEILING TRIMLESS

QCM514RMMH Remodel Housing for Square Trim

FOR CMH MR16 20W
or ES16 BriteSpot 39W



ORDERING INFORMATION

QCM514RMMH		
-------------------	--	--

Housing
QCM514RMMH =
Mini Quiet Ceiling
Remodel Housing
for Square Trim
w/ Integral Ballast

Metal Halide Ballast
20 = CMH MR16 20W
39 = ES16 BriteSpot 39W

Voltage
120 = 120 volts primary
277 = 277 volts primary*

* Consult factory for 277V ballast availability.