

DESCRIPTION

New construction housing for Mini Quiet Ceiling small aperture round trimless fixtures (QCM5001, QCM5002, QCM5003, QCM5004).

For new construction applications. Insulation must be kept 3" from all sides and at least 1" above the housing.

| Catalog # | Type |
|-------------|------|
| Project | |
| Comments | Date |
| Prepared by | |

SPECIFICATION FEATURES

A...Housing

Housing and plaster frame: 18 gauge CRS with flat black powder coated internal finish. Adjustable trimless mud-ring can accommodate 1/2", 5/8", 3/4" & 1" ceiling thickness.

B...System Protection:

Thermal protection provided to guard against overheating and misuse of insulation over and around fixture. Vent holes in housing provide cooler operation.

C...Electrical

Integral j-box and low voltage (12V) transformer. 120V input, 12V output. Junction box is U.L. listed for through branch wiring. Includes five 1/2 trade size knockouts (six knockouts when magnetic xfmr. is specified)

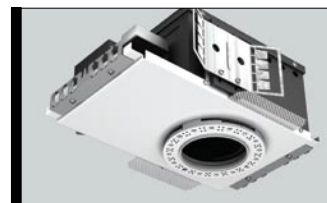
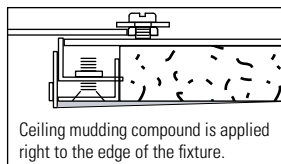
D...Lamp

12V MR16 50 watts max. (not included) Internal rotation ring with locking adjustment. Provides 360° rotation of trim and secures original trim position after relamping. "POSI-GRIP" bi-pin lamp socket for firm, mechanical lamp connection.

E...Mounting

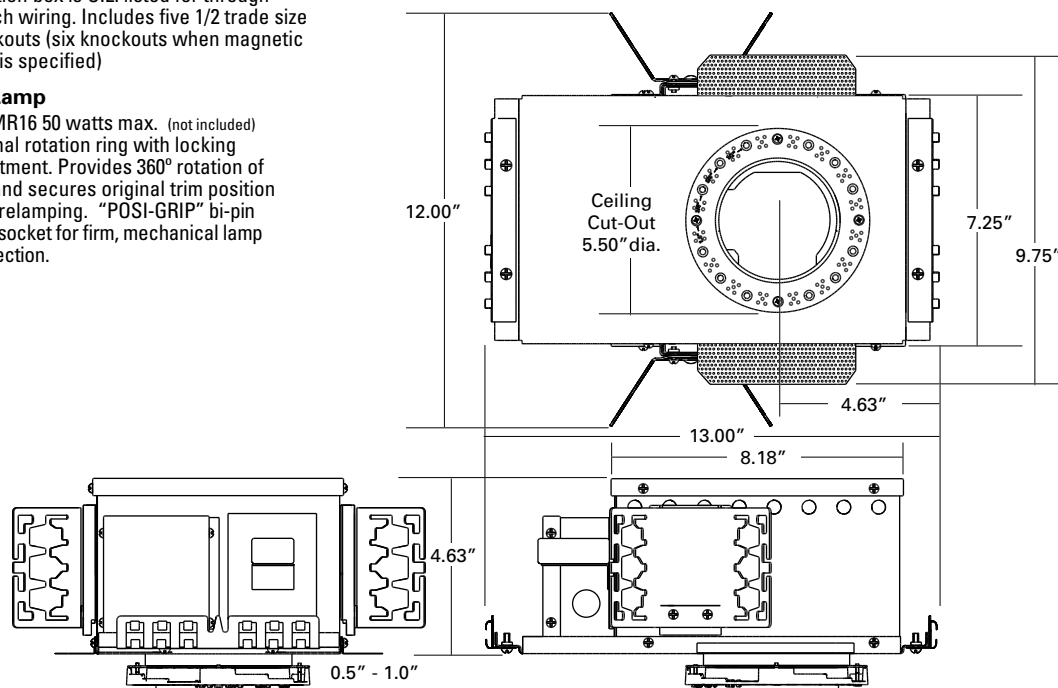
Hanger Bars and Butterfly Brackets included for residential and commercial applications respectively. Perforated flaps for secure drywall installation.

Ceiling Cut-Out: 5.50"



MINI QUIET CEILING TRIMLESS

QCM500
New Construction
Housing
for Round Trim
FOR 12V MR16 50 watts max.



ORDERING INFORMATION

| QCM500 | | |
|--|--|--|
| Housing QCM500 = Mini Quiet Ceiling New Construction Housing for Round Trim w/Integral Transformer | Transformer ELC = Electronic MAG = Magnetic | Voltage 120 = 120 volts primary 277 = 277 volts primary |