

FAIL-SAFE®**HUD****50 W - 150 W**

High Pressure Sodium

100 W - 175 W

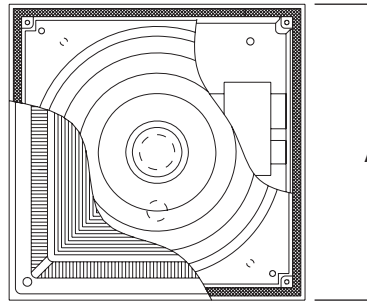
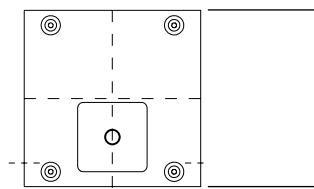
Metal Halide

POLYCARBONATE
HIGH ABUSE LUMINAIRE
CLEAR PRISMATICCAST ALUMINUM
SURFACE LUMINAIRE

- Nominal .156 UV stabilized, injection molded, impact resistant, prismatic polycarbonate refractor
- Captive, stainless steel tamper-resistant TORX®-head screws prevent unauthorized access
- Heavy duty, corrosion resistant cast aluminum housing withstands impact and environmental abuse. Standard bronze polyester powder coat finish
- Porcelain socket, copper screwshell, silicone braid, 150°C
- Non-shrinking, double baked neoprene gasketing seals out the environment
- HPF core and coil
- Spun .040 aluminum reflector provides symmetrical distribution. Baked white polyester powder coat finish
- U.L. listed, C.S.A. certified, standard wet label

DESCRIPTION

Fail-Safe designed the HUD Series with a vertical burn lamp and symmetrical distribution in wattages up to 175W MH as an unbreakable replacement answer to commercial fixtures which might succumb to vandalism. A corrosion resistant cast aluminum housing holds a polycarbonate diffuser which fastens with four tamper resistant screws to prevent unauthorized access. Double gasketing seals out the environment. U.L. listed, C.S.A. certified, standard wet label.

DIMENSIONS**MOUNTING**

A	B
12 3/4" sq. (324mm)	11 3/8" sq. (289mm)

ORDERING INFORMATION

SAMPLE NUMBER: HUD-100S-277-QRS

Product Family	Lamp Type	Voltage ¹	Options	Accessories (Order Separately)
HUD =Cast Aluminum Surface Luminaire	50S =50W HPS Medium Base 70S =70W HPS Medium Base 100S =100W HPS Medium Base 150S =150W HPS Medium Base 50M =50W MH Medium Base 70M =70W MH Medium Base 100M =100W MH Medium Base 150M =150W MH Medium Base 175M =175W MH Medium Base	120 =120V 208 =208V 240 =240V 277 =277V DT =Dual-Tap 120/277V MT =Multi-tap 120/208/240/277V	OPL =Opal Diffuser ² QRS =Quartz Restrike System (DC bayonet base; lamp by others) QS =Quartz Socket Only (DC bayonet base) SF =Single Fuse DF =Double Fuse LL =Lamp Included	VRSD =Torxhead Vandal Resistant Screwdriver 2802 =Pendant Mounting Box 2811 =Trunion Mounting Kit 2822 =Quick Mounting Kit PB-120 =Photocell 120V. PB-277 =Photocell 277V
	Fluorescent Source 213 =(2) 13W Twin Tube ³ 313 =(3) 13W Twin Tube ³ 226 =(2) 26W Quad Tube 326 =(3) 26W Quad Tube 132PLT =(1) 32W Triple Tube 232PLT =(2) 32W Triple Tube 142PLT =(1) 42W Triple Tube 242PLT =(2) 42W Triple Tube		Housing Finishes Blank =Bronze (Standard) BLK =Black WHT =White	

Notes: For additional options, consult your Cooper Lighting Representative. Specifications and Dimensions subject to change without notice.

¹Products also available in non-US voltages and 50Hz for international markets. Consult your Cooper Lighting Representative for availability and ordering information. ²150W Maximum. ³If 13W fixtures are ordered as electronic, lamps will be quad tube.