

DESCRIPTION

4" round recessed trimless adjustable pinhole fixture with hot aiming feature. For use with 12V MR16 lamp 71W max. or CMHMR16 20W or 39W.

For use in downlighting / accent applications.

Catalog #		Type
Project		
Comments		Date
Prepared by		

SPECIFICATION FEATURES

A...Trimless Fixture

Round adjustable pinhole trimless fixture. Includes bullet plunger retainers for smooth snap-in action during installation and removal of trim for relamping. Helps guard against plaster cracking.

B...Lamp

For use with 12V MR16 lamp 71W max. or CMH MR16 20W or 39W. Lamp not included. Lamp holder has 45° HOT AIMING adjustability. 12V MR16 fixture includes clear protective glass lens and can accept up to three (3) optical accessories total.

C...Socket

Posi-Grip bi-pin socket for 12V MR16. GX10 for metal halide lamps. (Included with Quiet Ceiling Housing sold separately)

D...Hot Aiming

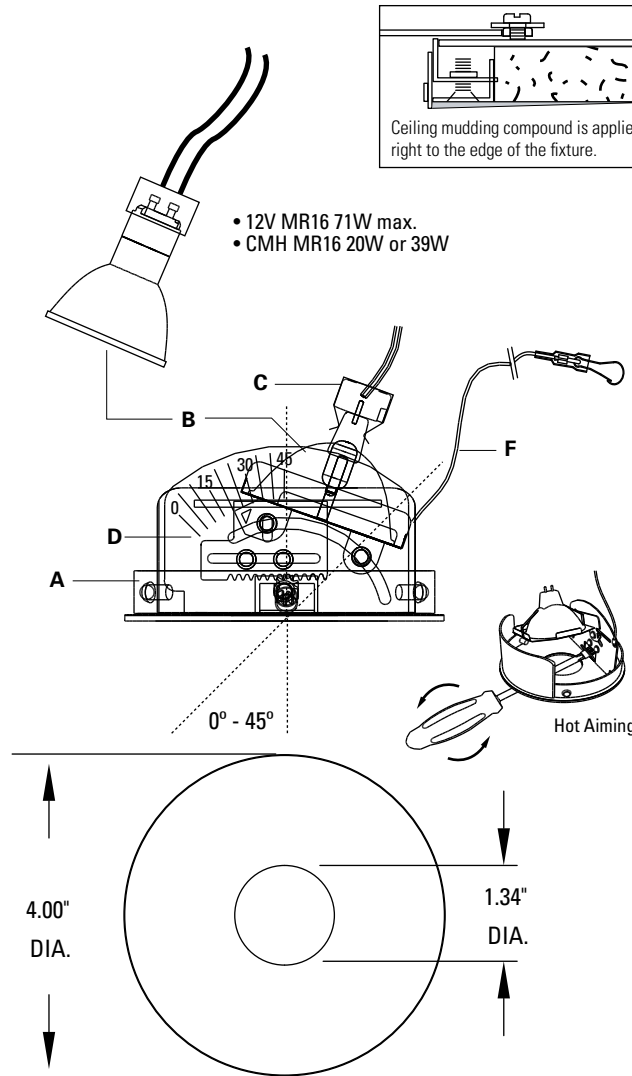
Lamp may be adjusted with the power on by using a philips screwdriver for up to 45° tilt. Self locking rack and pinion mechanism and visual angle indicators ensure precise adjustment.

E...Finish

Trim face is powder coated in white, black, industrial silver, stainless steel or primer finish for painting in existing ceiling color. All other internal components are flat black.

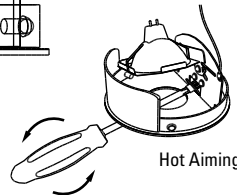
F...Safety

Steel safety cable provided. Attaches to tab inside housing to prevent falling during maintenance or as a result of accidental dislodging of the trim.



Ceiling mudding compound is applied right to the edge of the fixture.

- 12V MR16 71W max.
- CMH MR16 20W or 39W



QUIET CEILING TRIMLESS

QCT1775 4" Round Trimless Recessed Pinhole Fixture

FOR 12V MR16 71W max.
CMH MR16 20W or 39W

Compatible Housings:

QCT900 / QCT900MH

QCT902IC / QCT902ICMH

QCT904RM / QCT904RMMH

QCT906SP / QCT906SPMH



ORDERING INFORMATION

QCT1775	
Fixture QCT1775 = 4" Round Trimless Pinhole Fixture for 12V MR16 or CMH MR16	Finish WH = White BK = Black S = Industrial Silver SS = Stainless Steel (painted) PM = Primer