

T4 G8.5 Metal Halide

Closed Back Machined Fixture w/ Integral Ballast PM635cb | PM435cb | PM235cb | PM135cb

Catalog # _____

Type _____

Project _____

A machined aluminum track fixture that combines the use of a T4 G8.5 Metal Halide lamp with a high performance aluminum reflector. For use with RSA Profile Series 60 Amp Busway, 20 Amp 1 or 2 Circuit Track or 20 Amp 2 Circuit / 2 Neutral Track.

Reflectors available in 15°, 27° and 55° distributions.

Integral electronic metal halide ballast in aluminum housing. Ballast by Aromat®.

Front loading lamp with bayonet action lens / accessory bezel. Optical accessories are captured in the bezel with a threaded retainer ring preventing accessory spill-out during relamping. Can accommodate up to three optical accessories.

Auto extending / retracting lamp holder. Lamps extend for easy access and automatically retract to optimum position. This is extremely helpful when dealing with varying accessory combinations or differing manufacturer lamp dimensions.

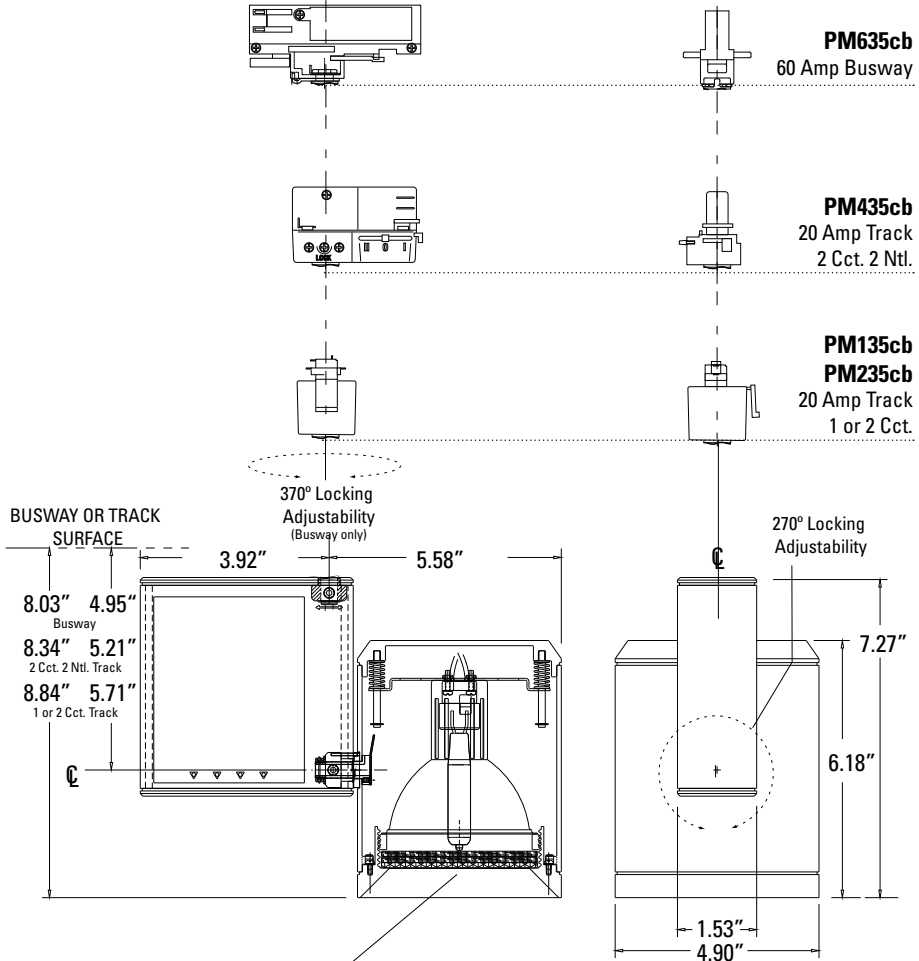
Optical accessories include color filters, UV filters, screens, spread lenses, louvers, hex louvers, snoots. Consult RSA for details.

Locking on both the horizontal and vertical planes. 370° vertical rotation possible due to over-center locking mechanism (60 amp busway only). 270° horizontal locking adjustment.

UL and CUL listed

Clear lens included.

Available in White, Black, Natural Aluminum or custom finishes.



PM635cb
60 Amp Busway

PM435cb
20 Amp Track
2 Cct. 2 Ntl.

PM135cb
PM235cb
20 Amp Track
1 or 2 Cct.

H - Overall Height	20/39W Lamp	70W Lamp
Busway	8.02"	9.20"
2cct. 2ntl. Track	8.33"	9.51"
1 or 2 cct Track	8.83"	10.01"

Closed Back Machined Fixture w/ Integral Ballast	Lamp Wattage	Distribution	Finish	Voltage
<input type="checkbox"/> PM635cb - T4 G8.5MH for 60 Amp Busway	<input type="checkbox"/> 20 20 Watt T4 G8.5MH	<input type="checkbox"/> 15 15° Narrow	<input type="checkbox"/> WH White	<input type="checkbox"/> 120
<input type="checkbox"/> PM135cb - T4 G8.5MH for 20 Amp 1 Circuit Track	<input type="checkbox"/> 39 39 Watt T4 G8.5MH	<input type="checkbox"/> 27 27° Medium	<input type="checkbox"/> BK Black	<input type="checkbox"/> 277
<input type="checkbox"/> PM235cb - T4 G8.5MH for 20 Amp 2 Circuit Track	<input type="checkbox"/> 70 70 Watt T4 G8.5MH	<input type="checkbox"/> 55 55° Wide	<input type="checkbox"/> AL Natural Alum.	
<input type="checkbox"/> PM435cb - T4 G8.5MH for 20 Amp 2 Cct. / 2 Neut. Track			<input type="checkbox"/> PT Custom Finish	

Ordering Example: **PM635cb-70-15-AL-120**

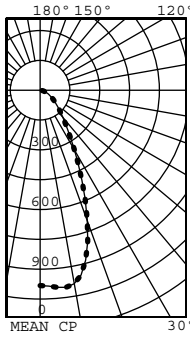


Lamp Performance Data

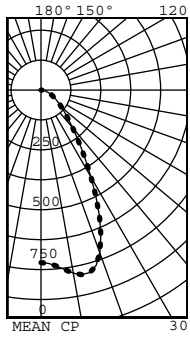
Lamp data given is typical and is based on bare lamp performance.
Contact lamp manufacturers for availability and specific performance.
Distance, length and width given in decimal feet.

Nominal Lamp Watts	Bulb	Base	MOL Nominal (inch)	Lamp Designation	ANSI Ballast	Average Rated Type	Color Temp. Life	Approx Lumens °K	Initial	Mean CRI
Single-Ended G8.5 Ceramic Metal Halide Lamps - Universal Burn / Enclosed Fixture Only										
20	T4.5	G8.5	3.37	CMH20/TC/U/830/G8.5	M156	6,000	3,000	1,700	1,200	>80
39	T4.5	G8.5	3.37	CMH39/TC/U/830/G8.5	M130	9,000	3,000	3,400	2,600	>80
70	T4.5	G8.5	3.37	CMH70/TC/U/830/G8.5	M139	9,000	3,000	6,200	4,700	>80

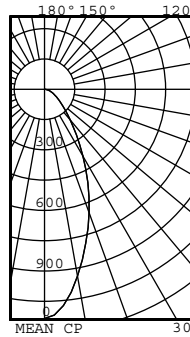
20W T4MH w/ 15° Reflector Frosted Glass Lens



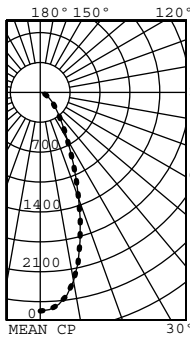
20W T4MH w/ 27° Reflector Frosted Glass Lens



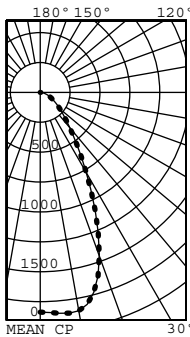
20W T4MH w/ 55° Reflector Frosted Glass Lens



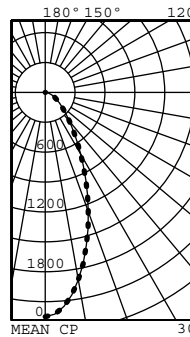
39W T4MH w/ 15° Reflector Frosted Glass Lens



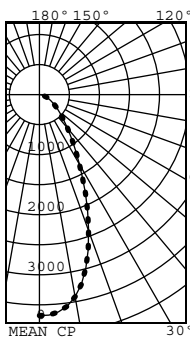
39W T4MH w/ 27° Reflector Frosted Glass Lens



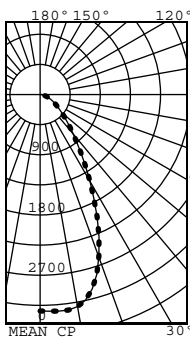
39W T4MH w/ 55° Reflector Frosted Glass Lens



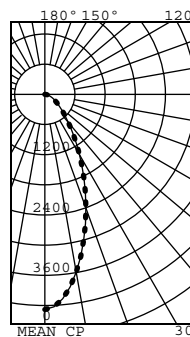
70W T4MH w/ 15° Reflector Frosted Glass Lens



70W T4MH w/ 27° Reflector Frosted Glass Lens



70W T4MH w/ 55° Reflector Frosted Glass Lens



Optivex UV Filter	Red Color Filter	Blue Color Filter	Amber Color Filter	Cosmetic Peach 2800K Filter	Milk White Lens	Diffusion Spread Lens	Linear Spread Lens
LN35	LN36	LN37	LN39	CP30	LN34	LN31	LN33
Prismatic Spread Lens	20% Reduction Screen	30% Reduction Screen	40% Reduction Screen	Hex Cell Louver	Cross Baffle	Snoot	
LN32	RS2030	RS3030	RS4030	LN30	CB30	SN30	