



T6 G12 Metal Halide

Closed Back Machined Fixture w/ Integral Ballast PM638cb | PM438cb | PM238cb | PM138cb

Catalog # _____

Type _____

Project _____

A machined aluminum track fixture that combines the use of a T6 G12 Metal Halide lamp with a high performance aluminum reflector. For use with RSA Profile Series 60 Amp Busway, 20 Amp 1 or 2 Circuit Track or 20 Amp 2 Circuit / 2 Neutral Track.

Reflectors available in 15°, 27° and 55° distributions.

Integral electronic metal halide ballast in aluminum housing.

Front loading lamp with bayonet action lens / accessory bezel. Optical accessories are captured in the bezel with a threaded retainer ring preventing accessory spill-out during relamping. Can accommodate up to three optical accessories.

Auto extending / retracting lamp holder. Lamps extend for easy access and automatically retract to optimum position. This is extremely helpful when dealing with varying accessory combinations or differing manufacturer lamp dimensions.

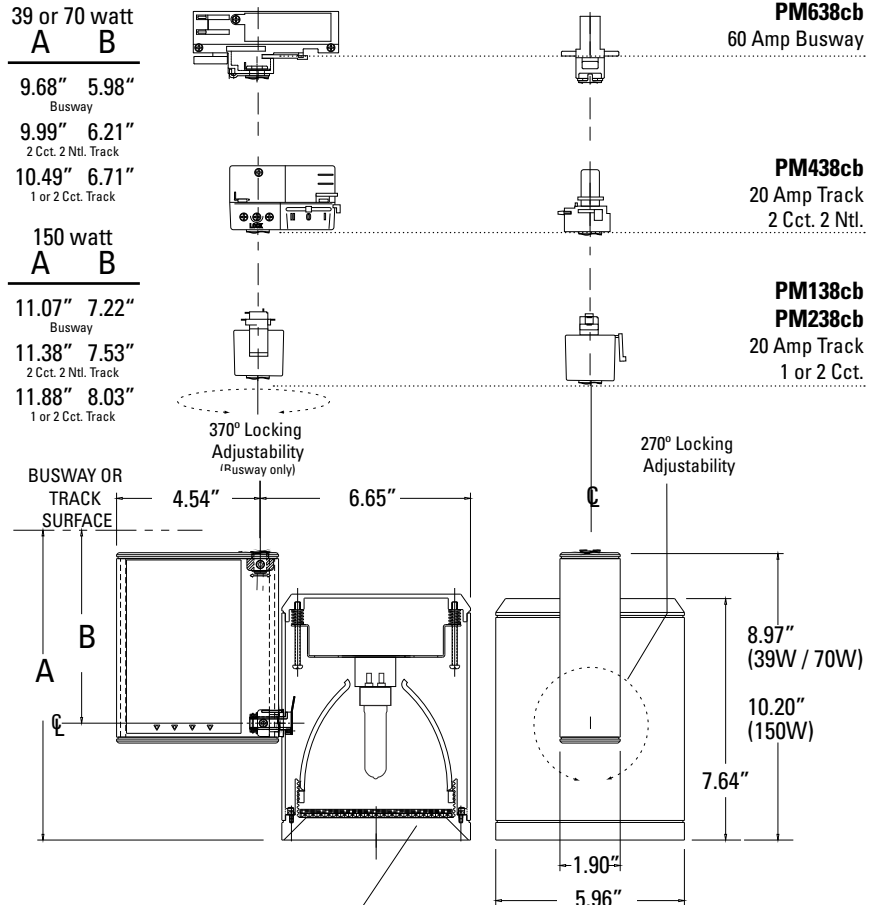
Optical accessories include color filters, UV filters, screens, spread lenses, louvers, hex louvers, snoots. Consult RSA for details.

Locking on both the horizontal and vertical planes. 370° vertical rotation possible due to over-center locking mechanism (60 amp busway only). 270° horizontal locking adjustment.

UL and CUL listed

Clear lens included.

Available in White, Black, Natural Aluminum or custom finishes.



| Closed Back Machined Fixture w/ Integral Ballast | Lamp Wattage | Distribution | Finish | Voltage |
|---|--|--|---|------------------------------|
| <input type="checkbox"/> PM638cb - T6 G12MH for 60 Amp Busway | <input type="checkbox"/> 39 39 Watt T6 G12MH | <input type="checkbox"/> 15 15° Narrow | <input type="checkbox"/> WH White | <input type="checkbox"/> 120 |
| <input type="checkbox"/> PM138cb - T6 G12MH for 20 Amp 1 Circuit Track | <input type="checkbox"/> 70 70 Watt T6 G12MH | <input type="checkbox"/> 27 27° Medium | <input type="checkbox"/> BK Black | <input type="checkbox"/> 277 |
| <input type="checkbox"/> PM238cb - T6 G12MH for 20 Amp 2 Circuit Track | <input type="checkbox"/> 150 150 Watt T6 G12MH | <input type="checkbox"/> 55 55° Wide | <input type="checkbox"/> AL Natural Alum. | |
| <input type="checkbox"/> PM438cb - T6 G12MH for 20 Amp 2 Cct. / 2 Neut. Track | | | <input type="checkbox"/> PT Custom Finish | |

Ordering Example: PM638cb-39-15-AL-120

