

DESCRIPTION

The Performance Downlight System (PDS) combines visually comfortable optics, energy efficiency and modularity with availability. Three key elements—reflector, socket adapter and frame—combine to form a feature-packed luminaire.

PDS reflectors boast equal 55° cutoff to lamp and lamp image. Low-iridescent clear reflector with white-painted self flange is standard.

PDS socket adapters provide modular flexibility and assure proper lamp orientation and lamp quantity to be used with each reflector. Lamp positions lock into place ensuring photometric performance. Electronic ballasts are standard.

PDS frames are dedicated to each aperture size and are used for compact fluorescent, metal halide and incandescent sources. No Fuss Bar Hangers™ speed installation of frames, minimizing labor costs on the job site.

SPECIFICATION FEATURES

A..Reflector

One-piece optical reflector minimizes internal losses and light leaks. 5/8" overlapping flange provides gap-free aperture. Standard finish is low-iridescent clear with white painted self-flange. Torsion spring mounting pulls flange tight to ceiling. Wall wash reflector utilizes injection-molded GRUVI, mechanically fastened to the reflector.

B..Baffles

One-piece black or white baffle. Upper specular reflector maximizes light output. Self-flange of each is painted white.

C..Socket Cap

One-piece metal cap. Positive connection between cap and reflector is provided by a twist-and-lock mechanism. Multiple slots allow for precise lamp positions.

D..Socket and Socket Adapter

4-pin G24q base with stainless steel spring for positive retention of 42, 32, and 26W triples. Guide post inserts rejects two-pin bases to ensure proper lamping. Multi-voltage ballast accommodates 120V thru 277V.

E..Frame

Galvanized steel frame with 1/2" plaster lip is standard. Accommodates ceilings up to 2" (50mm) thick.

F..No Fuss Bar Hanger

Bar hanger locks to T-bar with a screwdriver or pliers. Centering mechanism allows consistent centering of fixtures. 2 1/2" vertical adjustment. Can be used with 1/2" EMT

G..Junction Box

Galvanized with (6) 1/2" and (2) 3/4" KOs.

Insulation Detector

Thermal protection deactivates unit if improper lamp type or wattage is used, or if insulation is placed too close to the fixture.

Labels

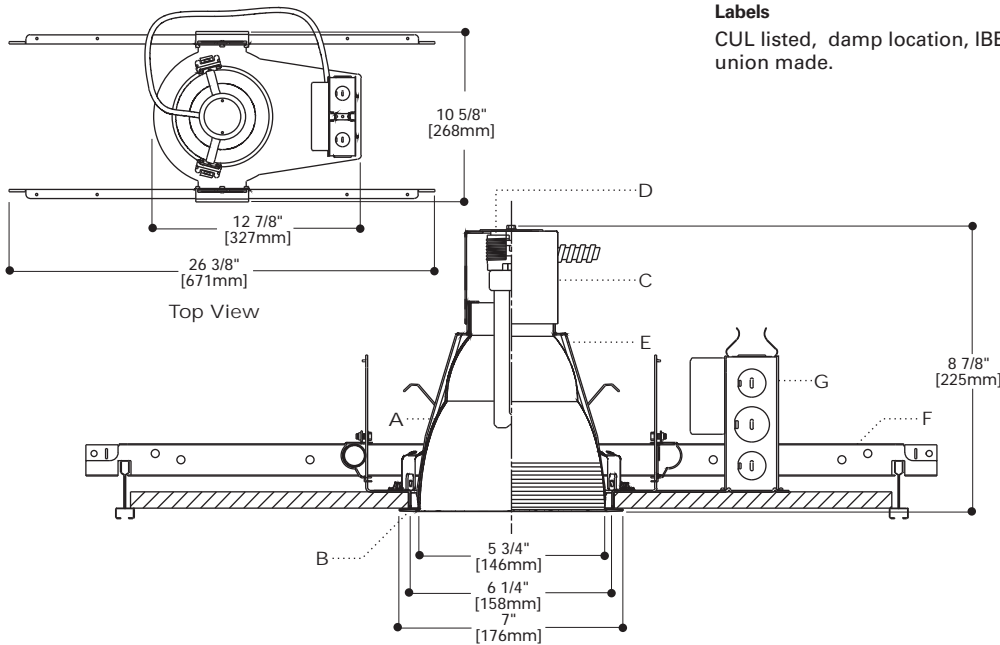
CUL listed, damp location, IBEW union made.



PD6-V142

4 2 W T T T
Compact Fluorescent

6" OPEN DOWNLIGHT
6" OPEN WALL WASH



ORDERING INFORMATION

SAMPLE NUMBER: PD6-V142E-6VC

Order frame, socket adapter and reflector separately for a complete unit.

Frame	Socket Adapter	Reflector
PD6	V 142 E	
PD6	V142E=(1) 42, 32 or 26W Triple tube lamp, multi voltage ballast.	6VC =6" Vertical Clear 6VWC =6" Vertical Open Wall Wash, Clear 6VBB =6" Vertical Black Baffle 6VWVB =6" Vertical White Baffle

Energy Data

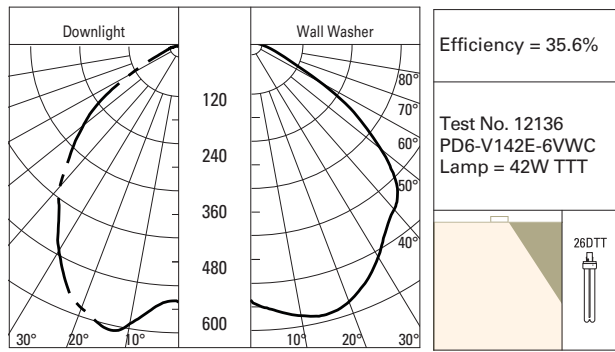
V142E

Input	Lamp Voltage	System wattage	Open wattage	Open circuit
120V, 42W	120V	47.0W	47.0W	0.39A
120V, 32W	120V	34.5W	34.5W	0.30A
120V, 26W	120V	26.0W	26.0W	0.22A
277V, 42W	277V	47.0W	47.0W	0.13A
277V, 32W	277V	34.5W	34.5W	0.13A
277V, 26W	277V	26.0W	26.0W	0.09A

Power Factor: >.98
 THD: <10%
 Sound Rating: A
 Min Starting Temp.: -0°C (20°F)

PHOTOMETRICS

Candlepower Distribution



Single Unit Foot-candles

2'6" Distance from wall (single fixture)						
DD	1'	2'	3'	4'	5'	6'
1	8	6	4	2	1	1
2	20	17	9	4	2	1
3	19	17	10	6	3	2
4	14	14	9	6	3	2
5	10	10	7	5	3	2
6	7	7	6	4	3	2
7	5	5	4	3	3	2
8	4	4	3	3	2	2
9	3	3	3	2	2	2
0	2	2	2	2	2	1

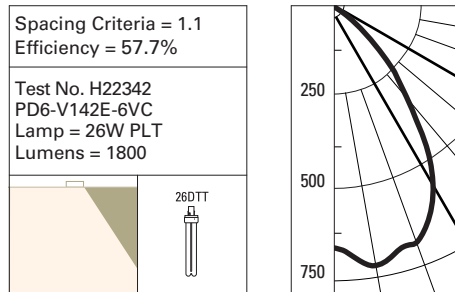
Candlepower

Downlight	Degree	Wall Washer
549	0	549
520	5	572
436	15	602
345	25	570
271	35	499
189	45	443
127	55	281
50	65	92
19	75	34
3	85	5
0	90	0

Avg Luminance CD/SQ M

Deg.	Downlight	Wall Washer
45	29019	39074
55	22182	30555
65	7379	13577
75	4338	8193
85	2862	3578

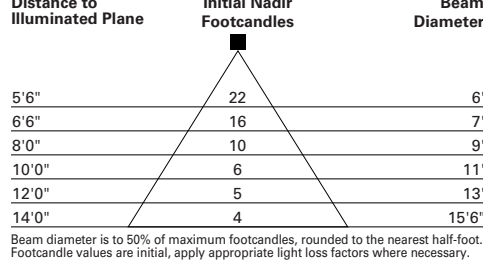
Candlepower Distribution



Candelas

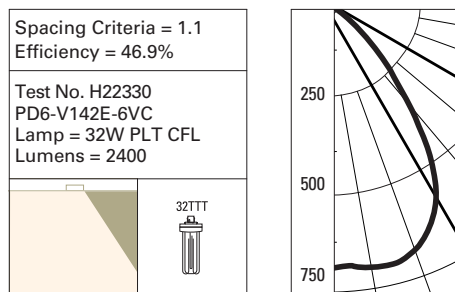
Vertical Angle	CD
90	0
85	0
75	1
65	2
55	18
45	232
35	440
25	637
15	701
5	685
0	663

Cone of Light



Candela

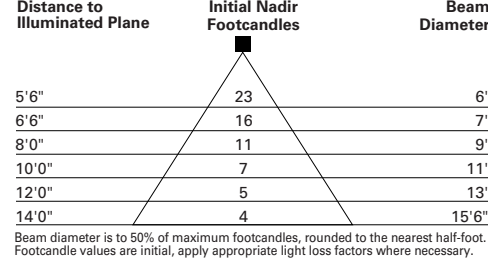
Candlepower Distribution



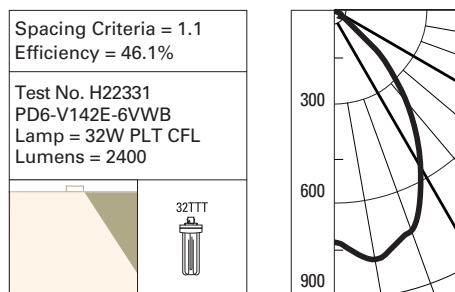
Candelas

Vertical Angle	CD
90	0
85	1
75	4
65	14
55	62
45	264
35	476
25	619
15	686
5	694
0	685

Cone of Light



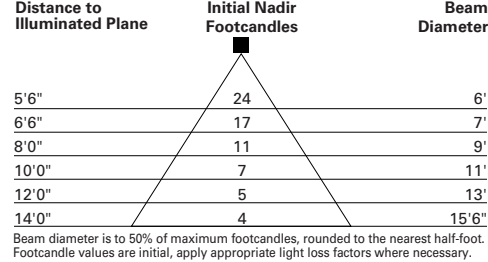
Candlepower Distribution



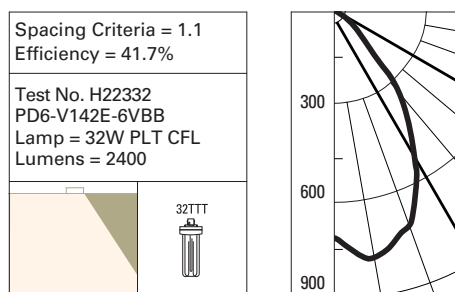
Candelas

Vertical Angle	CD
90	0
85	7
75	24
65	30
55	42
45	204
35	429
25	631
15	754
5	756
0	721

Cone of Light



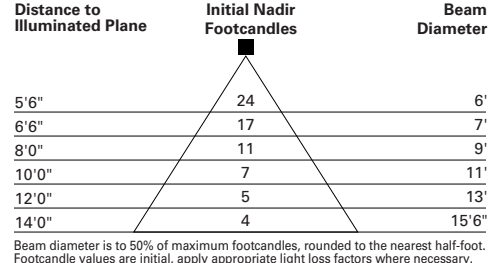
Candlepower Distribution



Candelas

Vertical Angle	CD
90	0
85	0
75	4
65	5
55	18
45	184
35	414
25	621
15	753
5	752
0	711

Cone of Light



Note: Specifications and Dimensions subject to change without notice.

Visit our website at www.cooperlighting.com